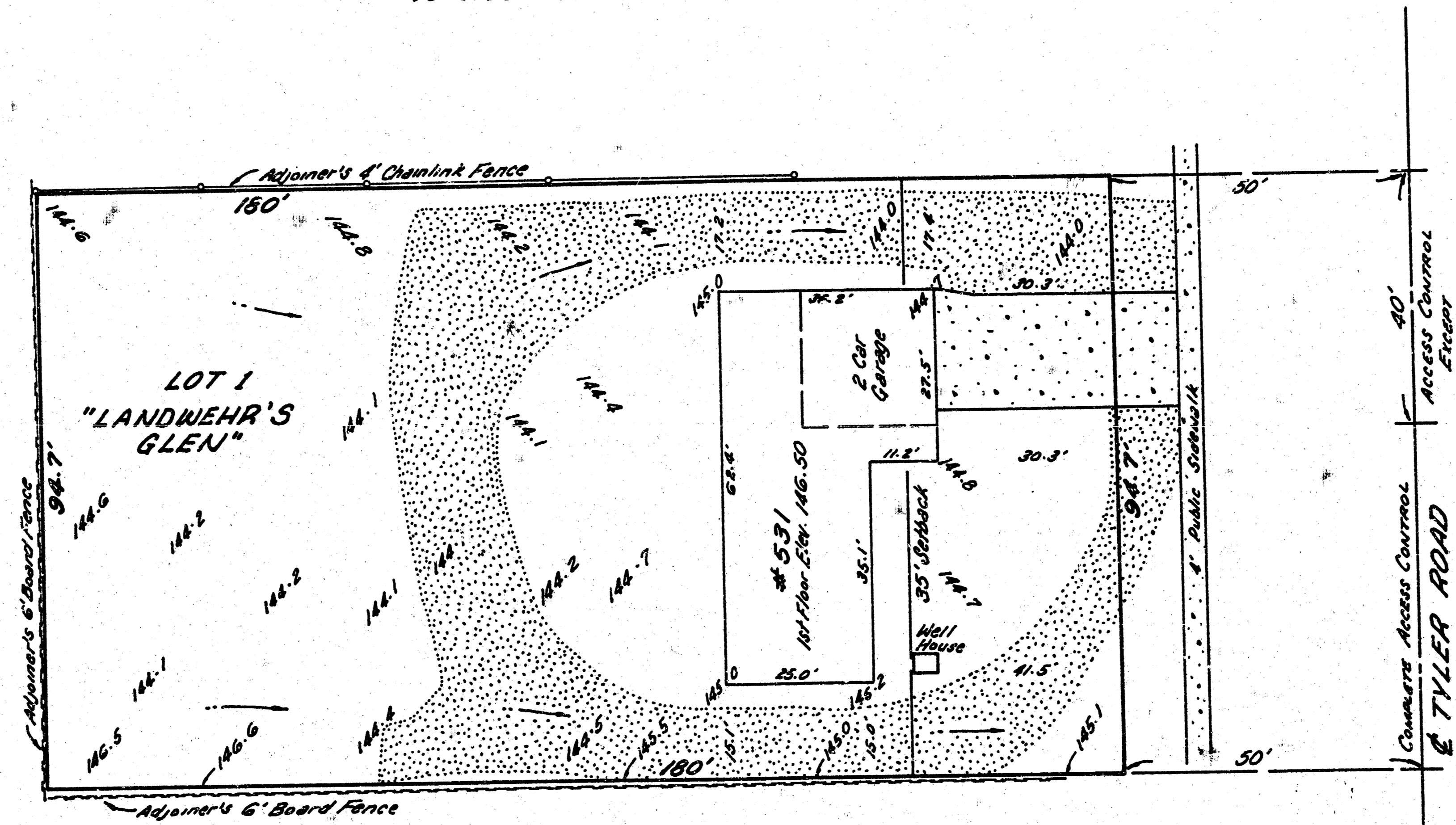


AMENDED DRAINAGE PLAN
 "LANDWEHR'S GLEN"
 TO WICHITA, SEDGWICK COUNTY, KANSAS



NOTE: Site reflects existing conditions.



Scale: 1" = 25'
 Date of Topography: 12 April, 1997
 File # 970150

Bench Mark:
 Chiseled square on NW corner
 drive at sidewalk intersection,
 531 N. Tyler.
 Elev. 143.95

Michel Sedwick
 4-22-97

