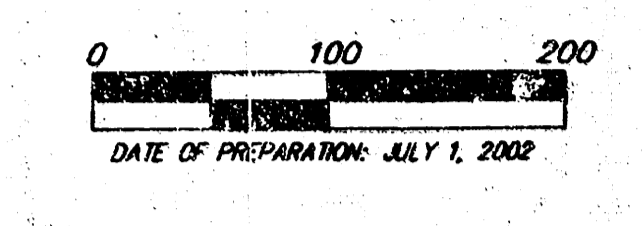
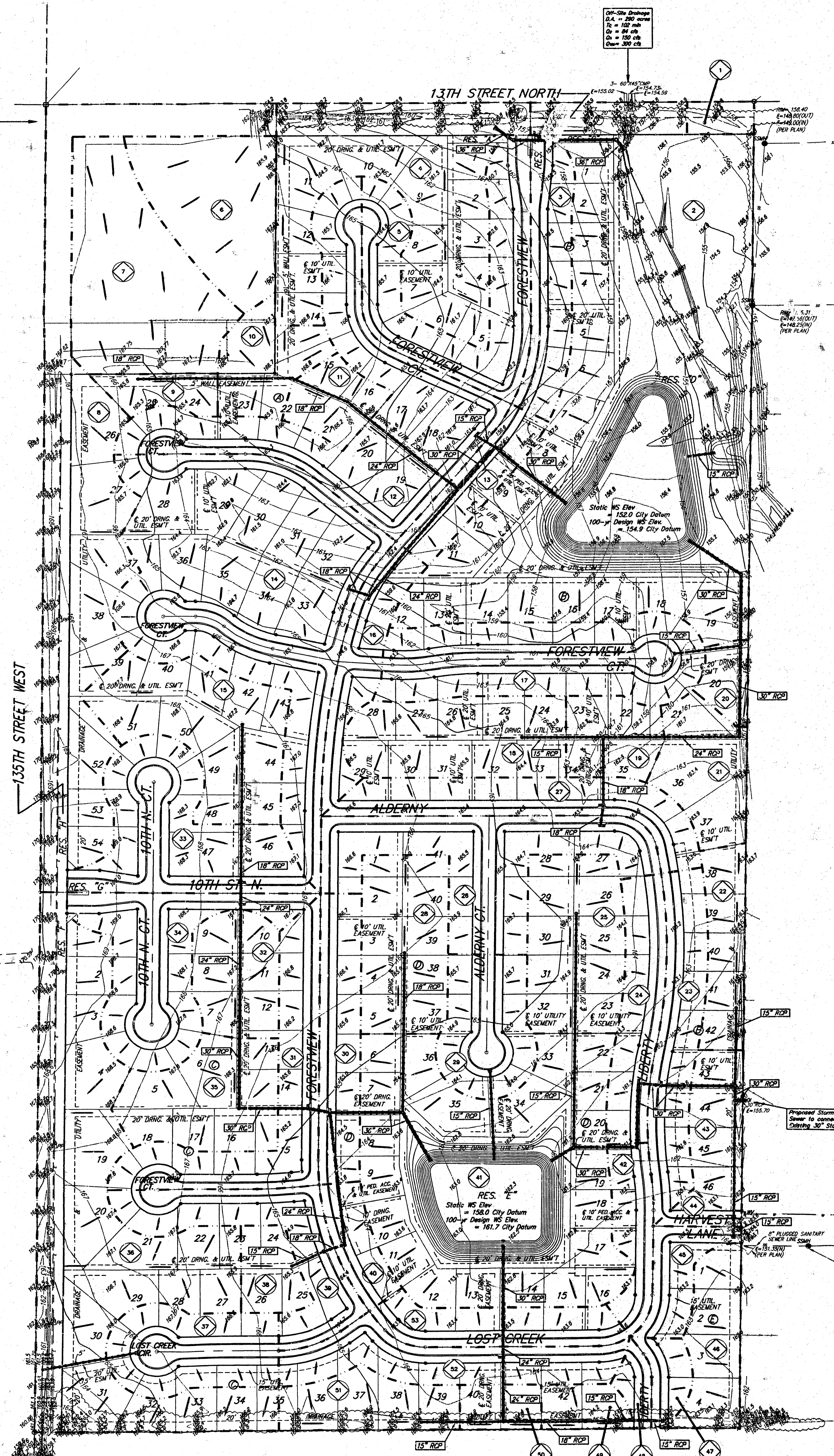


DRAINAGE PLAN LIBERTY PARK

AN ADDITION TO WICHITA, SEDGWICK COUNTY, KANSAS

Off-Site Drainage
D.A. = 20 acres
T₂ = 20 min
Q₂ = 10 cfs
Q₅ = 15 cfs
Q₁₀ = 20 cfs

Off-Site Drainage
D.A. = 200 acres
T₂ = 100 min
Q₂ = 50 cfs
Q₅ = 100 cfs
Q₁₀ = 150 cfs



LOT	BLOCK	ELEVATION CITY DATUM
1-19	B	163.5
7-20, 24, 35	D	156.5

BENCHMARK
County 604 nail in H.L.P. 800' west & 31' north of 10th St., cor. NW 1/4 Sec. 11, T. 22S., R. 31W. of the 6th P.M.
Elev. = 162.08 City Datum
1350.08 N.G.M.D. 29

Basin	Area ac	C2	C5	C100	Q2 cfs	Q5 cfs	Q100 cfs
1	0.2	0.46	0.46	0.67	0.4	0.5	1.0
2	8.7	0.54	0.56	0.72	2.0	2.6	5.1
3	1.0	0.46	0.49	0.67	1.8	2.3	4.5
4	3.1	0.46	0.46	0.67	5.5	7.9	15.3
5	1.8	0.46	0.49	0.67	3.2	4.5	8.9
6	1.8	0.46	0.49	0.67	3.2	4.5	8.9
7	2.2	0.46	0.49	0.67	3.9	5.6	11
8	4.2	0.46	0.49	0.67	7.4	11	21
9	0.4	0.46	0.49	0.67	0.7	1.0	2.0
10	0.8	0.46	0.49	0.67	1.4	2.0	4.0
11	0.5	0.46	0.49	0.67	0.9	1.3	2.5
12	3.0	0.46	0.49	0.67	5.3	7.7	15
13	0.8	0.46	0.49	0.67	1.1	1.5	3.0
14	4.8	0.46	0.49	0.67	8.5	12	24
15	1.8	0.46	0.49	0.67	3.2	4.5	8.9
16	0.8	0.46	0.49	0.67	1.4	2.0	4.0
17	2.1	0.46	0.49	0.67	3.7	5.4	10
18	1.4	0.46	0.49	0.67	2.5	3.6	6.9
19	0.6	0.46	0.49	0.67	1.1	1.5	3.0
20	0.3	0.46	0.49	0.67	0.5	0.8	1.5
21	3.9	0.46	0.49	0.67	7.1	10	20
22	0.7	0.46	0.49	0.67	1.2	1.8	3.5
23	1.2	0.46	0.49	0.67	2.1	3.1	5.9
24	0.9	0.46	0.49	0.67	1.6	2.3	4.4
25	1.4	0.46	0.49	0.67	2.5	3.6	6.9
26	2.0	0.46	0.49	0.67	3.5	5.1	9.9
27	1.3	0.46	0.49	0.67	2.3	3.3	6.4
28	1.3	0.46	0.49	0.67	2.3	3.3	6.4
29	1.0	0.46	0.49	0.67	1.8	2.6	4.9
30	1.0	0.46	0.49	0.67	1.8	2.6	4.9
31	1.5	0.46	0.49	0.67	2.6	3.8	7.4
32	0.8	0.46	0.49	0.67	1.4	2.0	4.0
33	1.8	0.46	0.49	0.67	3.2	4.5	8.9
34	1.6	0.46	0.49	0.67	2.8	4.1	7.9
35	1.3	0.46	0.49	0.67	2.3	3.3	6.4
36	4.8	0.46	0.49	0.67	8.5	12	24
37	1.1	0.46	0.49	0.67	1.9	2.8	5.4
38	0.4	0.46	0.49	0.67	0.7	1.0	2.0
39	1.2	0.46	0.49	0.67	2.1	3.1	5.9
40	0.4	0.46	0.49	0.67	0.7	1.0	2.0
41	5.2	0.57	0.60	0.74	11.4	16	28
42	0.8	0.46	0.49	0.67	1.1	1.5	3.0
43	0.7	0.46	0.49	0.67	1.2	1.8	3.5
44	0.2	0.46	0.49	0.67	0.4	0.5	1.0
45	0.5	0.46	0.49	0.67	0.9	1.3	2.5
46	0.8	0.46	0.49	0.67	1.4	2.0	4.0
47	0.3	0.46	0.49	0.67	0.5	0.8	1.5
48	0.2	0.46	0.49	0.67	0.4	0.5	1.0
49	0.3	0.46	0.49	0.67	0.5	0.8	1.5
50	0.3	0.46	0.49	0.67	0.5	0.8	1.5
51	0.8	0.46	0.49	0.67	1.4	2.0	4.0
52	1.2	0.46	0.49	0.67	2.1	3.1	5.9
53	0.8	0.46	0.49	0.67	1.4	2.0	4.0

