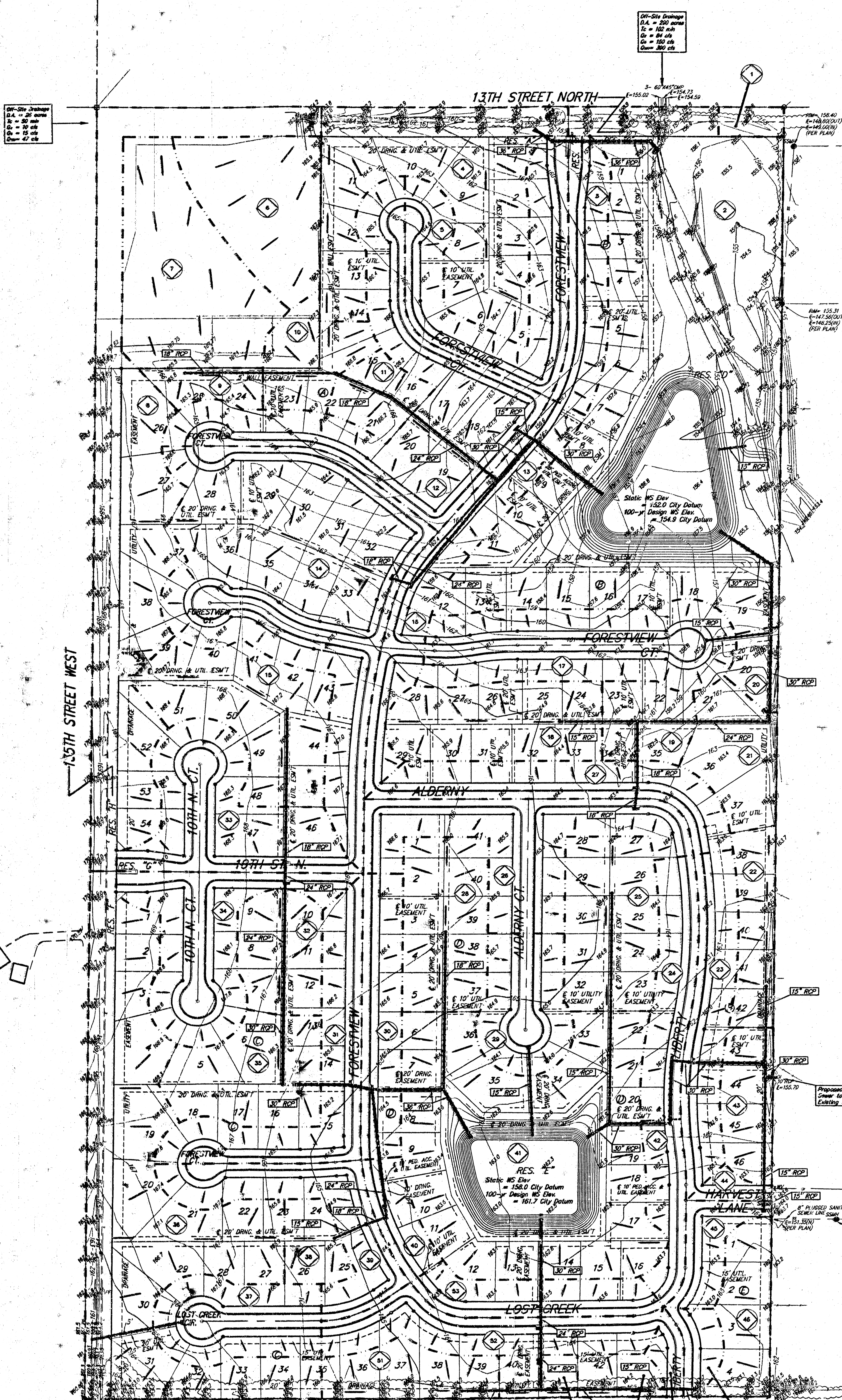


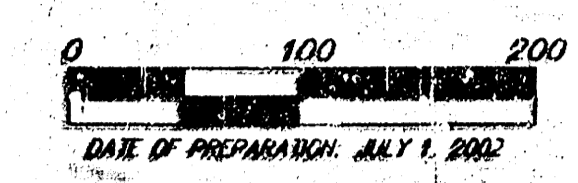
DRAINAGE PLAN LIBERTY PARK AN ADDITION TO WICHITA, SEDGWICK COUNTY, KANSAS



Drainage
14" = 20' man
12" = 15' man
10" = 10' man
8" = 7' man
6" = 4' man

Drainage
14" = 20' man
12" = 15' man
10" = 10' man
8" = 7' man
6" = 4' man

Drainage
14" = 20' man
12" = 15' man
10" = 10' man
8" = 7' man
6" = 4' man



MINIMUM BUILDING PAD ELEVATIONS FOR LATEST OPENING TO THE STRUCTURES

| LOT | BLOCK | ELEVATION CITY DATUM |
|--------------|-------|----------------------|
| 1-19 | B | 163.5 |
| 7-10, 34, 35 | D | 156.5 |

REMARKS:
County R-200 Plan & H.L.P. R-200 West & 11' north of the NE cor. NW 1/4 Sec. 13, Twp. 27-S, R-3-W of the 6th P.M.
Elev. = 162.00 City Datum
1550.00 N.G.V. 23

| Basin | Area | C2 | C5 | 7400 | C2 | C5 | C100 |
|-------|------|------|------|------|-----|------|------|
| ac | ac | cts | cts | cts | cts | cts | cts |
| 1 | 0.2 | 0.46 | 0.49 | 0.97 | 0.4 | 0.5 | 1.0 |
| 2 | 0.7 | 0.51 | 0.55 | 0.72 | 0.5 | 0.6 | 1.1 |
| 3 | 0.9 | 0.46 | 0.49 | 0.97 | 1.8 | 2.8 | 4.9 |
| 4 | 1.1 | 0.46 | 0.49 | 0.97 | 5.5 | 7.9 | 15.3 |
| 5 | 1.3 | 0.46 | 0.49 | 0.97 | 2.2 | 4.8 | 8.9 |
| 6 | 1.6 | 0.46 | 0.49 | 0.97 | 2.7 | 5.4 | 10.9 |
| 7 | 2.2 | 0.46 | 0.49 | 0.97 | 3.9 | 5.8 | 11 |
| 8 | 4.2 | 0.46 | 0.49 | 0.97 | 7.4 | 11 | 21 |
| 9 | 0.4 | 0.46 | 0.49 | 0.97 | 0.7 | 1.0 | 2.0 |
| 10 | 0.8 | 0.46 | 0.49 | 0.97 | 1.4 | 2.0 | 4.0 |
| 11 | 0.5 | 0.46 | 0.49 | 0.97 | 0.9 | 1.2 | 2.5 |
| 12 | 3.0 | 0.46 | 0.49 | 0.97 | 6.9 | 7.7 | 16 |
| 13 | 0.6 | 0.46 | 0.49 | 0.97 | 1.1 | 1.6 | 3.0 |
| 14 | 4.8 | 0.46 | 0.49 | 0.97 | 8.6 | 12 | 24 |
| 15 | 1.8 | 0.46 | 0.49 | 0.97 | 3.2 | 4.8 | 9.9 |
| 16 | 0.8 | 0.46 | 0.49 | 0.97 | 1.4 | 2.0 | 4.0 |
| 17 | 2.1 | 0.46 | 0.49 | 0.97 | 3.7 | 5.4 | 10.9 |
| 18 | 1.4 | 0.46 | 0.49 | 0.97 | 2.5 | 3.6 | 6.9 |
| 19 | 0.6 | 0.46 | 0.49 | 0.97 | 1.1 | 1.6 | 3.0 |
| 20 | 0.3 | 0.46 | 0.49 | 0.97 | 0.5 | 0.8 | 1.6 |
| 21 | 0.9 | 0.46 | 0.49 | 0.97 | 1.6 | 2.3 | 4.4 |
| 22 | 0.7 | 0.46 | 0.49 | 0.97 | 1.2 | 1.8 | 3.6 |
| 23 | 1.2 | 0.46 | 0.49 | 0.97 | 2.3 | 3.1 | 5.9 |
| 24 | 0.9 | 0.46 | 0.49 | 0.97 | 1.6 | 2.3 | 4.4 |
| 25 | 1.4 | 0.46 | 0.49 | 0.97 | 2.5 | 3.6 | 6.9 |
| 26 | 2.0 | 0.46 | 0.49 | 0.97 | 3.5 | 5.1 | 9.9 |
| 27 | 1.3 | 0.46 | 0.49 | 0.97 | 2.3 | 3.3 | 6.4 |
| 28 | 1.3 | 0.46 | 0.49 | 0.97 | 2.3 | 3.3 | 6.4 |
| 29 | 1.0 | 0.46 | 0.49 | 0.97 | 1.8 | 2.6 | 4.8 |
| 30 | 1.0 | 0.46 | 0.49 | 0.97 | 1.8 | 2.6 | 4.8 |
| 31 | 1.5 | 0.46 | 0.49 | 0.97 | 2.6 | 3.8 | 7.4 |
| 32 | 0.9 | 0.46 | 0.49 | 0.97 | 1.6 | 2.3 | 4.4 |
| 33 | 1.8 | 0.46 | 0.49 | 0.97 | 3.2 | 4.6 | 8.9 |
| 34 | 1.6 | 0.46 | 0.49 | 0.97 | 2.8 | 4.1 | 7.9 |
| 35 | 4.3 | 0.46 | 0.49 | 0.97 | 7.5 | 10.3 | 19.9 |
| 36 | 4.8 | 0.46 | 0.49 | 0.97 | 8.6 | 12 | 24 |
| 37 | 1.1 | 0.46 | 0.49 | 0.97 | 1.9 | 2.8 | 5.4 |
| 38 | 0.4 | 0.46 | 0.49 | 0.97 | 0.7 | 1.0 | 2.0 |
| 39 | 1.2 | 0.46 | 0.49 | 0.97 | 2.1 | 3.1 | 5.9 |
| 40 | 0.4 | 0.46 | 0.49 | 0.97 | 0.7 | 1.0 | 2.0 |
| 41 | 0.2 | 0.57 | 0.61 | 1.14 | 0.4 | 0.6 | 1.1 |
| 42 | 0.6 | 0.46 | 0.49 | 0.97 | 1.1 | 1.6 | 3.0 |
| 43 | 0.7 | 0.46 | 0.49 | 0.97 | 1.2 | 1.8 | 3.6 |
| 44 | 0.2 | 0.46 | 0.49 | 0.97 | 0.4 | 0.5 | 1.0 |
| 45 | 0.5 | 0.46 | 0.49 | 0.97 | 0.9 | 1.3 | 2.5 |
| 46 | 0.9 | 0.46 | 0.49 | 0.97 | 1.4 | 2.0 | 4.0 |
| 47 | 0.3 | 0.46 | 0.49 | 0.97 | 0.5 | 0.8 | 1.6 |
| 48 | 0.2 | 0.46 | 0.49 | 0.97 | 0.4 | 0.5 | 1.0 |
| 49 | 0.9 | 0.46 | 0.49 | 0.97 | 1.6 | 2.3 | 4.4 |
| 50 | 0.3 | 0.46 | 0.49 | 0.97 | 0.5 | 0.8 | 1.6 |
| 51 | 0.8 | 0.46 | 0.49 | 0.97 | 1.4 | 2.0 | 4.0 |
| 52 | 1.2 | 0.46 | 0.49 | 0.97 | 2.1 | 3.1 | 5.9 |
| 53 | 0.8 | 0.46 | 0.49 | 0.97 | 1.4 | 2.0 | 4.0 |

