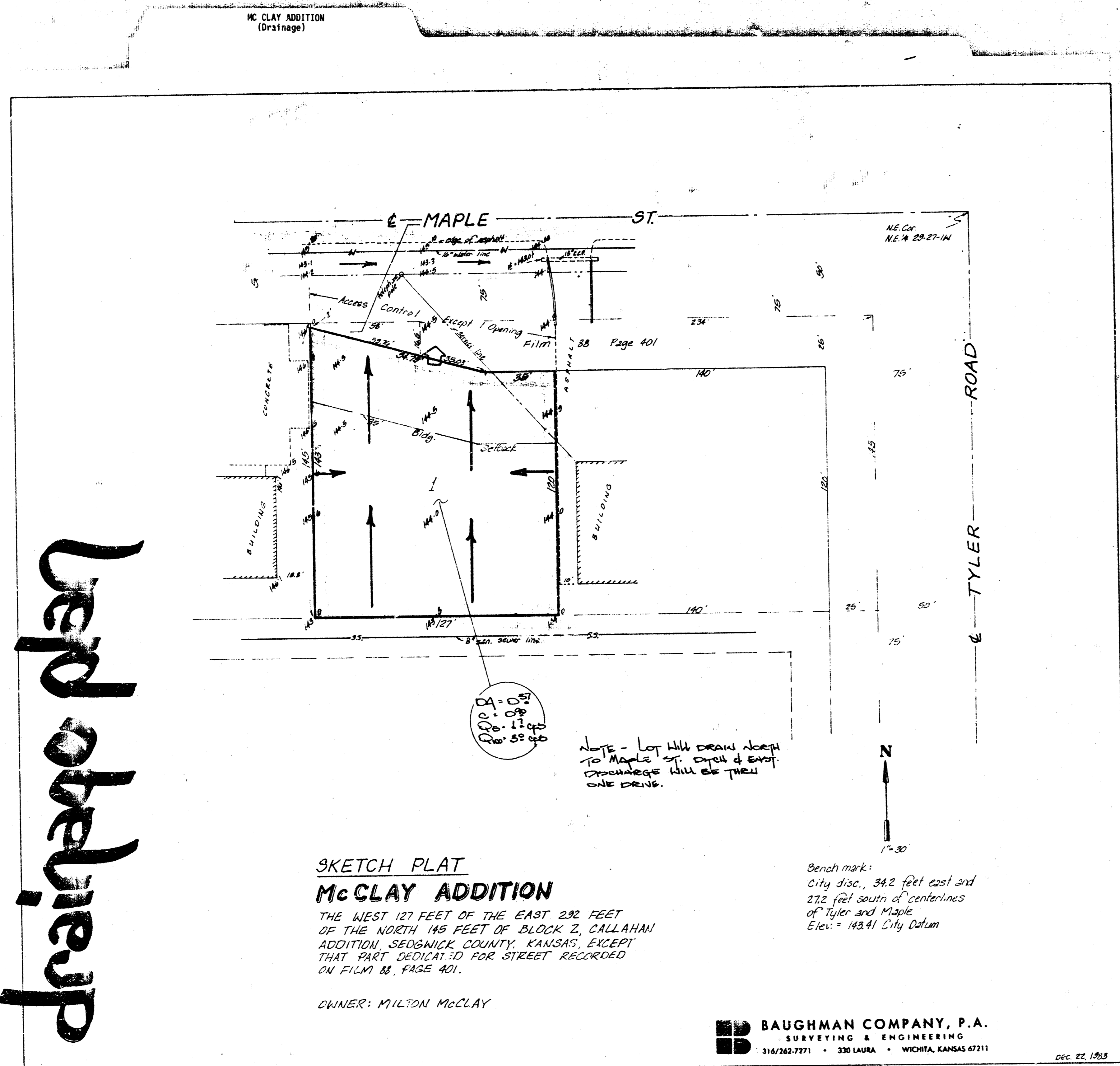


Level obelisk up



BAUGHMAN COMPANY, P.A. SURVEYING & ENGINEERING 316/262-7271 • 330 LAURA • WICHITA, KANSAS 67211		CONFIRMATION MEMO	
PROJECT	McCLAY ADDITION	DATE	12-22-83
TO	Chris Breitenstein	COPIES TO	
FROM	N. Brent Wooten		
REFERENCE	Drainage plan		

Final plat is scheduled for subdivision for Jan. 5, 1983.
 Lot will be developed commercially with a runoff factor of 0.9. The lot will drain to Maple St. ditch to the north. The ditch drains east as indicated. Discharge to the ditch and Maple will be thru a single drive.

Sketch plan shows proposed grading against existing slope. Existing ground elevation at SW corner of lot is 145.0. Existing R.O. ditch at Maple is 145.1.

BAUGHMAN COMPANY, P.A.
 SURVEYING & ENGINEERING
 316/262-7271 • 330 LAURA • WICHITA, KANSAS 67211
 DEC 22, 1983