

9748-130
JTC 2-9-78

MEDITERRANEAN DENTAL PLAZA
STORM DRAINAGE ON 29TH ST NORTH

LOTS 1 & 2 BLOCK 1 MED DENTAL PLAZA ALONG W/ N 1/2 &
PARKING ON 29TH ST NORTH AREA = 3.45 ACRES

AREA	CS	CO	TENN	IS	I ₁₀₀	Q _s	Q ₁₀₀
3.45 ACRES	0.85	0.90	15	4.50	7.37	13.37 cfs	22.88 cfs

FROM EARLIER DRAINAGE PLAN - LOT 14 & 15 BLOCK 1 MED PLAZA &
N 1/2 PARKING ON 29TH ST NORTH AREA = 4.77 ACRES

AREA	CS	CO	TENN	IS	I ₁₀₀	Q _s	Q ₁₀₀
4.77	0.85	0.90	15	4.50	7.37	18.48 cfs	31.01 cfs

DECREASE IN A
1.32 ACRES
5.11 cfs
8.74 cfs (25%)

STORM SEWER HEC 12 SINGLE INLET REPORT

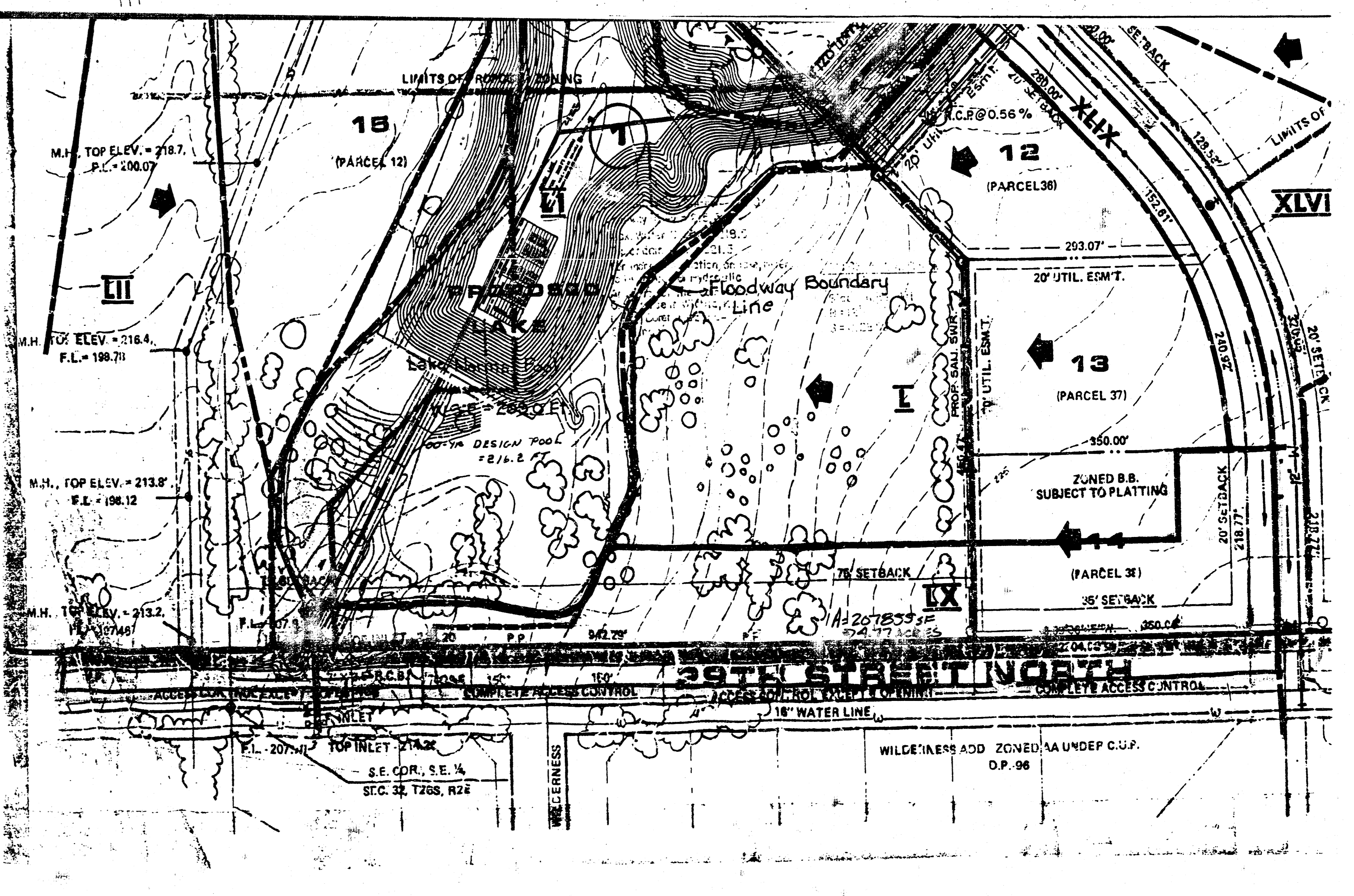
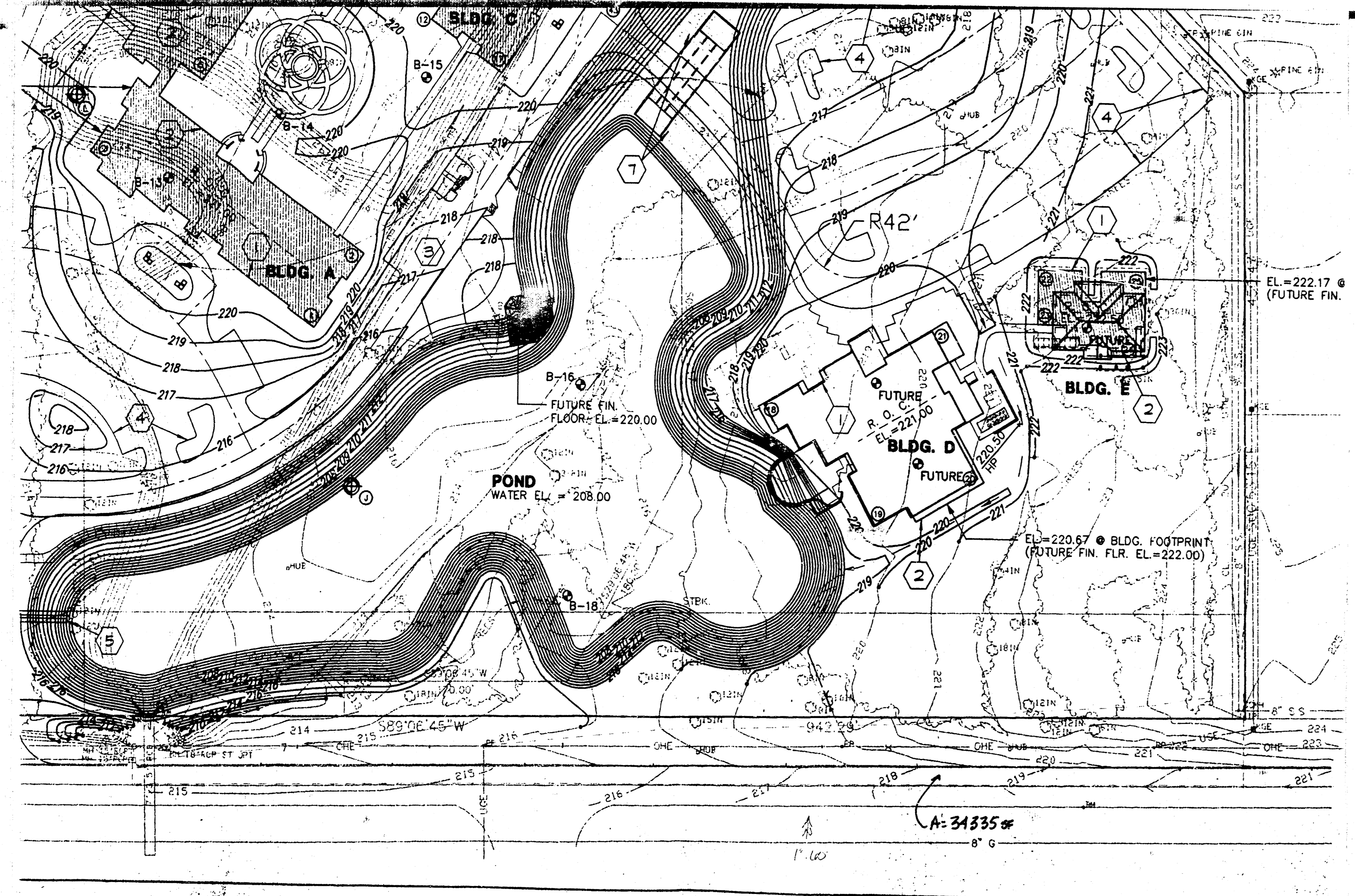
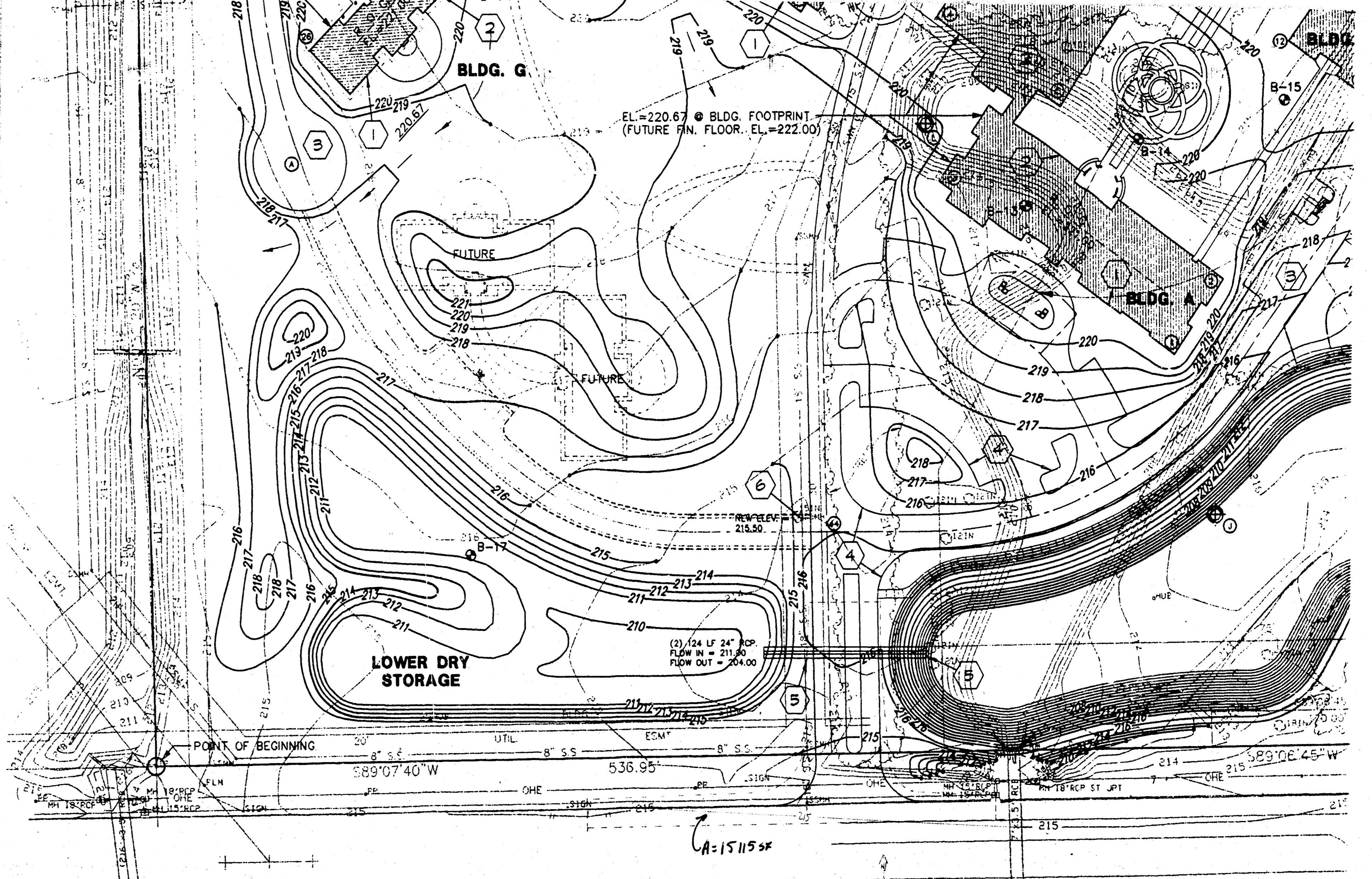
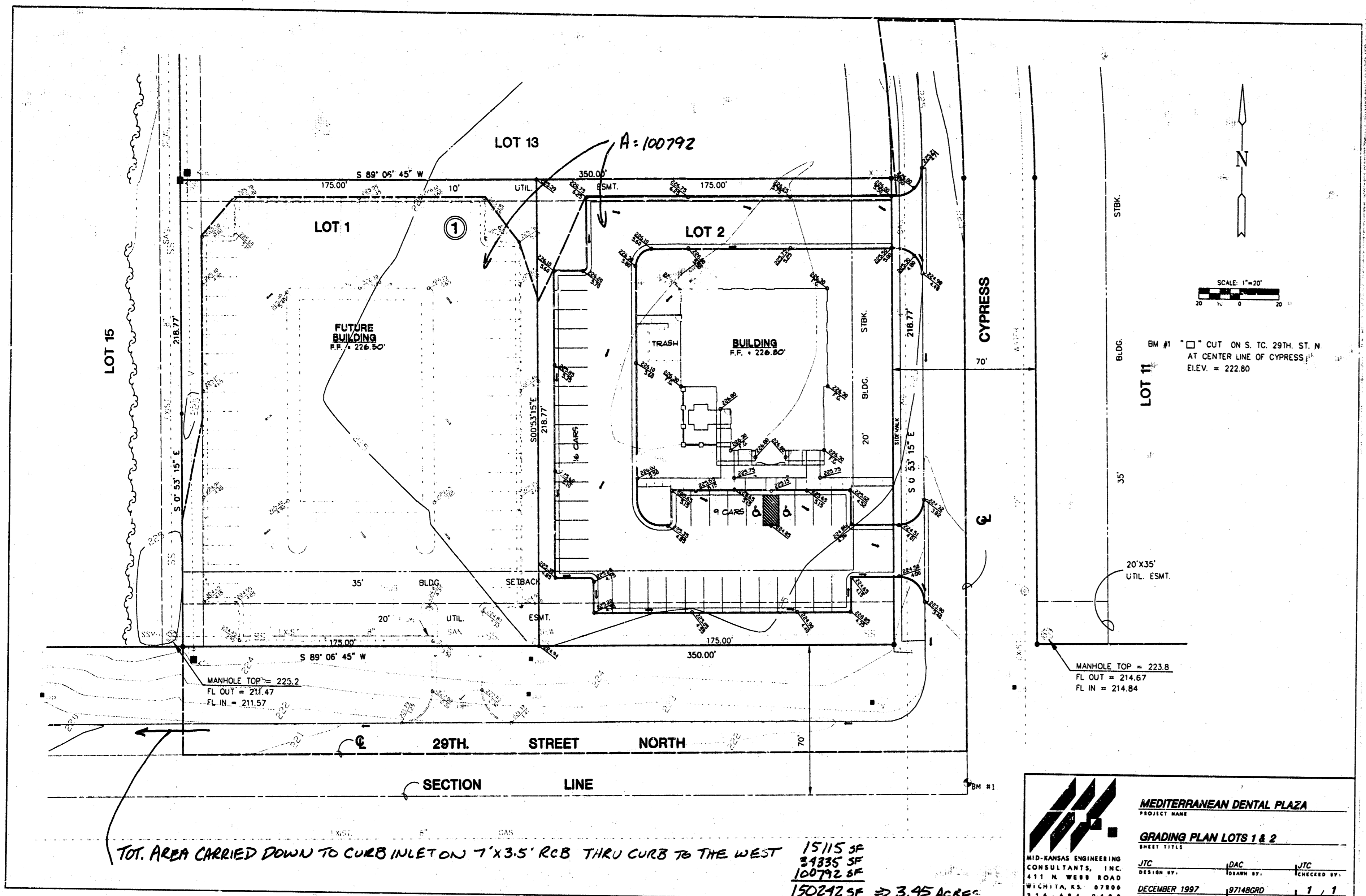
FLOW RESULTS (cfs):
 Flow from Catchment = 13.37 PONDING WIDTH (ft) = 19.36
 Carryover from previous inlet = 0.00 DEPTH AT CURB (ft) = 0.60
 Total flow to current inlet = 13.37 EFFICIENCY (%) = 100.00
 Intercepted by current inlet = 13.37 Grate = * Total = 100.00
 Bypassed by current inlet = 0.00 Slot = *

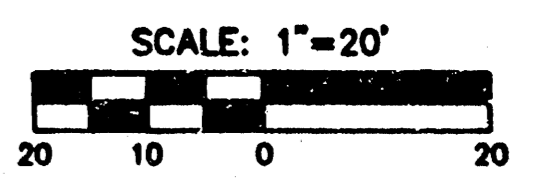
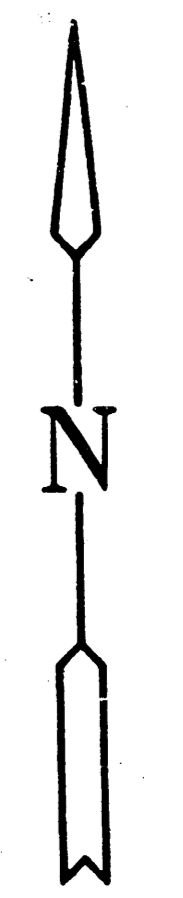
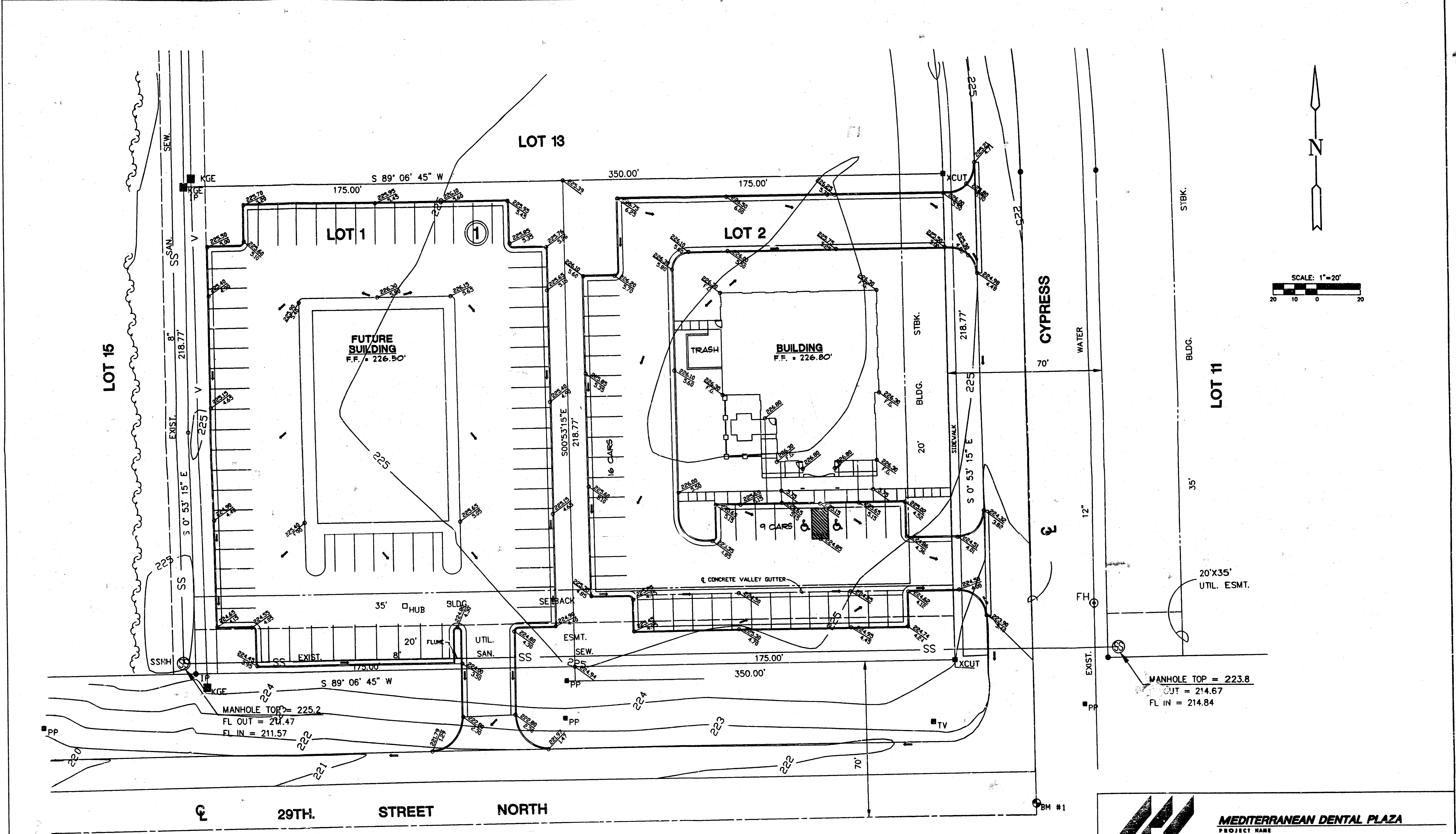
INPUT PARAMETERS:
 Inlet Type = CURB IN SAG Longitudinal Slope (ft/ft) = 0.000
 Gutter Width (ft) = 4.167 Pavement Cross Slope (ft/ft) = 0.031
 Inlet n-value = 0.016 Normal Gutter XSlope (ft/ft) = 0.031
 Downstream Inlet number = 0 Gutter depression (in) = 5.72
 Curb Throat Type = Inclined
 Inlet Opening Ht (in) = 6.00
 Curb Opening Lgth (ft) = 5.00
 Curb Weir Coeff. = 2.300
 Curb Orifice Coeff. = 0.670
 Incline Angle (deg) = 60.00

STORM SEWER HEC 12 SINGLE INLET REPORT

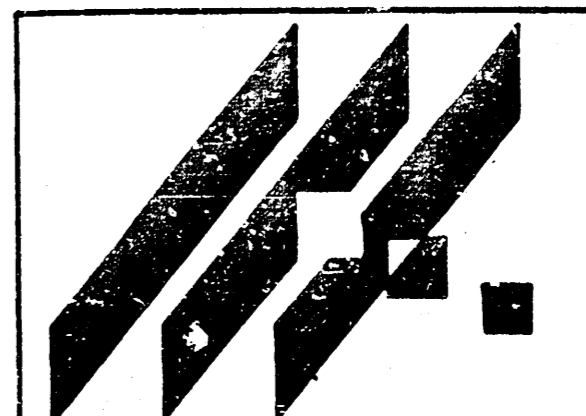
FLOW RESULTS (cfs):
 Flow from Catchment = 18.48 PONDING WIDTH (ft) = 24.03
 Carryover from previous inlet = 0.00 DEPTH AT CURB (ft) = 0.74
 Total flow to current inlet = 18.48 EFFICIENCY (%) = 100.00
 Intercepted by current inlet = 18.48 Grate = * Total = 100.00
 Bypassed by current inlet = 0.00 Slot = *

INPUT PARAMETERS:
 Inlet Type = CURB IN SAG Longitudinal Slope (ft/ft) = 0.000
 Gutter Width (ft) = 4.167 Pavement Cross Slope (ft/ft) = 0.031
 Inlet n-value = 0.016 Normal Gutter XSlope (ft/ft) = 0.031
 Downstream Inlet number = 0 Gutter depression (in) = 5.72
 Curb Throat Type = Inclined
 Inlet Opening Ht (in) = 6.00
 Curb Opening Lgth (ft) = 5.00
 Curb Weir Coeff. = 2.300
 Curb Orifice Coeff. = 0.670
 Incline Angle (deg) = 60.00





BM #1 "□" CUT ON S. TC. 29TH. ST. N.
AT CENTER LINE OF CYPRESS
ELEV. = 222.80



MEDITERRANEAN DENTAL PLAZA
PROJECT NAME

GRADING PLAN LOTS 1 & 2
SHEET TITLE

MID-KANSAS ENGINEERING
CONSULTANTS, INC.
411 N. WEBB ROAD
WICHITA, KS. 67206
316-684-9600

JTC DESIGN BY.	DAC DRAWN BY.	JTC CHECKED BY.
NOVEMBER 1997 DATE	97148GRD JOB NO.	1 / 1 SHEET OF 208

R. VANCE, MEDICAL PLAZA URBAN, P1, NOV. 21, 08, 17:56 1997