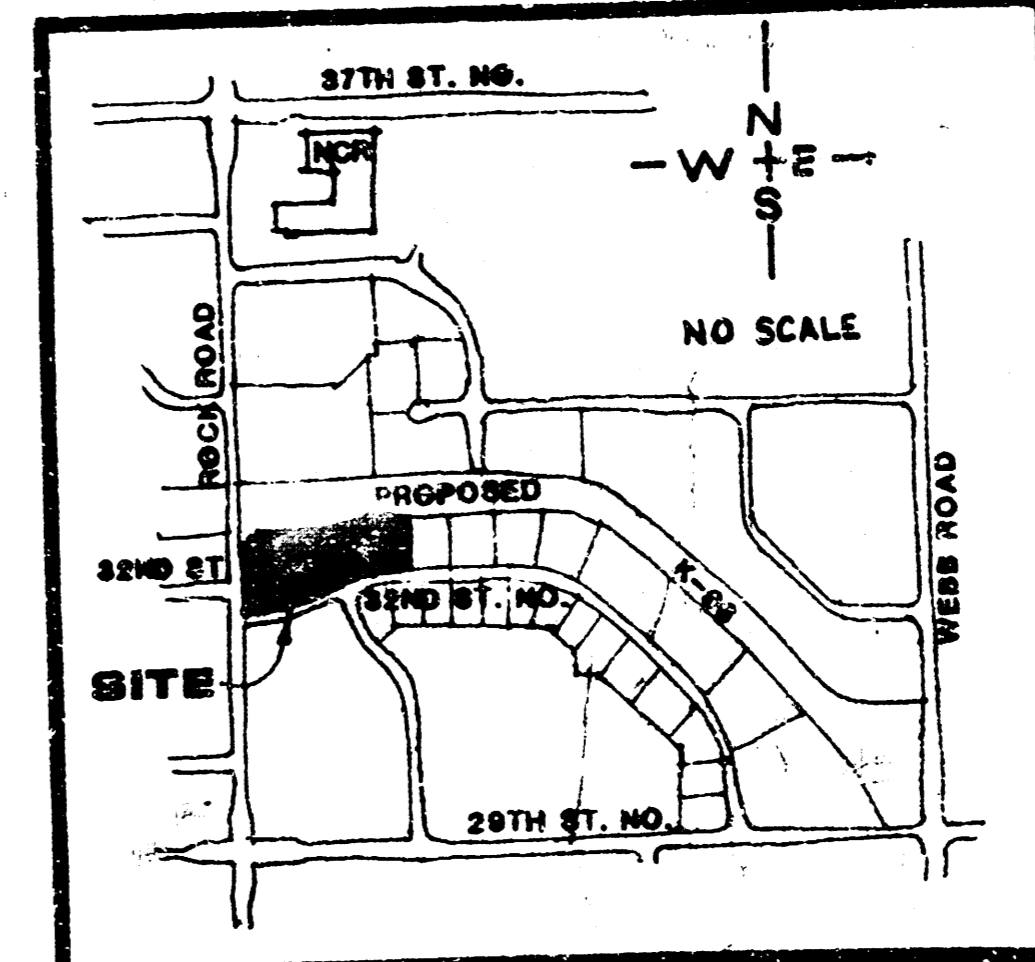


**NOTES:**

- 1) BENCHMARK: CITY STANDARD, 44' SOUTH AND 48' WEST OF THE CENTERLINE OF ROCK ROAD AND 29TH STREET NORTH ELEV. - 213.30.
- 2) A DRAINAGE CONCEPT PLAN HAS BEEN PREPARED BY MID-KANSAS ENGINEERING CONSULTANTS, P.A.
- 3) CONTOURS TAKEN FROM MKEC TOFO.

**APPROVED  
DRAINAGE PLAN**



MID-KANSAS ENGINEERING CONSULTANTS PA  
3500 NORTH ROCK ROAD  
BUILDING 1800  
WICHITA, KANSAS 67226  
636-5566

**DRAINAGE PLAN  
MEDITERRANEAN PLAZA 2ND.**

TOTAL ACRES - 10.9