

SAND ST. NO.

SAND ST. NO.

SAND ST. NO.

SAND ST. NO.

SAND ST. NO.

SAND ST. NO.

30TH ST. NO.

30TH ST. NO.

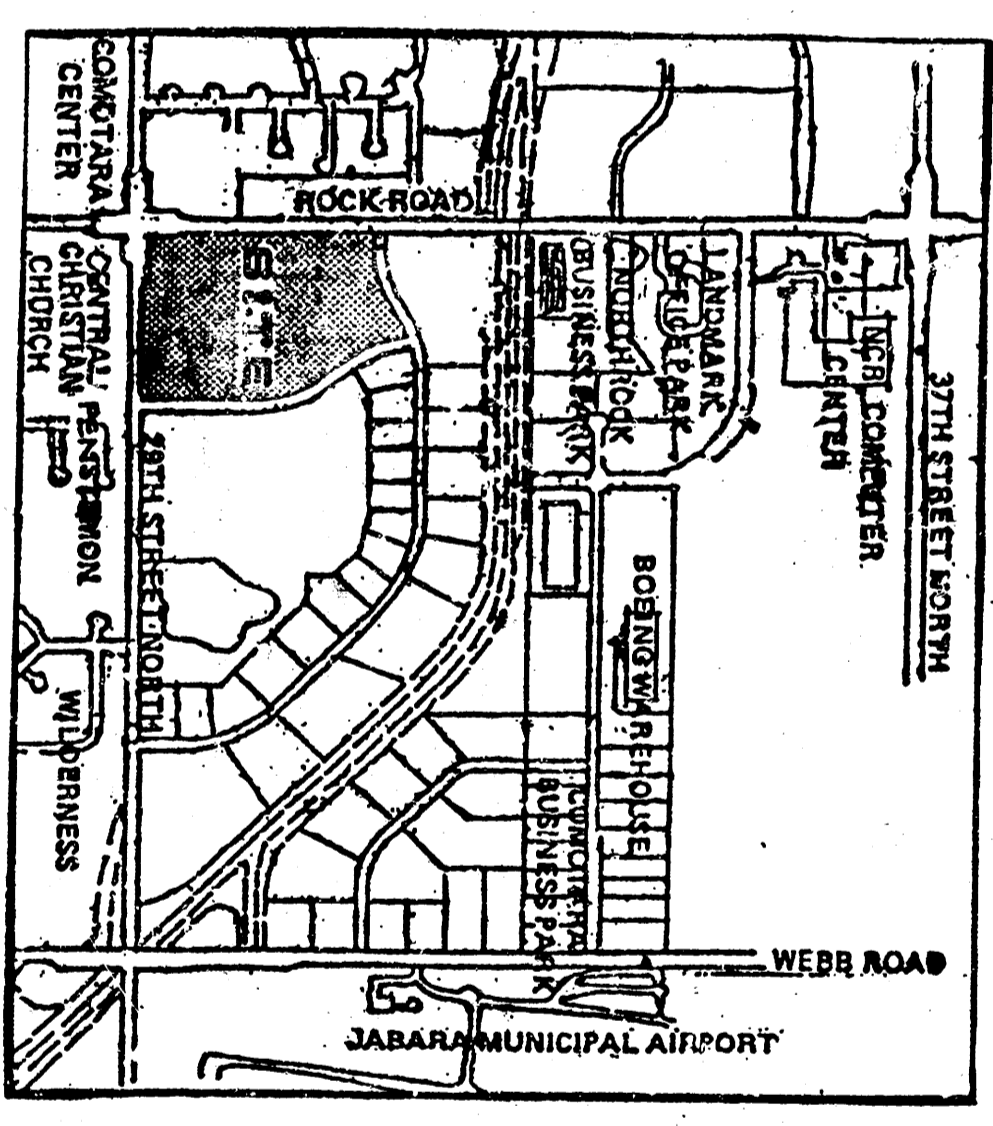
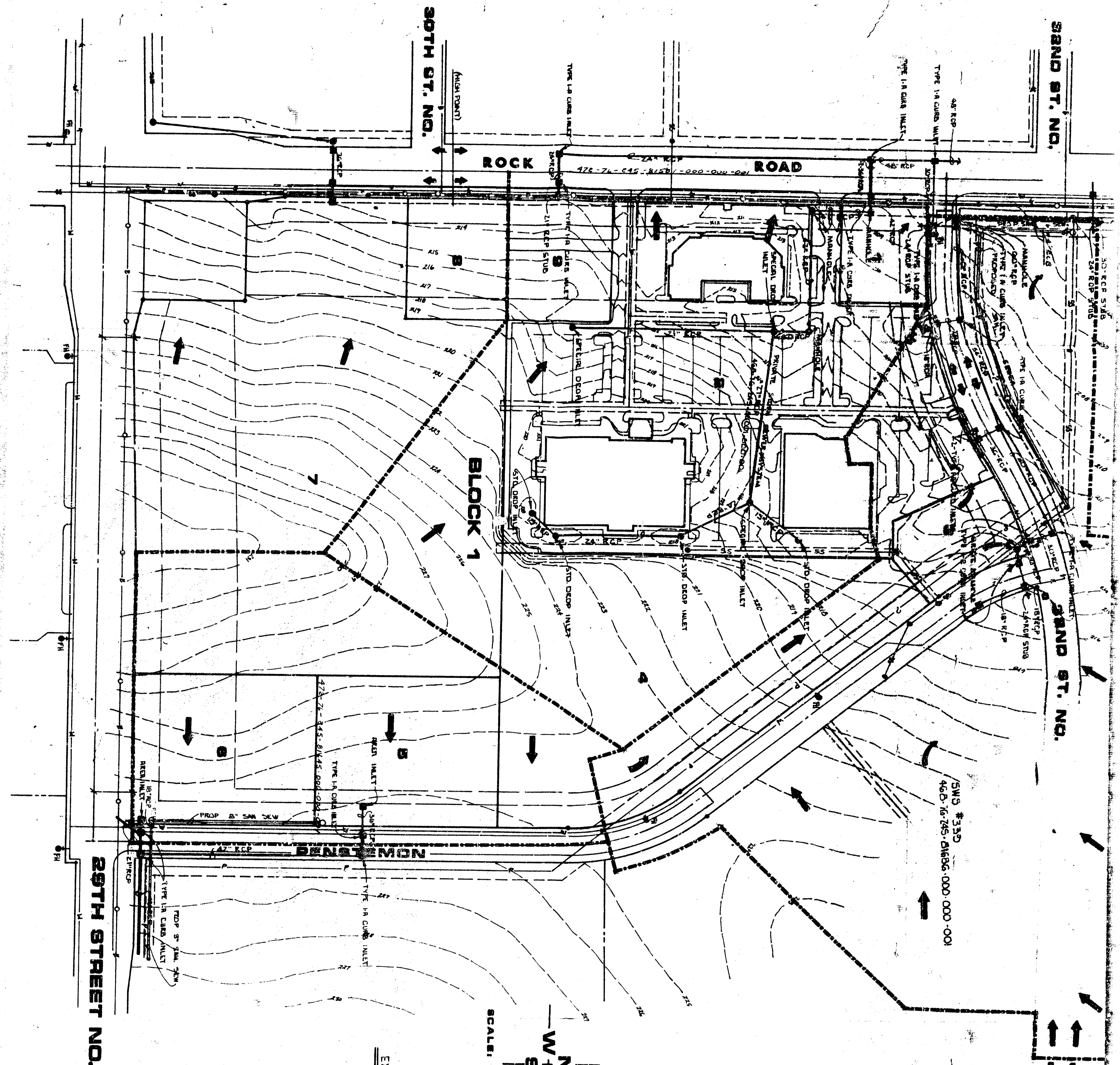
30TH ST. NO.

30TH ST. NO.

30TH ST. NO.

30TH ST. NO.

30TH ST. NO.



EXISTING STORM SEWER SYSTEMS
 AUG. 1, 1958
 RUG. 1, 1958

LOCATION MAP
 NO SCALE

MEDITERRANEAN PLAZA COMM. SECOND ADDITION

DRAINAGE & UTILITY CONCEPT A REPEAT OF MEDITERRANEAN PLAZA COMMERCIAL ADD. UNDER C.U.P., D.P.-111

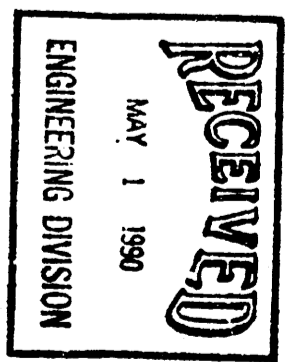
NOTES

We are sending the following items:

- Prints
- Specifications
- Legal Descriptions
- Tracings
- Partitions
- Correspondence
- Other

COMMENTS: Reference our meeting of April 18, 1958. Attached please find storage and excavation calculations for Mediterranean Plaza Commercial Second Addition. A set of plans were filed with you on April 18.

REMARKS: The sanitary sewer measurements, outlet pipes and weirs, etc. will be completed under flood detention provision.



Signed: *[Signature]*
 Title: *[Title]*



PROJECT: Mediterranean Plaza Lakes
 Flood Detention Sinks
 DATE: 04/25/58

MEDITERRANEAN PLAZA LAKES - K-96 BYPASS BORROW PITS
 SOUTH LAKE #1 (STORAGE)

Elevation	Surface Area (Ac)	Ave. Depth (FT)	Incremental Volume (MC-FT)	Storage Above 200.0
200	0.31	0.37	0.37	0
201	0.43	0.475	0.475	0.37
202	0.52	0.575	0.575	0.84
203	0.63	0.68	0.68	1.42
204	0.73	0.78	0.78	2.10
205	0.83	0.88	0.88	2.88
206	0.93	0.98	0.98	3.76
207	1.04	1.09	1.09	4.74
208	1.14	1.205	1.205	5.84
209	1.27	1.335	1.335	7.04
210	1.40	1.465	1.465	8.38
211	1.53	1.60	1.60	9.84
212	1.67	1.735	1.735	11.44
213	1.80	1.875	1.875	13.18
214	1.95	2.015	2.015	15.06
215	2.08	2.19	2.19	17.06
216	2.20			19.26
217				21.42
218				23.42

MEDITERRANEAN PLAZA LAKES - K-96 BYPASS BORROW PITS
 SOUTH LAKE #1 (EXCAVATION)

Elevation	Surface Area (Ac)	Ave. Depth (FT)	Incremental Volume (MC-FT)	Storage Above 200.0
200	0.31	0.37	0.37	0
201	0.43	0.475	0.475	0.37
202	0.52	0.575	0.575	0.84
203	0.63	0.68	0.68	1.42
204	0.73	0.78	0.78	2.10
205	0.83	0.88	0.88	2.88
206	0.93	0.98	0.98	3.76
207	1.04	1.09	1.09	4.74
208	1.14	1.205	1.205	5.84
209	1.27	1.335	1.335	7.04
210	1.40	1.465	1.465	8.38
211	1.53	1.60	1.60	9.84
212	1.67	1.735	1.735	11.44
213	1.80	1.875	1.875	13.18
214	1.95	2.015	2.015	15.06
215	2.08	2.19	2.19	17.06
216	2.20			19.26
217				21.42
218				23.42

MEDITERRANEAN PLAZA LAKES - K-96 BYPASS BORROW PITS
 SOUTH MIDDLE LAKE #11 (STORAGE)

Elevation	Surface Area (Ac)	Ave. Depth (FT)	Incremental Volume (MC-FT)	Storage Above 200.0
202	0.30	0.32	0.32	0
203	0.34	0.365	0.365	0.32
204	0.39	0.415	0.415	0.68
205	0.44	0.465	0.465	1.10
206	0.49	0.52	0.52	1.56
207	0.55	0.575	0.575	2.06
208	0.60	0.63	0.63	2.66
209	0.66	0.69	0.69	3.29
210	0.72	0.755	0.755	3.98
211	0.79	0.825	0.825	4.74
212	0.88	0.90	0.90	5.57
213	0.96	0.98	0.98	6.49
214	1.04	1.065	1.065	7.49
215	1.13	1.17	1.17	8.58
216	1.21	1.285	1.285	9.75
217	1.30	1.345	1.345	11.00
218	1.39			12.34
219				13.76
220				15.26
221				16.84
222				18.50
223				20.24
224				22.06
225				23.96
226				25.94
227				28.00
228				30.14
229				32.36
230				34.66
231				37.04
232				39.50
233				42.04
234				44.66
235				47.36
236				50.14
237				53.00
238				55.94
239				58.96
240				62.06
241				65.24
242				68.50
243				71.84
244				75.26
245				78.76
246				82.34
247				86.00
248				89.74
249				93.56
250				97.46
251				101.44
252				105.50
253				109.64
254				113.86
255				118.16
256				122.54
257				127.00
258				131.54
259				136.16
260				140.86
261				145.64
262				150.50
263				155.44
264				160.46
265				165.56
266				170.74
267				176.00
268				181.34
269				186.76
270				192.26
271				197.84
272				203.50
273				209.24
274				215.06
275				220.96
276				226.94
277				233.00
278				239.14
279				245.36
280				251.66
281				258.04
282				264.50
283				271.04
284				277.66
285				284.36
286				291.14
287				298.00
288				304.94
289				311.96
290				319.06
291				326.24
292				333.50
293				340.84
294				348.26
295				355.76
296				363.34
297				371.00
298				378.74
299				386.56
300				394.46
301				402.44
302				410.50
303				418.64
304				426.86
305				435.16
306				443.54
307				452.00
308				460.54
309				469.16
310				477.86
311				486.64
312				495.50
313				504.44
314				513.46
315				522.56
316				531.74
317				541.00
318				550.34
319				559.76
320				569.26
321				578.84
322				588.50
323				598.24
324				608.06
325				617.96
326				627.94
327				638.00
328				648.14
329				658.36
330				668.66
331				679.04
332				689.50
333				700.04
334				710.66
335				721.36
336				732.14
337				743.00
338				753.94
339				764.96
340				776.06
341				787.24
342				798.50
343				809.84
344				821.26
345				832.76
346				844.34
347				856.00
348				867.74
349				879.56
350				891.46
351				903.44
352				915.50
353				927.64
354				939.86
355				952.16
356				964.54
357				977.00
358				989.54
359				1002.16
360				1014.86
361				1027.64
362				1040.50
363				1053.44
364				1066.46
365				1079.56
366				1092.74
367				1106.00
368				1119.34
369				1132.76
370				1146.26
371				1159.84
372				1173.50
373				1187.24
374				1201.06
375				1214.96
376				1228.94
377				1243.00
378				1257.14
379				1271.36
380				1285.66
381				1299.94
382				1314.30
383				1328.74
384				1343.26
385				1357.86
386				1372.54
387				1387.30
388				1402.14
389				1417.06
390				1432.06
391				1447.14
392				1462.30
393				1477.54
394				1492.86
395				1508.26
396				1523.74
397				1539.30
398				1554.94
399				1570.66
400				1586.46
401				1602.34
402				1618.30
403				1634.34
404				1650.46
405				1666.66
406				1682.94
407				1700.30
408				1717.74
409				1735.26
410				1752.86
411				1770.54
412				1788.30
413				1806.14
414				1824.06
415				1842.06
416				1860.14
417				1878.30
418				1896.54
419				1914.86
420				1933.26
421				1951.74
422				1970.30
423				1988.94
424				2007.66
425				2026.46
426				2045.34
427				2064.30
428				2083.34
429				2102.46
430				2121.66
431				2140.94
432				216

MEDITERRANEAN PLAZA LAKES - K-96 BYPASS BORROW PITS

SOUTH NORTH LAKE #III (EXCAVATION)

Elevation	Surface Area (AC)	Ave. Area	Depth (FT)	Incremental Volume (AC-FT)
204	0.42	0.465	1	0.465
205	0.51	0.56	1	0.56
206	0.61	0.67	1	0.67
207	0.73	0.795	1	0.795
208	0.86	0.92	1	0.92
209	0.98	1.03	1	1.03
210	1.08	1.08	1	0.98
211	0.88	0.905	1	0.905
212	0.93	0.97	1	0.97
213	1.01	1.045	1	1.045
214	1.08	1.11	1	1.11
215	1.14	1.16	1	1.16
216	1.18	1.145	1	1.145
217	1.11	0.73	1	0.73
218	0.35	0.205	1	0.205
219	0.06	0.065	1	0.065
220	0.07	0.06	1	0.06
221	0.05	0.025	1	0.025
222	0.00			

12.84 AC-FT
559,310 FT³
20,700 C.Y.

MEDITERRANEAN PLAZA LAKES - K-96 BYPASS BORROW PITS

MIDDLE LAKE #IV (STORAGE)

Elevation	Surface Area (AC)	Ave. Area	Depth (FT)	Incremental Volume (AC-FT)	Storage Above 205.0	Storage Above 213.0
205	2.11	2.175	1	2.175	0	0
206	2.24	2.305	1	2.305	2.18	0
207	2.37	2.435	1	2.435	4.48	0
208	2.50	2.565	1	2.565	6.98	0
209	2.63	2.695	1	2.695	9.48	0
210	2.76	2.86	1	2.86	12.18	0
211	2.96	3.045	1	3.045	15.04	0
212	3.13	3.22	1	3.22	18.08	0
213	3.31	3.43	1	3.43	21.30	0
214	3.55	3.655	1	3.655	24.73	3.43
215	3.78	3.885	1	3.885	28.40	7.10
216	3.99	4.105	1	4.105	32.28	10.98
217	4.22	4.33	1	4.33	36.38	15.08
218	4.44	4.555	1	4.555	40.72	19.42
219	4.67				45.27	23.97

MEDITERRANEAN PLAZA LAKES - K-96 BYPASS BORROW PITS

ADD. MIDDLE LAKE #IV (STORAGE)

Elevation	Surface Area (AC)	Ave. Area	Depth (FT)	Incremental Volume (AC-FT)	Storage Above 205.0	Storage Above 213.0	Totals (Both Pages)
205	0.41	0.425	1	0.425	0	0	
206	0.44	0.45	1	0.45	0.42	0	
207	0.46	0.475	1	0.475	0.88	0	
208	0.49	0.505	1	0.505	1.35	0	
209	0.52	0.535	1	0.535	1.96	0	
210	0.55	0.56	1	0.56	2.39	0	
211	0.57	0.585	1	0.585	2.95	0	
212	0.60	0.615	1	0.615	3.54	0	
213	0.63	0.65	1	0.65	4.15	0	
214	0.67	0.685	1	0.685	4.80	0.65	4.08
215	0.70	0.72	1	0.72	5.48	1.34	8.44
216	0.74	0.755	1	0.755	6.20	2.08	13.04
217	0.77	0.79	1	0.79	6.96	2.81	17.89
218	0.81	0.83	1	0.83	7.75	3.60	23.02
219	0.85				8.58	4.43	28.40

MEDITERRANEAN PLAZA LAKES - K-96 BYPASS BORROW PITS

MIDDLE LAKE #IV (EXCAVATION)

Elevation	Surface Area (AC)	Ave. Area	Depth (FT)	Incremental Volume (AC-FT)
205	2.11	2.175	1	2.175
206	2.24	2.305	1	2.305
207	2.37	2.435	1	2.435
208	2.50	2.565	1	2.565
209	2.63	2.695	1	2.695
210	2.76	2.86	1	2.86
211	2.96	3.045	1	3.045
212	3.13	3.195	1	3.195
213	3.26	3.22	1	3.22
214	3.42	3.48	1	3.48
215	3.54	3.60	1	3.60
216	3.66	3.73	1	3.73
217	3.80	3.855	1	3.855
218	3.91	3.98	1	3.98
219	4.05	3.985	1	3.985
220	3.92	3.415	1	3.415
221	2.91	2.30	1	2.30
222	1.69	1.245	1	1.245
223	0.80	0.465	1	0.465
224	0.13			

54.67 AC-FT
2,381,425 FT³
88,200 C.Y.

MEDITERRANEAN PLAZA LAKES - K-96 BYPASS BORROW PITS

ADD. MIDDLE LAKE #IV (EXCAVATION)

Elevation	Surface Area (AC)	Ave. Area	Depth (FT)	Incremental Volume (AC-FT)
205	0.41	0.425	1	0.425
206	0.44	0.45	1	0.45
207	0.46	0.475	1	0.475
208	0.49	0.505	1	0.505
209	0.52	0.535	1	0.535
210	0.55	0.56	1	0.56
211	0.57	0.585	1	0.585
212	0.60	0.615	1	0.615
213	0.63	0.65	1	0.65
214	0.67	0.685	1	0.685
215	0.70	0.72	1	0.72
216	0.74	0.755	1	0.755
217	0.77	0.79	1	0.79
218	0.81	0.83	1	0.83
219	0.85	0.865	1	0.865
220	0.88	0.805	1	0.805
221	0.73	0.505	1	0.505
222	0.28	0.17	1	0.17
223	0.06			

10.92 AC-FT
475,893 FT³
17,600 C.Y.
Total Both Pages 105,800 C.Y.

MEDITERRANEAN PLAZA LAKES - K-96 BYPASS BORROW PITS

NORTH LAKE #V (STORAGE)

Elevation	Surface Area (AC)	Ave. Area	Depth (FT)	Incremental Volume (AC-FT)	Storage Above 205.0	Storage Above 215.5	Storage Above 222.0
208	1.67	1.73	1	1.73	0	0	0
209	1.79	1.855	1	1.855	1.73	0	0
210	1.92	1.99	1	1.99	3.58	0	0
211	2.06	2.125	1	2.125	5.58	0	0
212	2.19	2.255	1	2.255	7.70	0	0
213	2.32	2.39	1	2.39	9.96	0	0
214	2.46	2.535	1	2.535	12.34	0	0
215	2.61	2.69	1	2.69	14.88	0	0
216	2.77	2.825	0.5	1.4125	17.57	0	0
216.5	2.88	2.915	0.5	1.4575	18.98	0	0
217	2.95	3.025	1	3.025	20.44	1.46	0
218	3.10	3.18	1	3.18	23.46	4.48	0
219	3.26	3.345	1	3.345	26.64	7.66	0
220	3.43	3.52	1	3.52	29.99	11.01	0
221	3.61	3.685	1	3.685	33.51	14.53	0
222	3.76	3.855	1	3.855	37.20	18.21	0
223	3.95	4.055	1	4.055	41.05	22.07	3.86
224	4.16	4.345	1	4.345	45.10	26.12	7.91
225	4.53	4.715	1	4.715	49.45	30.47	12.36
226	4.90				54.16	35.18	16.97

MEDITERRANEAN PLAZA LAKES - K-96 BYPASS BORROW PITS

NORTH LAKE #V (EXCAVATION)

Elevation	Surface Area (AC)	Ave. Area	Depth (FT)	Incremental Volume (AC-FT)
208	1.67	1.73	1	1.73
209	1.79	1.855	1	1.855
210	1.92	1.99	1	1.99
211	2.06	2.125	1	2.125
212	2.19	2.255	1	2.255
213	2.32	2.39	1	2.39
214	2.46	2.535	1	2.535
215	2.61	2.69	1	2.69
216	2.77	2.825	0.5	1.413
216.5	2.88	2.915	0.5	1.458
217	2.95	3.025	1	3.025
218	3.10	3.18	1	3.18
219	3.26	3.345	1	3.345
220	3.43	3.52	1	3.52
221	3.61	3.685	1	3.685
222	3.72	3.675	1	3.675
223	3.63	3.50	1	3.50
224	3.37	3.155	1	3.155
225	2.94	2.705	1	2.705
226	2.47	2.13	1	2.13
227	1.79			

MEDITERRANEAN PLAZA LAKES - K-96 BYPASS BORROW PITS

NORTH LAKE #V (EXCAVATION CONT'D)

Elevation	Surface Area (AC)	Ave. Area	Depth (FT)	Incremental Volume (AC-FT)
228	1.39	1.245	1	1.245
229	1.10	0.98	1	0.98
230	0.86	0.77	1	0.77
231	0.68	0.605	1	0.605
232	0.53	0.465	1	0.465
233	0.40	0.335	1	0.335
234	0.27	0.165	1	0.165
235	0.06	0.045	1	0.045
236	0.03			
237	0.01			

58.561 AC-FT
2,550,917 FT³
94,478 C.Y.

MEDITERRANEAN PLAZA LAKES - K-96 BYPASS BORROW PITS

NORTHEAST LAKE #VI (STORAGE)

Elevation	Surface Area (AC)	Ave. Area	Depth (FT)	Incremental Volume (AC-FT)	Storage Above 210.0	Storage Above 218.0
210	0.94	0.98	1	0.98	0	0
211	1.02	1.055	1	1.055	0.98	0
212	1.09	1.13	1	1.13	2.04	0
213	1.17	1.21	1	1.21	3.16	0
214	1.25	1.285	1	1.285	4.38	0
215	1.32	1.36	1	1.36	5.66	0
216	1.40	1.44	1	1.44	7.02	0
217	1.48	1.52	1	1.52	8.46	0
218	1.56	1.62	1	1.62	9.98	0
219	1.68	1.735	1	1.735	11.60	1.62
220	1.79	1.85	1	1.85	13.34	3.36
221	1.91	1.975	1	1.975	15.18	5.20
222	2.04	2.10	1	2.10	17.16	7.18
223	2.16	2.21	1	2.21	19.26	9.28
224	2.26				21.47	11.49

MEDITERRANEAN PLAZA LAKES - K-96 BYPASS BORROW PITS

NORTHEAST LAKE #VI (EXCAVATION)

Elevation	Surface Area (AC)	Ave. Area	Depth (FT)	Incremental Volume (AC-FT)
210	0.94	0.98	1	0.98
211	1.02	1.055	1	1.055
212	1.09	1.13	1	1.13
213	1.17	1.21	1	1.21
214	1.25	1.285	1	1.285
215	1.32	1.36	1	1.36
216	1.40	1.44	1	1.44
217	1.48	1.52	1	1.52
218	1.56	1.62	1	1.62
219	1.68	1.735	1	1.735
220	1.79	1.85	1	1.85
221	1.91	1.975	1	1.975
222	2.04	2.10	1	2.10
223	2.16	2.21	1	2.21
224	2.26			
225	1.90	1.635	1	1.635
226	1.37	1.02	1	1.02
227	0.67	0.46	1	0.46
228	0.25	0.20	1	0.20
229	0.15	0.13	1	0.13
230	0.11	0.09	1	0.09
231	0.07	0.055	1	0.055
232	0.04	0.025	1	0.025
233	0.01			

27.16 AC-FT
1,183,307 FT³
43,800 C.Y.