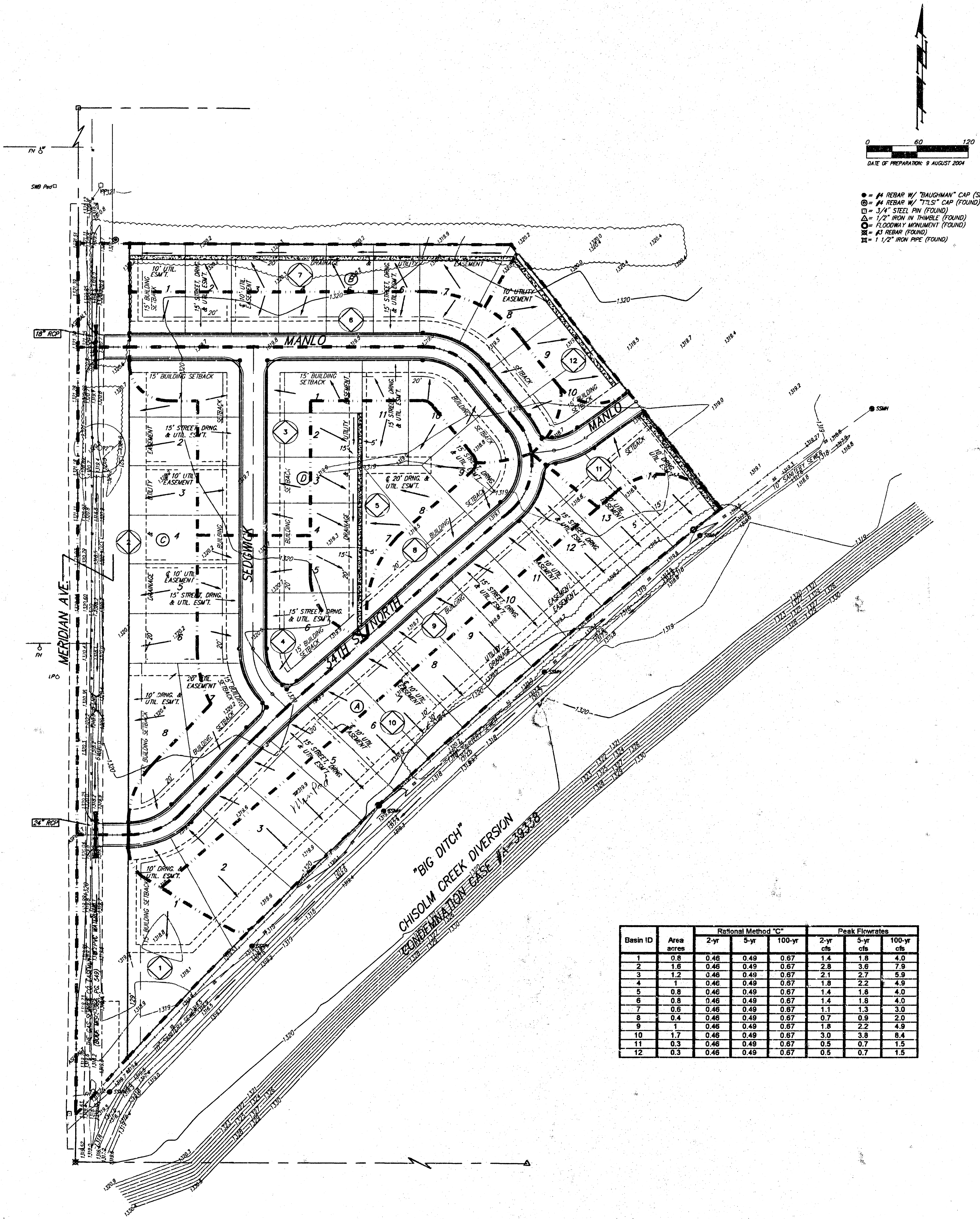


DRAINAGE PLAN MESA VERDE ADDITION WICHITA, SEDGWICK COUNTY, KANSAS



- = #4 REBAR W/ "BAUGHMAN" CAP (SET)
- ⊙ = #4 REBAR W/ "TILS" CAP (FOUND)
- ⊠ = 3/4" STEEL PIN (FOUND)
- △ = 1/2" IRON IN THIMBLE (FOUND)
- = FLOODWAY MONUMENT (FOUND)
- ⊞ = #1 REBAR (FOUND)
- ⊞ = 1 1/2" IRON PIPE (FOUND)

Basin ID	Area acres	Rational Method "C"			Peak Flowrates		
		2-yr	5-yr	100-yr	2-yr cfs	5-yr cfs	100-yr cfs
1	0.8	0.46	0.49	0.67	1.4	1.8	4.0
2	1.6	0.46	0.49	0.67	2.8	3.6	7.9
3	1.2	0.46	0.49	0.67	2.1	2.7	5.9
4	1	0.46	0.49	0.67	1.5	2.2	4.5
5	0.8	0.46	0.49	0.67	1.4	1.8	4.0
6	0.8	0.46	0.49	0.67	1.4	1.8	4.0
7	0.6	0.46	0.49	0.67	1.1	1.3	3.0
8	0.4	0.46	0.49	0.67	0.7	0.9	2.0
9	1	0.46	0.49	0.67	1.5	2.2	4.5
10	1.7	0.46	0.49	0.67	3.0	3.8	8.4
11	0.3	0.46	0.49	0.67	0.5	0.7	1.5
12	0.3	0.46	0.49	0.67	0.5	0.7	1.5

NOTE:
A master grading plan for drainage has been developed for this subdivision and is on file with the City of Wichita, Kansas. All drainage easements, right-of-ways, or reserves shall remain at established grades or as modified with the approval of the City Engineer of the City of Wichita, Kansas. No obstructions which impede the flow of the drainage system are allowed.

NOTE:
ALL LOTS WITHIN MESA VERDE ADDITION SHALL HAVE A 3 FOOT INTERIOR SIDEYARD SETBACK.