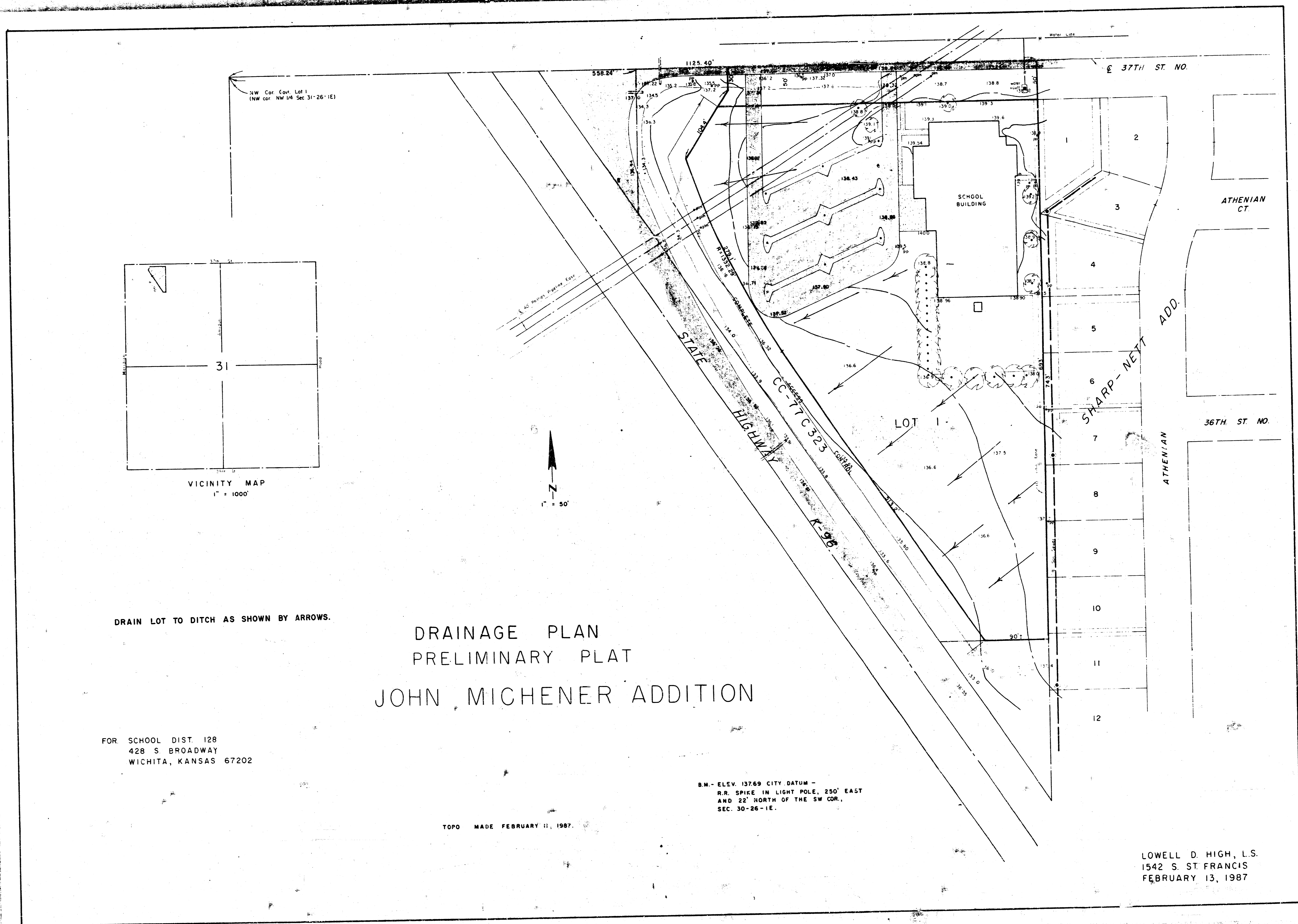
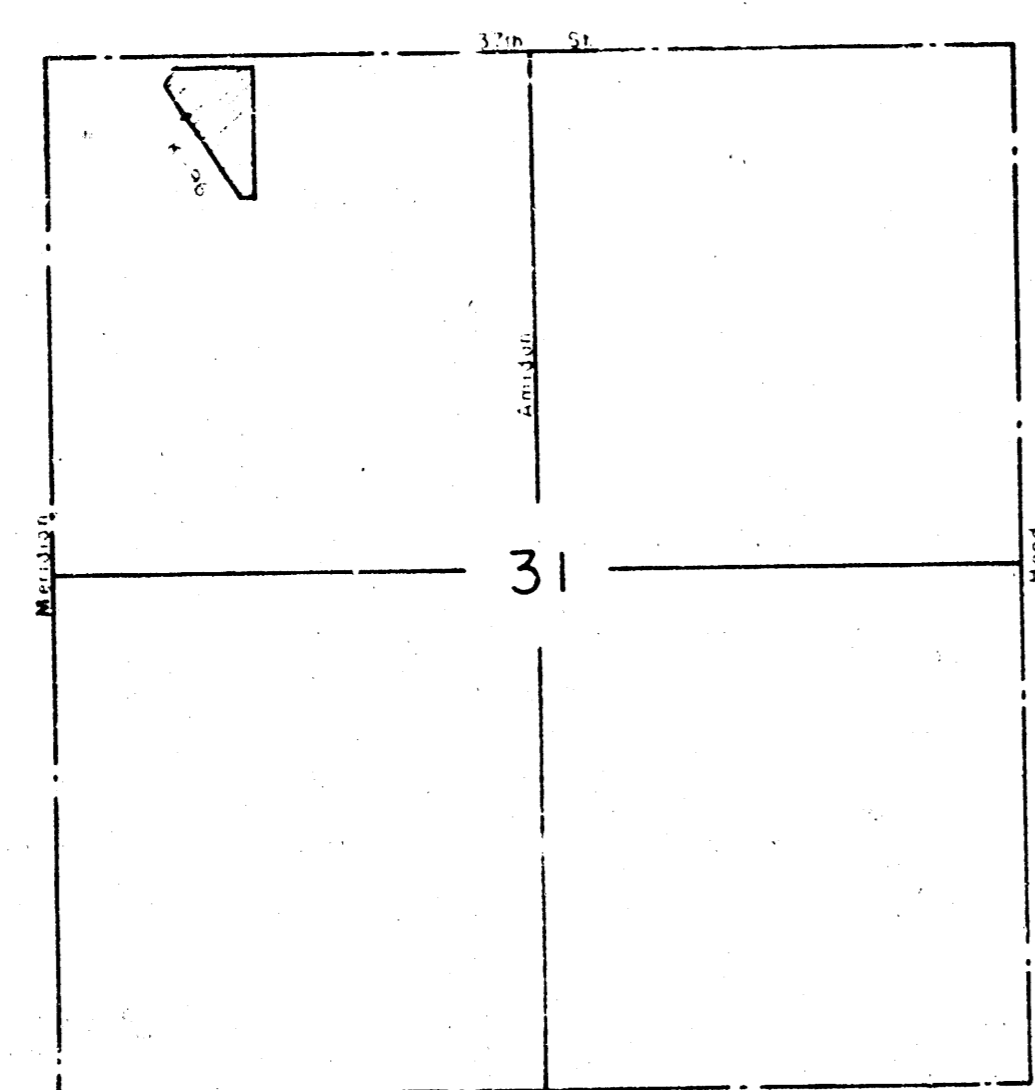


JOHN MICHENER ADDITION
(drainage)



NW Cor. Cont. Lot 1
(NW cor. NW 1/4 Sec 31-26-1E)



VICINITY MAP
1" = 1000'



DRAIN LOT TO DITCH AS SHOWN BY ARROWS.

DRAINAGE PLAN PRELIMINARY PLAT JOHN MICHENER ADDITION

FOR SCHOOL DIST. 128
428 S. BROADWAY
WICHITA, KANSAS 67202

B.M. - ELEV. 137.69 CITY DATUM -
R.R. SPIKE IN LIGHT POLE, 250' EAST
AND 22' NORTH OF THE SW COR.,
SEC. 30-26-1E.

TOPO MADE FEBRUARY 13, 1987.

LOWELL D. HIGH, L.S.
1542 S. ST. FRANCIS
FEBRUARY 13, 1987