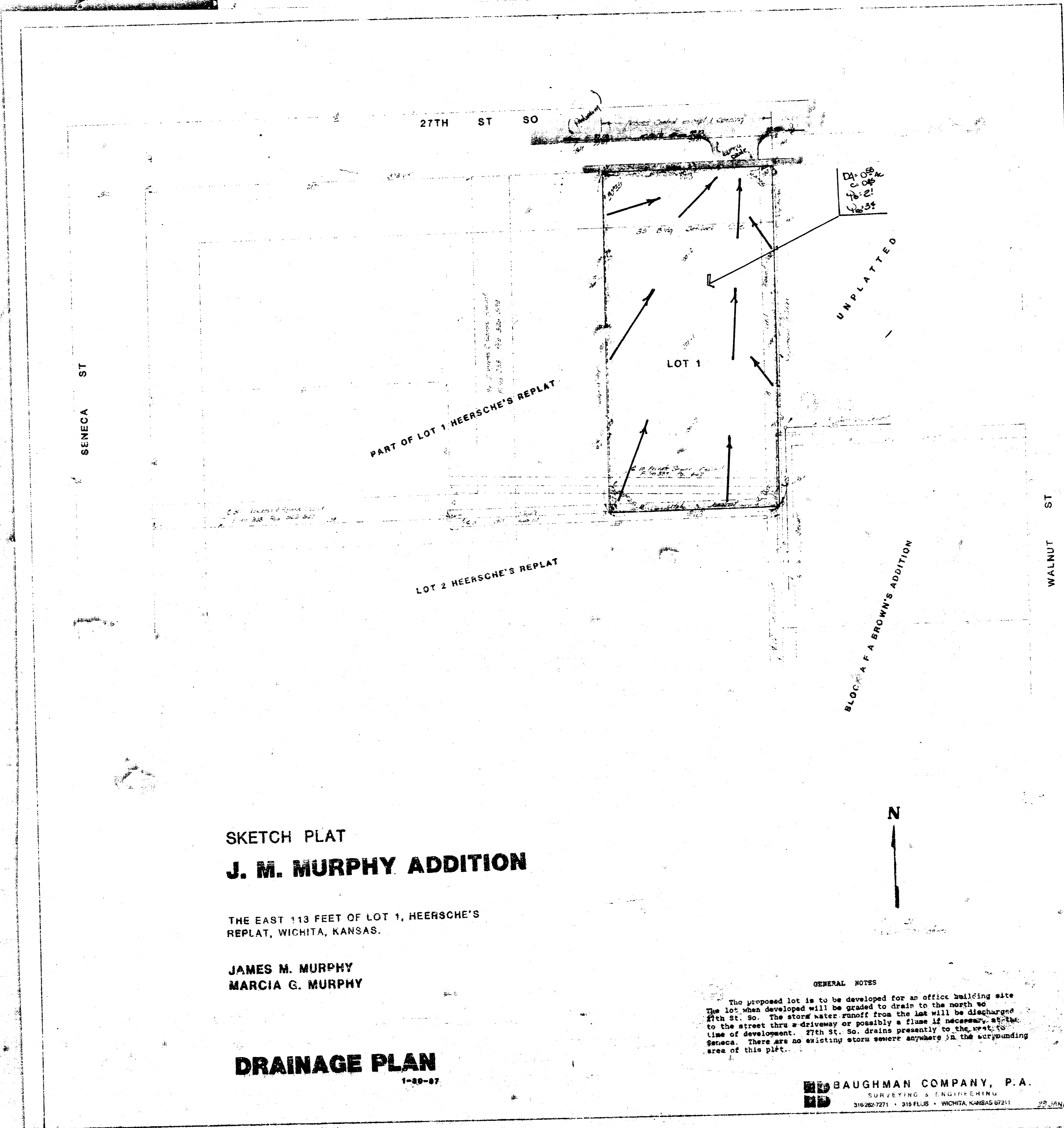


J.M. MURPHY ADDITION
(Drainage)



SKETCH PLAT
J. M. MURPHY ADDITION

THE EAST 113 FEET OF LOT 1, HEERSCH'S
REPLAT, WICHITA, KANSAS.

JAMES M. MURPHY
MARCIA G. MURPHY

DRAINAGE PLAN
1-29-87

GENERAL NOTES
The proposed lot is to be developed for an office building site. The lot, when developed will be graded to drain to the north to 27th St. So. The storm water runoff from the lot will be discharged to the street thru a driveway or possibly a flume if necessary, at the time of development. 27th St. So. drains presently to the west to Seneca. There are no existing storm sewers anywhere in the surrounding area of this plat.

BAUGHMAN COMPANY, P.A.
SURVEYING & ENGINEERING
316 262-7271 • 316 262-7271 • WICHITA, KANSAS 67211 22 JAN 87