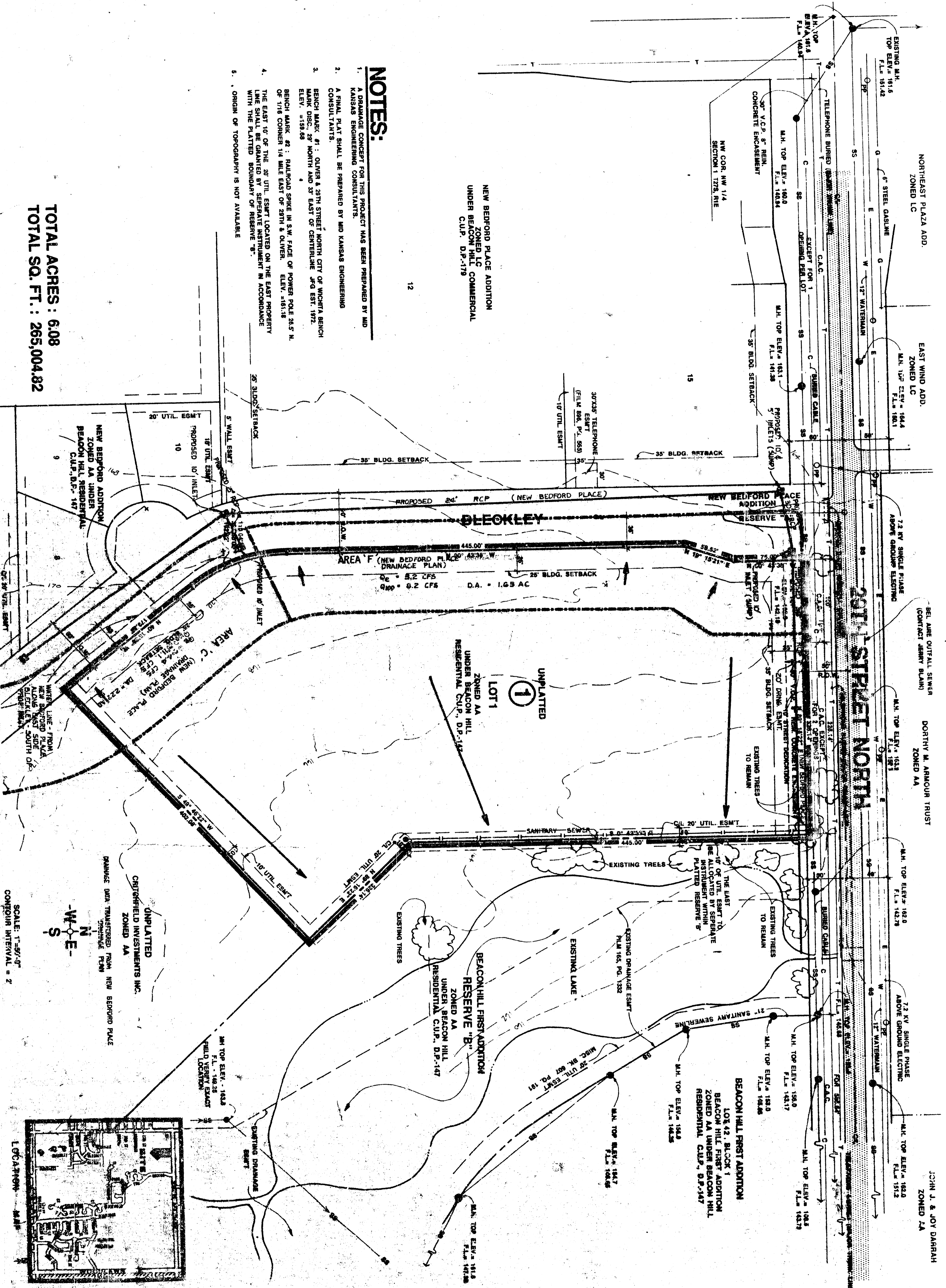


- NOTES:**
1. A PRELIMINARY CONCEPT FOR THIS PROJECT HAS BEEN PREPARED BY AND KANSAS ENGINEERING CONSULTANTS.
  2. A FINAL PLAN SHALL BE PREPARED BY AND KANSAS ENGINEERING CONSULTANTS.
  3. BENCH MARK #1: OLIVER & 23RD STREET NORTH CITY OF WICHITA BENCH MARK DISC. 28 NORTH AND 27 EAST OF CENTERLINE JFG EST. 1972. ELEV. = 139.69
  4. BENCH MARK #2: RAILROAD SPRING IN S.W. FACE OF POWER POLE 203.5 W. OF 1716 CORNER 1/4 BLOCK EAST OF 23RD & OLIVER. ELEV. = 139.11
  5. THE EAST 1/2 OF THE 27' UTIL. EASMT LOCATED ON THE EAST PROPERTY WITH THE PLATTED 'RESERVE' IN ACROSSHATCH WITH THE PLATTED 'RESERVE' IS NOT AVAILABLE
  6. ORIGIN OF TOPOGRAPHY IS NOT AVAILABLE

TOTAL ACRES : 6.08  
TOTAL SQ. FT. : 265,004.82



UTILITY and DRAINAGE PLAN  
**NEW LIFE ADDITION**

OWNER: CRITCHFIELD, INC. 2825 S. BEACON HILL CT. WICHITA, KANSAS 67220 (316) 862-8002 UNDER BEACON HILL CUP D.P. -147

*See file*

7