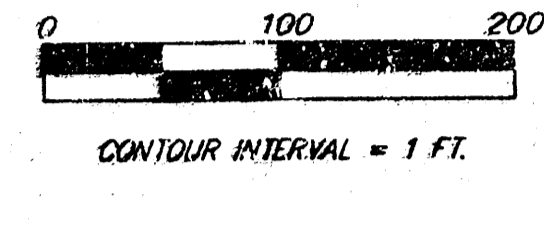
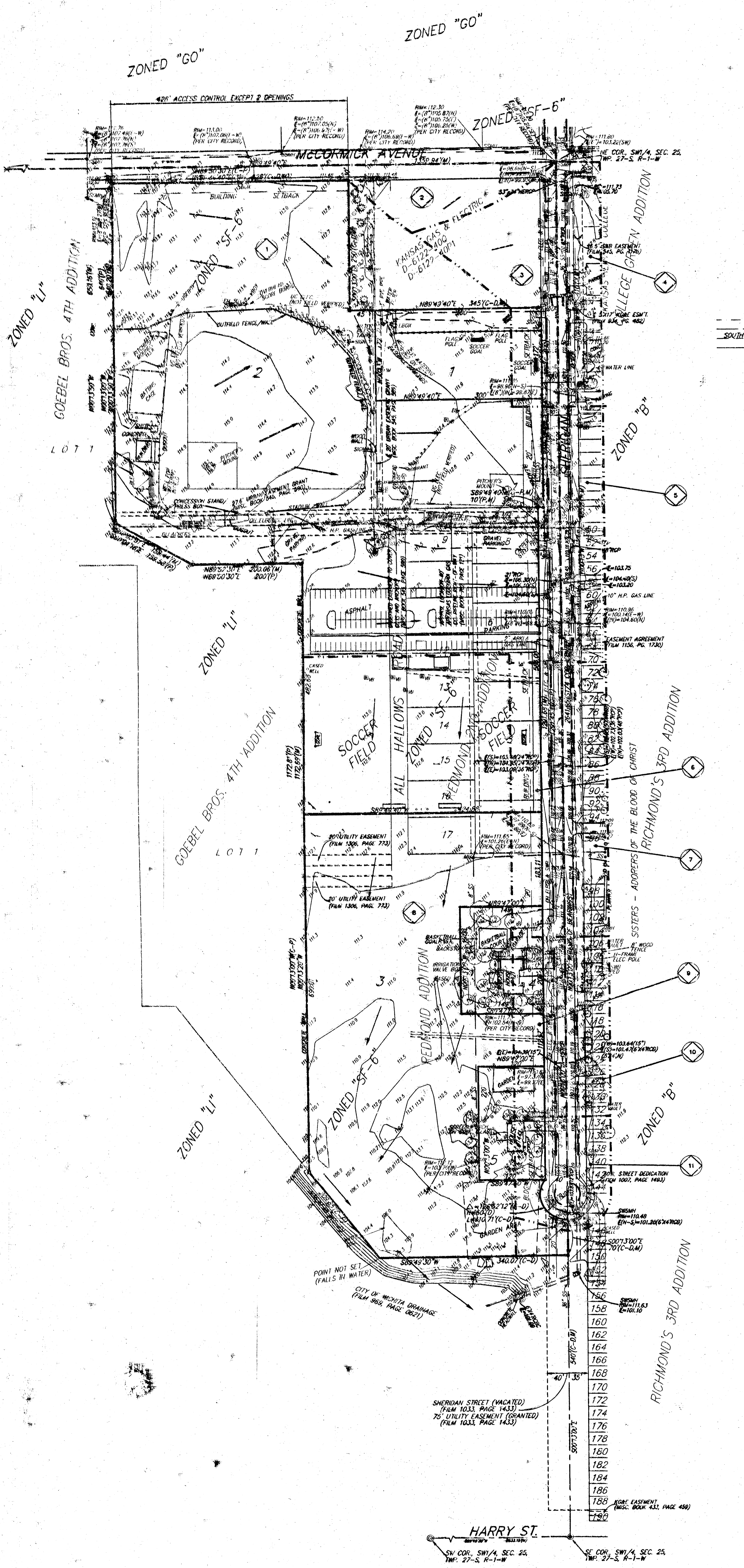


# DRAINAGE CONCEPT NEWMAN UNIVERSITY ADDITION

WICHITA, SEDGWICK COUNTY, KANSAS



--- ELECTRIC  
--- NATURAL GAS  
--- SOUTHWESTERN BELL TELEPHONE  
--- WATER

- (M) = MEASURED
- (P) = PLATED
- (D) = DESCRIBED
- (C-D) = CALCULATED PER DESCRIBED INFO
- (C-P) = CALCULATED PER PLATED INFO

- = #4 REBAR W/ "BAUGHMAN" CAP (SET)
- = CONC. NAIL ON MANHOLE LID (FOUND)
- = 3/4" IRON W/ TRIMBLE (FOUND)
- = 1/4" IRON (FOUND)
- × = CROSS (FOUND)
- = #4 REBAR W/ "BAUGHMAN" CAP (FOUND)

- ⊙ = POWER POLE
- ⊞ = HIGH LINE POLE
- ⊞ = WATER VALVE BOX
- ⊞ = TOLL POLE
- ⊞ = REFLECTOR POST
- ⊞ = ELECTRIC METER
- ⊞ = SWITCH BOX
- ⊞ = POLE W/ ELEC. METER
- ⊞ = FIRE HYDRANT
- ⊞ = MAIL BOX
- ⊞ = SPRINKLER HEAD
- ⊞ = WATER SPOUT
- ⊞ = PINE TREE
- ⊞ = TREE
- ⊞ = BUSH
- ⊞ = EVERGREEN TREE
- ⊞ = GAS METER
- ⊞ = GAS REGULATOR
- ⊞ = SANITARY SEWER MANHOLE
- ⊞ = SOUTHWESTERN BELL PEDESTAL
- ⊞ = WATER METER
- ⊞ = DUTY ANCHOR
- ⊞ = LIGHT POLE
- ⊞ = UNDERGROUND ELECTRIC BOX
- ⊞ = ELECTRIC BOX
- ⊞ = HOME BOX
- ⊞ = SOUTHWESTERN BELL BOX
- ⊞ = BENCHMARK DISC

BENCHMARK:  
CITY OF WICHITA BRASS DISC,  
TOP OF CURB @ SE CORNER OF  
SHERIDAN & MCCORMICK.  
ELEV. = 111.46 CITY DATUM

NOTE:  
SOME PRIVATE ELECTRICAL SYSTEMS AND  
SPRINKLER SYSTEMS ARE NOT FIELD LOCATED.

Drainage Area	Area	C <sub>1</sub>	C <sub>2</sub>	C <sub>3</sub>	C <sub>4</sub>	C <sub>5</sub>	C <sub>6</sub>	C <sub>7</sub>	C <sub>8</sub>	C <sub>9</sub>	C <sub>10</sub>	C <sub>11</sub>
1	13.6	0.45	0.45	15	3.83	7.37	23.4	45.0				
2	1.0	0.80	0.80	15	3.83	7.36	3.1	5.6				
3	1.3	0.80	0.80	15	3.83	7.36	4.0	7.7				
4	0.8	0.80	0.80	15	3.83	7.36	2.1	4.0				
5	0.8	0.80	0.80	15	3.83	7.36	2.1	4.0				
6	1.1	0.80	0.80	15	3.83	7.36	2.5	4.5				
7	0.8	0.80	0.80	15	3.83	7.36	2.1	4.0				
8	8.5	0.45	0.45	15	3.83	7.36	16.5	31.8				
9	0.8	0.80	0.80	15	3.83	7.36	1.8	3.5				
10	0.8	0.80	0.80	15	3.83	7.36	1.4	2.6				
11	0.8	0.80	0.80	15	3.83	7.36	1.8	3.5				

