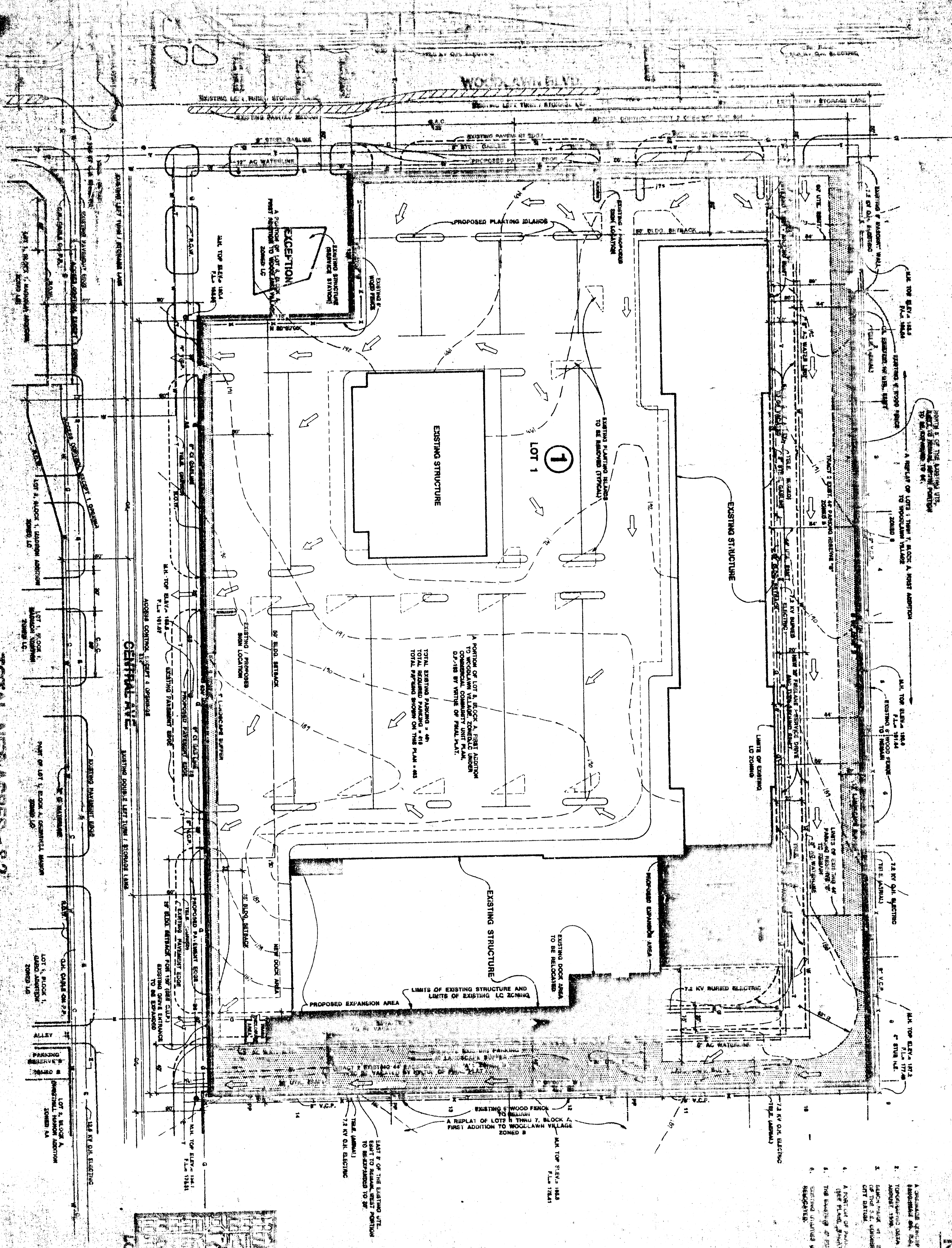


PRELIMINARY PLAN
NORMANDIE CENTER
 ZONING UNDER COMMERCIAL COMMUNITY UNIT PLAN D.P. 182

TOTAL NET ACRES = 8.2
 TOTAL SQ. FT. = 355,631



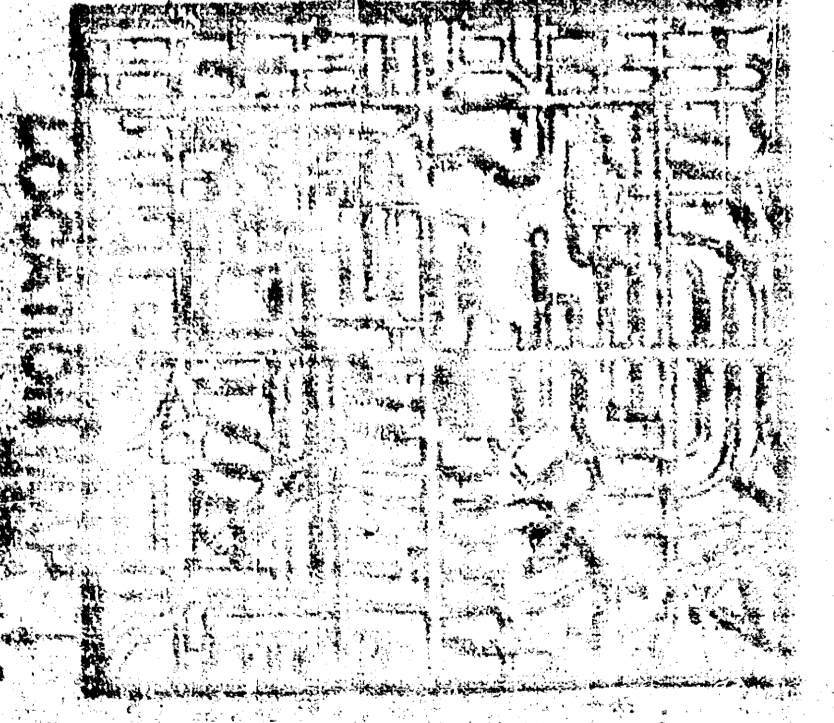
NOTE: SITE SHALL DRAIN TO CENTRAL STREET
 RW AT DRIVEWAYS AND FLUME.

DRAINAGE CONCEPT

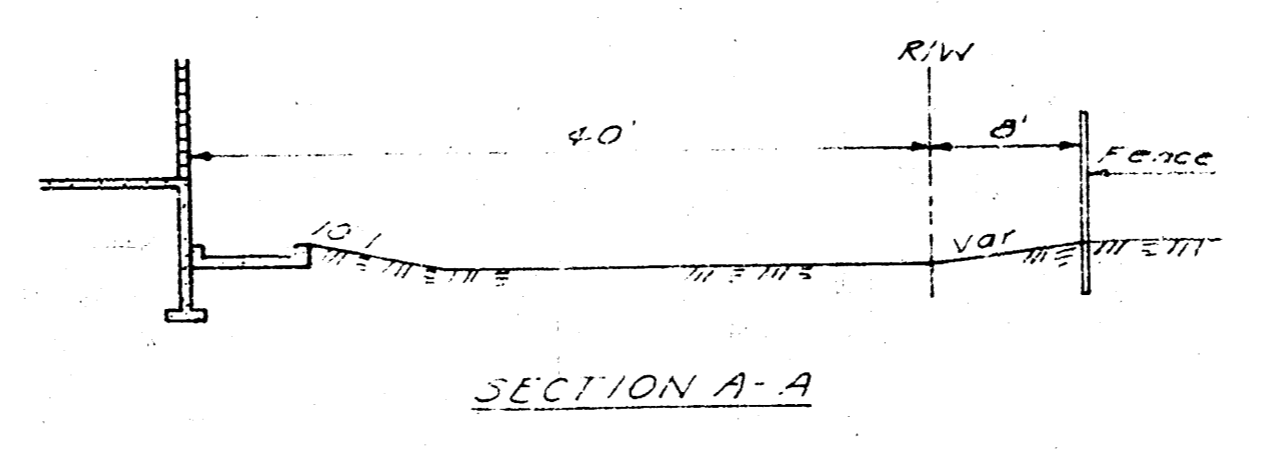
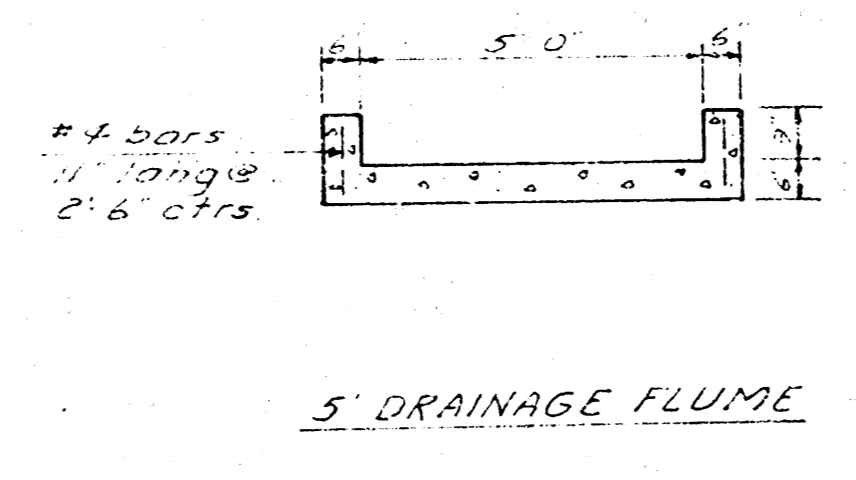
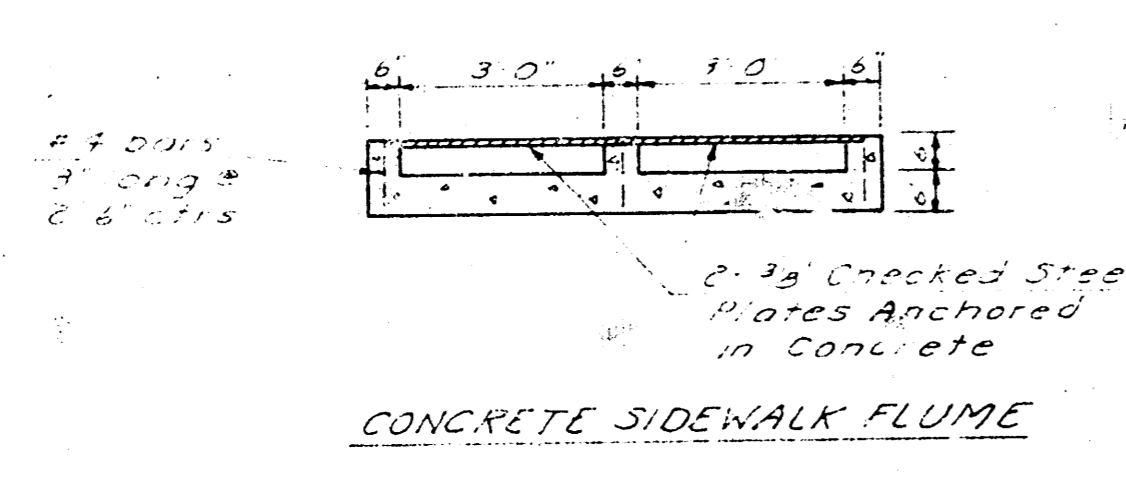
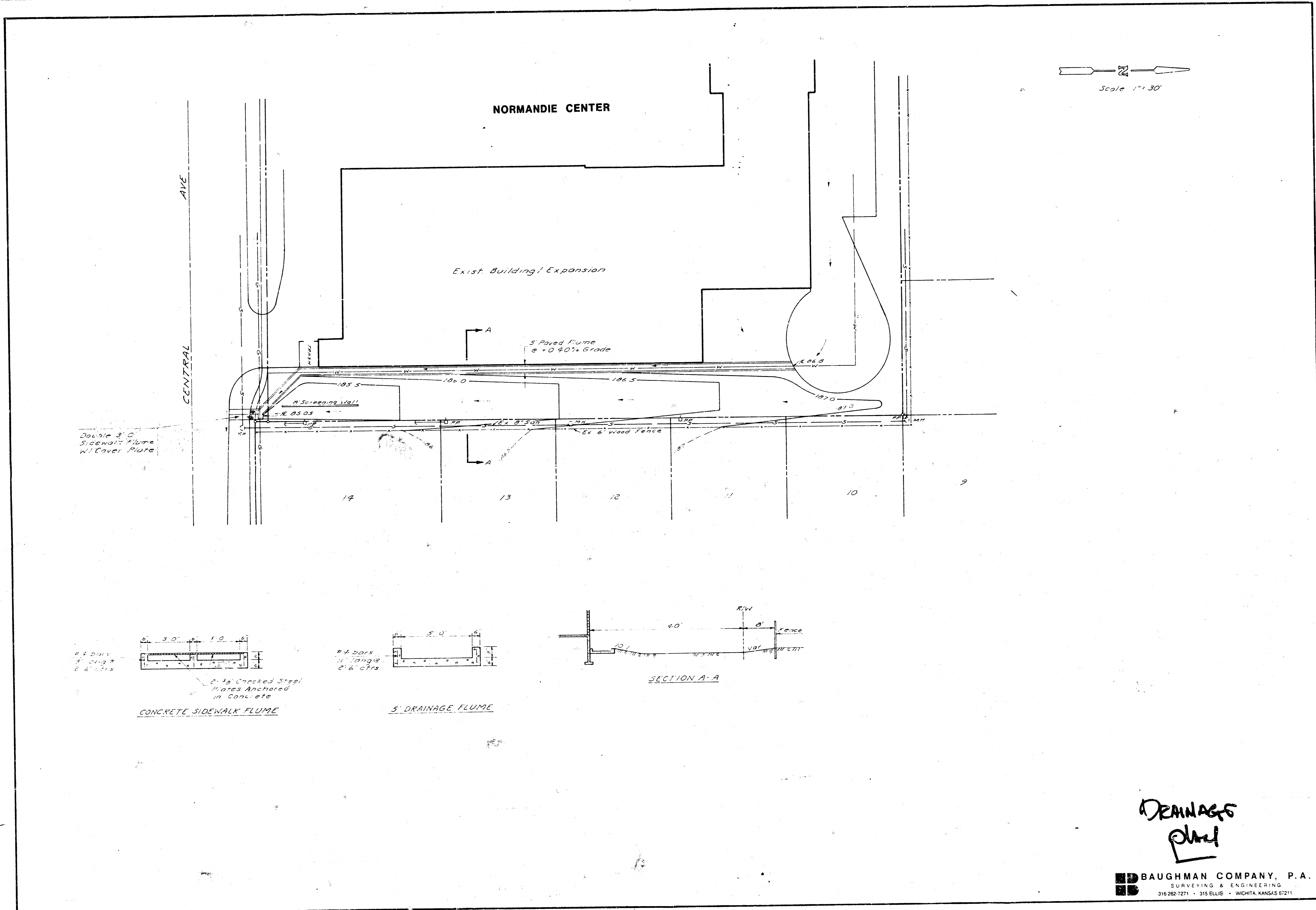
8-11-88

NOTES

1. A DRAINAGE CONCEPT FOR THE PROPOSED AND EXISTING STRUCTURES IS SHOWN ON THIS PLAN.
2. DRAINAGE DATA HAS BEEN OBTAINED FROM THE CITY OF CHICAGO AND IS SUBJECT TO CHANGE.
3. EXISTING AND PROPOSED DRAINAGE SYSTEMS ARE SHOWN ON THIS PLAN.
4. A PORTION OF LOT 1, BLOCK A, FIRST ADDITION COMMERCIAL COMMUNITY UNIT PLAN D.P. 182 IS BEING REPLATED BY THE CITY OF CHICAGO.
5. THE DRAINAGE OF EXISTING AND PROPOSED STRUCTURES IS SHOWN ON THIS PLAN.
6. EXISTING UTILITIES (WATER, SEWER, GAS, ETC.) ARE SHOWN ON THIS PLAN.



Normandie Center



DRAINAGE
Plan

BAUGHMAN COMPANY, P.A.
SURVEYING & ENGINEERING
316-262-7271 • 315 ELLIS • WICHITA, KANSAS 67211