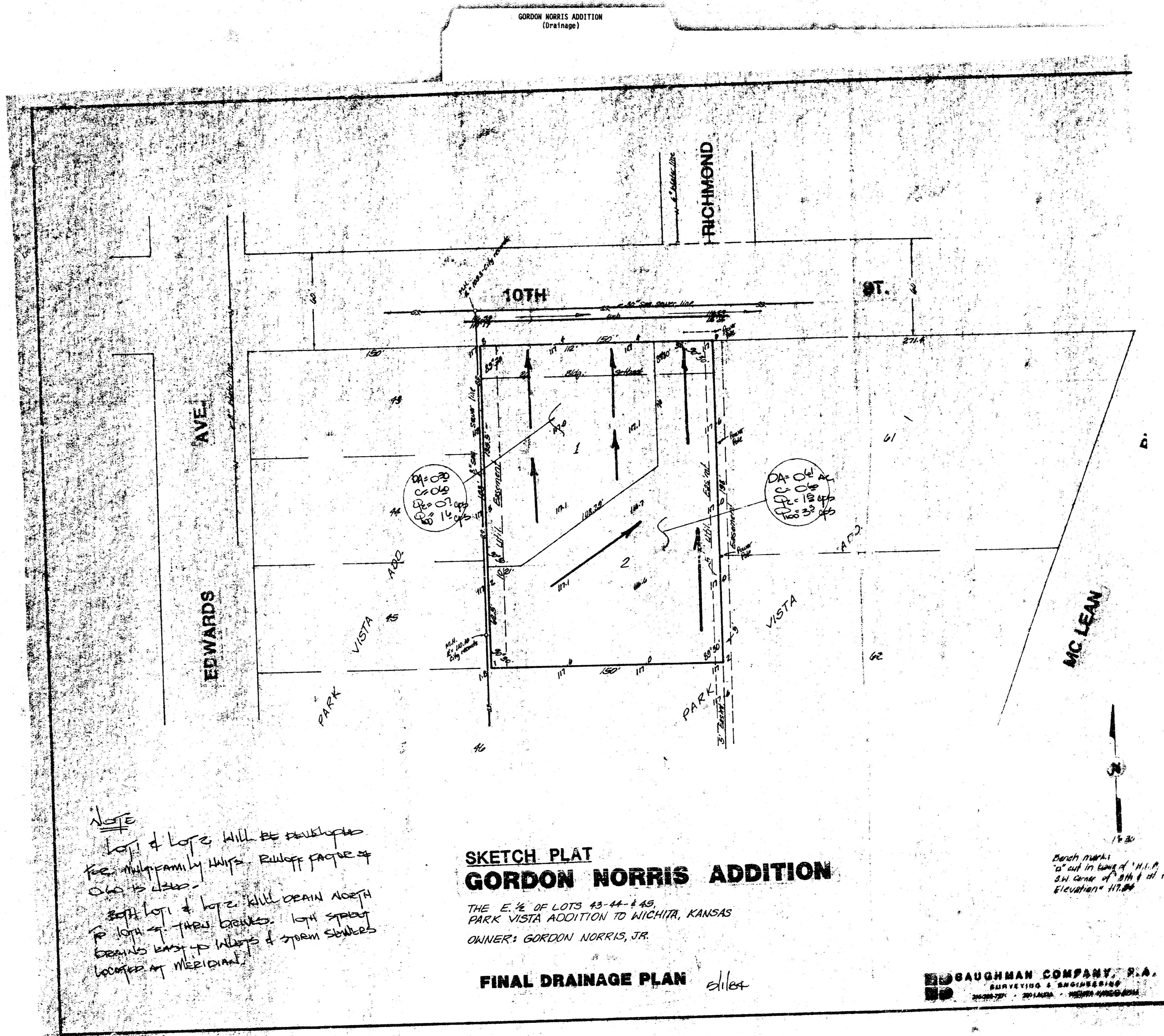


GORDON NORRIS ADDITION
(Drainage)



NOTE
 Lots 1 & 2 will be developed
 for multifamily units. Runoff from
 lots to lots.
 Both lots & lots will drain north
 to lots at their breaks. 10th street
 drains east to manholes & storm sewers
 located at Meridian.

SKETCH PLAT
GORDON NORRIS ADDITION

THE E. 1/2 OF LOTS 43-44 & 45,
 PARK VISTA ADDITION TO WICHITA, KANSAS
 OWNER: GORDON NORRIS, JR.

FINAL DRAINAGE PLAN *elias*

Each mark
 1" out in line of "H.P.
 3/4" center of 3/4" of
 Elevation = 117.00

GAUGHMAN COMPANY, P.A.
 SURVEYING & ENGINEERING
 2010 W. 10th St. - WICHITA, KANSAS 67202