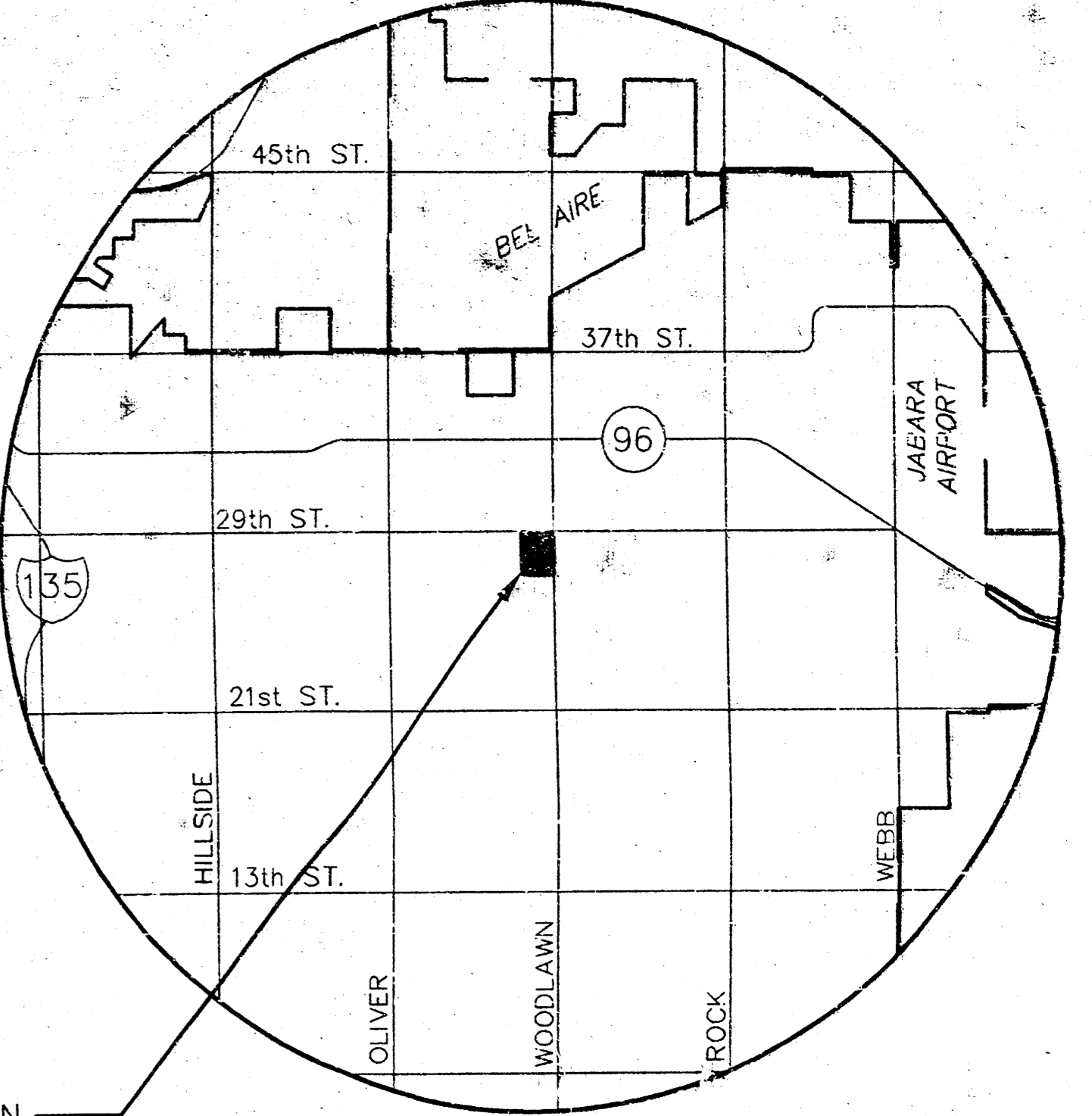
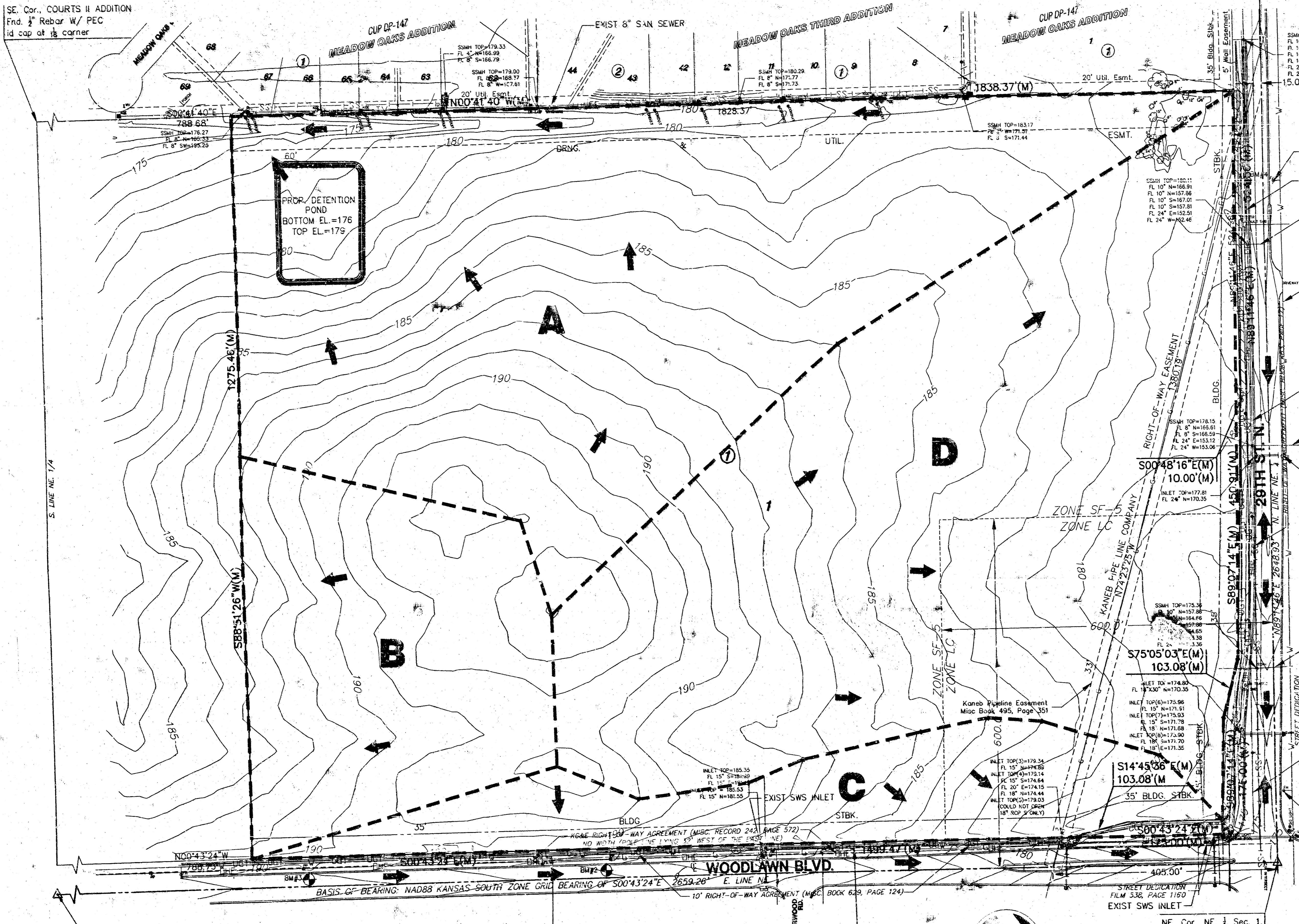


SE. Cor., COURTS II ADDITION  
End. 1" Rebar W/ PEC  
lid cap at 16 corner

NW. Cor., NE. 1, Sec. 1,  
T27S, R1W, 6th P.M.



VICINITY MAP

LEGEND

- GAS METER
- GROUND YARD LIGHT
- YARD LIGHT ON POLE
- ELECTRIC MANHOLE
- SIGNAL LIGHT
- CONIFEROUS TREE & DIAMETER
- DECIDUOUS TREE & DIAMETER
- SIGN
- POWER POLE AND GUY ANCHOR
- ELECTRIC BOX
- SEWER CLEAN-OUT
- EDGE OF TREES
- FENCE
- BENCHMARK
- STORM WATER MANHOLE
- SANITARY SEWER MANHOLE
- TELEPHONE MANHOLE
- SECTION CORNER
- 5/8" REBAR/W/EC  
CLS #39 SET
- PROPERTY CORNER FOUND
- POLE - POLE
- GATE
- TRAFFIC SIGNAL MANHOLE
- SPRINKLER HEAD
- WALL
- LIGHT POLE
- FIRE HYDRANT
- WATER VALVE
- WATER METER
- IRRIGATION CONTROL VALVE
- GRATE INLET
- TELEPHONE RISER
- INLET
- STORM SEWER PIPE
- WATER LINE
- SANITARY SEWER LINE
- GAS LINE
- TELEPHONE LINE
- UNDERGROUND ELECTRIC LINE
- OVERHEAD TELEPHONE
- OVERHEAD ELECTRIC
- UNDERGROUND FIBER OPTIC

BENCHMARKS

- BM# - BM - City Disk NE corner of hub guard on RCBC on 29th Street 100' E and 75' N of the CL of 29th and Woodlawn. Elev. = 172.41
- BM#1 - RR spike in NE face PP at the SW Corner for 29th Street and Woodlawn. Elev. = 177.34
- BM#2 - RR Spike in W face of 5th PP S of 29th Street, W side of Woodlawn. Elev. = 188.45
- BM#3 - RR Spike in W face of 7th PP S of 29th Street, W side of Woodlawn. Elev. = 190.70
- BM#4 - RR spike in S face of 6th PP W of Woodlawn, S side of 29th Street. Elev. = 180.88

NOTES

1. EXISTING AND PROPOSED ZONING: LIMITED COMMERCIAL "LC" AND SINGLE FAMILY "SF-5"
2. LOT MINIMUM PADS AS INDICATED ON DRAINAGE PLAN, PROVIDED AT THE TIME OF FINAL PLATTING.
3. RESERVES: None

# DRAINAGE AND UTILITY PLAN

# NORTHEAST ELEMENTARY SCHOOL ADDITION

OWNERS/DEVELOPER: Unified School District #259 201 N. Water Street, Wichita, KS 67202 316-973-4000

DATE: JULY, 2002



**MKEC**  
ENGINEERING  
CONSULTANTS  
411 N. WEST ROAD  
WICHITA, KS 67204  
316-264-2800

S:\VTL\01160\Draw\Prop\01160.dwg F:\JUL 05 07:35:22 2002