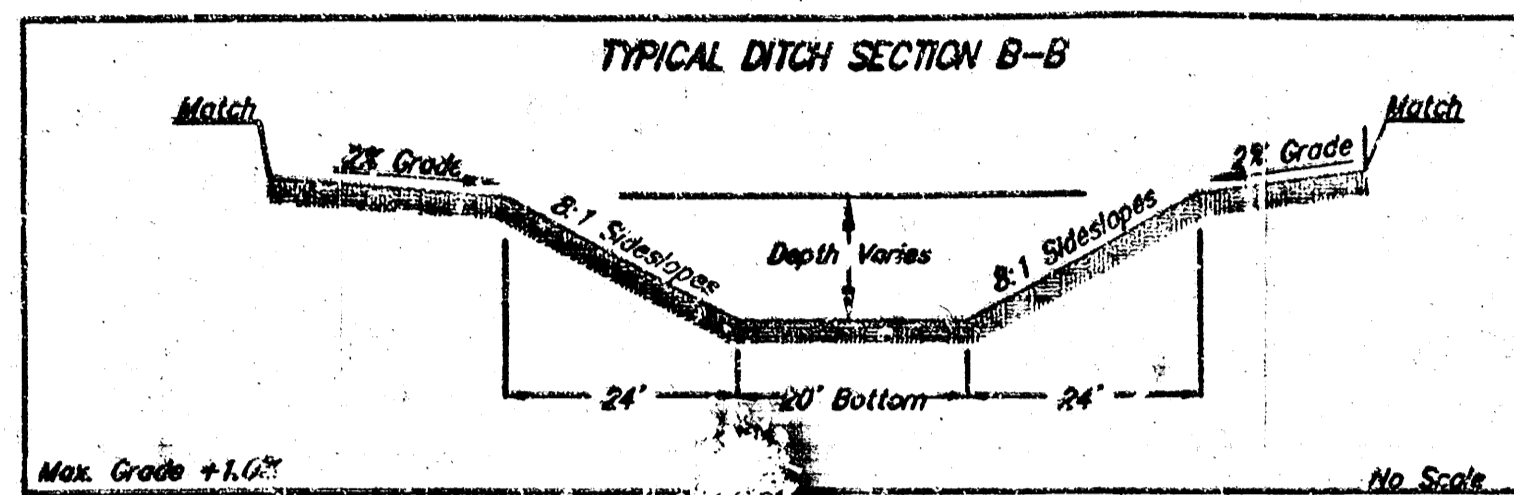
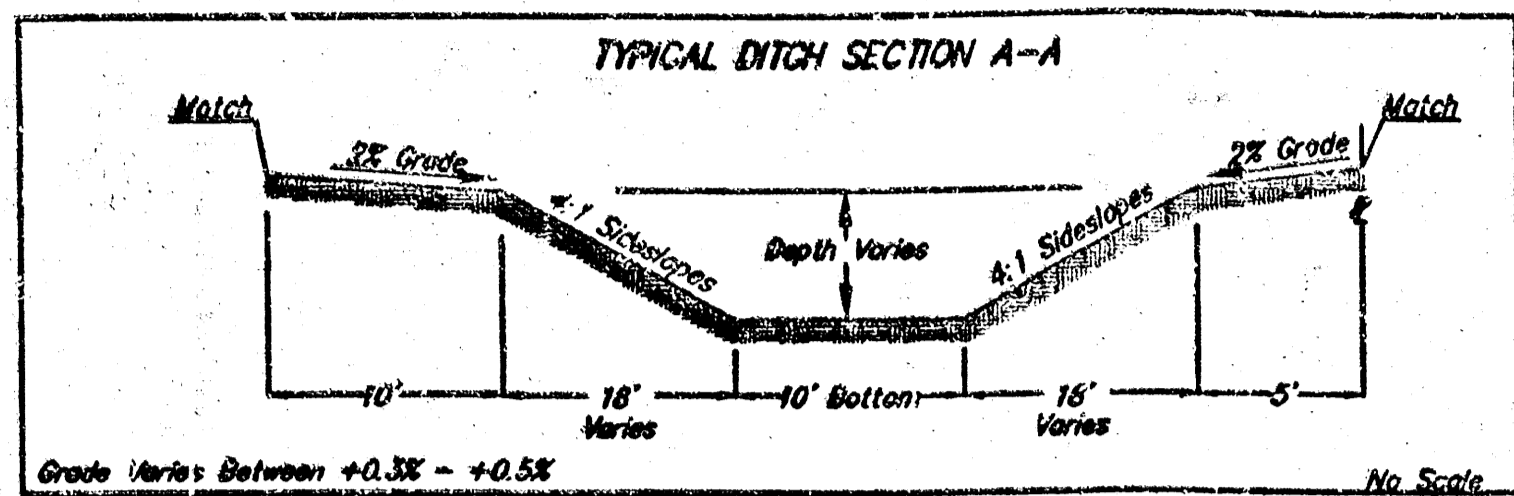


DRAINAGE PLAN

NORTHEAST MIDDLE SCHOOL ADDITION

WICHITA, SEDGWICK COUNTY, KANSAS



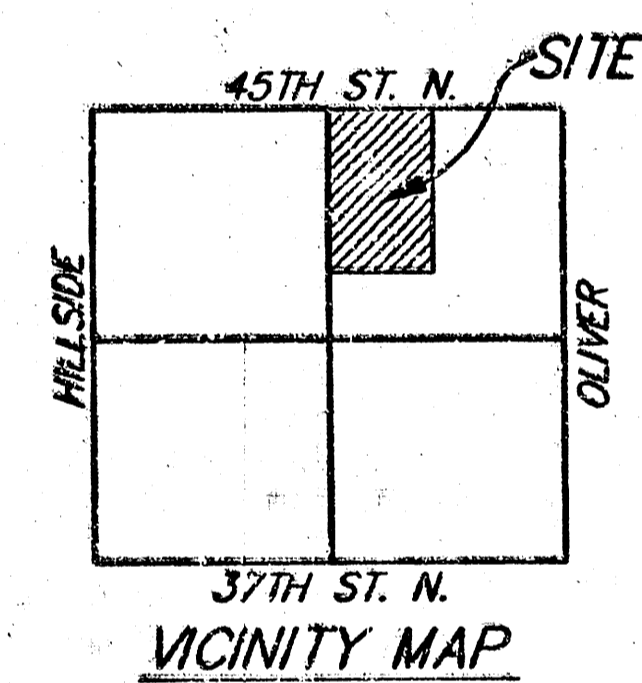
Basin Lot	Area acres	Tc min	Runoff Coefficient				Peak Flowrate				
			2-yr	5-yr	100-yr	2-yr	5-yr	100-yr	2-yr	5-yr	100-yr
1	3.4	15	0.39	0.41	0.57	3.1	2.4	14			
2	25	15	0.87	0.89	0.89	0.8	1.0	1.7			
3	1.8	15	0.87	0.87	0.89	0.6	0.7	1.2			
4	.80	15	0.84	0.85	0.91	2.6	3.1	5.9			
5	32.4	15	0.49	0.51	0.66	74	82	192			
6	5.3	15	0.39	0.41	0.57	7.8	9.9	22			
7	1.9	15	0.87	0.89	0.90	6.3	7.6	13			

DRAINAGE NOTES:

- The Existing Soil Type per Soil Survey of Sedgewick County, Kansas is Table S19 Clay Loam, Partum Loam, Blanket Sil Loam, Residual City Clay, and Mazon Loam. The Hydrologic Group For Each Soil Type in Their Respective Order is D, B, C, & B.
- A Portion of This Parcel of Land is Zoned in a ZONE A Per FEMA FIRM Map. Community/Panel Number: 200321 0150A, Effective Date: June 3, 1996.
- An Off-site Drainage Agreement with Land Owner West of Plot Shall be Obtained.

MINIMUM BUILDING PAD ELEVATIONS FOR LOWEST OPENING TO THE STRUCTURES

LOTS	BLOCK	ELEVATION CITY DATUM 1982.0
1	A	



Offsite Drainage, NW of SW Property Cor.
 D.A. = 34.2 ac
 Tc = 29 min.
 Q₂ = 80 cfs
 Q₅ = 29 cfs
 Q₁₀₀ = 44 cfs
 Q_{max} = 32 cfs

Existing Conditions
 D.A. = 440 ac
 Q₂ = 266 cfs
 Q₅ = 433 cfs
 Q₁₀₀ = 847 cfs
 Q_{max} = 262 cfs
 Q₂ = 432 cfs
 Q₅ = 341 cfs

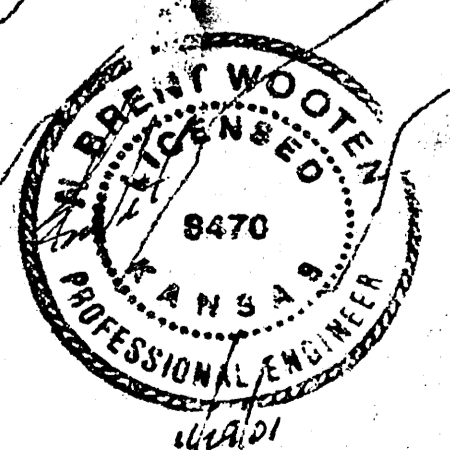
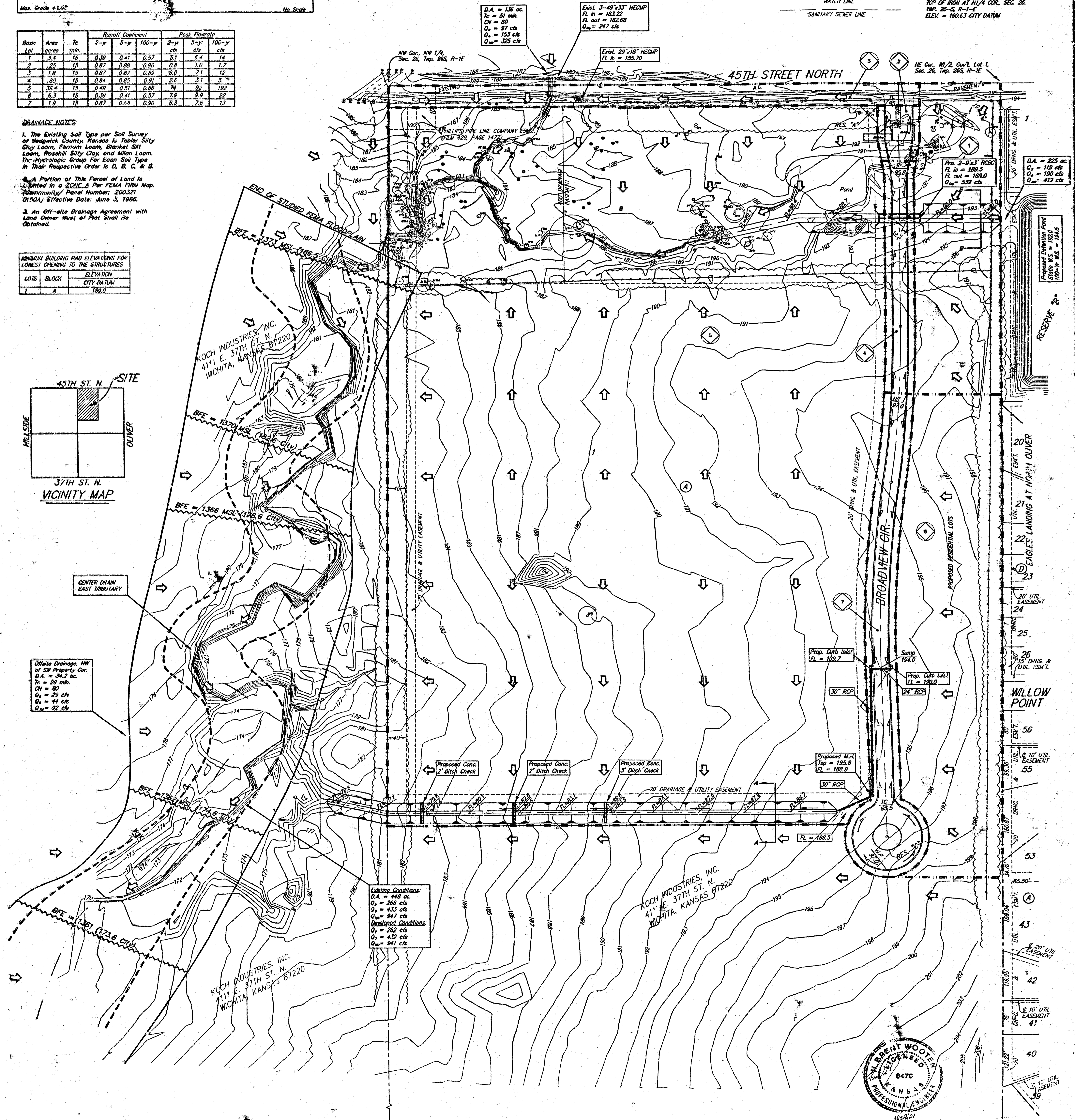
- P = Pine Tree
- PM = Pipeline Marker
- PP = Power Pole
- Sign = Sign
- TP = Telephone Pole
- = Deciduous Tree

- ELECTRIC LINE
- SOUTHWESTERN BELL LINE
- CABLEVISION LINE
- WATER LINE
- SANITARY SEWER LINE

DATE OF PREPARATION: 20 NOV 2001
 DATE OF TOPOGRAPHY: 16 NOV 2001
 QUANTITY INTERVALS = 1 FOOT

• = #4 REBAR W/ "BAUGHMAN" CAP (SET)

BENCHMARK:
 10" OF IRON AT NW 1/4 COR. SEC. 26, TWP. 26-S, R-1-E
 ELEV. = 180.63 CITY DATUM



26 NOV 2001
BAUGHMAN COMPANY P.A.
 ENGINEERING, SURVEYING, & PLANNING
 318-292-7271 • 318 ELLIS • WICHITA, KANSAS 67201
 71 WINDMILL RD. #211 WINDMILL LANE, WICHITA, KS 67201