

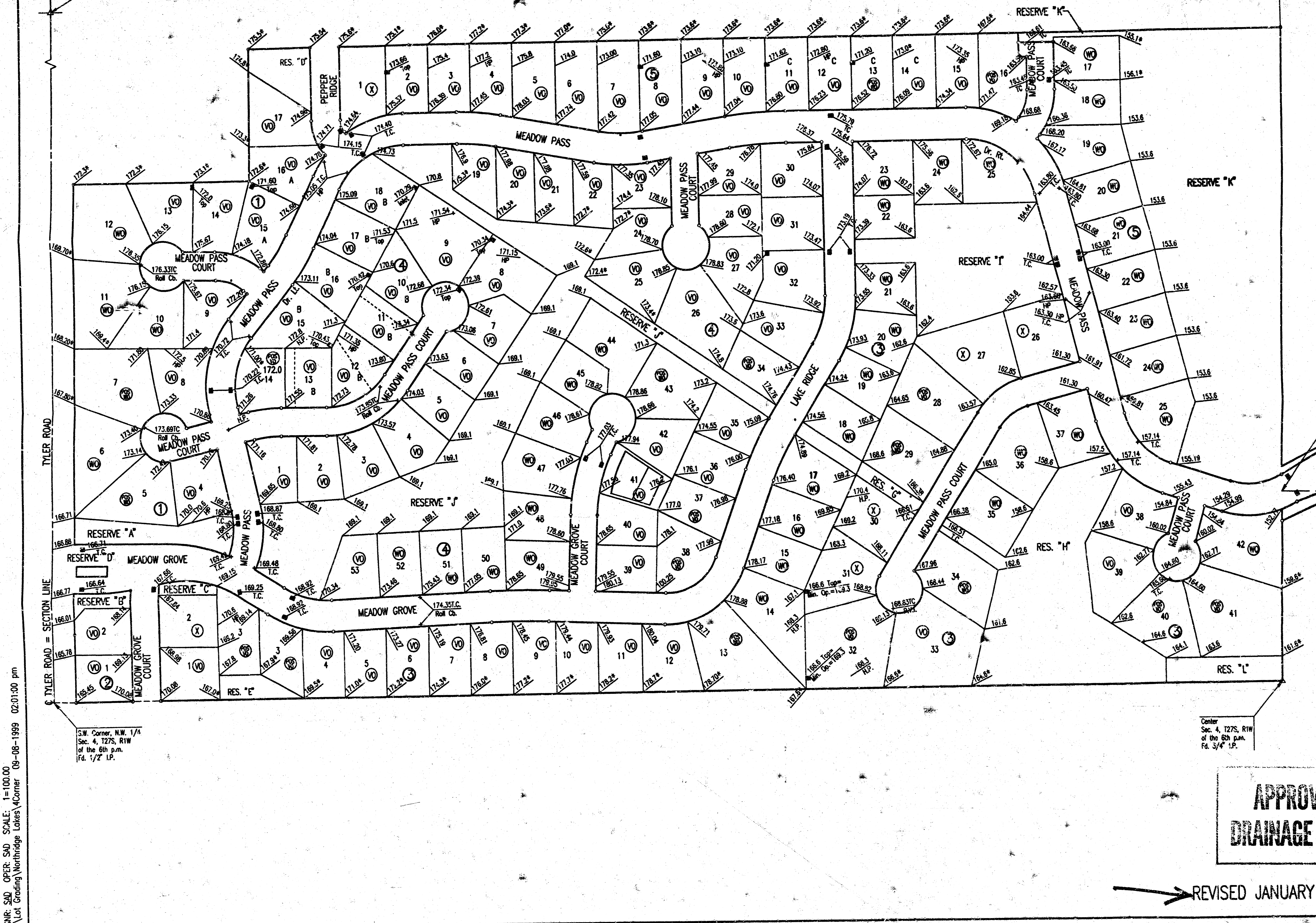
# NORTHRIDGE LAKES

AN ADDITION TO WICHITA, SEDGWICK COUNTY, KANSAS

N.E. Corner N.W. 1/4  
Sec. 4, T27S, R1W  
of the 6th p.m.  
Fd. 1/2" I.P.

N.W. Corner  
Sec. 4, T27S, R1W  
of the 6th p.m.  
Fd. 1" I.P.

SCALE: 1"=100'  
= IRON SET  
BSL = BUILDING SETBACK LINE  
CAC = COMPLETE ACCESS CONTROL



B.M. - CITY OF WICHITA BENCH MARK DISC. 36 FEET WEST AND 90 FEET SOUTH OF THE INTERSECTION OF THE CENTERLINES OF TYLER ROAD AND 21ST STREET NORTH.  
ELEV. 1357.349 M.S.L. = 169.949 CITY DATUM

B.M. - RAILROAD SPIKE IN SOUTHWEST SIDE OF POWER POLE LOCATED 75' NORTH AND 50' EAST OF THE INTERSECTION OF THE CENTERLINES OF RIDGE ROAD AND 21ST STREET NORTH.  
ELEV. 1330.70 M.S.L. = 143.30 CITY DATUM

MINIMUM PAD ELEVATION (LOWEST OPENING) AS FOLLOWS:

BLOCK 3  
LOTS 20 THROUGH 27 ELEV. = 1349.5 M.S.L. = 162.1 CITY DATUM  
LOTS 33, 34, 39, AND 40 ELEV. = 1350.5 M.S.L. = 163.1 CITY DATUM  
LOTS 35 THROUGH 38 ELEV. = 1344.8 M.S.L. = 157.2 CITY DATUM

BLOCK 4  
LOTS 1 THROUGH 9 ELEV. = 1357.0 M.S.L. = 169.8 CITY DATUM  
LOTS 19 THROUGH 25 ELEV. = 1357.0 M.S.L. = 169.8 CITY DATUM  
LOTS 44 THROUGH 48 ELEV. = 1357.0 M.S.L. = 169.8 CITY DATUM  
LOTS 50 THROUGH 53 ELEV. = 1357.0 M.S.L. = 169.8 CITY DATUM

BLOCK 5  
LOTS 17 THROUGH 25 ELEV. = 1338.4 M.S.L. = 151.0 CITY DATUM

ELEVATIONS SHOWN ON FACE OF PLAT ARE IN CITY OF WICHITA DATUM

N.W. Corner Reserve "I"  
Reflection Ridge 7th Addition  
Most Northernly Point  
Lot 1, Block 5, Reflection  
Ridge 7th Addition  
Most Easterly Point  
Lot 1, Block 5, Reflection  
Ridge 7th Addition  
Most Southernly Corner  
Lot 1, Block 5, Reflection  
Ridge 7th Addition

**LEGEND**

- H.P. HIGH POINT
- \* MATCH EXISTING
- T.C. TOP OF CURB ELEVATION
- ⊙ VIEW OUT BASEMENT LOT
- ⊙ POSSIBLE VIEW OUT BASEMENT LOT
- ⊙ NO VIEW OUT BASEMENT LOT
- ⊙ WALK OUT BASEMENT LOT
- ⊙ POSSIBLE WALK OUT BASEMENT LOT
- A MINIMUM OPENING FOR VIEW OUT OR WALK OUT BASEMENT = 173.6
- B MINIMUM OPENING FOR VIEW OUT OR WALK OUT BASEMENT = 172.5
- C MINIMUM OPENING FOR VIEW OUT OR WALK OUT BASEMENT = 174.35

**APPROVED  
DRAINAGE PLAN**

REVISED JANUARY 2000

**NORTHRIDGE LAKES**

DSR: SLD OPER. SLD SCALE: 1"=100.00  
C: Lot Grading/Northridge Lakes 4/08-1999 02:01:00 pm