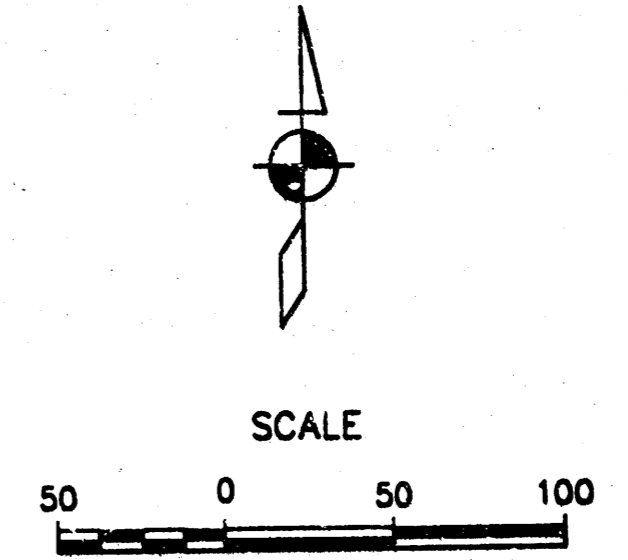


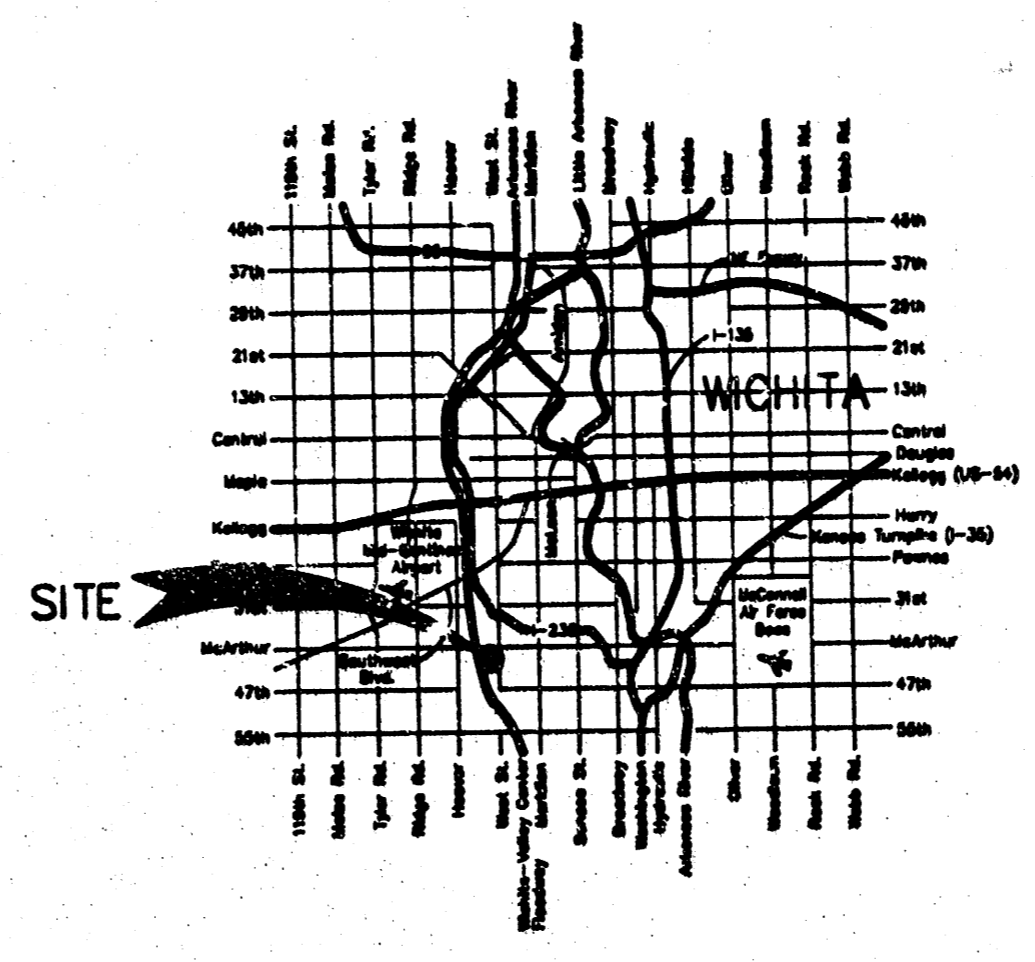
PARKER OIL ADDITION DRAINAGE PLAN SEDGWICK COUNTY, KANSAS



Area #	Area (Ac)	i	L _u	Undeveloped		Developed	
				Q _u (cfs)	Q _u (MGD)	Q _d (cfs)	Q _d (MGD)
1	1.79	4.58	7.37	2.8	4.6	6.7	8.9
2	3.27	4.58	7.37	5.1	8.3	11.0	17.7
TOTAL	5.06			8.0	12.9	17.7	27.6

NOTES:
 1. Determination of Q's was made using the rational method.
 2. Q's used were as follows:

Run Frequency	Undeveloped	Developed
5yr Frequency	.35	.75
100 yr Frequency	.35	.75

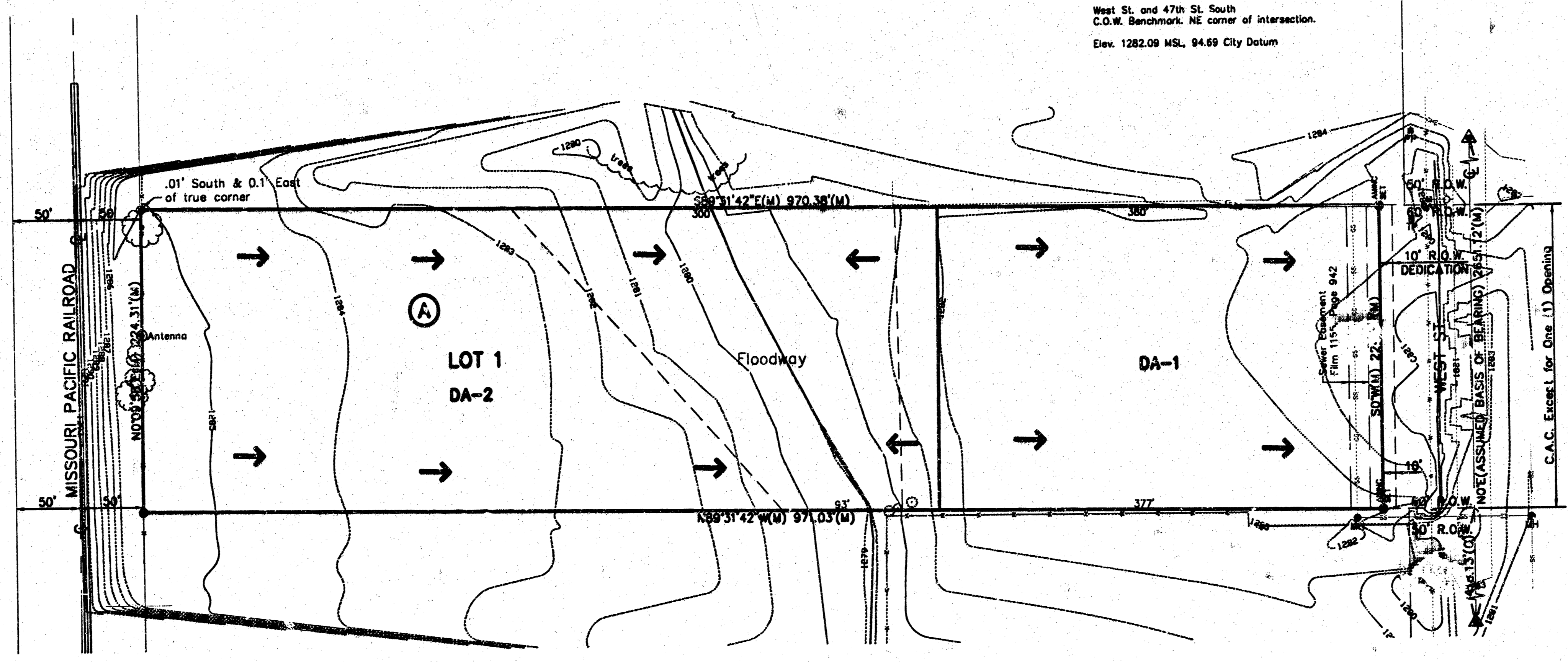


VICINITY MAP

BENCHMARK
 West 5th and 47th St. South
 C.O.M. Benchmark, NE corner of intersection.
 Elev. 1282.08 MSL, 94.69 City Datum

*On site
detention
Pond*

- LEGEND**
- ▲ = Section Corner
 - = 5/8" Rebar (found)
 - ⊕ = Bell Pedestal
 - ☼ = Cedar
 - 1298 = Contour Elevation
 - ⊕ = Fire Hydrant
 - = Fence
 - = Gas
 - ⊕ = Guy Anchor
 - ⊕ = Manhole
 - ⊕ = Power Pole
 - ⊕ = Sign
 - ⊕ = Tree



FILENAME: 03138.dwg

CONSULTING
 ENGINEERING SERVICES
 142 So. Lincoln, Wichita, KS 67202
 316/261-2515 Fax: 316/261-2529

E:\projects\03138\drainage-plan.dwg Mon Jan 12 10:54:21 2004 Matt Perez