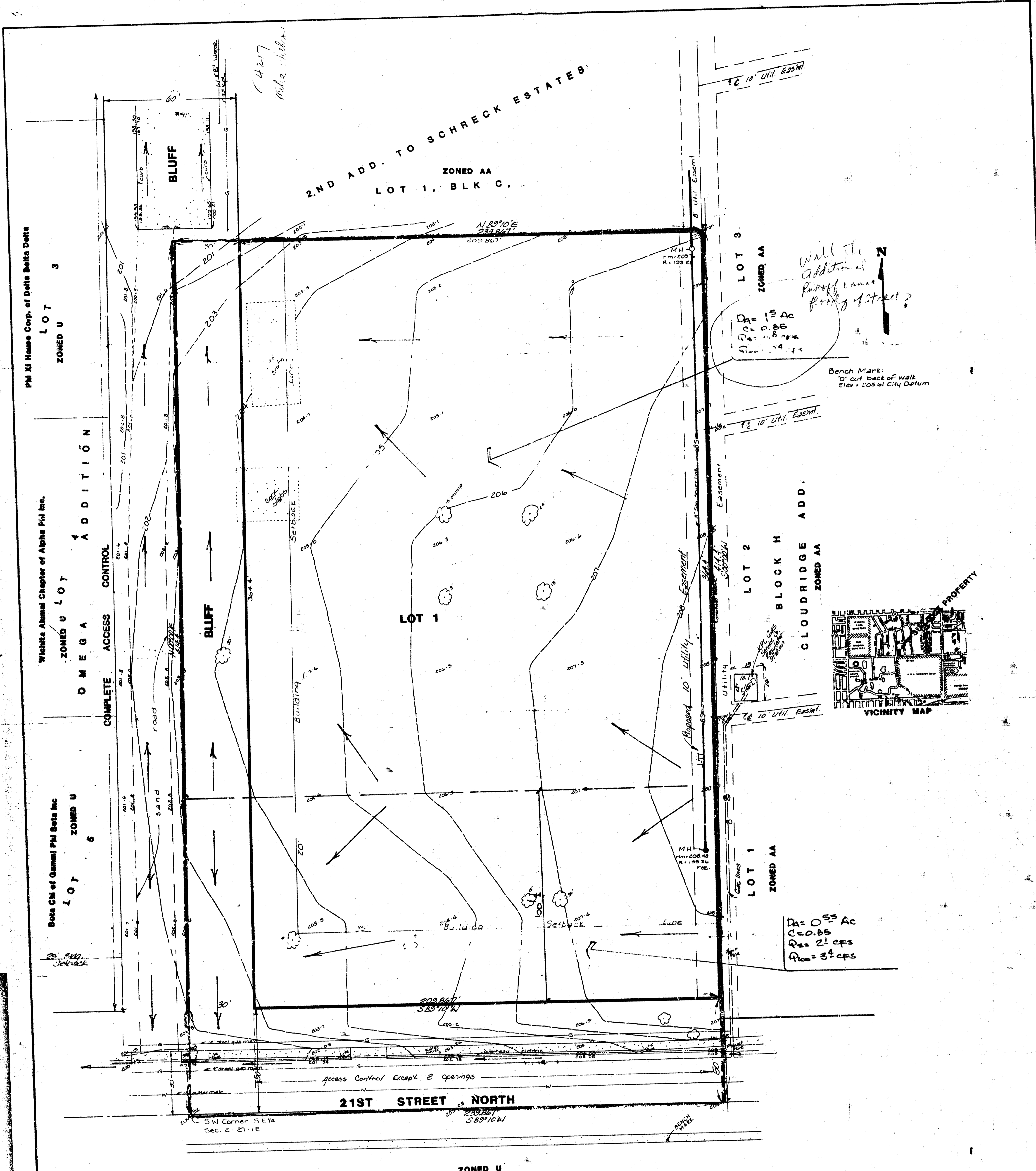


Phi Delta Theta



**PRELIMINARY PLAT
PHI DELTA THETA ADDITION**

A TRACT IN THE S.E. 1/4 SEC. 2, TWP. 27, R-1-E OF THE 6TH P.M., SEDGWICK COUNTY, KANSAS
OWNER: ROBERT GEIST

June 1, 1990
DRAINAGE PLAN
BAUGHMAN COMPANY, P.A.
SURVEYING & ENGINEERING
316292-7271 • 315 ELLIS • WICHITA, KANSAS 67211

JUNE 1, 1990