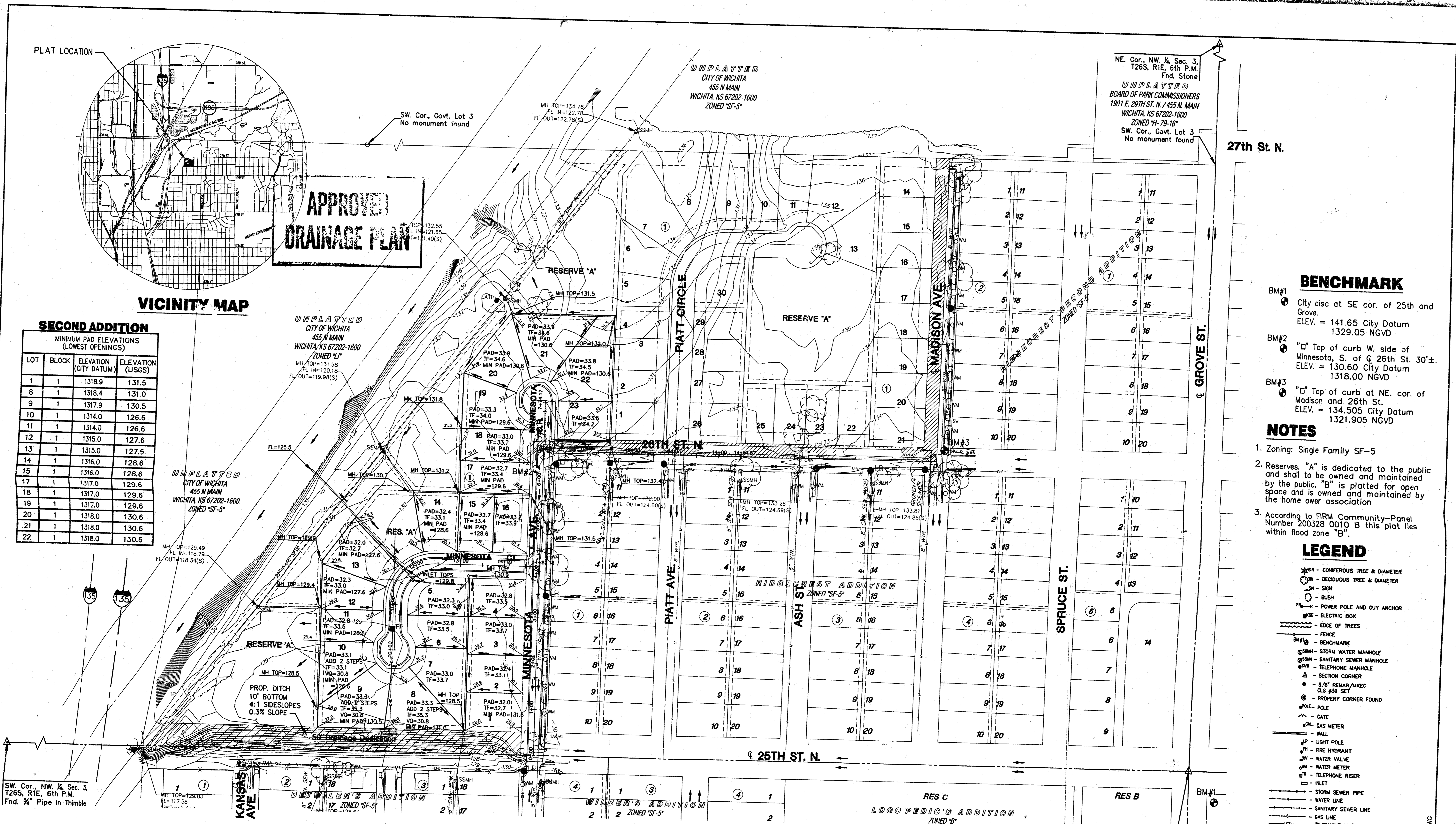


VICINITY MAP

SECOND ADDITION

MINIMUM PAD ELEVATIONS (LOWEST OPENINGS)

LOT	BLOCK	ELEVATION (CITY DATUM)	ELEVATION (USGS)
1	1	1318.9	131.6
8	1	1318.4	131.0
9	1	1317.9	130.5
10	1	1314.0	126.6
11	1	1314.0	126.6
12	1	1315.0	127.6
13	1	1315.0	127.6
14	1	1316.0	128.6
15	1	1316.0	128.6
17	1	1317.0	129.6
18	1	1317.0	129.6
19	1	1317.0	129.6
20	1	1318.0	130.6
21	1	1318.0	130.6
22	1	1318.0	130.6



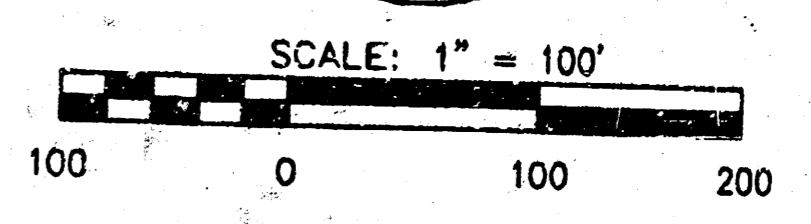
- BENCHMARK**
- BM#1 City disc at SE cor. of 25th and Grove. ELEV. = 141.65 City Datum 1329.05 NGVD
 - BM#2 "C" Top of curb W. side of Minnesota, S. of C 26th St. 30'±. ELEV. = 130.60 City Datum 1318.00 NGVD
 - BM#3 "C" Top of curb at NE. cor. of Madison and 26th St. ELEV. = 134.505 City Datum 1321.905 NGVD
- NOTES**
- Zoning: Single Family SF-5
 - Reserves: "A" is dedicated to the public and shall be owned and maintained by the public. "B" is platted for open space and is owned and maintained by the home owner association
 - According to FIRM Community-Panel Number 200328 0010 B this plat lies within flood zone "B".

- LEGEND**
- ☉ - CONIFEROUS TREE & DIAMETER
 - - DECIDUOUS TREE & DIAMETER
 - ⊙ - SIGN
 - ⊙ - BUSH
 - ⊙ - POWER POLE AND GUY ANCHOR
 - ⊙ - ELECTRIC BOX
 - ⊙ - EDGE OF TREES
 - ⊙ - FENCE
 - ⊙ - BENCHMARK
 - ⊙ - STORM WATER MANHOLE
 - ⊙ - SANITARY SEWER MANHOLE
 - ⊙ - TELEPHONE MANHOLE
 - ⊙ - SECTION CORNER
 - ⊙ - 5/8" REBAR/ARCC
 - ⊙ - PROPERTY CORNER FOUND
 - ⊙ - POLE
 - ⊙ - GATE
 - ⊙ - GAS METER
 - ⊙ - WALL
 - ⊙ - LIGHT POLE
 - ⊙ - FIRE HYDRANT
 - ⊙ - WATER VALVE
 - ⊙ - WATER METER
 - ⊙ - TELEPHONE RISER
 - ⊙ - INLET
 - ⊙ - STORM SEWER PIPE
 - ⊙ - WATER LINE
 - ⊙ - SANITARY SEWER LINE
 - ⊙ - GAS LINE
 - ⊙ - TELEPHONE LINE
 - ⊙ - UNDERGROUND ELECTRIC LINE
 - ⊙ - OVERHEAD TELEPHONE
 - ⊙ - OVERHEAD ELECTRIC

FINAL GRADING PLAN POWER C.D.C. SECOND ADDITION

OWNERS: City of Wichita, Wichita City Hall 455 N. Main St., Wichita, KS 67202 316-268-4351
 DEVELOPER: Power Community Development Corporation, Inc. 1802 N. Hydraulic St., Wichita, KS 67204 316-267-3036

DATE: JUNE 2003
 REVISED: 10-10-2003



MKEC ENGINEERING CONSULTANTS
 411 N. WEBB ROAD
 WICHITA, KS 67208
 316-264-9000

Power CDC 2 AP