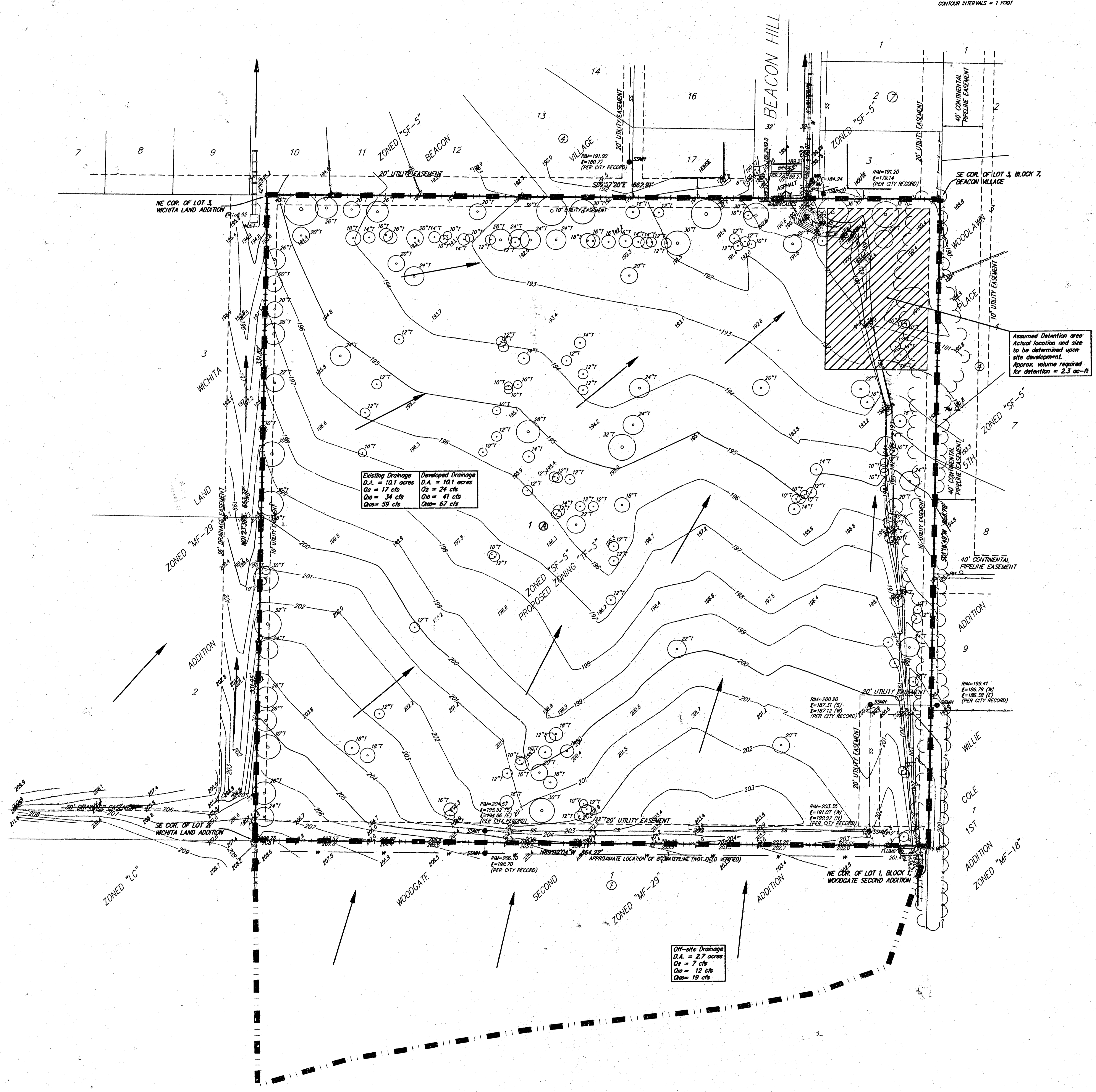
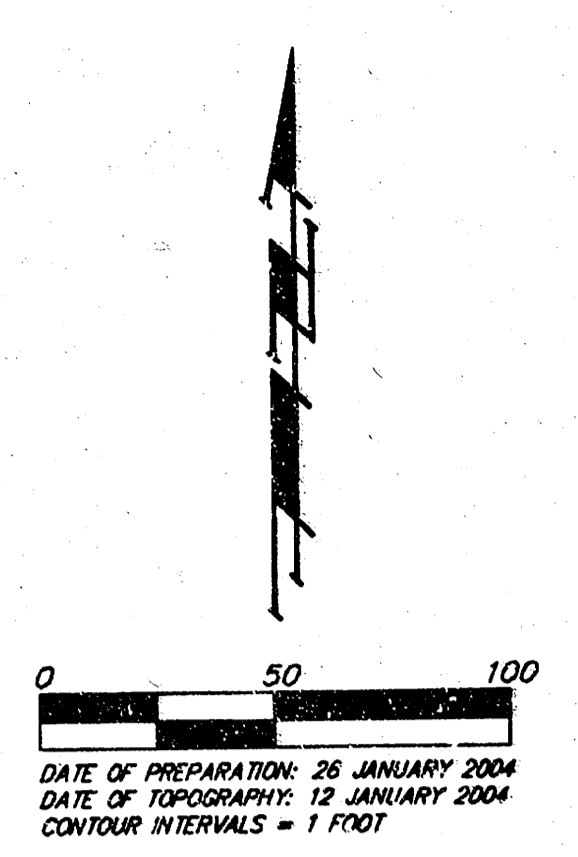


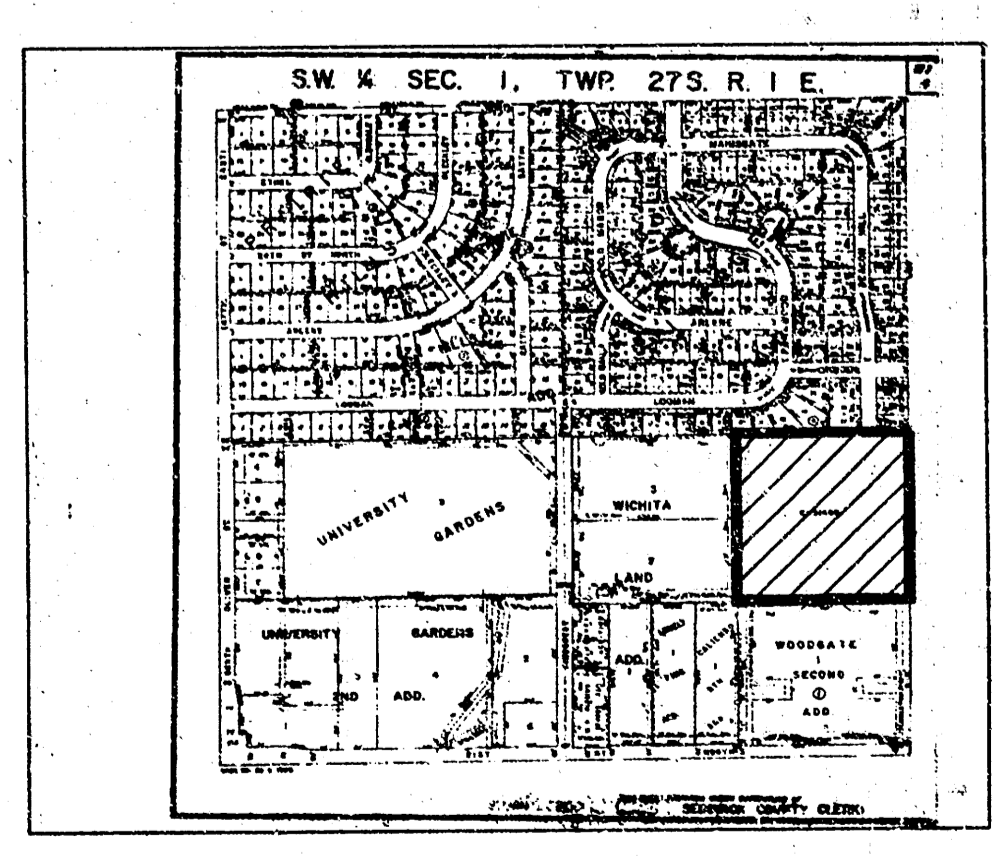
# DRAINAGE PLAN PRAIRIE VILLA AT BEACON HILL WICHITA, SEDGWICK COUNTY, KANSAS



Existing Drainage	Developed Drainage
D.A. = 10.1 acres	D.A. = 10.1 acres
Q <sub>2</sub> = 17 cfs	Q <sub>2</sub> = 24 cfs
Q <sub>10</sub> = 34 cfs	Q <sub>10</sub> = 41 cfs
Q <sub>25</sub> = 59 cfs	Q <sub>25</sub> = 67 cfs

Assumed Detention area  
Actual location and size  
to be determined upon  
site development.  
Approx. volume required  
for detention = 2.7 ac-ft

Off-site Drainage
D.A. = 2.7 acres
Q <sub>2</sub> = 7 cfs
Q <sub>10</sub> = 12 cfs
Q <sub>25</sub> = 19 cfs



- BENCHMARK:**  
 □ BACK OF WALK SW CORNER OF WOODGATE 2ND ADDITION ELEV. = 221.61 CITY DATUM  
 \* ON INLET TOP SW OF NW CORNER OF WICHITA LAND ADDITION ELEV. = 195.45
- = #4 REBAR W/ "BAUGHMAN" CAP (FOUND)
  - = #4 REBAR W/ "BAUGHMAN" CAP (SET)
  - ⊙ = #4 REBAR W/ "SIS" CAP (FOUND)
  - ⊗ = 1 1/4" IRON (FOUND)
  - = 3/4" IRON (FOUND)
  - Sign = Sign
  - SSW = Sanitary Sewer Manhole
  - T = Tree
  - WM = Water Meter
  - WM = Water Valve
  - PM = Pipeline Marker