

SKETCH PLAT QUIKTRIP 3RD ADDITION

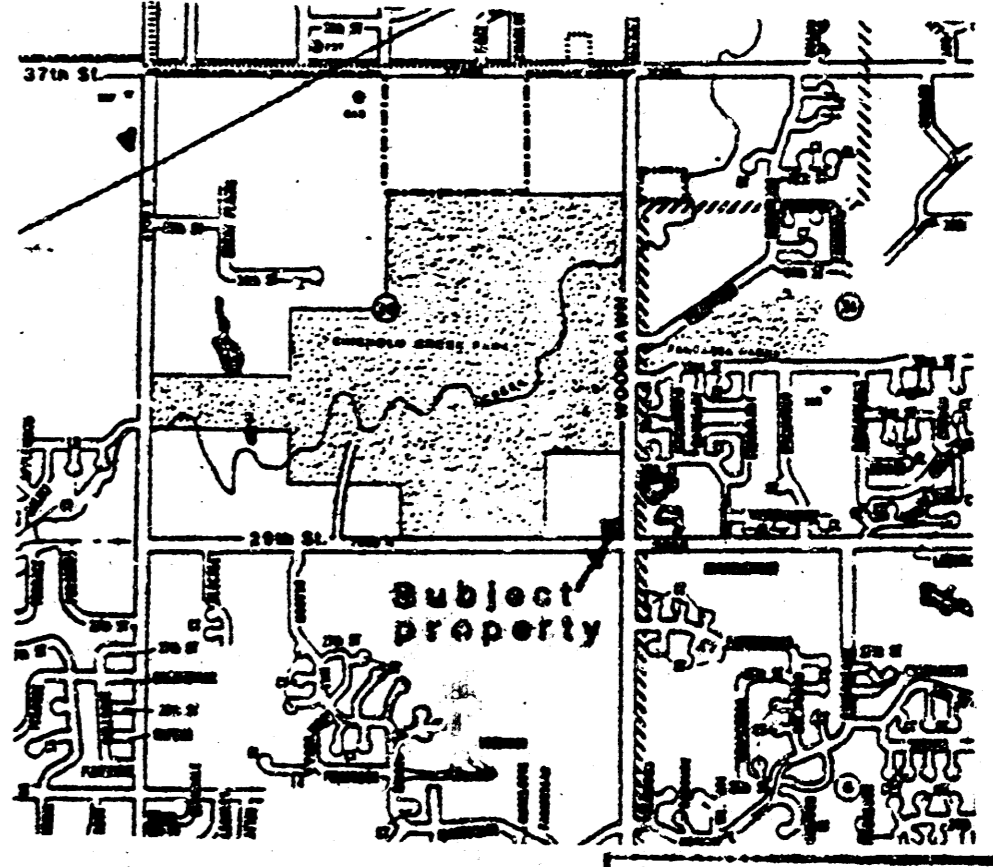
We, Baughman Company, P.A., Surveyors in aforesaid county and state do hereby certify that we did on this 13th day of September, 1990, survey a tract in the S.E. 1/4 of Sec. 36, Twp. 26-S, R-1-E of the 6th P.M., Sedgwick County, Kansas, described as beginning at the S.E. Corner of said S.E. 1/4; thence west along the south line of said S.E. 1/4, 275.01 feet; thence north parallel with the east line of said S.E. 1/4, 258.70 feet; thence east at right angles to the east line of said S.E. 1/4, 275 feet to a point on the east line of said S.E. 1/4; thence south 260.77 feet to the place of beginning, except the east 50 feet thereof and the south 40 feet thereof for road, and except that part deeded for street as recorded at Film 586, Page 624.

OWNER: Woodlawn Land Company Partnership,
a Kansas General Partnership

Contract Purchaser:
QuikTrip Corp.



BENCH MARK:
Square cut on top of curb on west side of Woodlawn opposite the S.E. corner of subject property.
Elev. = 174.66 City Datum



**APPROVED
DRAINAGE PLAN**

DRAINAGE PLAN

BAUGHMAN COMPANY P. A.
SURVEYING & ENGINEERING
316/262-7271 • 315 ELLIS • WICHITA, KANSAS 67211

OCT. 5, 90