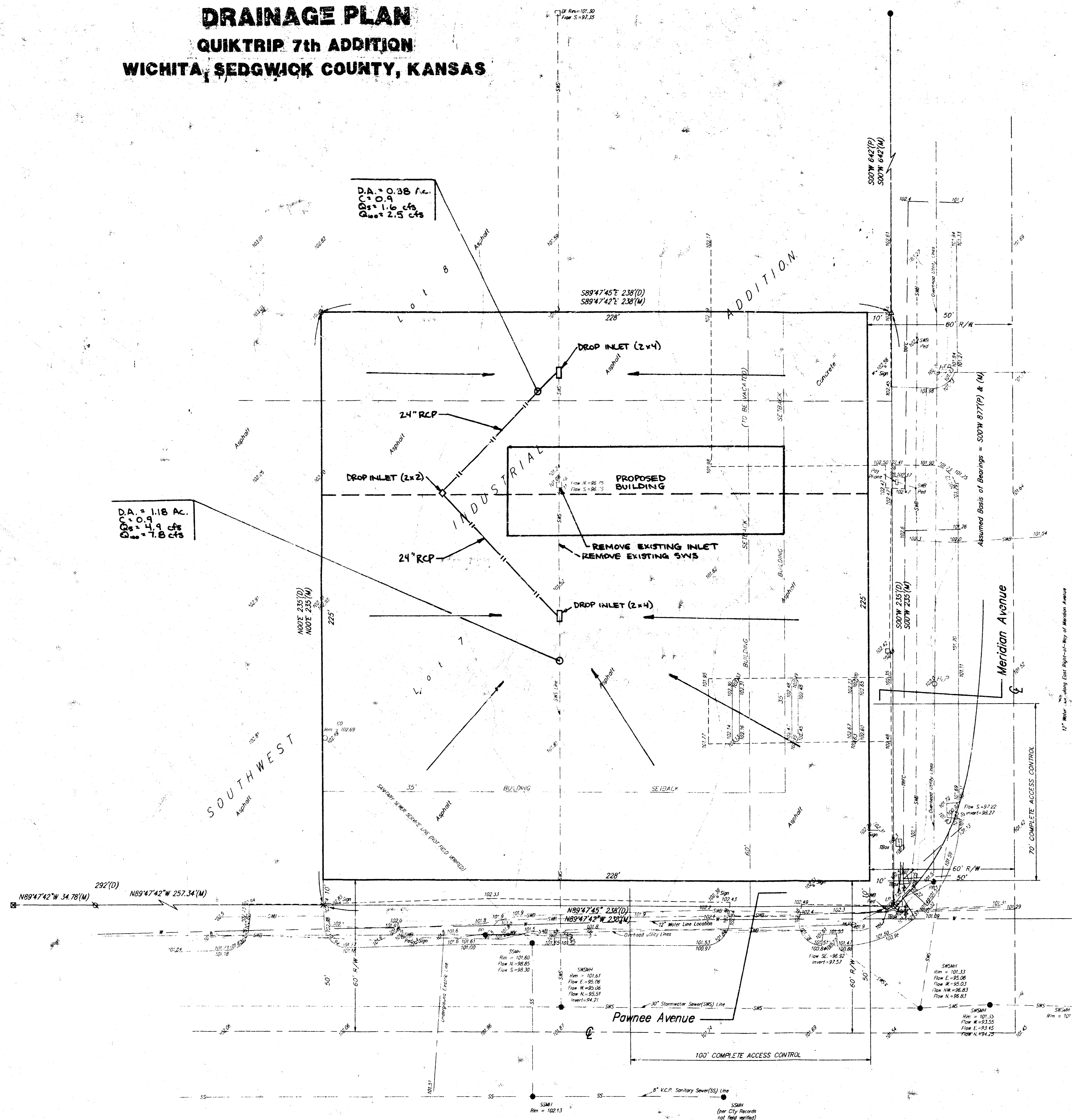
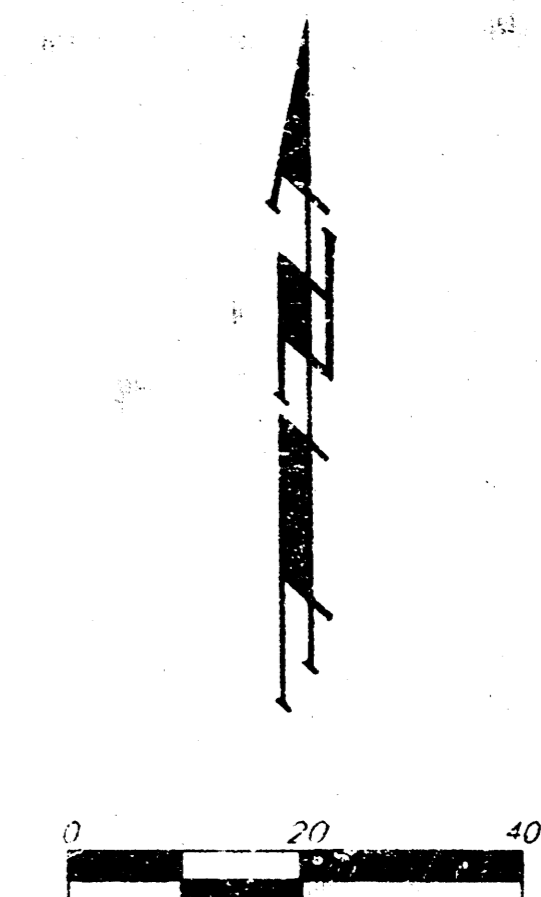


**DRAINAGE PLAN**  
**QUIKTRIP 7th ADDITION**  
**WICHITA, SEDGWICK COUNTY, KANSAS**



D.A. = 0.38 A.C.  
 D.C. = 0.9  
 D.S. = 1.6 cfs  
 D.S. = 2.5 cfs

D.A. = 1.18 A.C.  
 D.C. = 0.9  
 D.S. = 4.9 cfs  
 D.S. = 7.8 cfs



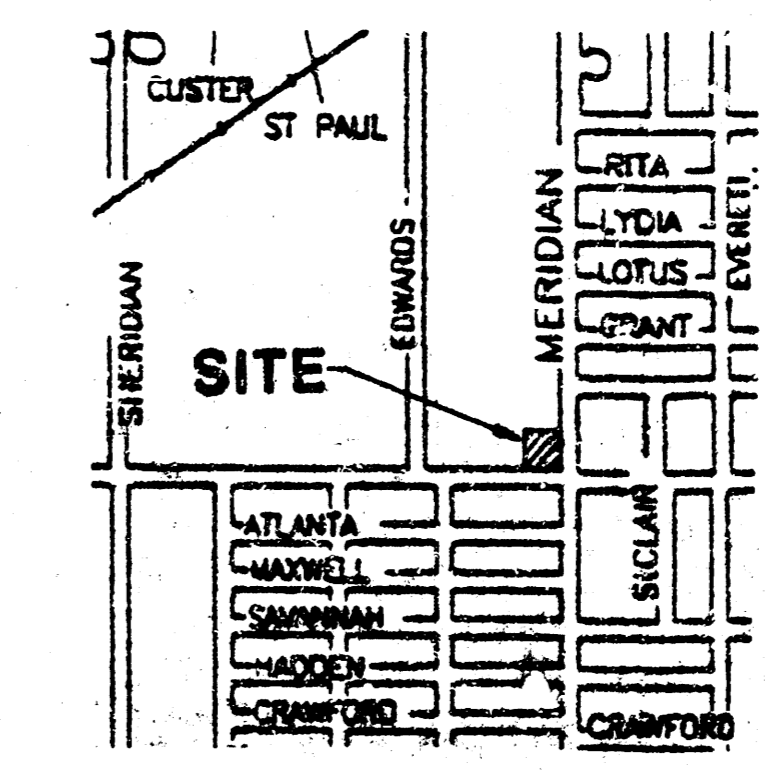
- (D) = Described
- (P) = Platted
- (M) = Measured
- = 1/2" Iron Pipe Found
- ⊗ = Chiseled Cross Found
- ⊗ = Chiseled Cross Set
- = P.X. Nail Set
- = 3/4" Iron Pipe Found
- △ = #4 Baughman Rebar Set
- CO = Sanitary Sewer Cleanout
- DI = Drop Inlet
- HLP = High Line Pole
- LP = Light Pole
- PP = Power Pole
- TBox = Traffic Control Box
- SSMH = Sanitary Sewer Manhole
- SYB Pad = Southwestern Bell Pedestal
- SWSMH = Stormwater Sewer Manhole

OWNER:  
 BUILDERS, INC.  
 ATTN: JIM NUNGESESSER  
 1081 S. GLENDALE  
 WICHITA, KS 67218  
 PH. 316-684-1400

CONTRACT PURCHASER:  
 QUIKTRIP CORP.  
 ATTN: KEITH SPIKER  
 P.O. BOX 3475  
 TULSA, OK  
 PH. 918-836-8551

LEGAL DESCRIPTION:  
 THE EAST 238 FEET OF LOT 7, TOGETHER  
 WITH THE SOUTH 35 FEET OF THE EAST  
 238 FEET OF LOT 8, BLOCK 2, SOUTHWEST  
 INDUSTRIAL ADDITION, WICHITA, KANSAS.

BENCHMARK:  
 MERIDIAN & PAWNEE  
 CITY OF WICHITA BENCHMARK DISC - N.W. COR. OF  
 INTERSECTION, TRAFFIC SIGNAL LIGHT BASE.  
 71.10' NW. OF SEC. COR. IRON,  
 9.3' SSW. OF C. OF TRAFFIC SIGNAL MANHOLE  
 42.5' SW. OF C. OF CURB INLET  
 ELEV. = 102.43 CITY DATUM



2-20-96  
 1-19-96

**BAUGHMAN COMPANY, P.A.**  
 ENGINEERING, SURVEYING, & PLANNING  
 (316)-262-7271 • 315 ELLIS • WICHITA, KANSAS 67214