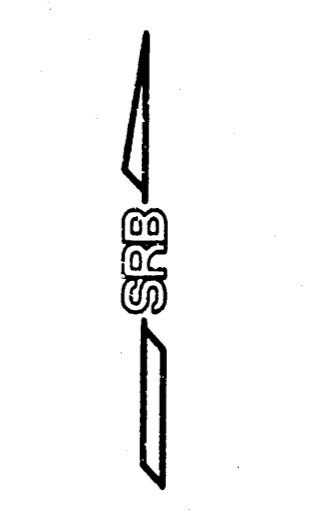


Drainage Area = 0.38 Ac.
 Hydrologic Soil Type "B"
 $T_c = 15$ min.
 $C_p = 0.48$
 $C_{in} = 0.64$
 $I_p = 3.83$ in.
 $I_m = 7.37$ in.
 $Q_p = 0.7$ cfs
 $Q_m = 1.8$ cfs

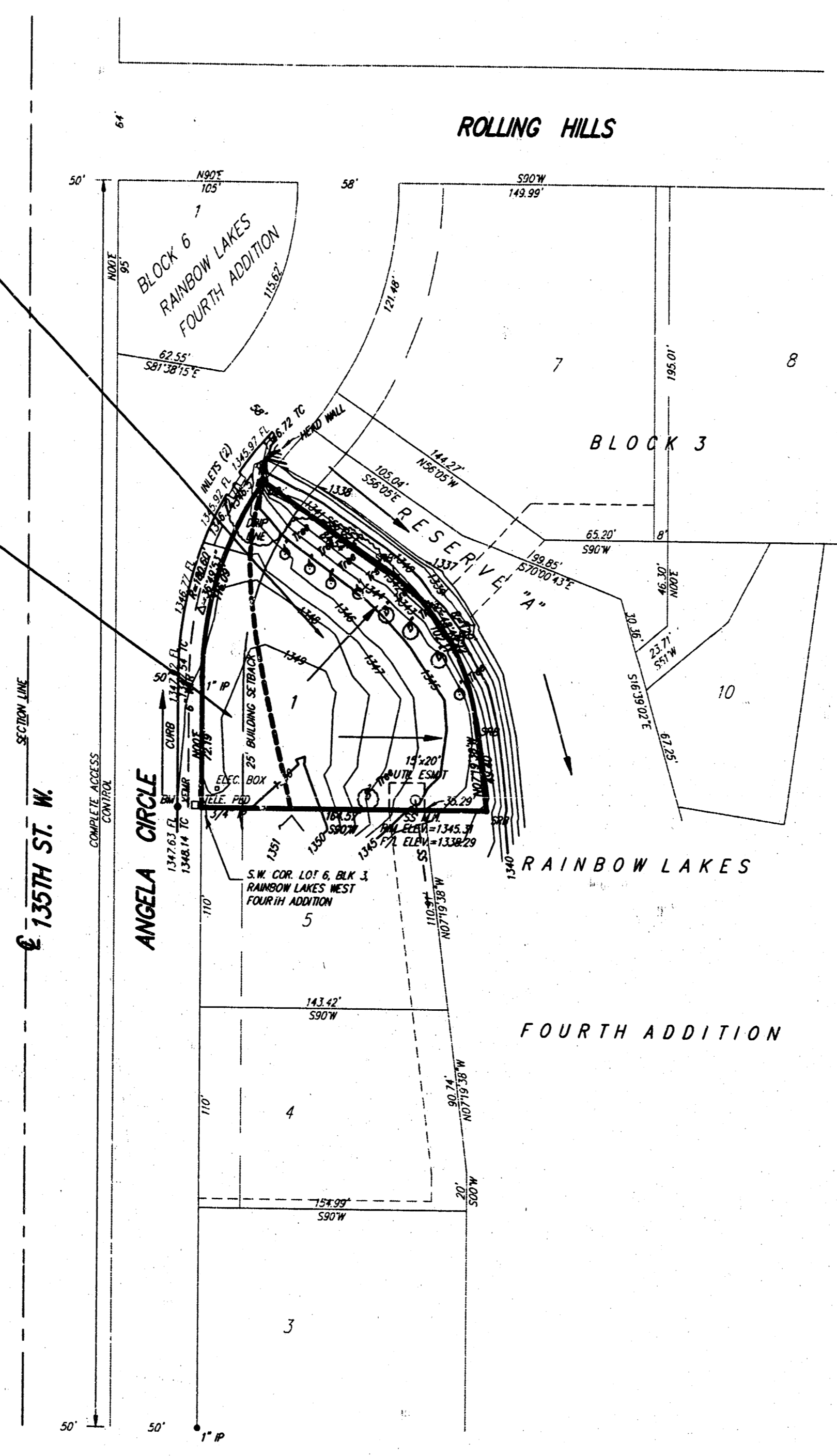
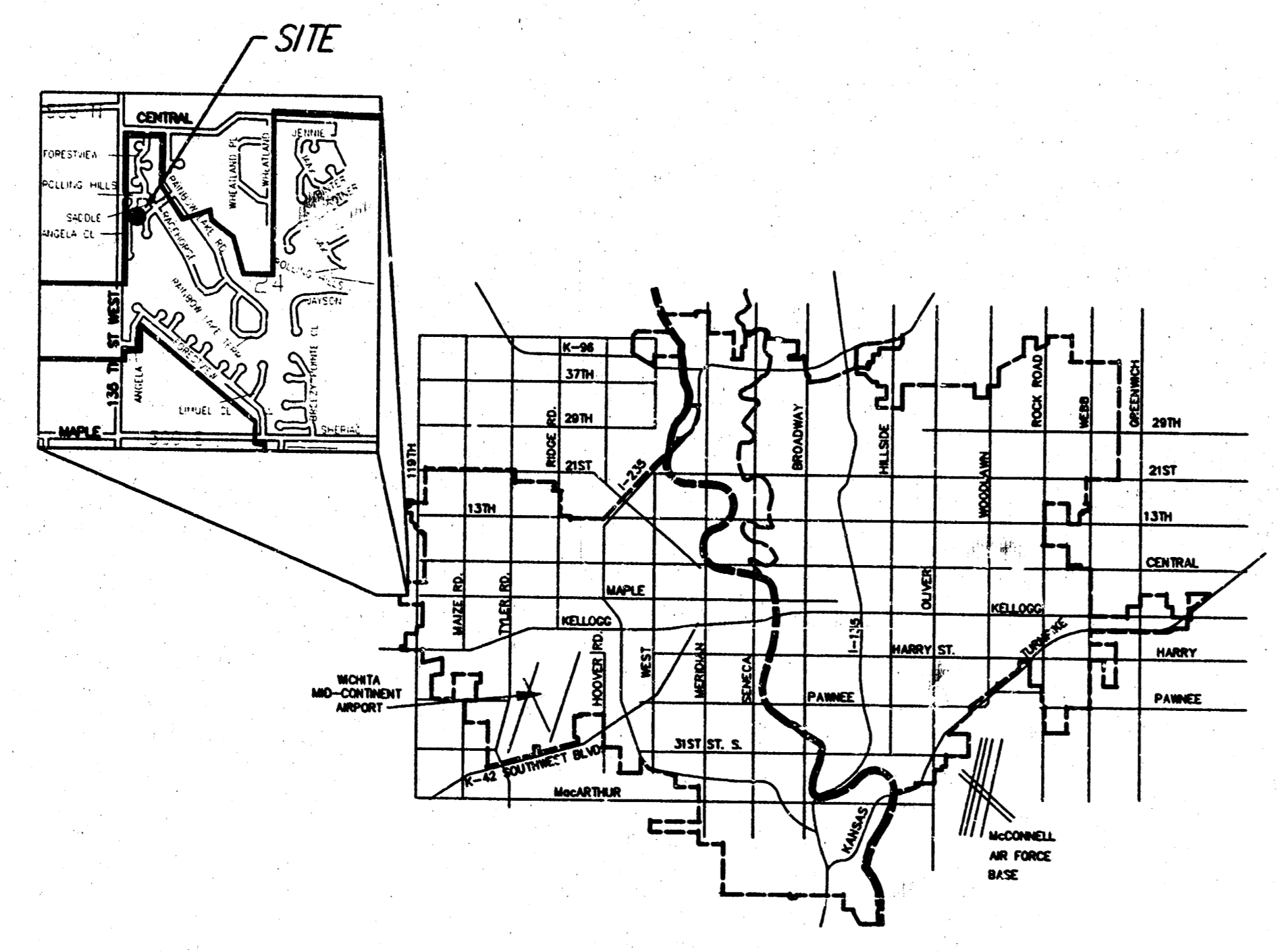
Drainage Area = 0.12 Ac.
 Hydrologic Soil Type "B"
 $T_c = 15$ min.
 $C_p = 0.48$
 $C_{in} = 0.64$
 $I_p = 3.83$ in.
 $I_m = 7.37$ in.
 $Q_p = 0.2$ cfs
 $Q_m = 0.4$ cfs



SCALE: 1"=50'
 ELEV. = CITY DATUM

MINIMUM BUILDING PAD FOR
 LOWEST OPENING INTO A
 STRUCTURE FOR LOT 1 SHALL
 BE AN ELEVATION OF 1341.3
 MSL.

BENCH MARK:
 "1" Cut, top of south
 curb of Rolling Hills, north
 of the N.E. Corner, Lot 8,
 Block 3, Rain Lakes West
 Fourth Addition, Sedgwick
 County, Kansas.
 Elev. = 1349.12 MSL



RAINBOW LAKES WEST FIFTH ADDITION DRAINAGE PLAN WICHITA, KANSAS			
SRB	524 NORTH MAIN WICHITA, KANSAS 67203 http://www.srb.com	316-264-8008 FAX 316-442-1 Crescent and Main	SHEET 1 OF 1
	SAVOY, RUGGLES & BOHM, P. A. ENGINEERING & SURVEYING		
PROJECT NUMBER 1074P			DATE June 23, 1998
DESIGN JDS	DRAWN JDS	UTILITY JDS	