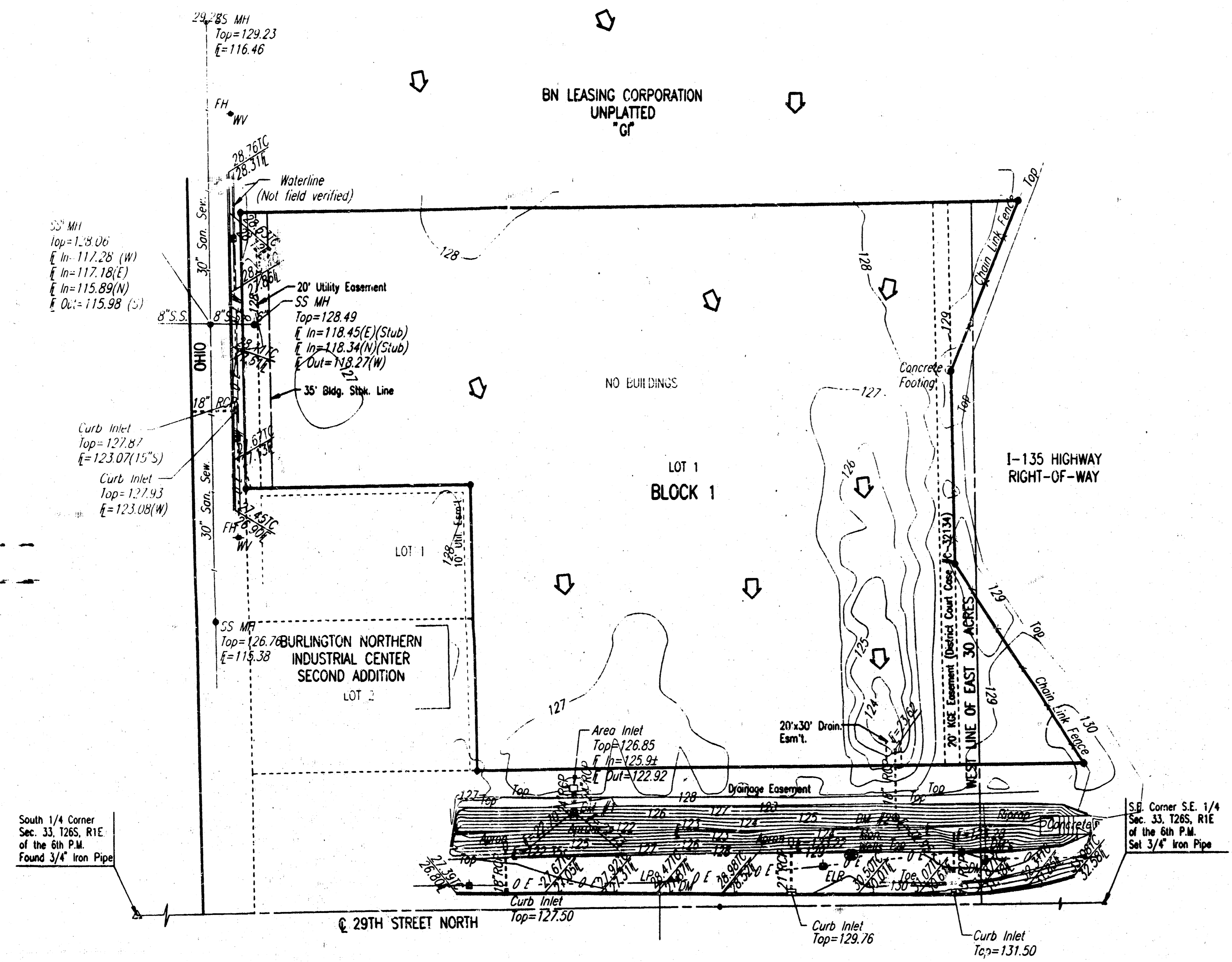


**DRAINAGE PLAN**  
**REDBURN 2ND ADDITION**  
 TO WICHITA, SEDGWICK COUNTY, KANSAS



SCALE: 1" = 100'  
 • = 3/4" IRON FOUND

DATUM BENCH MARK: RAILROAD SPIKE EMBEDDED IN CONCRETE HUBGUARD, S.W. CORNER RCB UNDER OHIO ST. 75'± NORTH OF 29TH STREET NORTH ELEV.=129.61

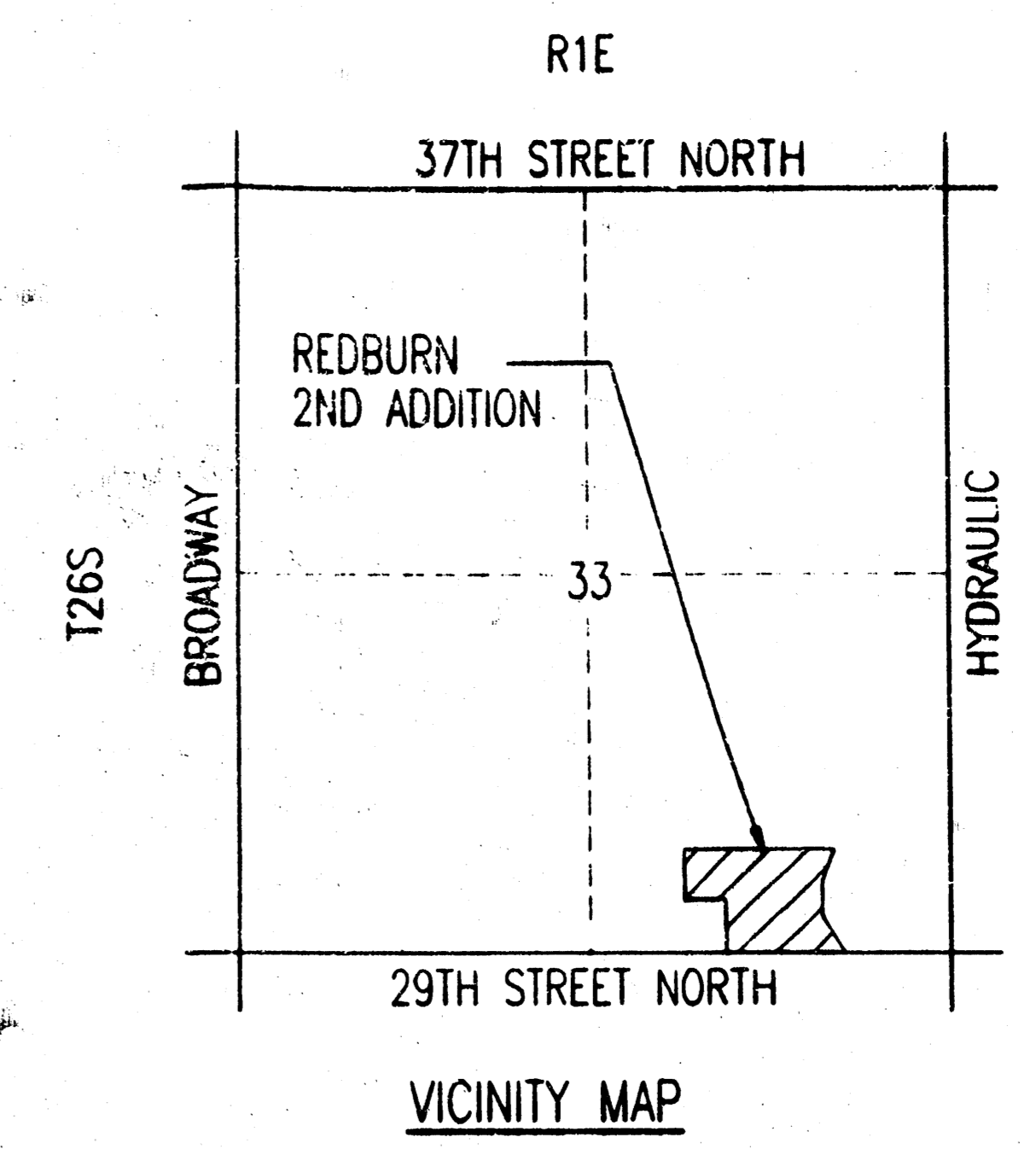
BENCH MARK 1: CHISELED "I" IN TOP OF HEADWALL OF OUTFALL OF AREA INLET, EAST OF S.W. PROPERTY CORNER. ELEV.=128.89

BENCH MARK 2: CHISELED "I" IN TOP OF PIPE OF OUTFALL OF AREA INLET, WEST OF S.E. PROPERTY CORNER. ELEV.=124.73

CITY DATUM USED FOR ALL ELEVATIONS.  
 MEAN SEA LEVEL = CITY DATUM + 1187.±  
 ALL SOILS ARE SCS HYDROLOGIC SOIL GROUP TYPE 'D'.

**LEGEND**  
 STORM WATER FLOW

CONTRIBUTING AREA = 13.86 ACRES  
 RUNOFF COEFFICIENT = 0.76  
 ASSUMED TIME TO CONCENTRATION = 20 MINUTES  
 CONTRIBUTING 5 YEAR FLOWRATE = CIA = 0.76\*4.00\*13.86=42 CFS



DSR: P.M. OPER. P.M. SCALE: 1"=100.00  
 CA: 1997/9/7/19/DRN/PLN 08-07-1997 8:17:02 pm