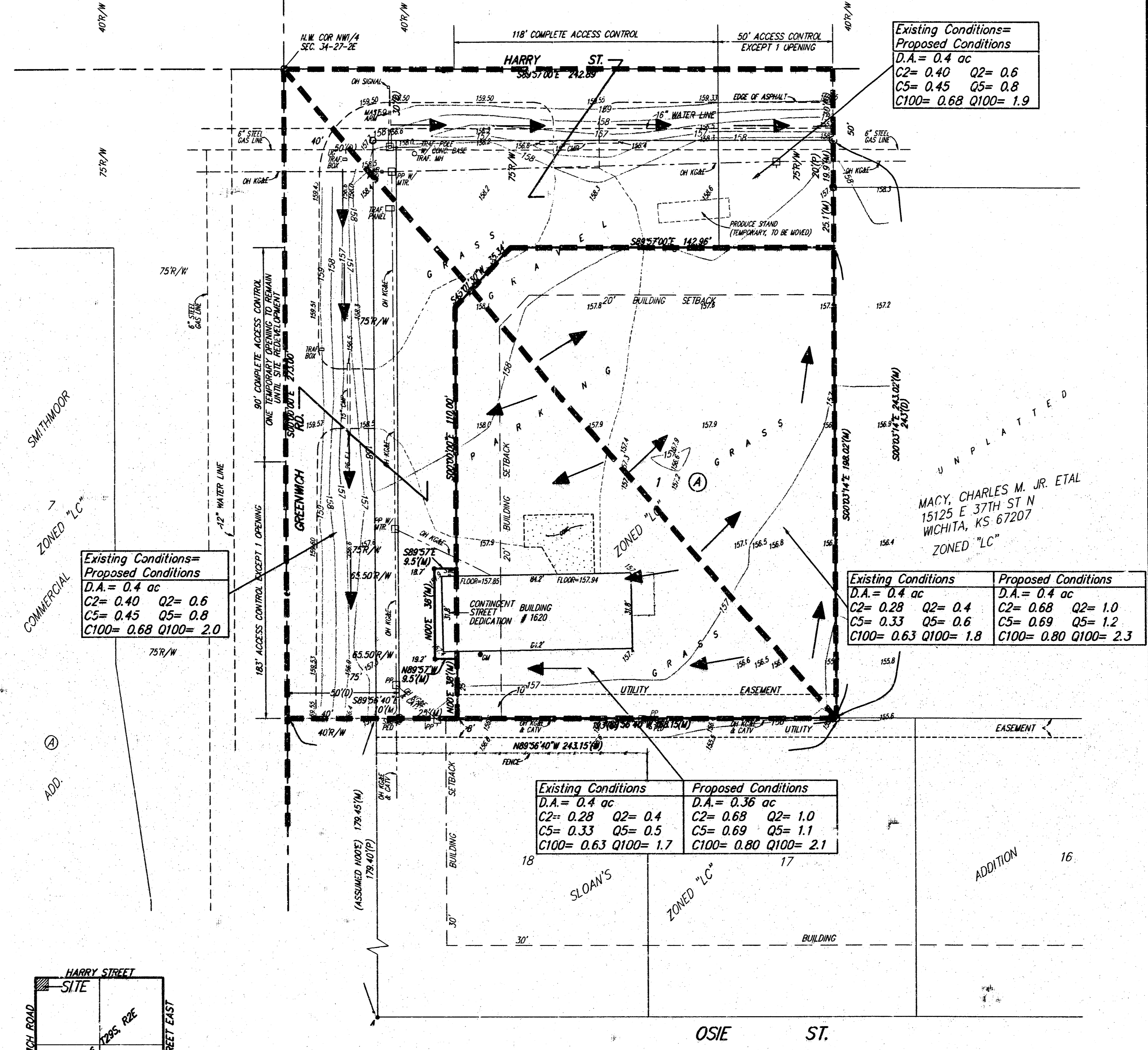


DRAINAGE PLAN RALPH REED ADDITION WICHITA, SEDGWICK COUNTY, KANSAS

SANDMAN COLBY & GENEVIEVE B. REV TR
435 N BROADWAY
WICHITA, KS 67202
ZONED "LC"

PRAY, FERN REVOCABLE TRUST
FERN PRAY TRUSTEE
14605 TIMBER LAKE RD
WICHITA, KS 67230
ZONED "LC"

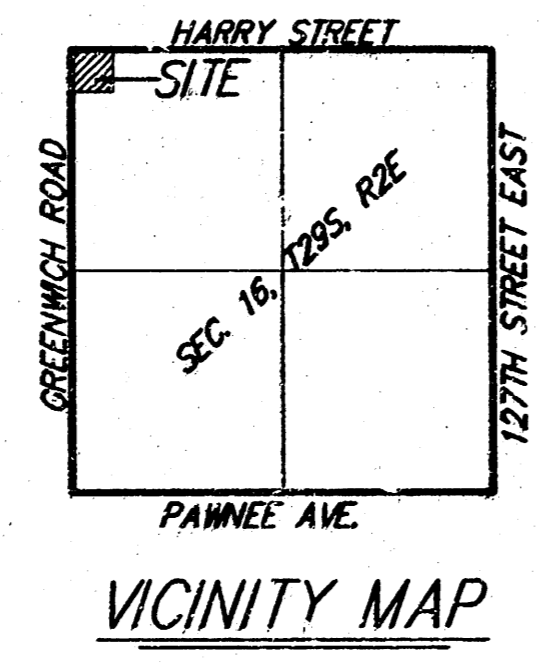


Existing Conditions=	
Proposed Conditions	
D.A. = 0.4 ac	
C2 = 0.40	Q2 = 0.6
C5 = 0.45	Q5 = 0.8
C100 = 0.68	Q100 = 1.9

Existing Conditions=	
Proposed Conditions	
D.A. = 0.4 ac	
C2 = 0.40	Q2 = 0.6
C5 = 0.45	Q5 = 0.8
C100 = 0.68	Q100 = 2.0

Existing Conditions	
Proposed Conditions	
D.A. = 0.4 ac	
C2 = 0.28	Q2 = 0.4
C5 = 0.33	Q5 = 0.6
C100 = 0.63	Q100 = 1.8
D.A. = 0.4 ac	
C2 = 0.68	Q2 = 1.0
C5 = 0.69	Q5 = 1.2
C100 = 0.80	Q100 = 2.3

Existing Conditions	
Proposed Conditions	
D.A. = 0.4 ac	
C2 = 0.28	Q2 = 0.4
C5 = 0.33	Q5 = 0.5
C100 = 0.63	Q100 = 1.7
D.A. = 0.36 ac	
C2 = 0.69	Q2 = 1.0
C5 = 0.69	Q5 = 1.1
C100 = 0.80	Q100 = 2.1



- # = #4 REBAR W/ "DAUGHTMAN" CAP (FOUND)
- = #4 REBAR W/ "DAUGHTMAN" CAP (SET)
- ⊙ = REBAR W/ "ARMSTRONG" CAP (FOUND)
- ⊖ = 1" IRON (FOUND)
- = 1/2" IRON (FOUND)
- = "K" NAIL & SHIVER IN STUMP (FOUND)
- ⊕ = 3/4" IRON (FOUND)
- (M) = MEASURED
- (D) = DESCRIBED
- (P) = PLATTED

BENCHMARK:
R.R. SPIKE IN H.L.P., 50' S.W. OF THE N.W. COR., N.W. 1/4, SEC. 34, TWP. 27-S,
R-2-E OF THE 6TH P.M.
ELEV. = 1246.62 M.S.L.

DATE OF PREPARATION: 28 JULY 2003
DATE OF TOPOGRAPHY: 18 JULY 2003
CONTOUR INTERVALS = 1 FOOT

05 August 2003

BAUGHMAN COMPANY P.A.
ENGINEERING, SURVEYING, & PLANNING
316-282-7271 • 316-282-7272 • 316-282-7273
F:\Projects\Projects\Wichita\Reed\Reed.dwg