

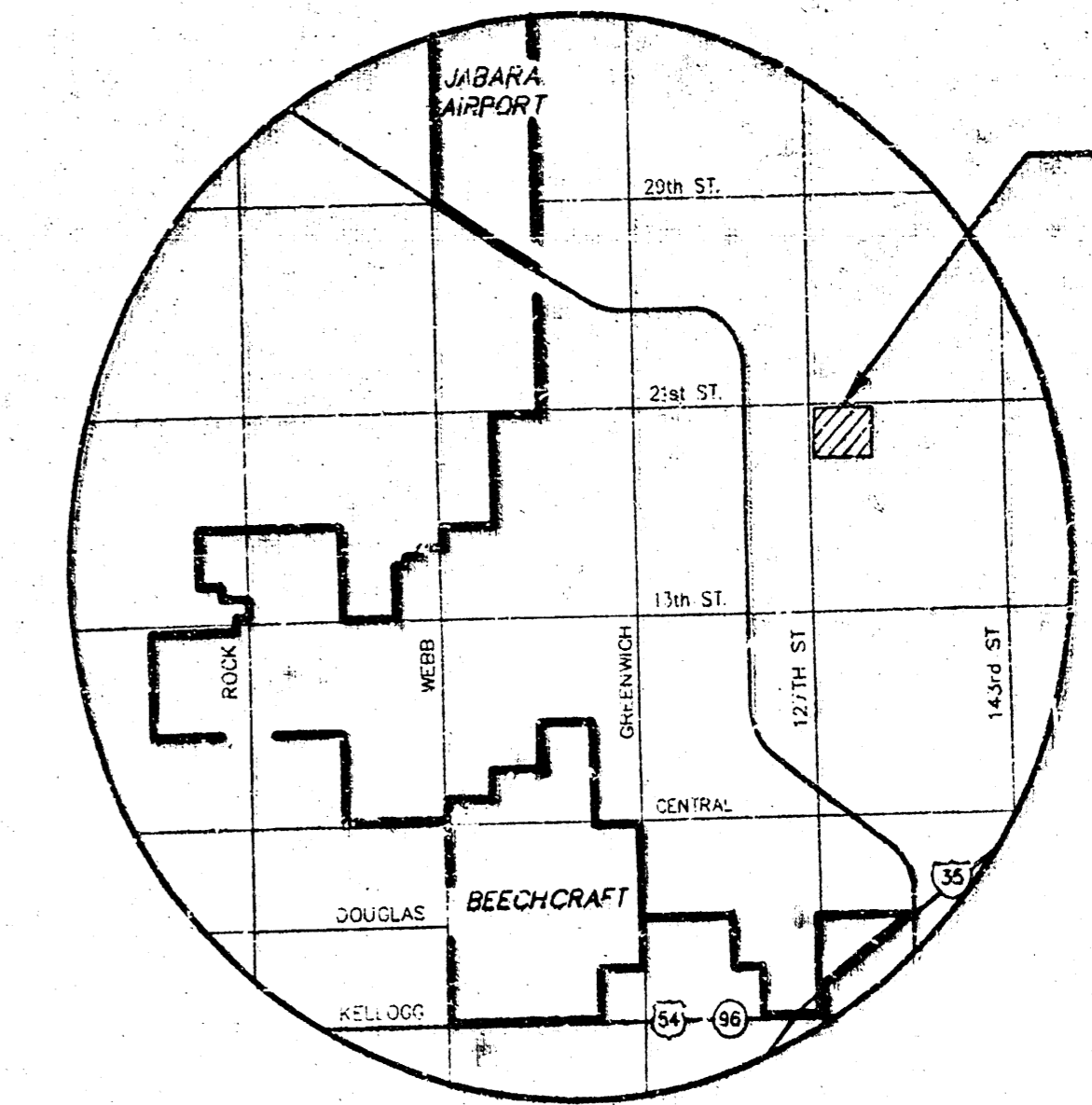
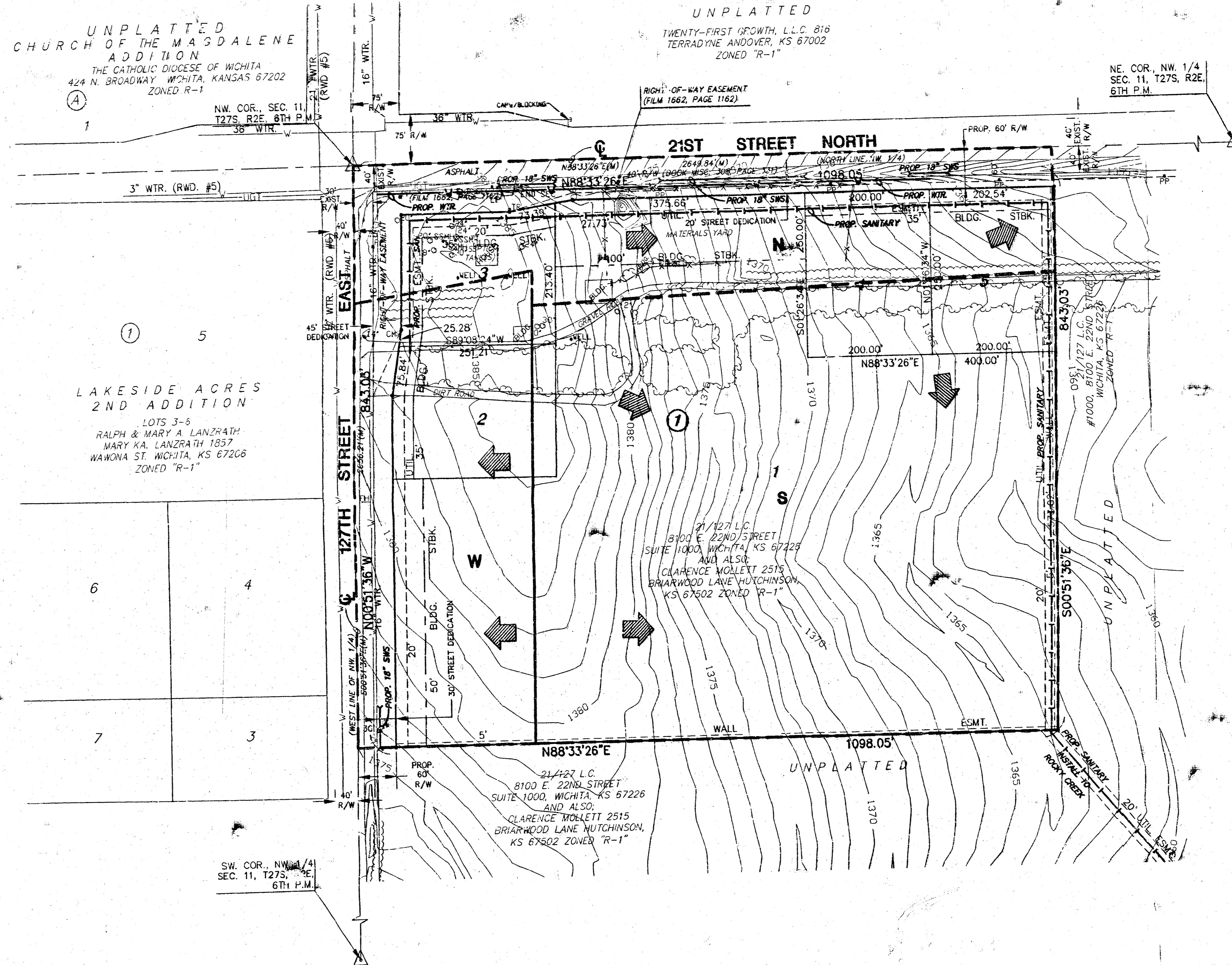
UNPLATTED  
CHURCH OF THE MADDALENE  
ADDITION  
THE CATHOLIC DIOCESE OF WICHITA  
424 N. BROADWAY WICHITA, KANSAS 67202  
ZONED R-1

UNPLATTED  
TWENTY-FIRST GROWTH, L.L.C. 816  
TERRADYNE ANDOVER, KS 67002  
ZONED "R-1"

NE COR., NW 1/4  
SEC. 11, T27S, R2E,  
6TH P.M.

LAKESIDE ACRES  
2ND ADDITION  
LOTS 3-5  
RALPH & MARY A LANZRAITH  
MARY KA LANZRAITH 1857  
WAKONA ST. WICHITA, KS 67206  
ZONED "R-1"

SW COR., NW 1/4  
SEC. 11, T27S, R2E,  
6TH P.M.



VICINITY MAP

LEGEND

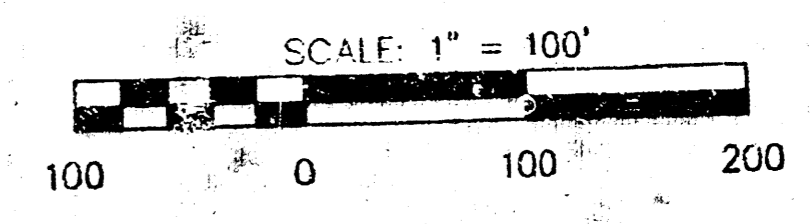
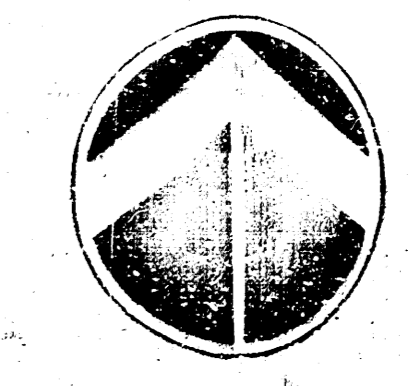
- TR - TELEPHONE RISER
- POLE - POLE
- GATE - GATE
- WELL - WELL
- LP - LIGHT POLE
- FH - FIRE HYDRANT
- WV - WATER VALVE
- WM - WATER METER
- CT - CONIFEROUS TREE & DIAMETER
- DT - DECIDUOUS TREE & DIAMETER
- SN - SIGN
- BUSH - BUSH
- PP - POWER POLE AND GUY ANCHOR
- KE - ELECTRIC BOX
- ET - EDGE OF TREES
- FENCE - FENCE
- BM - BENCHMARK
- SC - SECTION CORNER
- 5/8" REBAR/MKEC - 5/8" REBAR/MKEC
- CS #39 SET - CS #39 SET
- PC - PROPERTY CORNER FOUND
- SS - STORM SEWER PIPE
- OE - OVERHEAD ELECTRIC

BENCHMARK

BM#1 60" IN SOUTH LEG OF "H" POLE  
HIGH LINE STRUCTURE, 75' NORTH &  
80' EAST OF Q 127TH STREET & Q  
ST. LOUIS AND SAN FRANCISCO  
RAILROAD.  
ELEV. = 1365.37'

NOTES

1. ZONING: LIMITED COMMERCIAL "LC"
2. SUBJECT TO COMMUNITY UNIT PLAN (DP-222)



# DRAINAGE AND UTILITY PLAN

# REED COMMERCIAL ADDITION

DATE: AUGUST 2001

OWNERS/DEVELOPER: 21/127 L.C., #1000, 8100 E. 22ND STREET, WICHITA, KANSAS 67226

