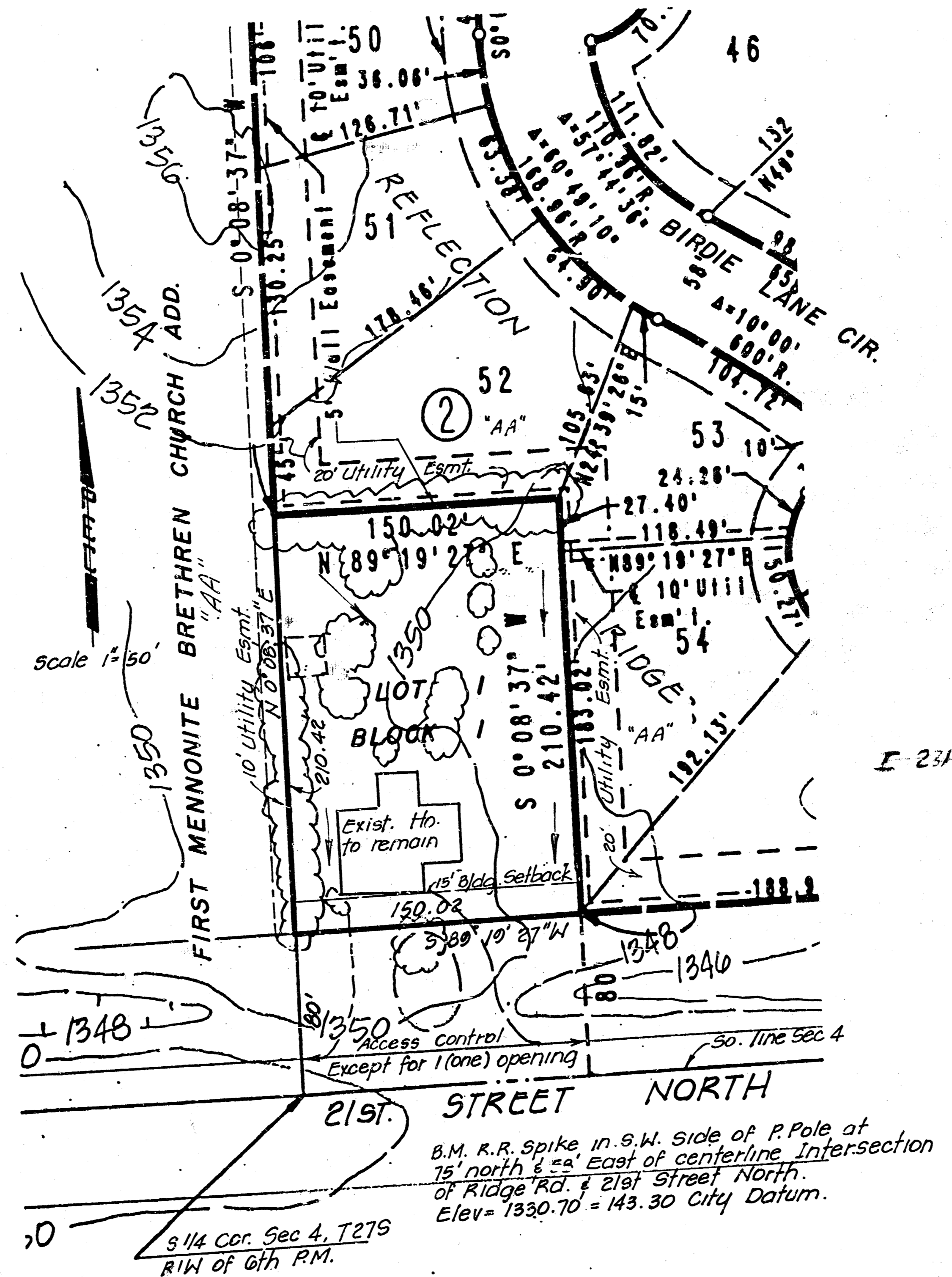


Drainage Plan VICINITY MAP
REFLECTION RIDGE 2nd ADDITION
 TO WICHITA, SEDGWICK COUNTY, KANSAS



OWNER: REFLECTION RIDGE INC.
 2301 N. RIDGE RD Wichita, Ks. 67205.

ENGINEER: P.E.C. P.O.
 1440 English Wichita, Ks. 67211.

Note: Lot 1 shall be graded to drain to 21st St. N. via flumes, drives, private storm sewers and/or other approved drainage facilities.