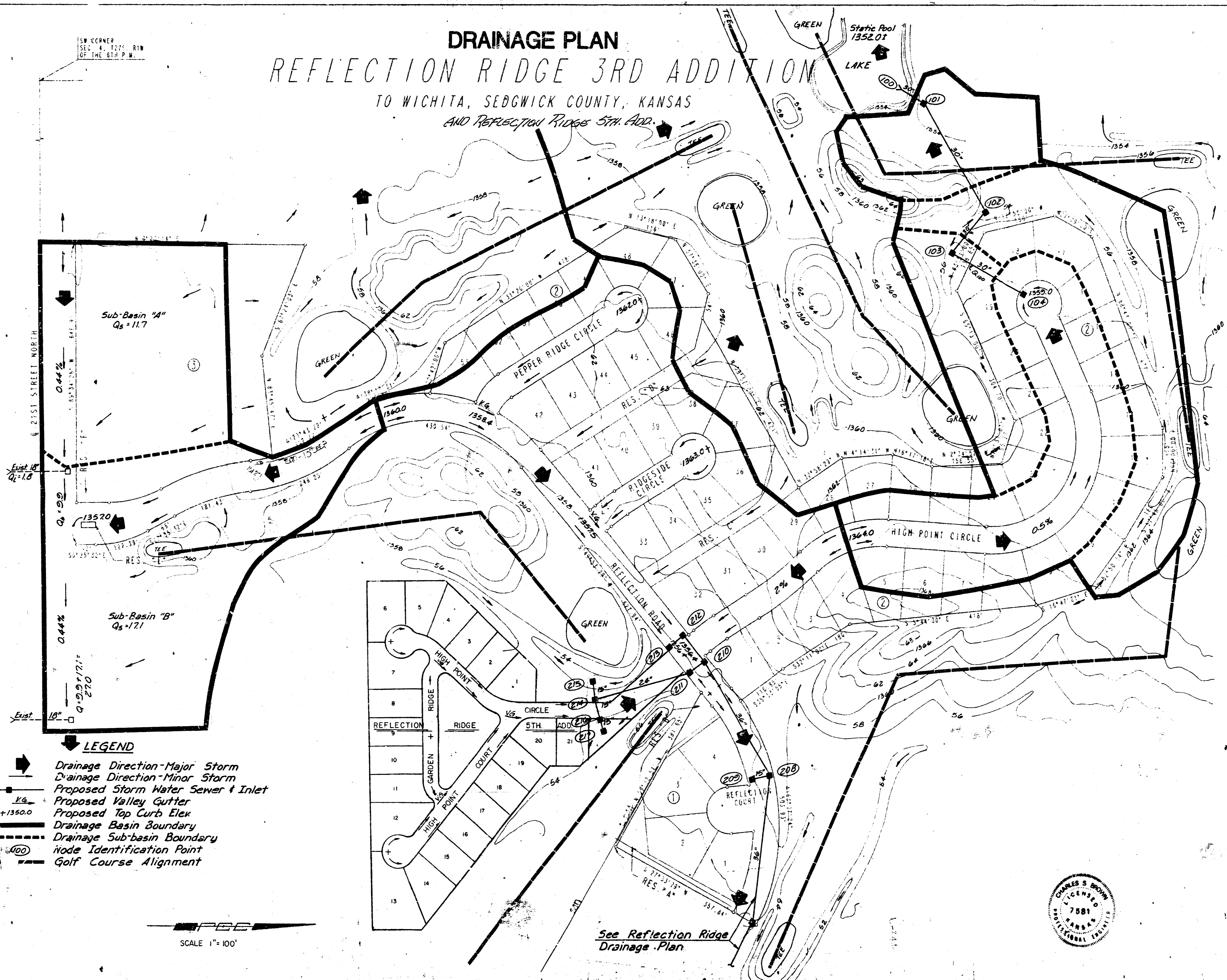


Reflection Ridge 5th

DRAINAGE PLAN REFLECTION RIDGE 3RD ADDITION TO WICHITA, SEDGWICK COUNTY, KANSAS AND Reflection Ridge 5th Add.



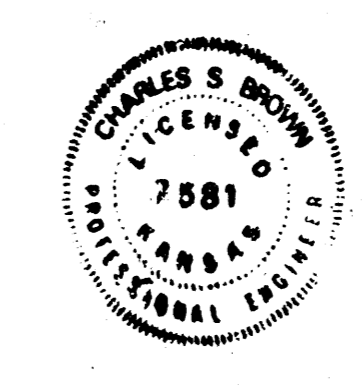
SW CORNER
SEC. 4, T21N, R1W
OF THE 6TH P.M.

Sub-Basin "A"
Q_s = 11.7

Sub-Basin "B"
Q_s = 17.1

- LEGEND**
- ➔ Drainage Direction - Major Storm
 - ➔ Drainage Direction - Minor Storm
 - Proposed Storm Water Sewer & Inlet
 - Proposed Valley Gutter
 - +1350.0 Proposed Top Curb Elev.
 - Drainage Basin Boundary
 - - - Drainage Sub-basin Boundary
 - ⊙ Node Identification Point
 - Golf Course Alignment

SCALE 1" = 100'



Revised 2.14.69
1700