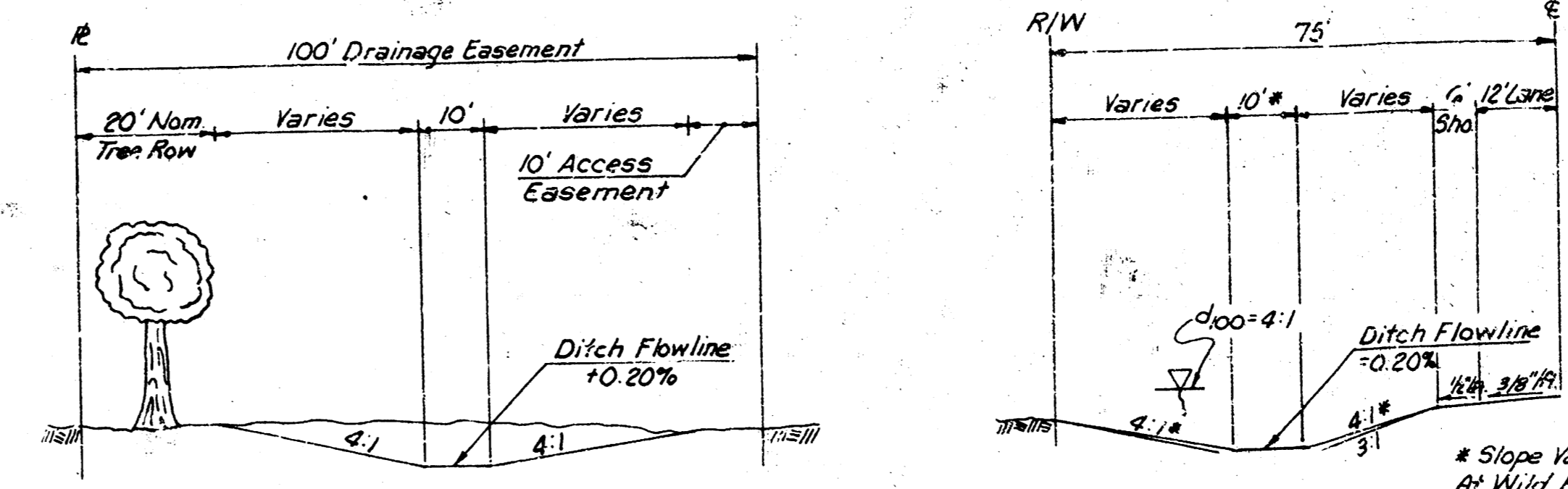


| POND DATA | | | | STREET DATA | | | INLET DATA | | | | |
|-----------|-------------|-------------|-----------------|------------------|-------------|-------------|-------------|------------|------------|---------------|--------|
| NO. | STATIC POOL | 100-YR. DIS | 100-YR. STORAGE | NAME | STREET TYPE | CURB TYPE | WALK GRADE | NODE | INLET TYPE | NO. OF INLETS | LENGTH |
| 1 | 1319.6 | 1323.9 | 18.7 AC-FT* | Reflection Road | Collector | 6 5/8" Std. | T.C. + 0.4' | 120 | 1A Curb | 2 | 10' |
| 2 | 1319.6 | 1323.9 | 18.7 AC-FT* | Reflection Ct. | Local | 3 5/8" No11 | T.C. + 0.7' | 140 | 1A Curb | 2 | 10' |
| 3 | 1319.6 | 1323.0 | 14.5 AC-FT | Wild Rose | Collector | 6 5/8" Std. | T.C. + 0.7' | 410 | 1A Curb | 1 | 10' |
| | | | | Quail Run Circle | Local | 6 5/8" Std. | T.C. + 0.7' | 420 | 1A Curb | 1 | 10' |
| | | | | Wild Rose Cts. | Local | 3 5/8" No11 | T.C. + 0.7' | All Others | 1A Curb | 1 | 5' |

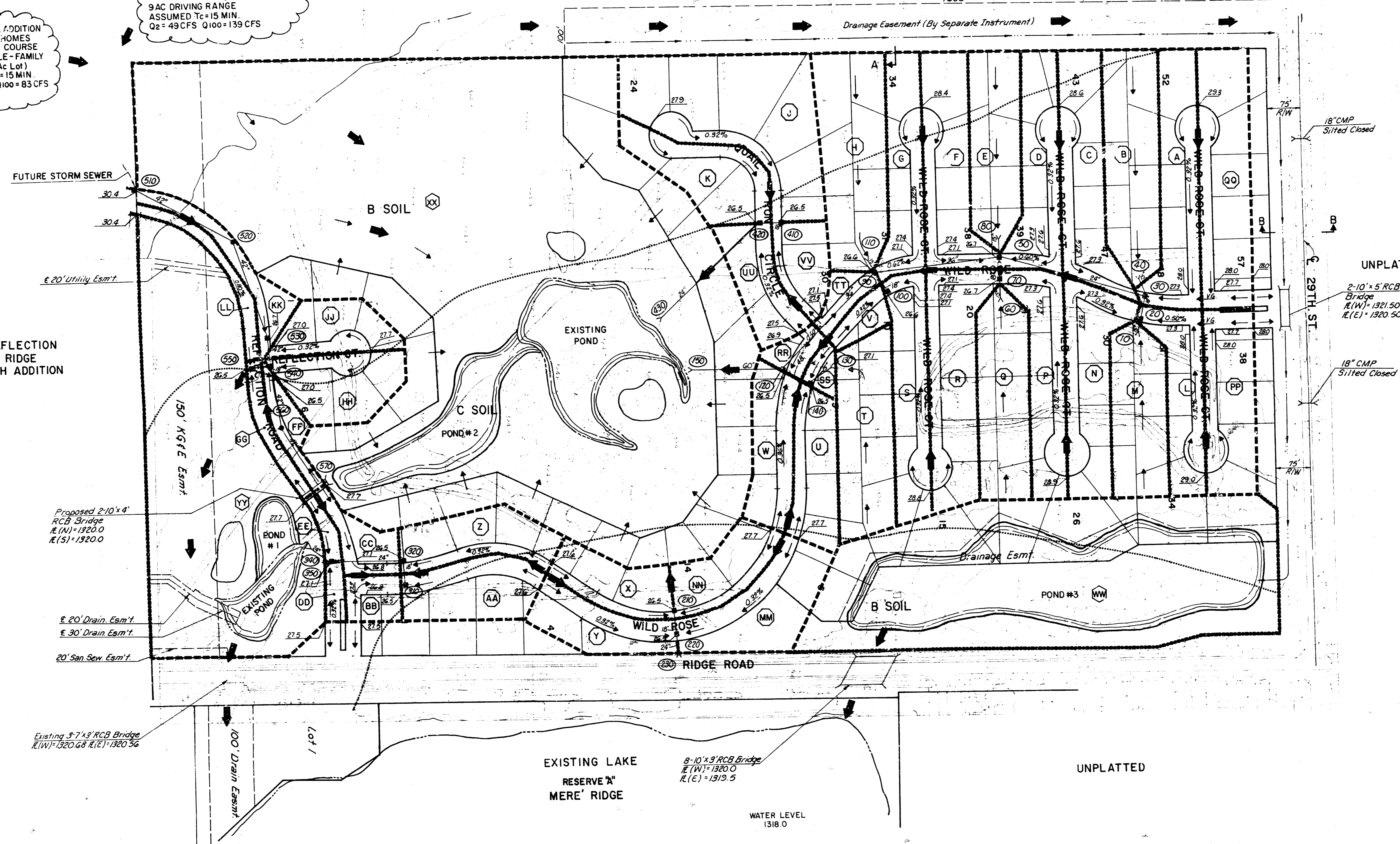
*COMBINED STORAGE OF POND NOS. 1 & 2



FUTURE 7 ADDITION
8.2 AC TOWN HOMES
9.7 AC GOLF COURSE
2.2 AC SINGLE-FAMILY (1/4 Ac Lot)
ASSUMED Tc = 15 MIN
Q2 = 29 CFS Q100 = 83 CFS

FUTURE S 1/2 W 1/2 NE 1/4
2.5 AC SINGLE FAMILY RESIDENTIAL (1/4 Ac Lot)
9 AC DRIVING RANGE
ASSUMED Tc = 15 MIN
Q2 = 49 CFS Q100 = 139 CFS

REFLECTION RIDGE 4TH ADDITION

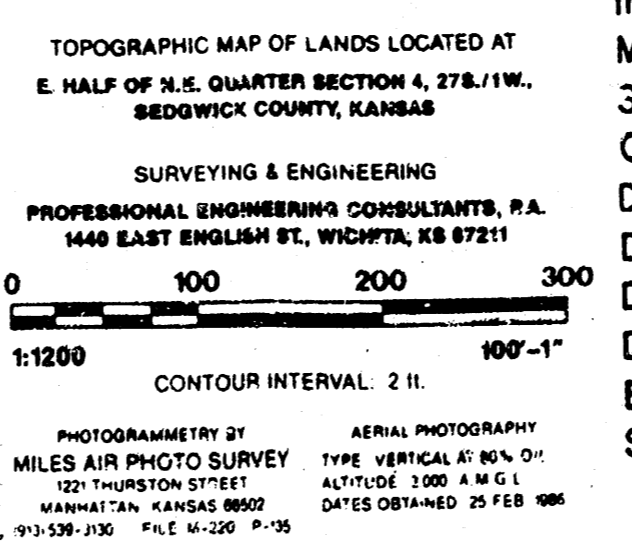


EXISTING LAKE
RESERVE "A"
MERE' RIDGE

WATER LEVEL
1318.0

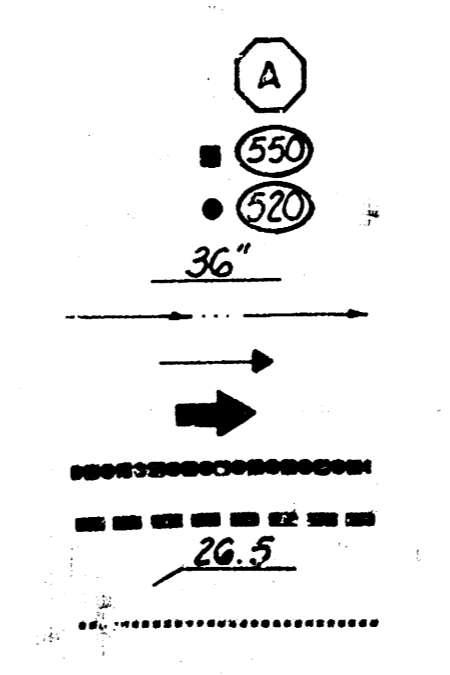
BENCH MARKS

- B.M. - E. CORNER RIDGE ROAD AND 21ST STREET NORTH
R.R. SPIKE IN S.W. SIDE OF POWER POLE 75' NORTH
AND 6" EAST OF THE CENTERLINE OF RIDGE ROAD AND
21ST STREET NORTH
ELEV. = 1330.42 M.S.L. = 143.30 CITY DATUM
- B.M. - CHIS'D.N.E. CORNER 3-7'x3' RIB BRIDGE ON RIDGE
ROAD 175' NORTH OF S.E. COR. NE 1/4 SEC. 4-T. 27S-R.1W.
ELEV. = 1325.64 MSL
- B.M. - R.R. SPIKE IN E. FACE POWER POLE 50' NORTH AND
80' EAST OF E. RIDGE RD. & 29TH STREET NORTH.
ELEV. = 1327.25 MSL



LEGEND

- Drainage Area Identification
- Inlet w/Node Identification
- Manhole w/Node Identification
- Storm Sewer w/Size
- Open Channel
- Drainage Direction (Minor Storm)
- Drainage Direction (Major Storm)
- Drainage Crest (Minor Storm)
- Drainage Crest (Major Storm)
- Elevation (Top of Curb)
- SCS Hydrologic Soil Group Boundary



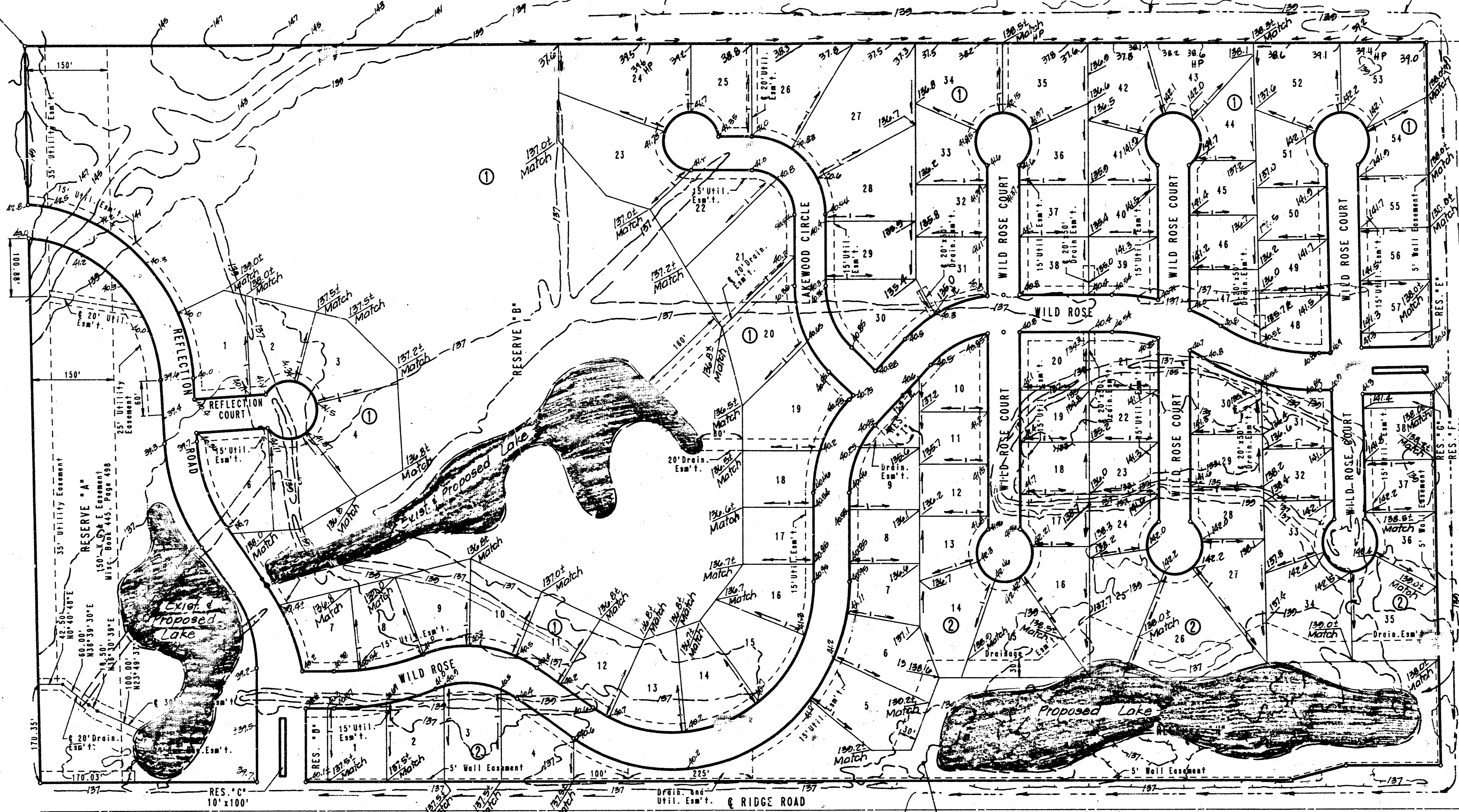
| No. | Revision | By | Date |
|--|----------|---------|----------|
| REFLECTION RIDGE 6TH ADDITION DRAINAGE PLAN | | | |
| PROFESSIONAL ENGINEERING CONSULTANTS, P.A. ENGINEERS WICHITA, KANSAS | | | |
| Designed by | M.B. | Job No. | 89463 |
| Drawn by | V.L.W. | Date | Jan 1991 |

**APPROVED
DRAINAGE PLAN**

REFLECTION RIDGE 6TH ADDITION TO WICHITA, SEDGWICK COUNTY, KANSAS

S.W. COR. E. 1/2, N.E. 1/4
SEC. 4, T27S, R1W
OF THE 6TH P.M.

N.W. COR. E. 1/2, N.E. 1/4
SEC. 4, T27S, R1W
OF THE 6TH P.M.



SCALE: 1"=100'
 ○ = IRON SET
 U.E. = UTILITY EASEMENT
 B.S.L. = BUILDING SETBACK LINE
 C.A.C. = COMPLETE ACCESS CONTROL
 B.M. - CHISELED "O" N.E. COR. 3-7-23' RIB
 BRIDGE ON RIDGE ROAD 175' NORTH OF
 S.E. COR. N.E. 1/4 SEC. 4, T27S, R1W
 ELEV. = 1335.44 M.S.L.
 ELEV. = 1335.52 CITY DATUM
 MINIMUM PAD ELEVATIONS (LOWEST OPENING):
 ALL LOTS = 1327.5 M.S.L.
 = 140.38 City Datum.

Note: Elevations and contours
shown are based on
City of Wichita Datum.

S.E. COR. N.E. 1/4
SEC. 4, T27S, R1W
OF THE 6TH P.M.

N.E. COR. N.E. 1/4
SEC. 4, T27S, R1W
OF THE 6TH P.M.

**APPROVED
DRAINAGE PLAN**

Revised 11/10/91
5/17/91

170'H
DETAILED DRAINAGE PLAN