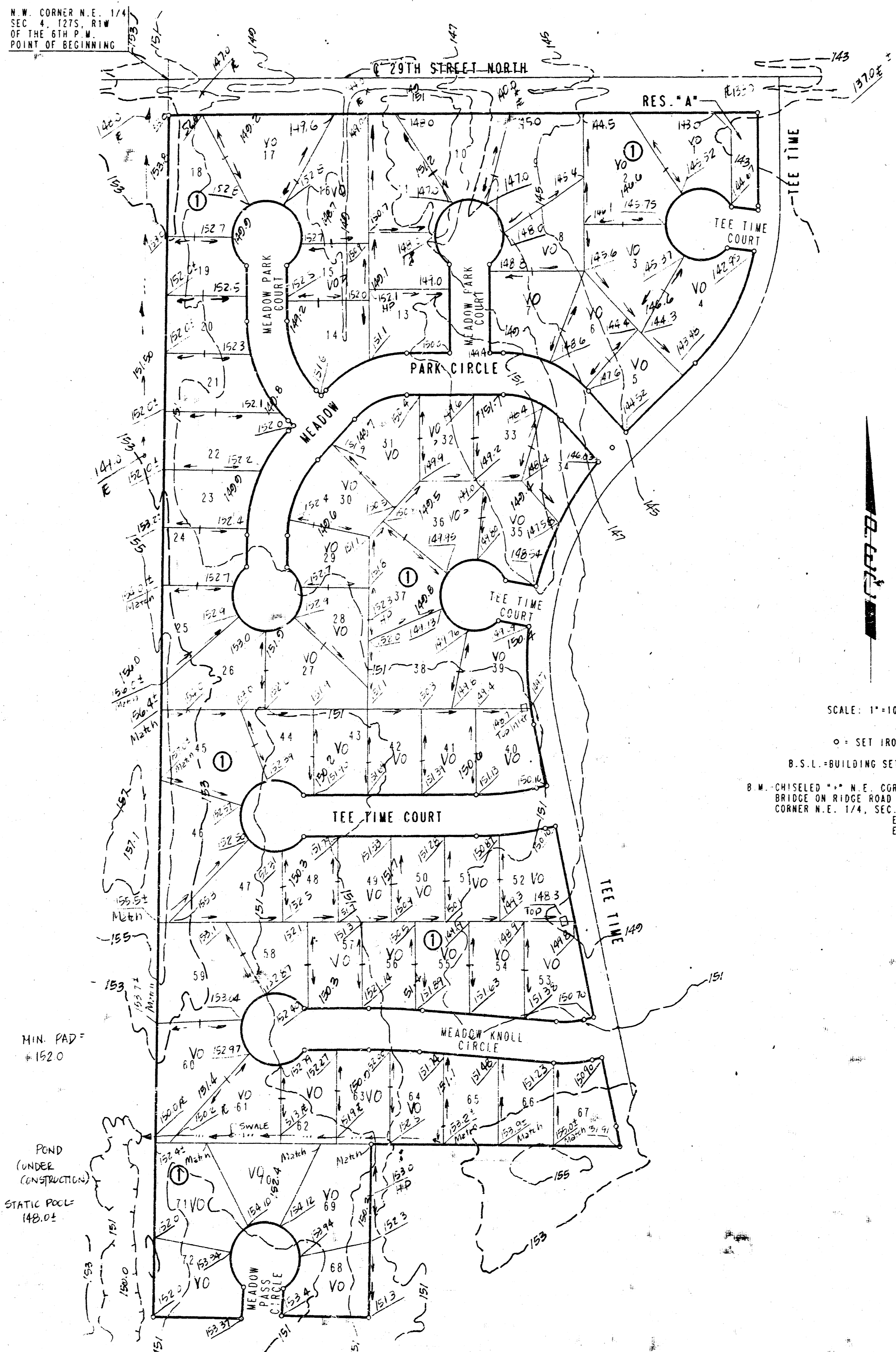


REFLECTION RIDGE 8TH ADDITION TO WICHITA SEDGWICK, COUNTY, KANSAS

N.W. CORNER N.E. 1/4
SEC. 4, T27S, R1W
OF THE 6TH 2ND
POINT OF BEGINNING



SCALE: 1"=100'

○ = SET IRON

B.S.L. - BUILDING SETBACK LINE

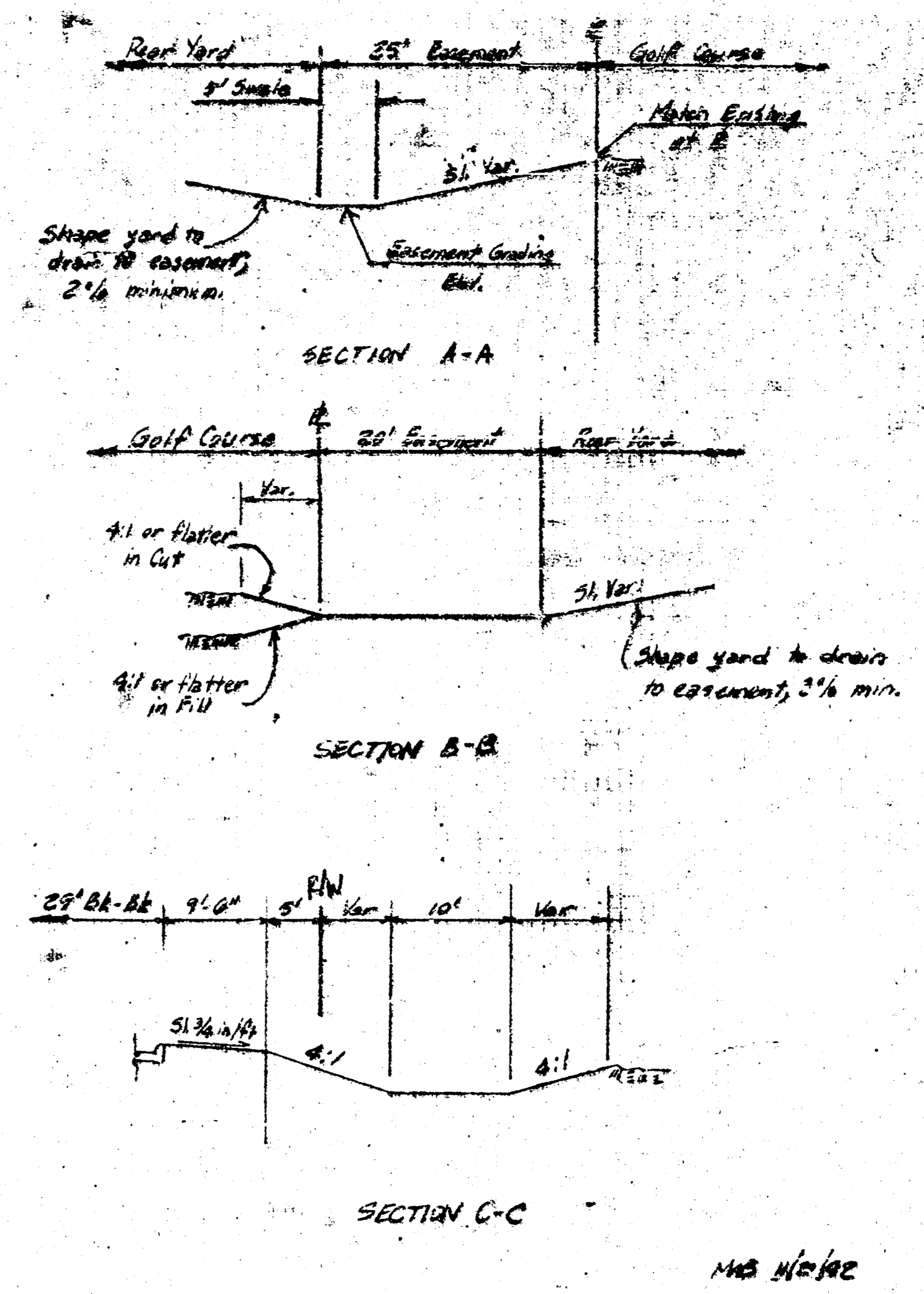
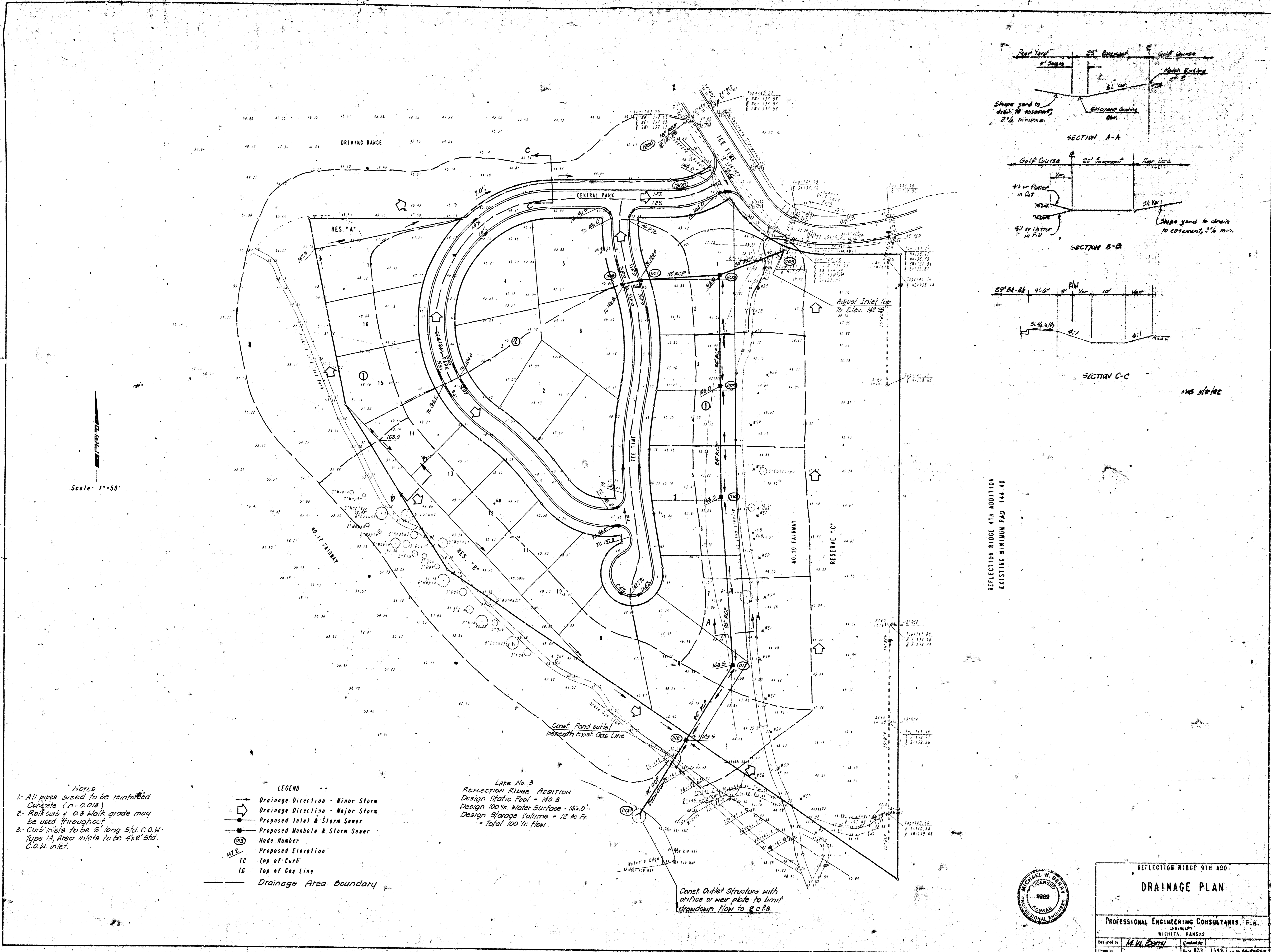
B.M. CHISELED 'x' N.E. CORNER 3-7'x3' RCB
BRIDGE ON RIDGE ROAD 175 FEET NORTH OF S.E.
CORNER N.E. 1/4, SEC. 4, T27S, R1W
ELEV. +1325.64 M.S.L.
ELEV. +138.46 CITY DATUM

APPROVED
DRAINAGE PLAN

170 "J"

DETAILED DRAINAGE PLAN

6/22/92



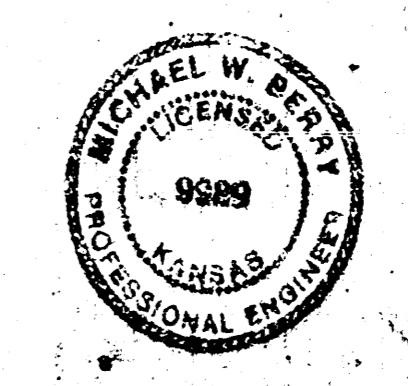
Notes
 1- All pipes sized to be reinforced Concrete (n=0.013)
 2- Roll curb & 0.3 Walk grade may be used throughout
 3- Curb inlets to be 5' long Std. C.O.W. Type 1A, Area inlets to be 4'x2' Std. C.O.W. inlet.

- LEGEND
- Drainage Direction - Minor Storm
 - Drainage Direction - Major Storm
 - Proposed Inlet & Storm Sewer
 - Proposed Manhole & Storm Sewer
 - ① Node Number
 - Proposed Elevation
 - TC Top of Curb
 - TG Top of Gas Line
 - Drainage Area Boundary

Lake No. 3
 REFLECTION RIDGE ADDITION
 Design Static Pool = 40.8
 Design 100% Water Surface = 42.0
 Design Storage Volume = 12 Ac-Ft.
 = Total 100 Yr. flow

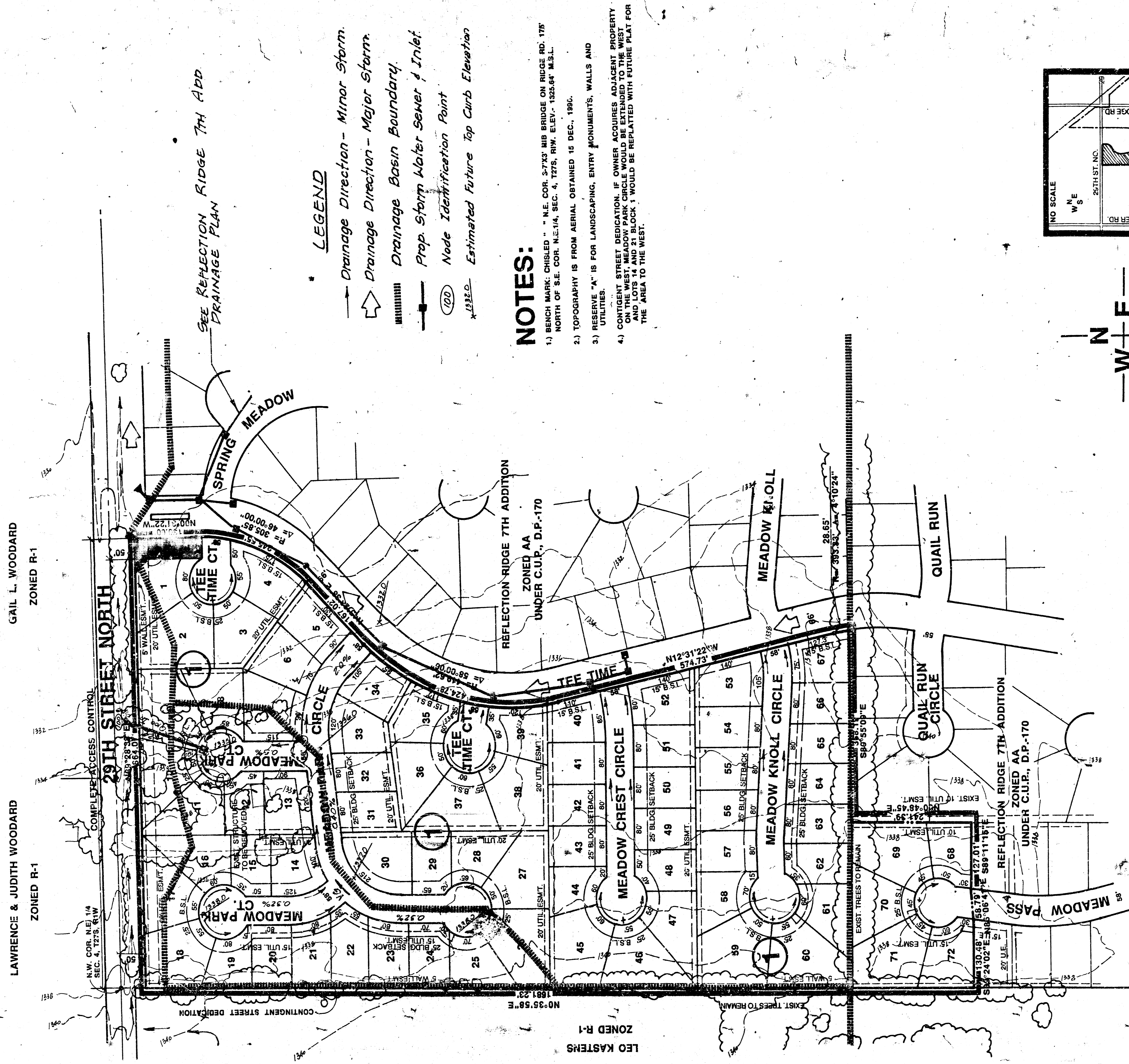
Const. Outlet Structures with orifice or weir plate to limit drawdown flow to 2 c.f.s.

REFLECTION RIDGE 4TH ADDITION
 EXISTING MINIMUM PAD 144.40



REFLECTION RIDGE 9TH ADD.
DRAINAGE PLAN
 PROFESSIONAL ENGINEERING CONSULTANTS, P.C.A.
 ENGINEERS
 WICHITA, KANSAS
 Designed by: M.W. Deery
 Drawn by: M.W. Deery
 Date: MAY 1, 1992 1:00 PM 92-1058E

1701

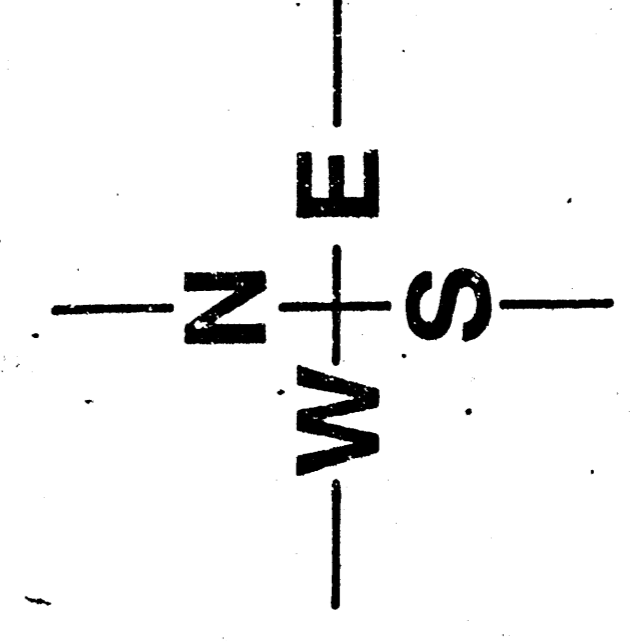
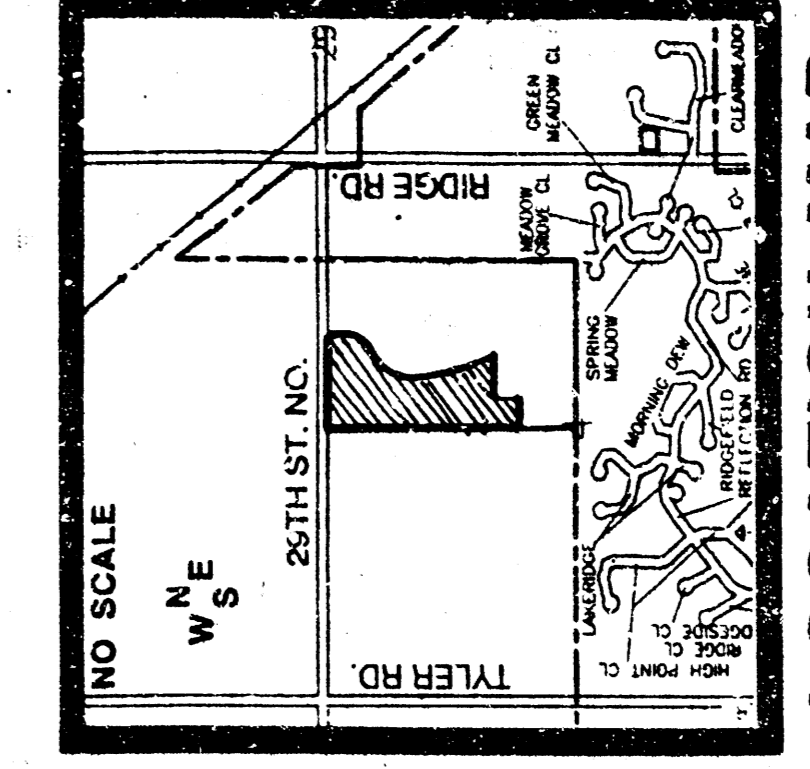


SEE REFLECTION RIDGE 7TH ADD DRAINAGE PLAN

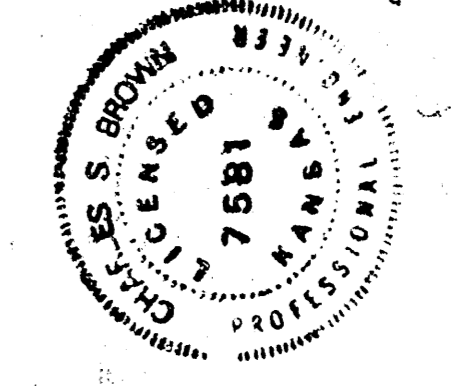
- LEGEND**
- Drainage Direction - Minor Storm.
 - ⇨ Drainage Direction - Major Storm.
 - ▬ Drainage Basin Boundary.
 - Prop. Storm Water Sewer & Inlet.
 - Node Identification Point.
 - x 1332.0 Estimated Future Top Curb Elevation.

NOTES:

- 1.) BENCH MARK: CHIBLED " " N.E. COR. 2-7X3" MB BRIDGE ON RIDGE RD. 178 NORTH OF S.E. COR. N.E.1/4, SEC. 4, T27S, R1W, ELEV.: 1325.64' M.S.L.
- 2.) TOPOGRAPHY IS FROM AERIAL, OBTAINED 16 DEC., 1990.
- 3.) RESERVE "A" IS FOR LANDSCAPING, ENTRY MONUMENTS, WALLS AND UTILITIES.
- 4.) CONTIGENT STREET DEDICATION. IF OWNER ACQUIRES ADJACENT PROPERTY ON LOTS 14 AND 21 BLOCK 1 WOULD BE REPLACED WITH FUTURE PLAT FOR THE AREA TO THE WEST.



SCALE: 1"=100'
CONTOUR INTERVAL= 2'

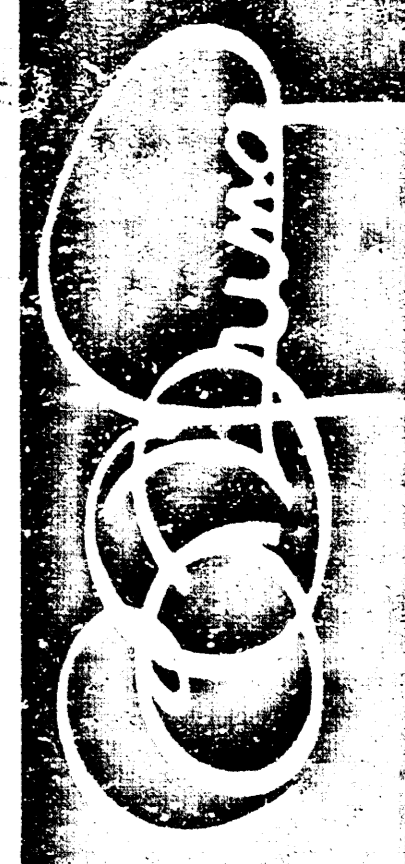


PROFESSIONAL ENGINEERING CONSULTANTS, P.A.
 ENGINEERS
 WICHITA, KANSAS
 Designed by C. S. B. Job No. _____
 Drawn by _____ Date 1-17-92 Sheet 1 of 1

DRAINAGE PLAN

REFLECTION RIDGE 8TH ADD.

OWNER: REFLECTION RIDGE INC., 7926 W. 21ST STREET NORTH, WICHITA, KANSAS 67212 PH: 316-721-2153



BILL G. YUNG DESIGN
 4612 E. 20TH STREET NORTH
 WICHITA, KS. 67220
 316-663-5667

DATE
REV.

SHEET TITLE
PRELIMINARY PLAT

PROJECT
REFLECTION RIDGE 8TH ADDITION

SHEET
OF