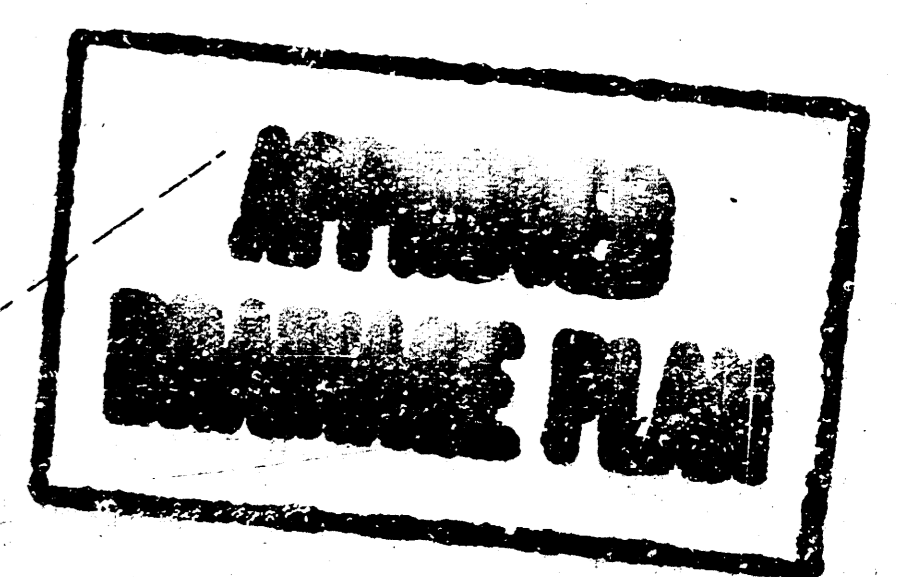
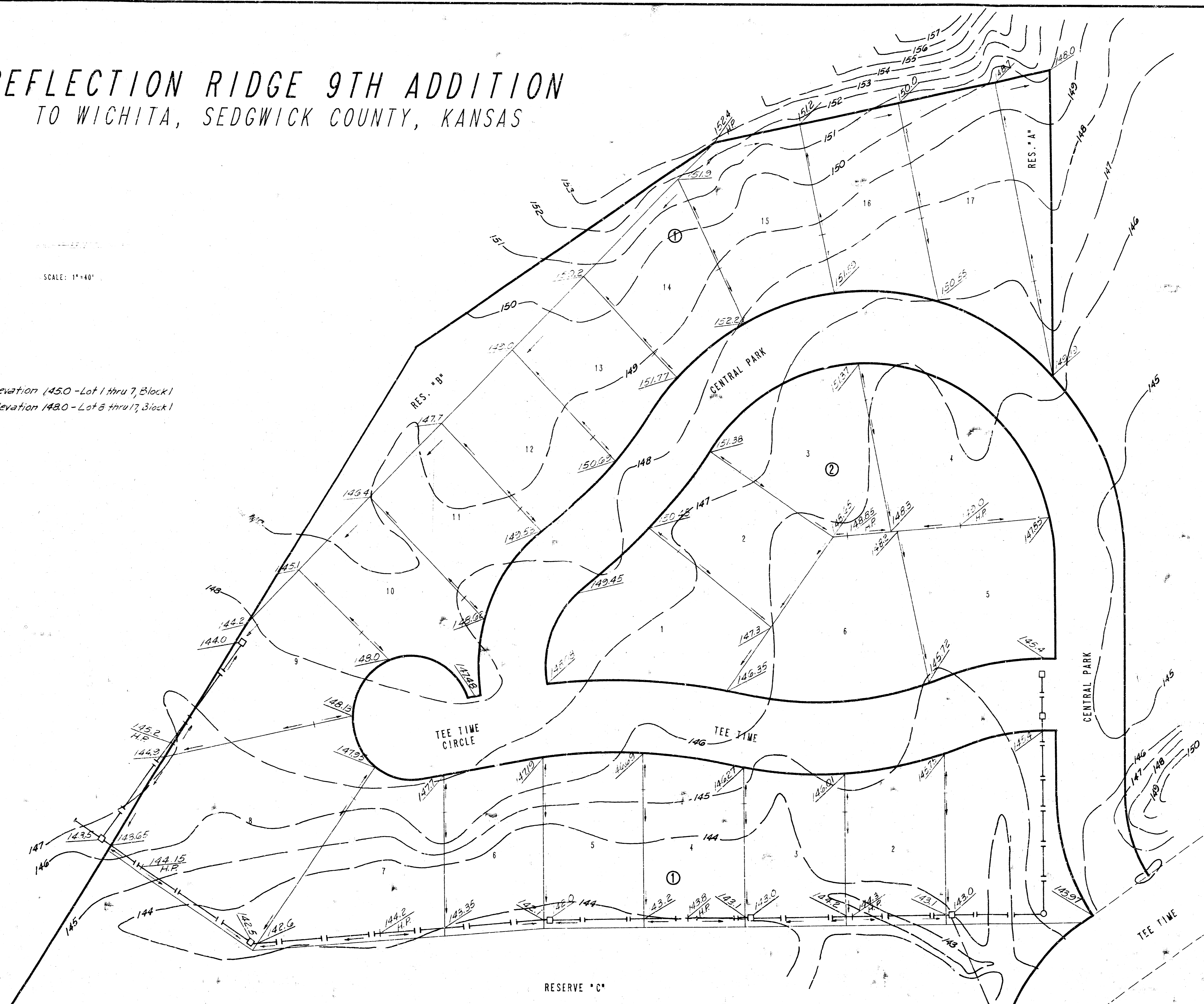


# REFLECTION RIDGE 9TH ADDITION TO WICHITA, SEDGWICK COUNTY, KANSAS

SCALE: 1"=40'

Min. Pad Elevation 145.0 - Lot 1 thru 7, Block 1  
Min. Pad Elevation 148.0 - Lot 8 thru 17, Block 1



DETAILED DRAINAGE PLAN