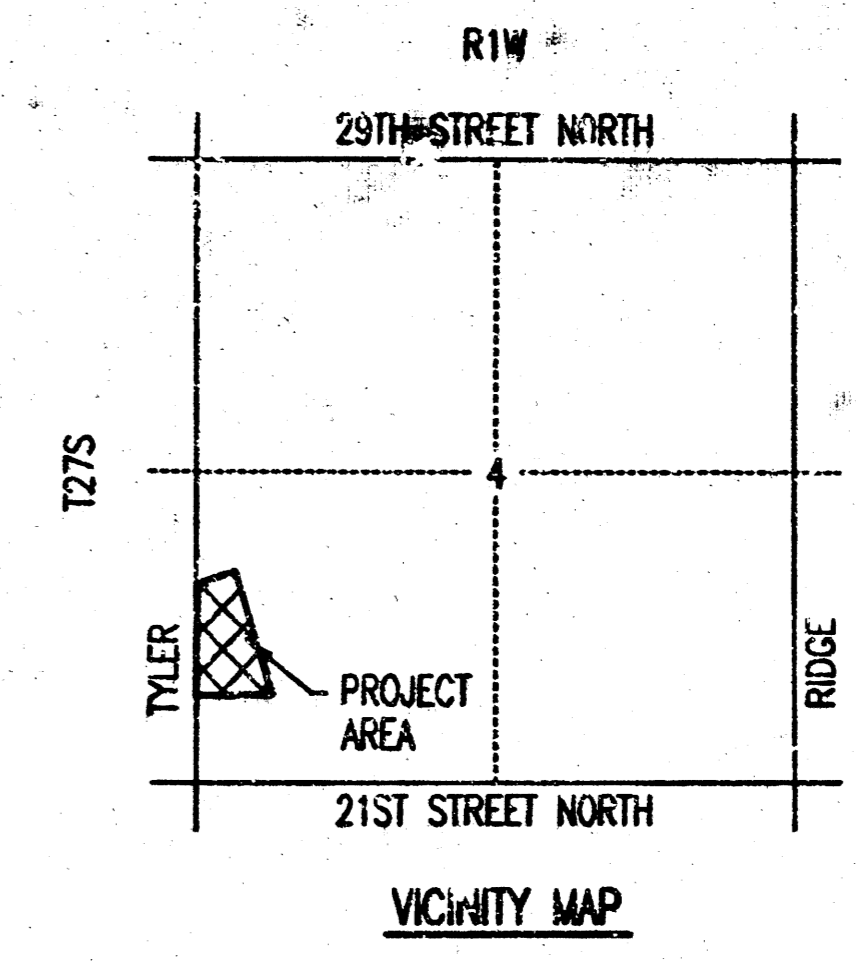


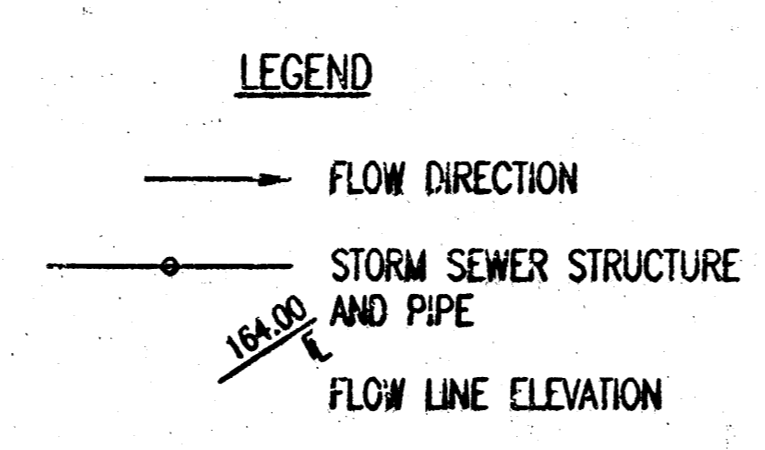
DRAINAGE PLAN REFLECTION RIDGE WEST AN ADDITION TO WICHITA, SEDGWICK COUNTY, KANSAS



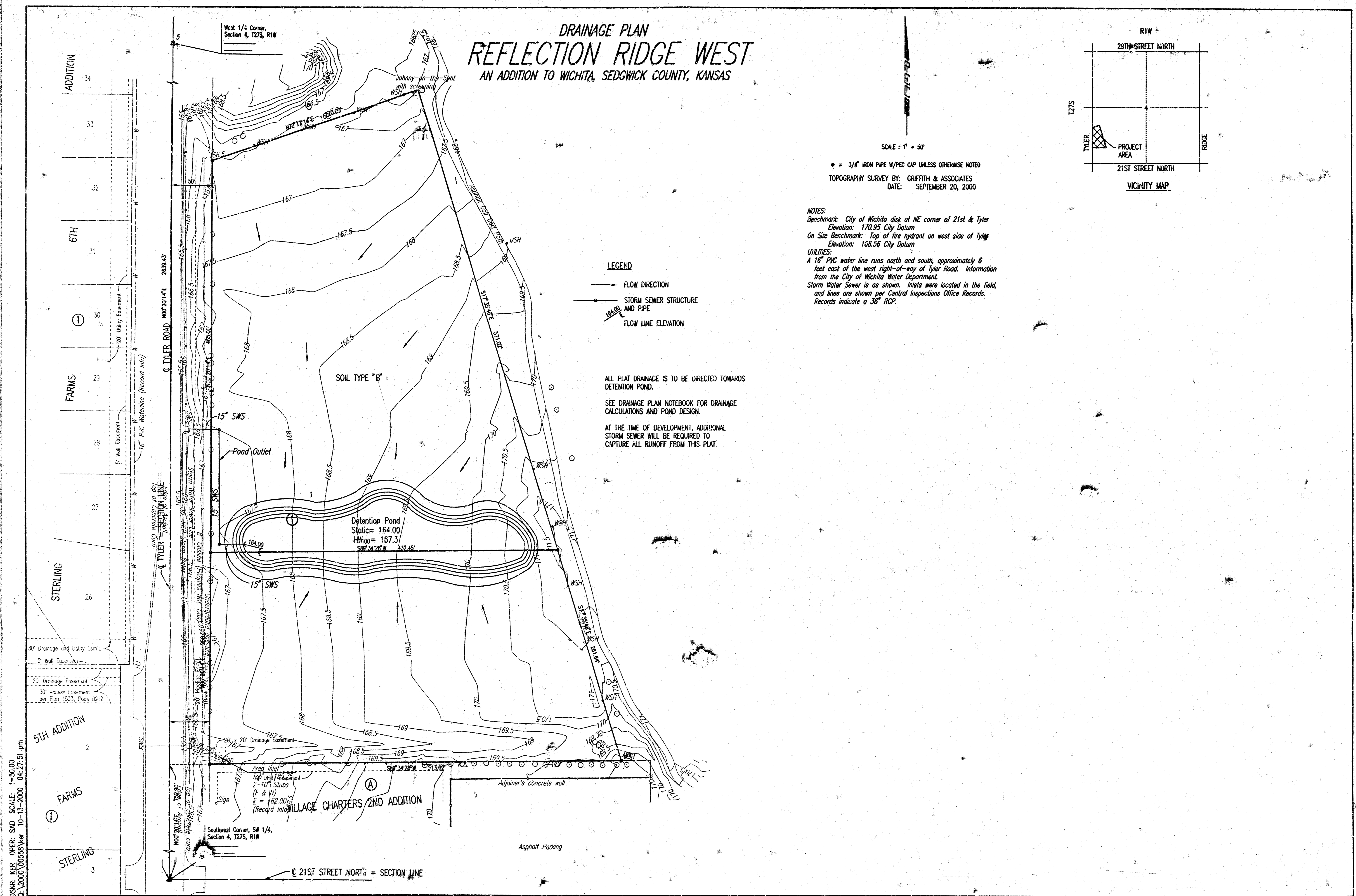
SCALE: 1" = 50'

• = 3/4" IRON PIPE W/PEC CAP UNLESS OTHERWISE NOTED
 TOPOGRAPHY SURVEY BY: GRIFFITH & ASSOCIATES
 DATE: SEPTEMBER 20, 2000

NOTES:
 Benchmark: City of Wichita disk at NE corner of 21st & Tyler
 Elevation: 170.95 City Datum
 On Site Benchmark: Top of fire hydrant on west side of Tyler
 Elevation: 168.56 City Datum
UTILITIES:
 A 16" PVC water line runs north and south, approximately 6 feet east of the west right-of-way of Tyler Road. Information from the City of Wichita Water Department.
 Storm Water Sewer is as shown. Intels were located in the field, and lines are shown per Central Inspections Office Records. Records indicate a 36" RCP.



ALL PLAT DRAINAGE IS TO BE DIRECTED TOWARDS DETENTION POND.
 SEE DRAINAGE PLAN NOTEBOOK FOR DRAINAGE CALCULATIONS AND POND DESIGN.
 AT THE TIME OF DEVELOPMENT, ADDITIONAL STORM SEWER WILL BE REQUIRED TO CAPTURE ALL RUNOFF FROM THIS PLAT.



DSNR, KER OPER. SAD SCALE: 1"=50.00
 Q: 12000, 06558 Ver 10-15-2000 04:27:51 pm