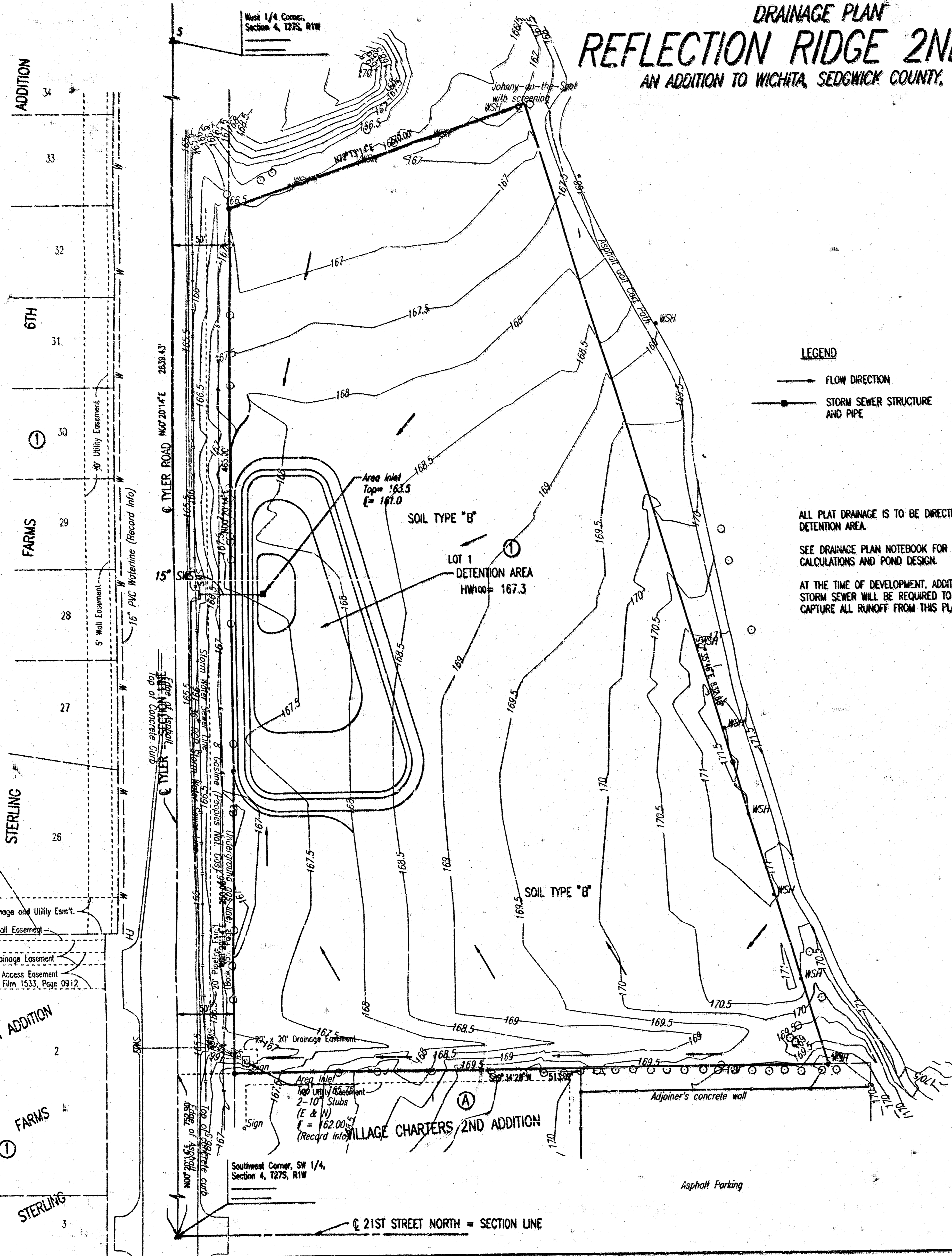


DRAINAGE PLAN

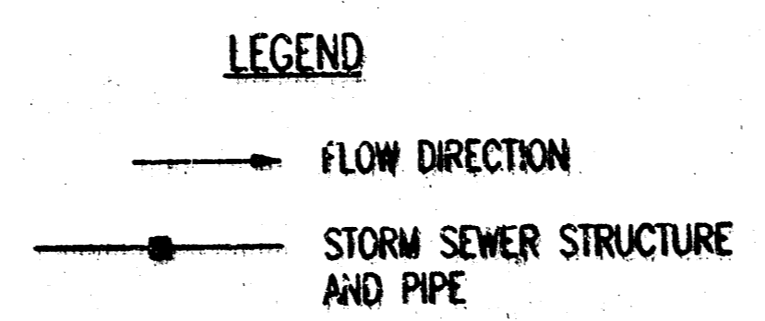
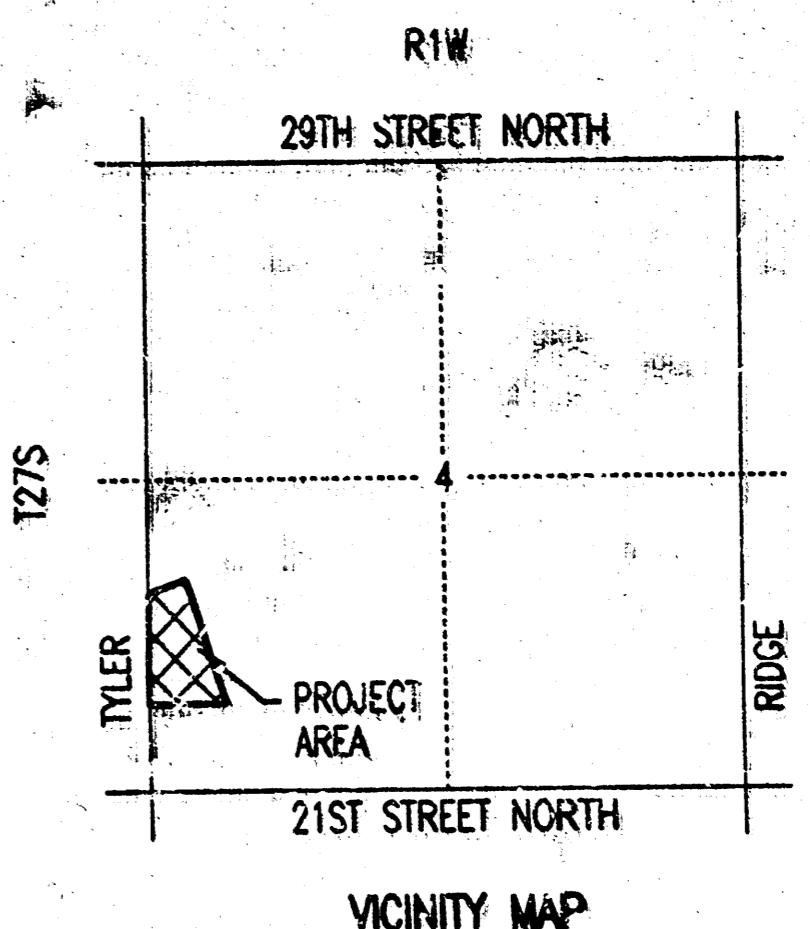
REFLECTION RIDGE 2ND WEST

AN ADDITION TO WICHITA, SEDGWICK COUNTY, KANSAS



SCALE: 1" = 50'

● = 3/4" IRON PIPE W/PEC CAP UNLESS OTHERWISE NOTED
 TOPOGRAPHY SURVEY BY: GRIFFITH & ASSOCIATES
 DATE: SEPTEMBER 20, 2000



ALL PLAT DRAINAGE IS TO BE DIRECTED TOWARDS DETENTION AREA.

SEE DRAINAGE PLAN NOTEBOOK FOR DRAINAGE CALCULATIONS AND POND DESIGN.

AT THE TIME OF DEVELOPMENT, ADDITIONAL STORM SEWER WILL BE REQUIRED TO CAPTURE ALL RUNOFF FROM THIS PLAT.

NOTES:
 Benchmark: City of Wichita disk at NE corner of 21st & Tyler
 Elevation: 170.95 City Datum
 On Site Benchmark: Top of fire hydrant on west side of Tyler
 Elevation: 168.56 City Datum

UTILITIES:
 A 16" PVC water line runs north and south, approximately 5 feet east of the west right-of-way of Tyler Road. Information from the City of Wichita Water Department.
 Storm Water Sewer is as shown. Inlets were located in the field, and lines are shown per Central Inspections Office Records. Records indicate a 36" RCP.

DSNR, SAO, OPER, SAC SCALE: 1"=50.00
 G: 200101654 Drainage 12-17-2001 10:34:05 am

ADDITION 34
 33
 32
 6TH 31
 30
 FARMS 29
 28
 27
 STERLING 26
 25
 24
 23
 22
 21
 20
 19
 18
 17
 16
 15
 14
 13
 12
 11
 10
 9
 8
 7
 6
 5
 4
 3
 2
 1
 5TH ADDITION
 FARMS
 STERLING

West 1/4 Corner, Section 4, T27S, R1W
 Tyler Road M072014E 2839.43
 15' Setback
 16" PVC Waterline (Record Info)
 5' Wall Easement
 30' Drainage and Utility Eas't
 5' Wall Easement
 20' Drainage Easement
 30' Access Easement per Film 1533, Page 0912
 5TH ADDITION
 FARMS
 STERLING
 Southwest Corner, SW 1/4, Section 4, T27S, R1W
 21ST STREET NORTH = SECTION LINE

Johany-in-the-Spot with screening
 Area Inlet Top = 163.3 E = 167.0
 SOIL TYPE "B"
 LOT 1 DETENTION AREA HW100 = 167.3
 SOIL TYPE "B"
 SOIL TYPE "B"
 Area Inlet
 2-10" Slubs (E & W) E = 162.00 (Record Info)
 Sign
 Adjapan's concrete wall
 Asphalt Parking

168.5
 167.5
 166.5
 165.5
 164.5
 163.5
 162.5
 161.5
 160.5
 159.5
 158.5
 157.5
 156.5
 155.5
 154.5
 153.5
 152.5
 151.5
 150.5
 149.5
 148.5
 147.5
 146.5
 145.5
 144.5
 143.5
 142.5
 141.5
 140.5
 139.5
 138.5
 137.5
 136.5
 135.5
 134.5
 133.5
 132.5
 131.5
 130.5
 129.5
 128.5
 127.5
 126.5
 125.5
 124.5
 123.5
 122.5
 121.5
 120.5
 119.5
 118.5
 117.5
 116.5
 115.5
 114.5
 113.5
 112.5
 111.5
 110.5
 109.5
 108.5
 107.5
 106.5
 105.5
 104.5
 103.5
 102.5
 101.5
 100.5
 99.5
 98.5
 97.5
 96.5
 95.5
 94.5
 93.5
 92.5
 91.5
 90.5
 89.5
 88.5
 87.5
 86.5
 85.5
 84.5
 83.5
 82.5
 81.5
 80.5
 79.5
 78.5
 77.5
 76.5
 75.5
 74.5
 73.5
 72.5
 71.5
 70.5
 69.5
 68.5
 67.5
 66.5
 65.5
 64.5
 63.5
 62.5
 61.5
 60.5
 59.5
 58.5
 57.5
 56.5
 55.5
 54.5
 53.5
 52.5
 51.5
 50.5
 49.5
 48.5
 47.5
 46.5
 45.5
 44.5
 43.5
 42.5
 41.5
 40.5
 39.5
 38.5
 37.5
 36.5
 35.5
 34.5
 33.5
 32.5
 31.5
 30.5
 29.5
 28.5
 27.5
 26.5
 25.5
 24.5
 23.5
 22.5
 21.5
 20.5
 19.5
 18.5
 17.5
 16.5
 15.5
 14.5
 13.5
 12.5
 11.5
 10.5
 9.5
 8.5
 7.5
 6.5
 5.5
 4.5
 3.5
 2.5
 1.5
 0.5
 0