

DRAINAGE CONCEPT
"REISMAN ADDITION"
 Wichita, Kansas

OWNER:
 HARRY W. DICKERSON
 2924 E. DOUGLAS
 WICHITA, KANSAS 67214

SUBDIVIDER:
 MICHAEL A. REISMAN
 3243 E. MURDOCK, STE 6C0
 WICHITA, KANSAS 67208

SCALE: 1" = 30'
 0" = 12" REBAR-SET
 FILE # 901029
 23 AUGUST 1990

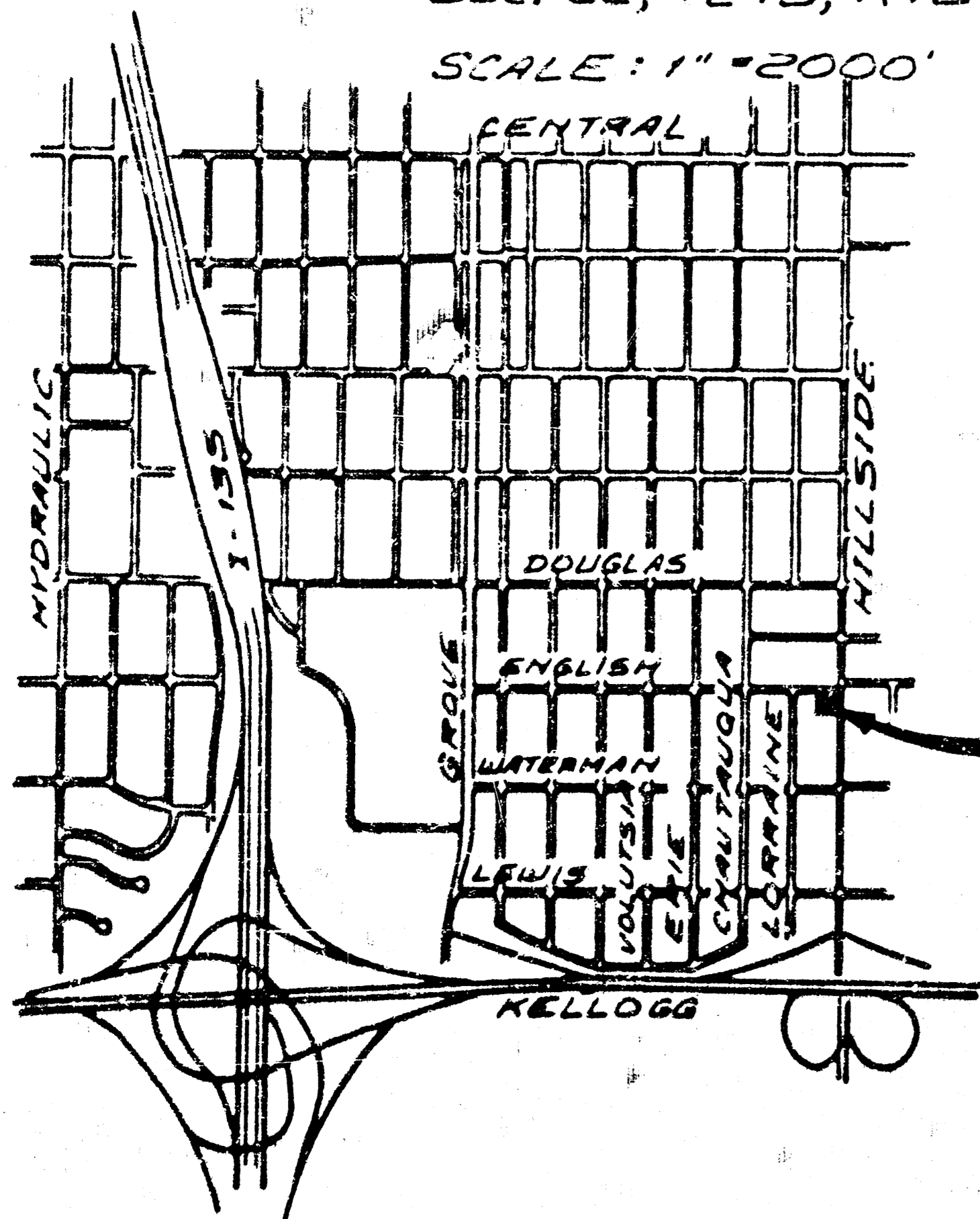
Elevations per City Datum

LEGAL DESCRIPTION:

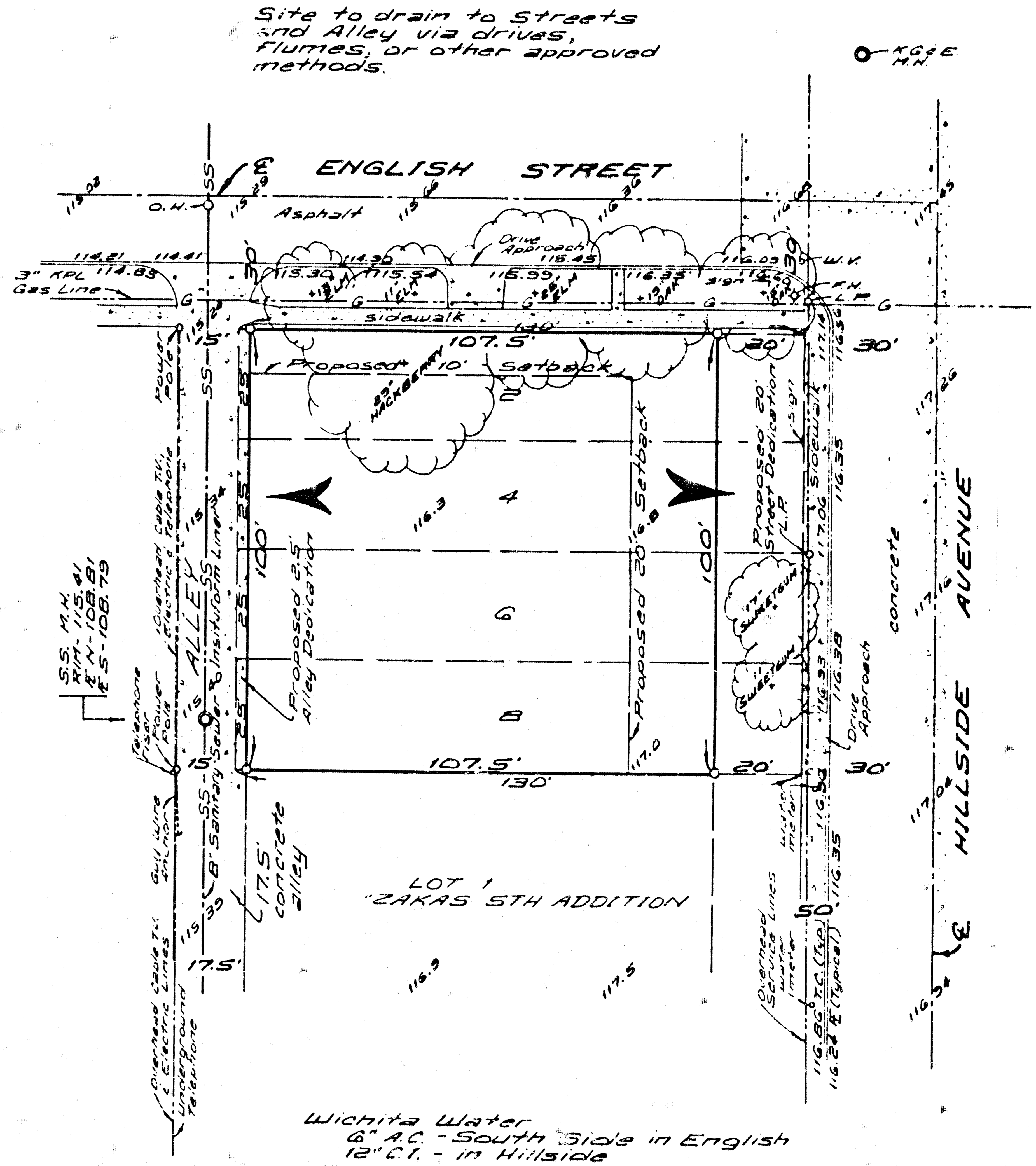
Lots 2, 4, 6, and 8, "MUELLER'S SUBDIVISION OF LOTS 1 AND 4, IN BLOCK 4, IN RICHLAND'S 2ND ADDITION", to Wichita, Kansas.

LOCATION MAP
 SEC. 22, T27S, R1E

SCALE: 1" = 2000'



Proposed
 "REISMAN
 ADDITION"



Site to drain to Streets and Alley via drives, flumes, or other approved methods.

Wichita Water
 6" A.C. - South Side in English
 12" C.I. - in Hillside