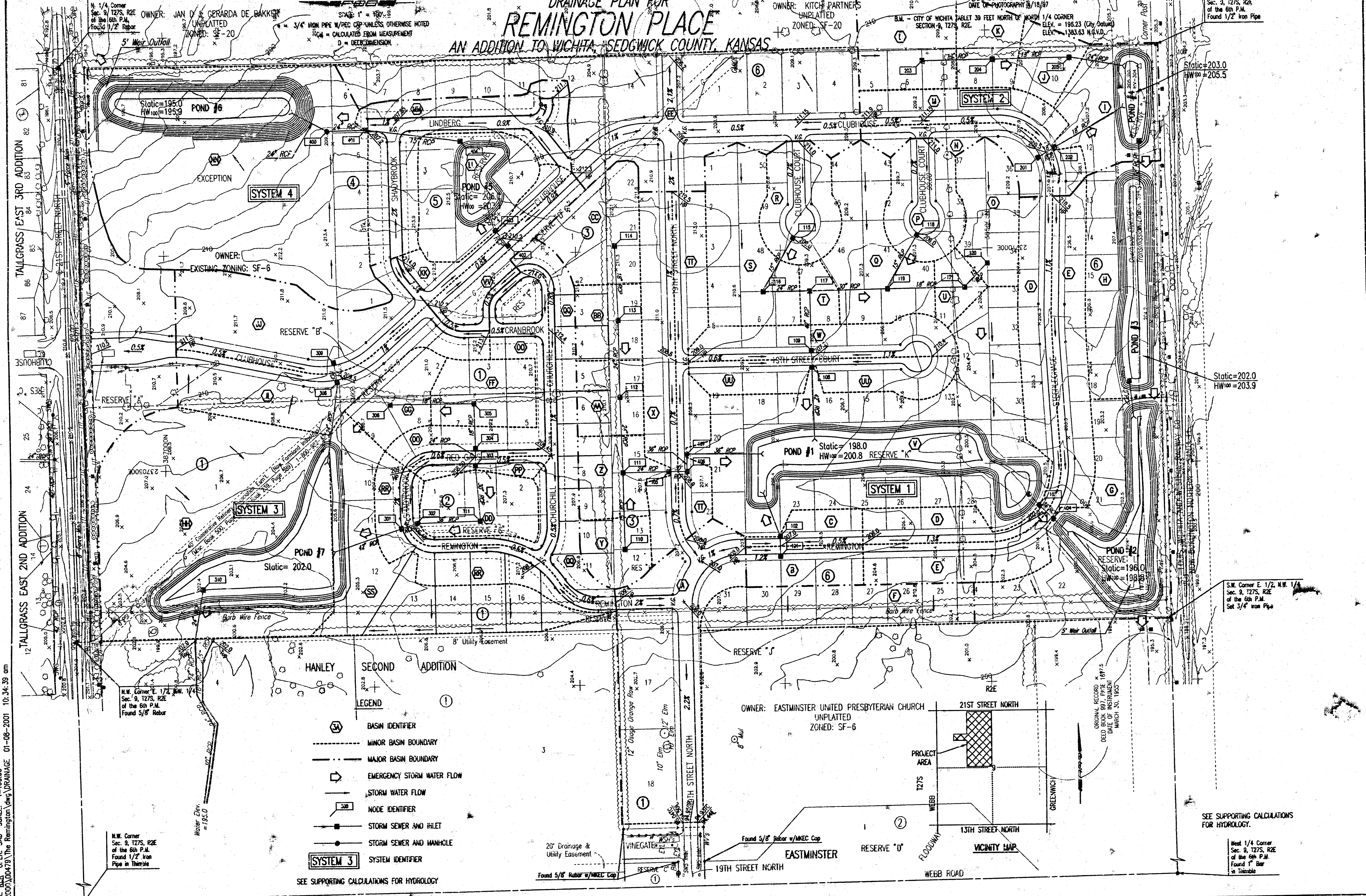
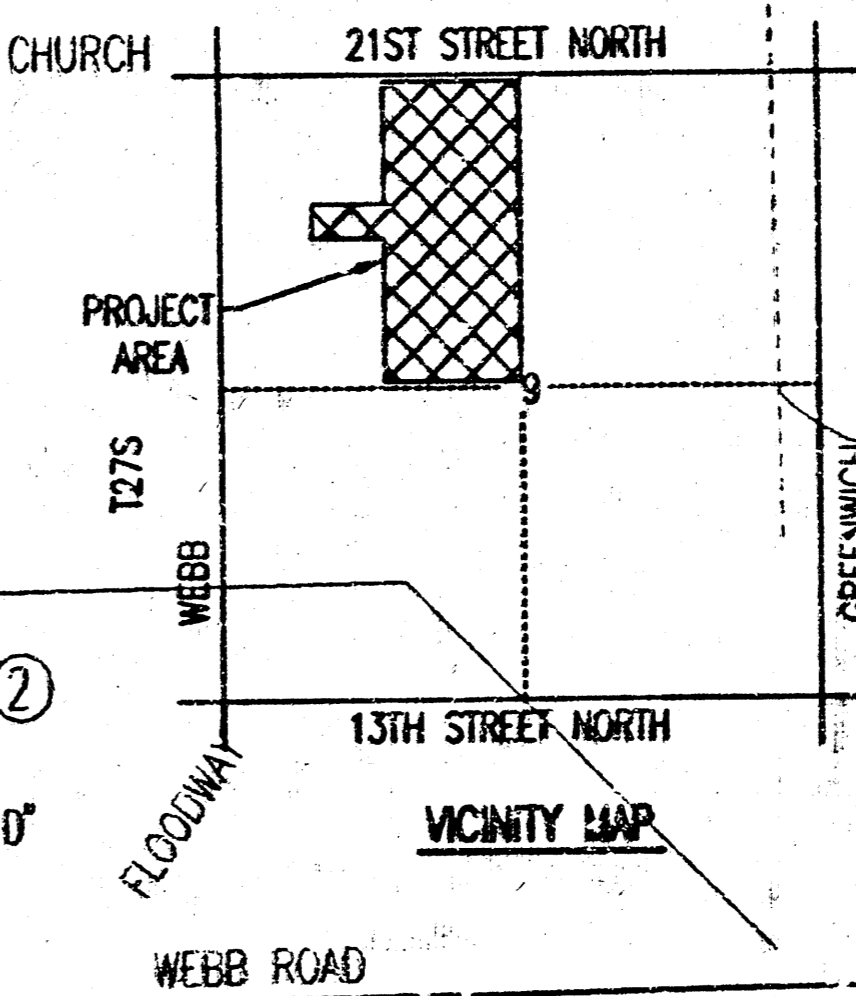


DRAINAGE PLAN FOR REMINGTON PLACE AN ADDITION TO WICHITA, SEDGWICK COUNTY, KANSAS



DSNR: KCR OPER. SAD SCALE: 1"=100.00
 G: 2000/00479 The Remington Divg DRAINAGE 01-08-2001 10:34:39 am

- LEGEND**
- 34 BASIN IDENTIFIER
 - MINOR BASIN BOUNDARY
 - MAJOR BASIN BOUNDARY
 - EMERGENCY STORM WATER FLOW
 - STORM WATER FLOW
 - NODE IDENTIFIER
 - STORM SEWER AND INLET
 - STORM SEWER AND MANHOLE
 - SYSTEM IDENTIFIER
- SEE SUPPORTING CALCULATIONS FOR HYDROLOGY



N. 1/4 Corner
 Sec. 9, T27S, R2E
 of the 6th P.M.
 Found 1/2" Rebar
 ZONED: SF-20
 OWNER: JAN D. & GERARDA DE BAKKER
 UNPLATTED

OWNER: KITCH PARTNERS
 UNPLATTED
 ZONED: SF-20

Center
 Sec. 3, T27S, R2E
 of the 6th P.M.
 Found 1/2" Iron Pipe

N.W. Corner
 Sec. 9, T27S, R2E
 of the 6th P.M.
 Found 5/8" Rebar

OWNER: EASTMINSTER UNITED PRESBYTERIAN CHURCH
 UNPLATTED
 ZONED: SF-6

ORIGINAL RECORD
 DEED OF INSTRUMENT
 MARCH 30, 1955

SEE SUPPORTING CALCULATIONS FOR HYDROLOGY.

West 1/4 Corner
 Sec. 9, T27S, R2E
 of the 6th P.M.
 Found 1" Bar
 in Trench