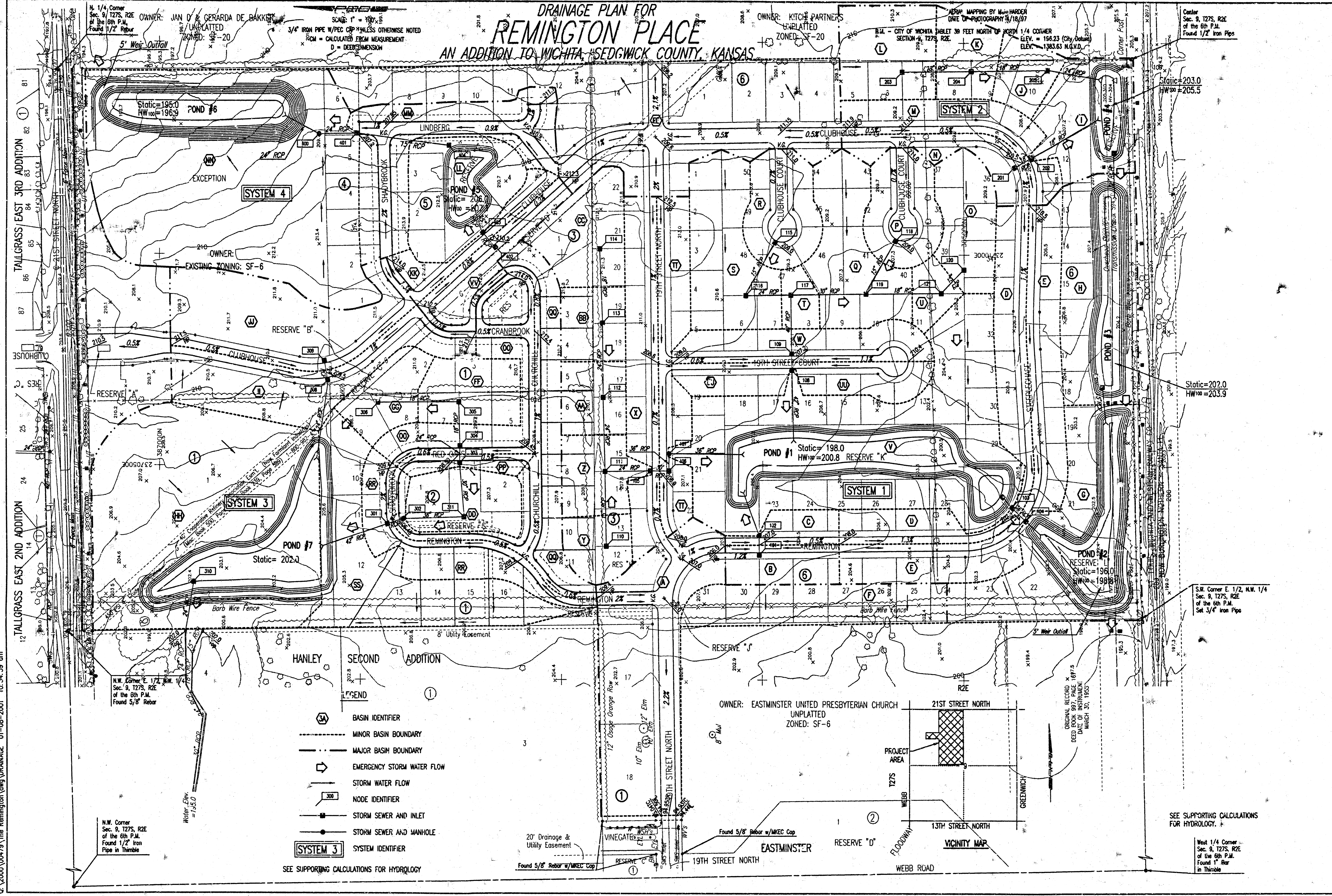


DSNR: KBR OPER. SAD SCALE: 1"=100.00
 Q: 2000 00479 The Remington Drainage 01-08-2001 10:34:39 am

DRAINAGE PLAN FOR REMINGTON PLACE AN ADDITION TO WICHITA, SEDGWICK COUNTY, KANSAS



N. 1/4 Corner
 Sec. 9, T27S, R2E
 of the 6th P.M.
 Found 1/2" Rebar
 OWNER: JAN O' GERARDA DE BAKKIST
 UNPLATTED
 ZONED: SF-20

OWNER: KITCH PARTNERS
 UNPLATTED
 ZONED: SF-20

Center
 Sec. 9, T27S, R2E
 of the 6th P.M.
 Found 1/2" Iron Pipe

N.W. Corner E. 1/2, N.W. 1/4
 Sec. 9, T27S, R2E
 of the 6th P.M.
 Found 5/8" Rebar

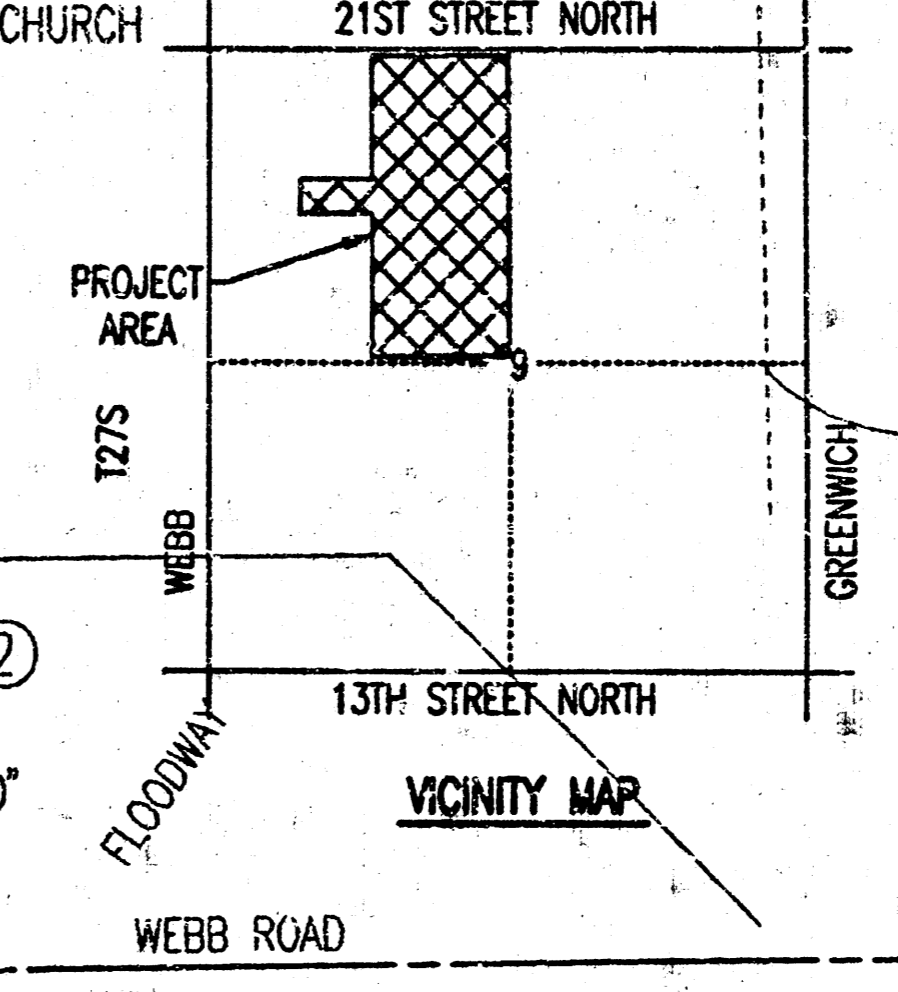
S.W. Corner E. 1/2, N.W. 1/4
 Sec. 9, T27S, R2E
 of the 6th P.M.
 Set 3/4" Iron Pipe

- BASIN IDENTIFIER
- MINOR BASIN BOUNDARY
- MAJOR BASIN BOUNDARY
- EMERGENCY STORM WATER FLOW
- STORM WATER FLOW
- NODE IDENTIFIER
- STORM SEWER AND INLET
- STORM SEWER AND MANHOLE
- SYSTEM IDENTIFIER

SEE SUPPORTING CALCULATIONS FOR HYDROLOGY

SEE SUPPORTING CALCULATIONS FOR HYDROLOGY

West 1/4 Corner
 Sec. 9, T27S, R2E
 of the 6th P.M.
 Found 1" Bar
 in Thimble



ORIGINAL RECORD
 DEED BOOK 10715
 DATE OF INSTRUMENT
 MARCH 30, 1955

20' Drainage & Utility Easement
 Found 5/8" Rebar w/MKEC Cap