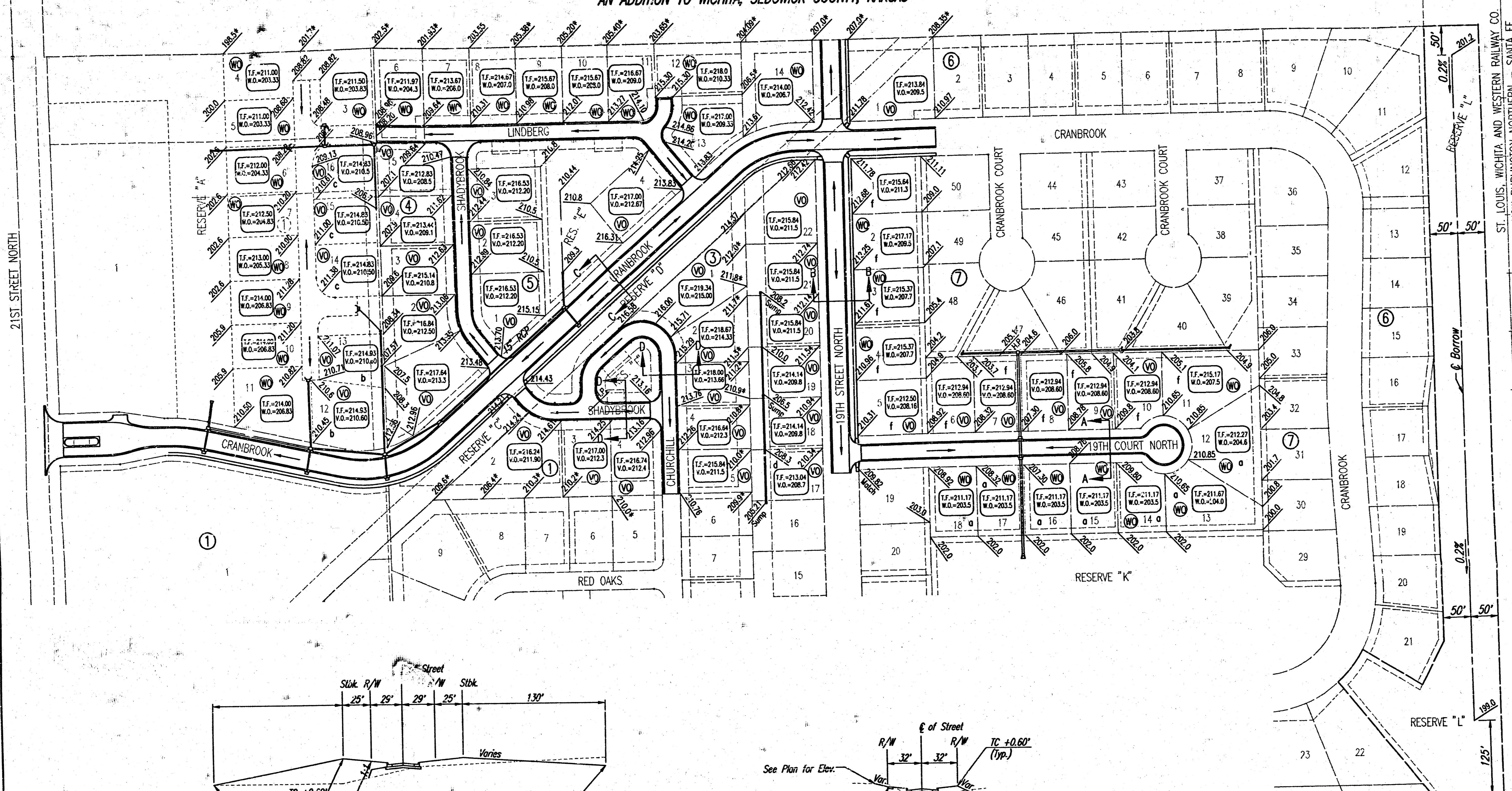


REMINGTON PLACE
AN ADDITION TO WICHITA, SEDGWICK COUNTY, KANSAS

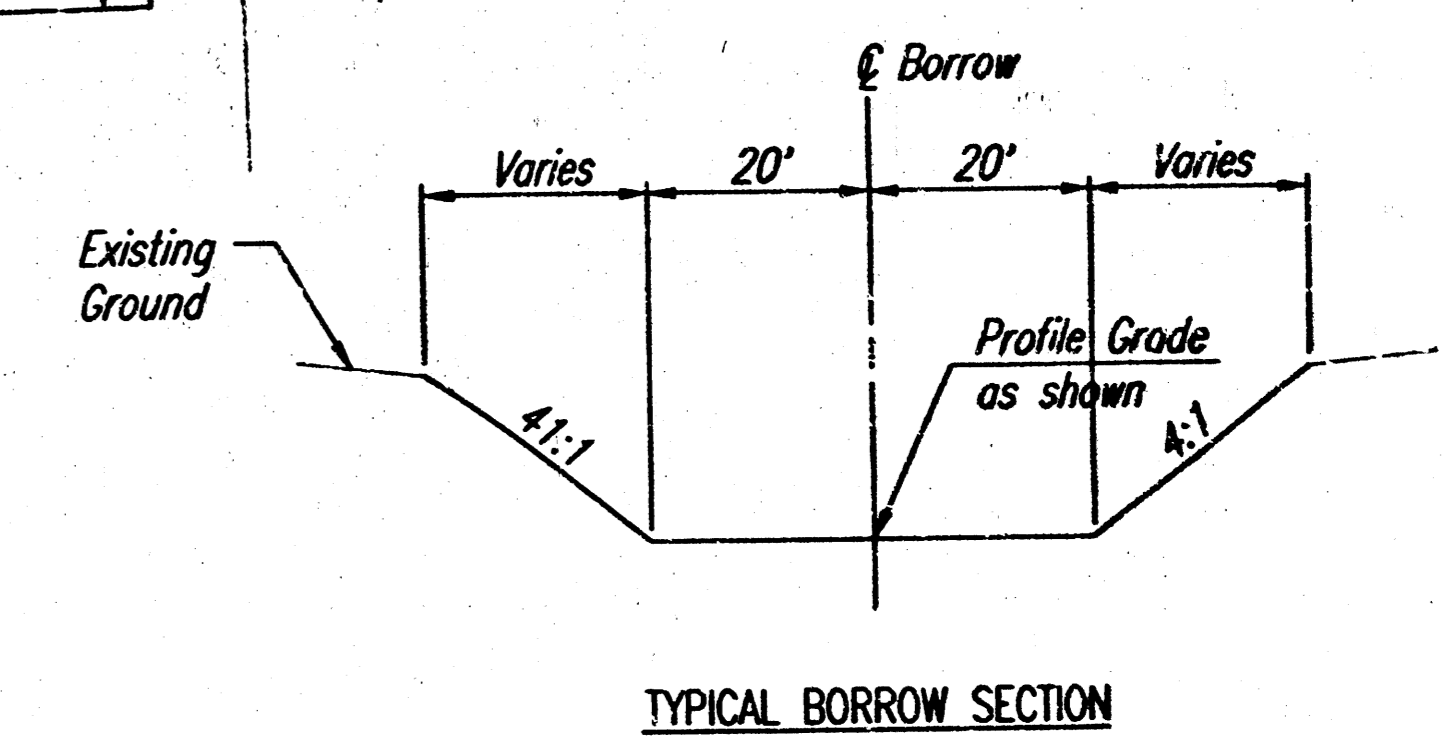
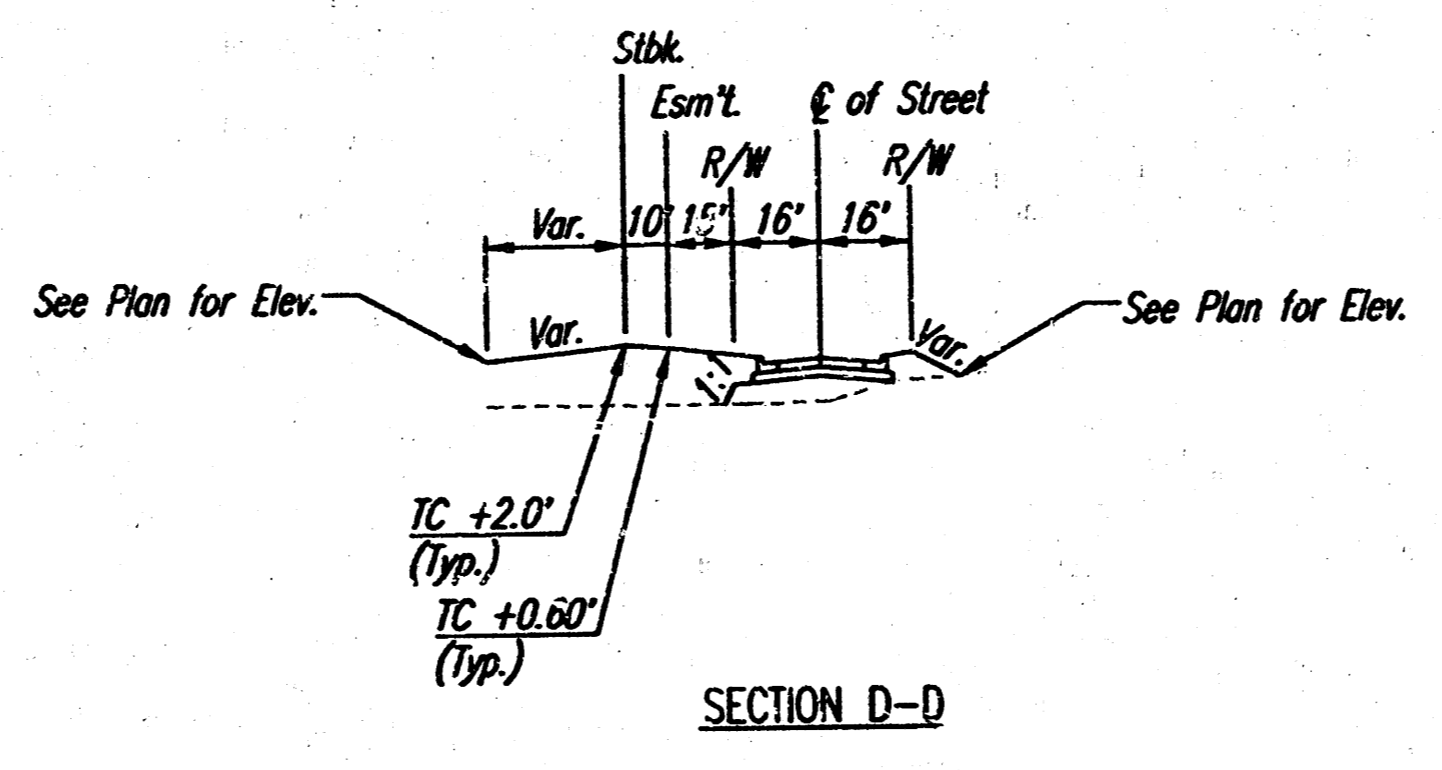
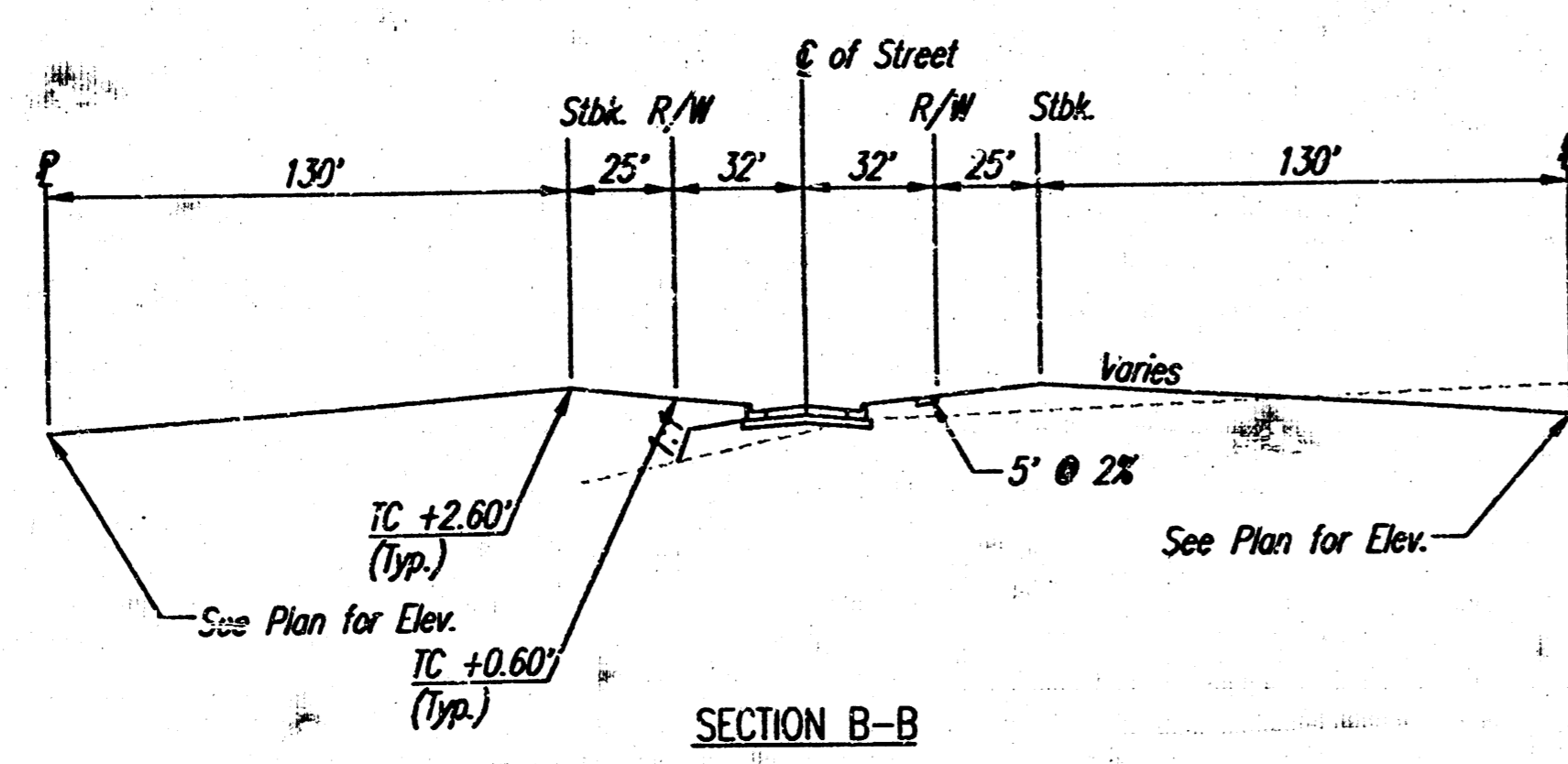
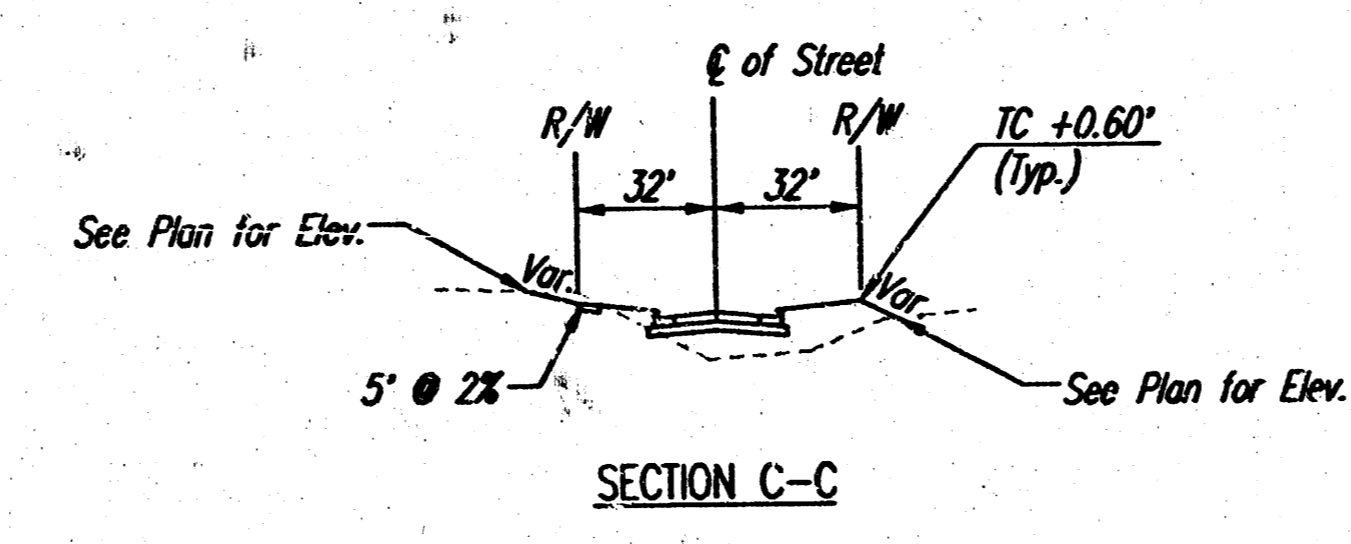
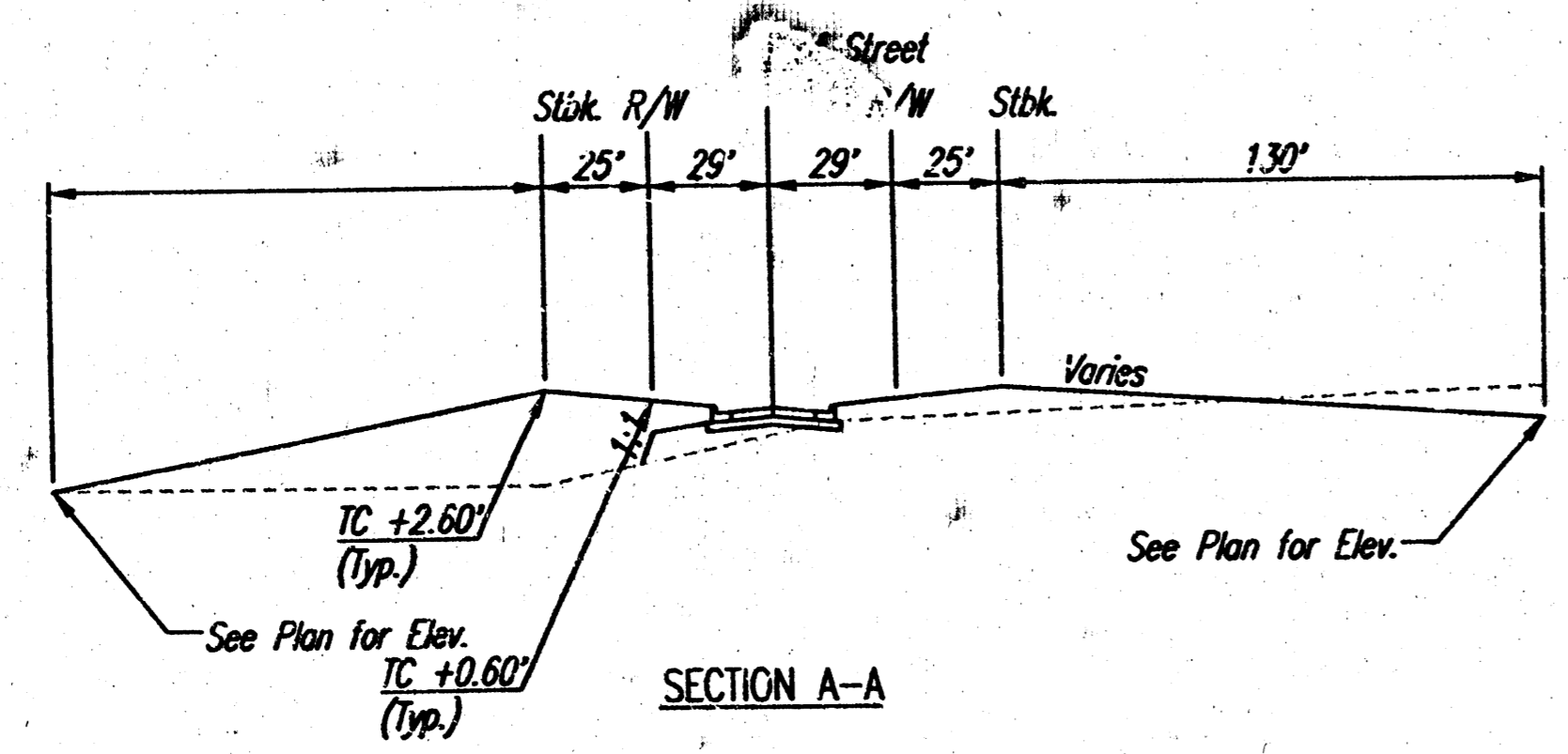
SCALE: 1" = 100'



PROJECT NO.	SHEET NO.	TOTAL SHEETS
472-83376	30	50

- a MINIMUM OPENING= 203.5
- b MINIMUM OPENING= 210.6
- c MINIMUM OPENING= 210.5
- d MINIMUM OPENING= 208.7
- f MINIMUM OPENING= 207.5

- (X) STD. BASEMENT
- (V) VIEW-OUT BASEMENT
- (W) WALK-OUT BASEMENT
- * MATCH EXISTING



**APPROVED
DRAINAGE PLAN**

REMINGTON PLACE

REVISED DEC 2002
REMINGTON PLACE - PHASE 2
FOUR CORNER LOT GRADING

Professional Engineering Consultants, P.A.
308 S. TOPICKA - WICHITA, KANSAS 67202
316-262-2691 • FAX 316-262-3003

Designed by	BER	Checked by	
Drawn by	SAW	Date	DEC., 2002
		Job No.	02398

DSNR, S&D, OPER. SAW SCALE: 1"=100.00
01/2002/02398/000/4CORNER 04-08-2003 05:14:09 pm