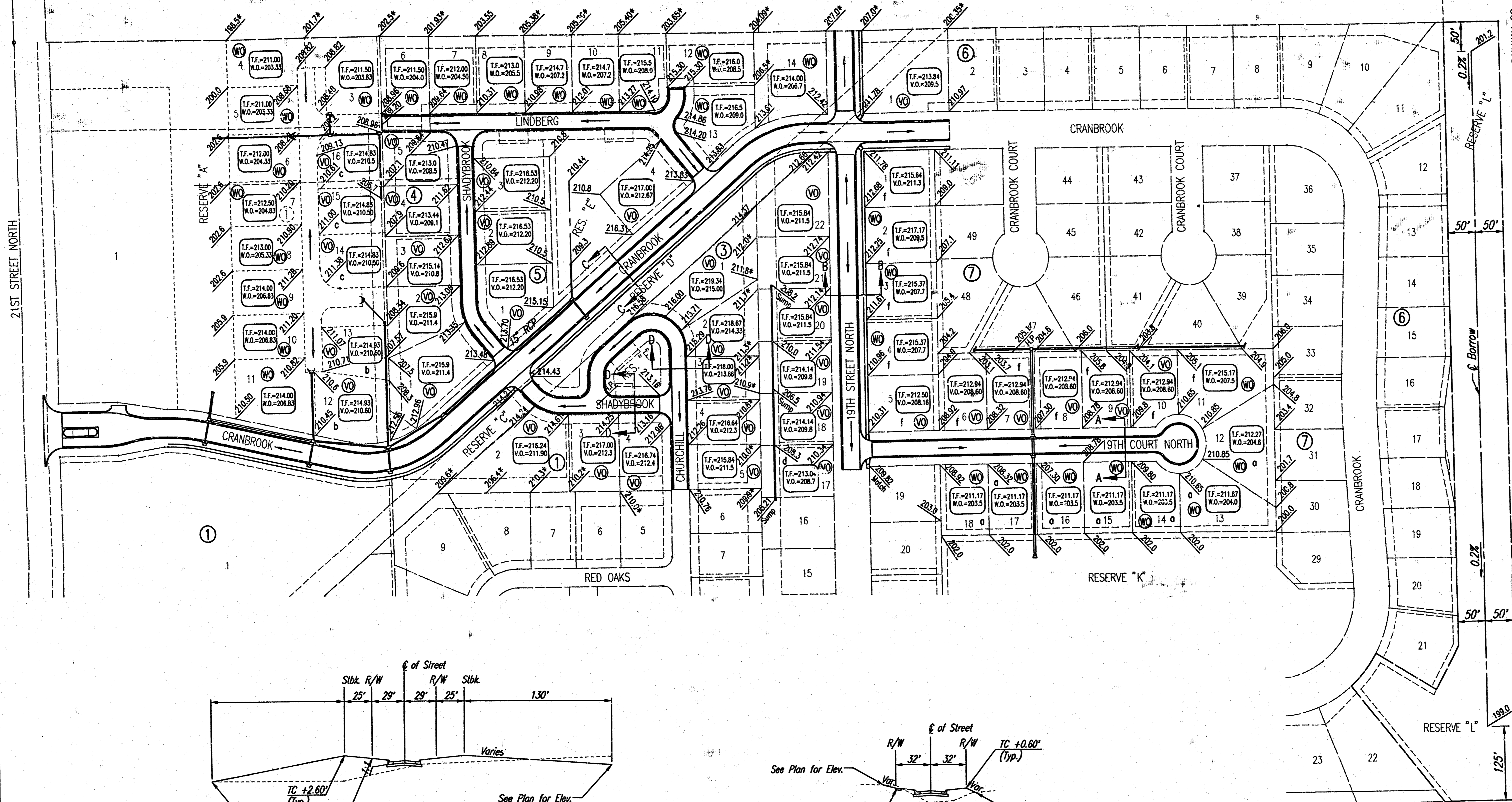


REMINGTON PLACE
AN ADDITION TO WICHITA, SEDGWICK COUNTY, KANSAS

SCALE: 1" = 100'

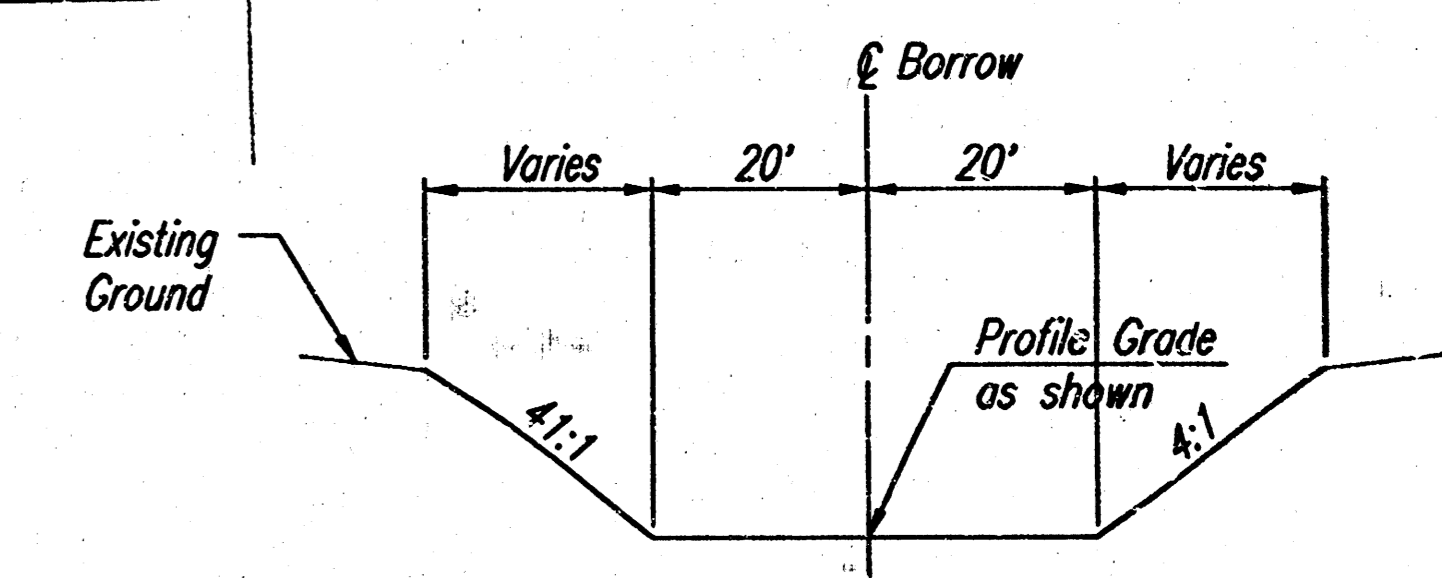
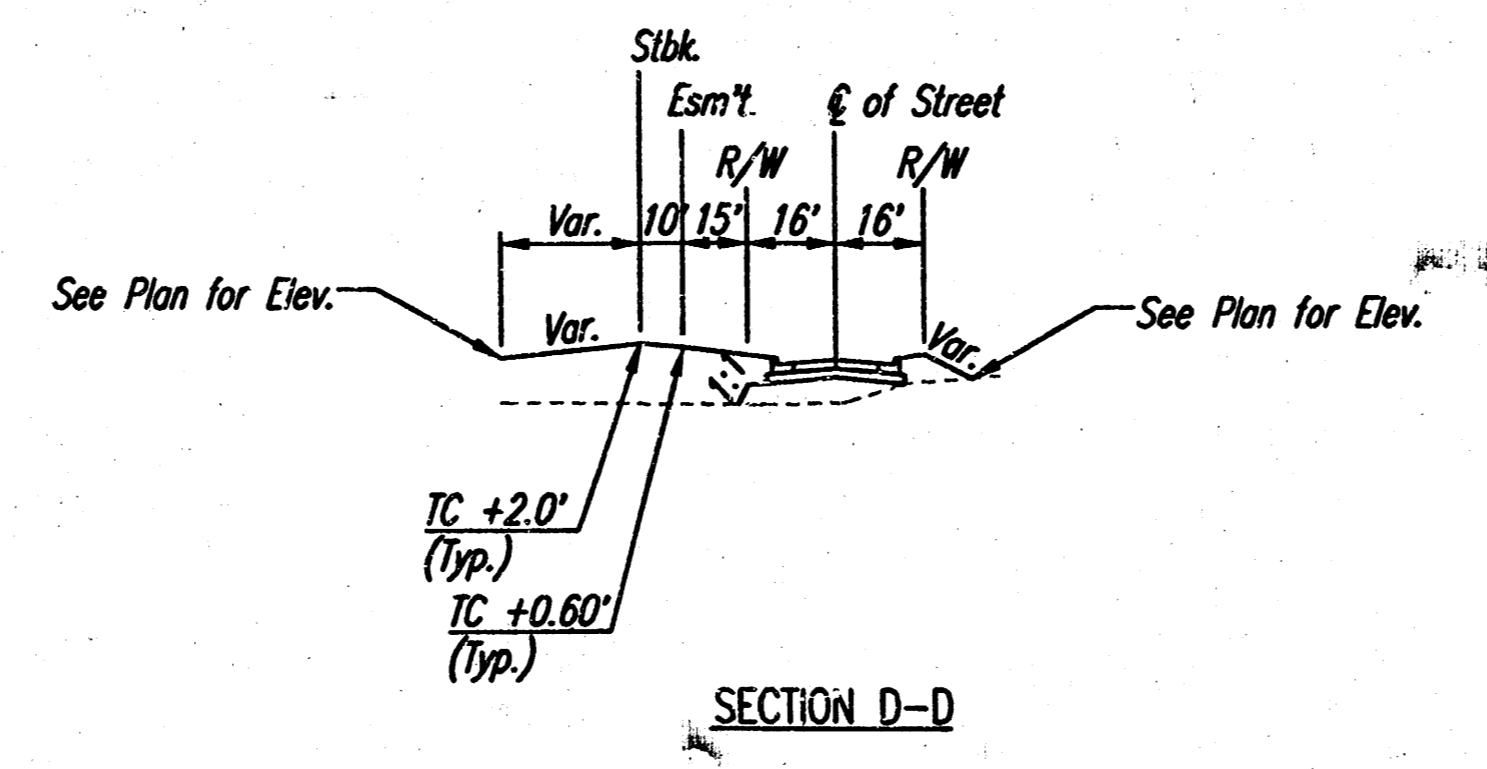
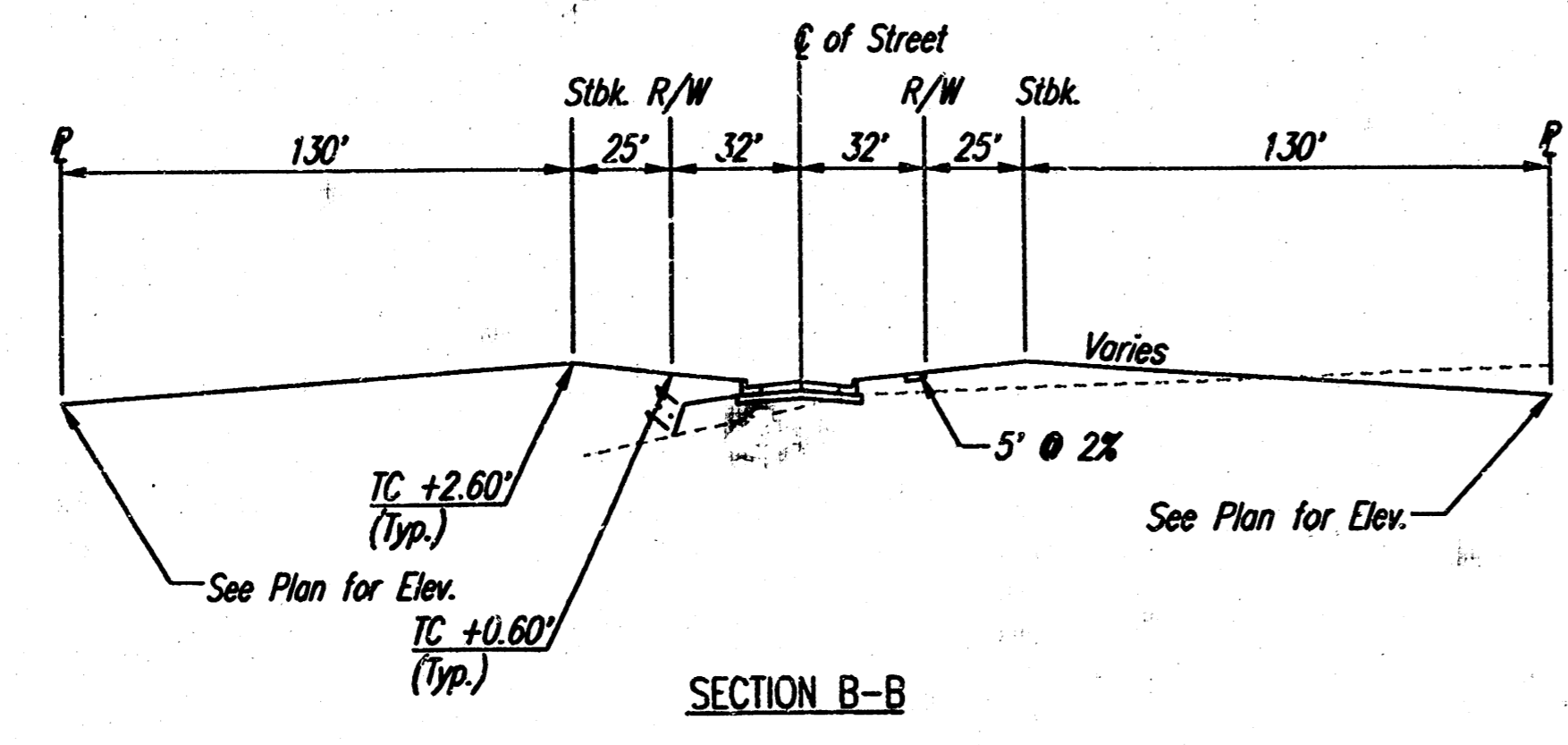
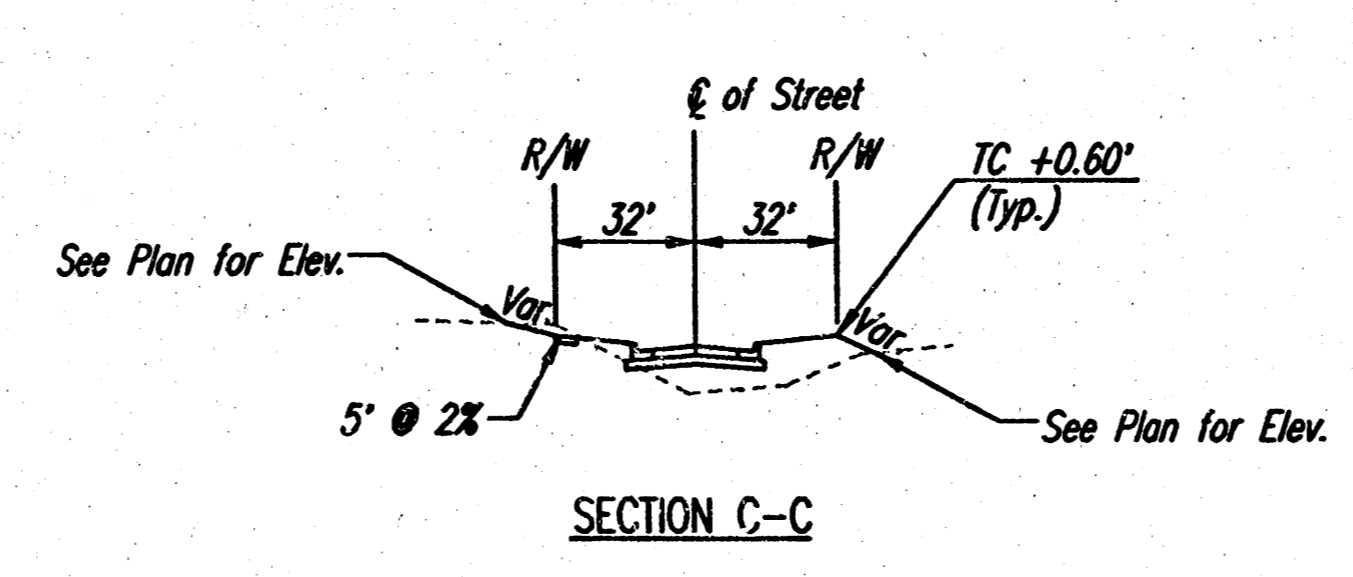
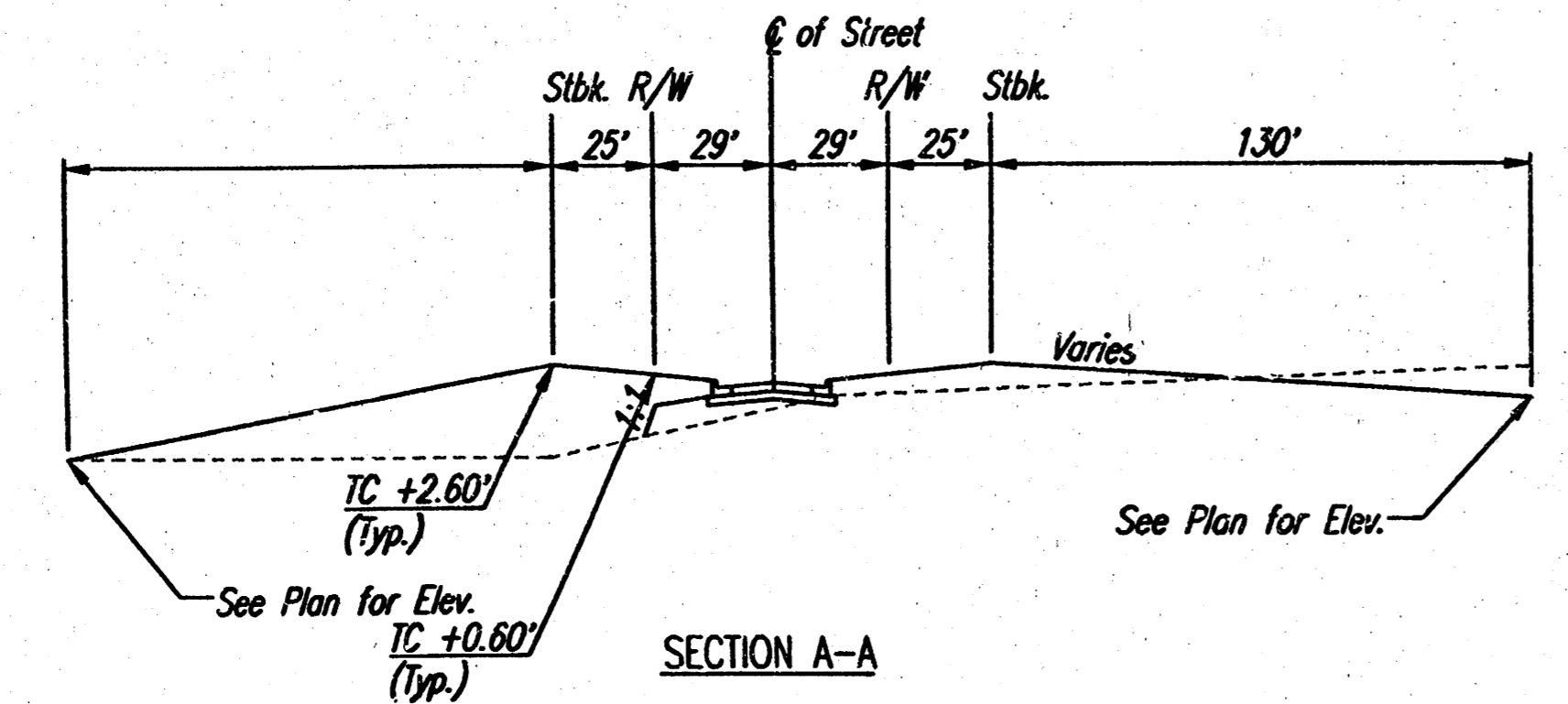


PROJECT NO.	SHEET NO.	TOTAL SHEETS
472-83376	30	50

- a MINIMUM OPENING= 203.5
- b MINIMUM OPENING= 210.6
- c MINIMUM OPENING= 210.5
- d MINIMUM OPENING= 208.7
- f MINIMUM OPENING= 207.5

- (X) STD. BASEMENT
- (V) VIEW-OUT BASEMENT
- (W) WALK-OUT BASEMENT
- * MATCH EXISTING

**APPROVED
DRAINAGE PLAN**



TYPICAL BORROW SECTION
REMINGTON PLACE
REMINGTON PLACE - PHASE 2

FOUR CORNER LOT GRADING

Professional Engineering Consultants, P.A.
303 S. TOPEKA • WICHITA, KANSAS 67202
316-262-2691 • FAX 316-262-3003

Designed by	BER	Checked by	
Drawn by	SAW	Date	DEC., 2002
		Job No.	02.598

→ REVISED 05/13/03

DESIGN: SAW OPER. SAW SCALE: 1"=100.00
03/2002 02:39:00 CHANGE ORDER 05-13-03 CORNER 05-13-2003 02:14:16 pm