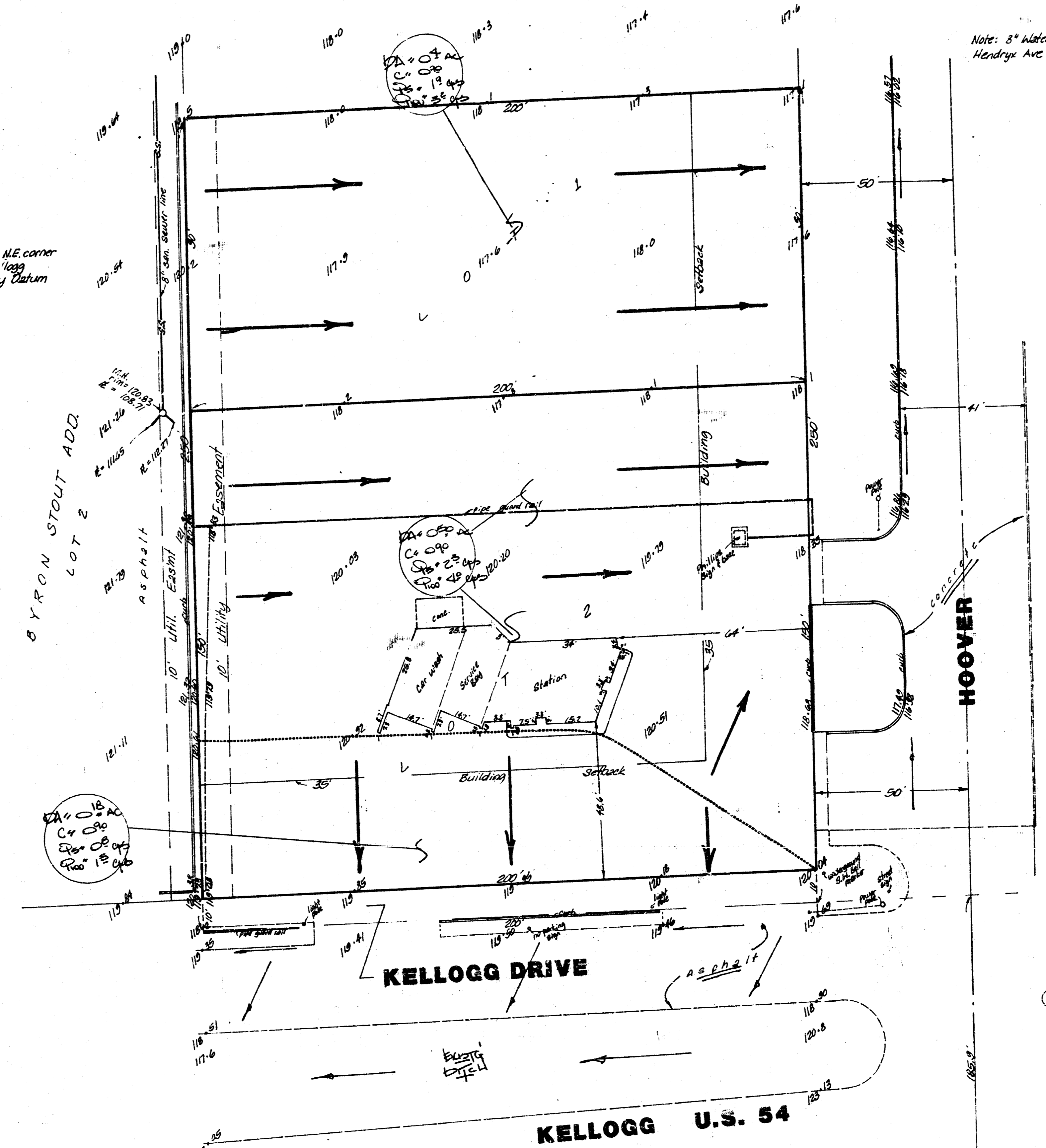


REPROCO 1ST ADDITION
(Drainage)

1"=20'
North arrow
Bench mark:
1" cut in concrete at NE corner
of Bldg. #5401 N.R. 1999
Elevation = 122.17 City Datum

Note: 3" water line in
Hoover Ave to the north



Note
Lots will drain to Kellogg center
of roadway to Hoover road which
is paved. Lot 1 will drain
entirely to Hoover.
Hoover drains north as
indicated. Kellogg center
drain south to the existing ditch
and then - both Lots will drain
to the streets they cross.

SKETCH PLAT
REPROCO 1ST ADDITION
THE SOUTH 250 FEET OF THE EAST 200
FEET OF LOT 1, REPLAT OF DALE GARST
ADDITION AND PART OF GARST GARDENS,
WICHITA, KANSAS.

OWNER: REPROCO INC.
A DELAWARE CORPORATION

FINAL DRAINAGE PLAN *eliet*

SE. CO.
NE 4 27 24 N

ED BAUGHMAN COMPANY, P.A.
SURVEYING & ENGINEERING
2102 WEST 1500 SOUTH, WICHITA, KANSAS 67201

APR 15 1954