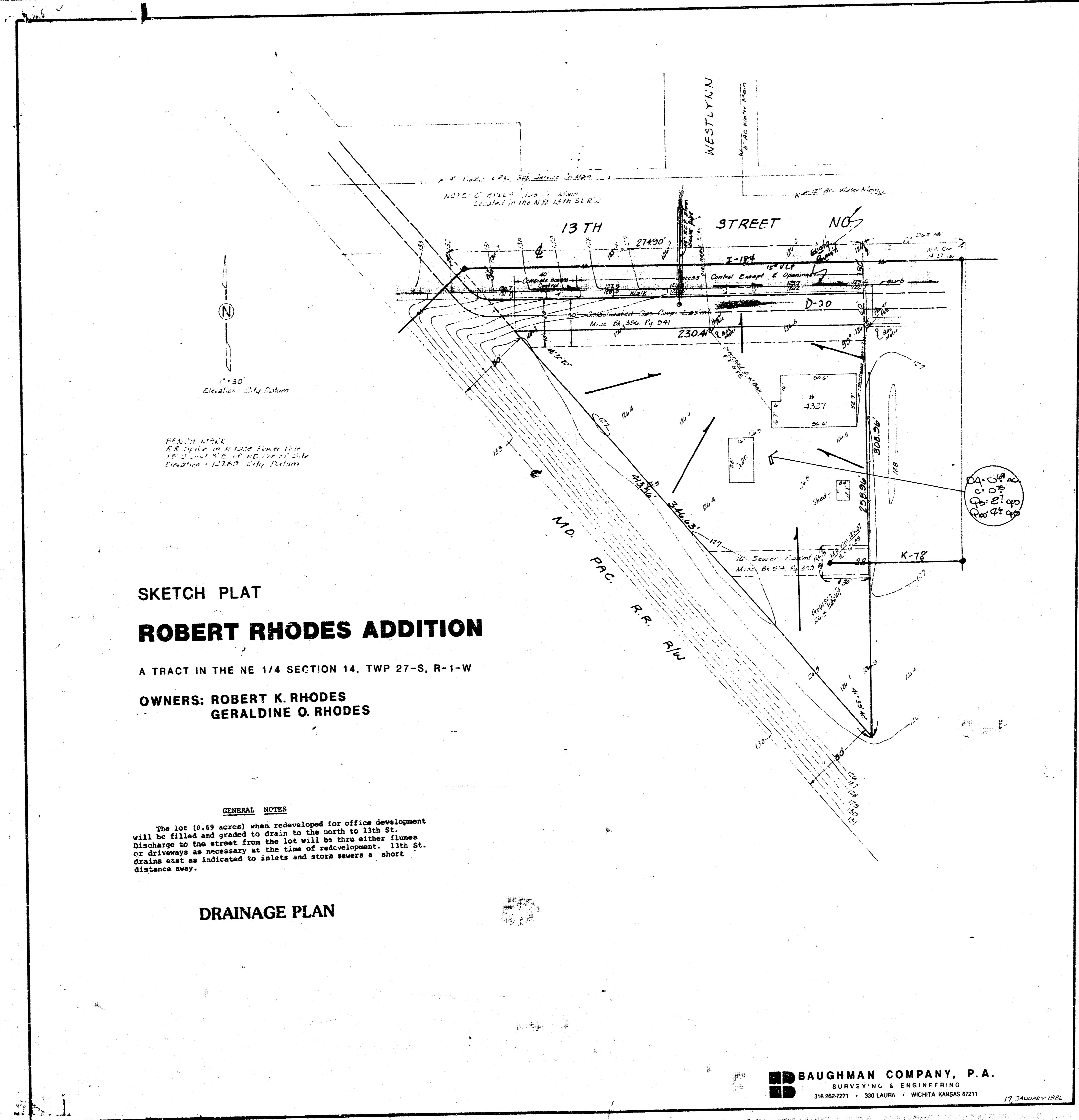


ROBERT RHODES ADDITION
(Drainage)



SKETCH PLAT
ROBERT RHODES ADDITION
A TRACT IN THE NE 1/4 SECTION 14, TWP 27-S, R-1-W
OWNERS: ROBERT K. RHODES
GERALDINE O. RHODES

GENERAL NOTES
The lot (0.69 acres) when redeveloped for office development will be filled and graded to drain to the north to 13th St. Discharge to the street from the lot will be thru either flumes or driveways as necessary at the time of redevelopment. 13th St. drains east as indicated to inlets and storm sewers a short distance away.

DRAINAGE PLAN