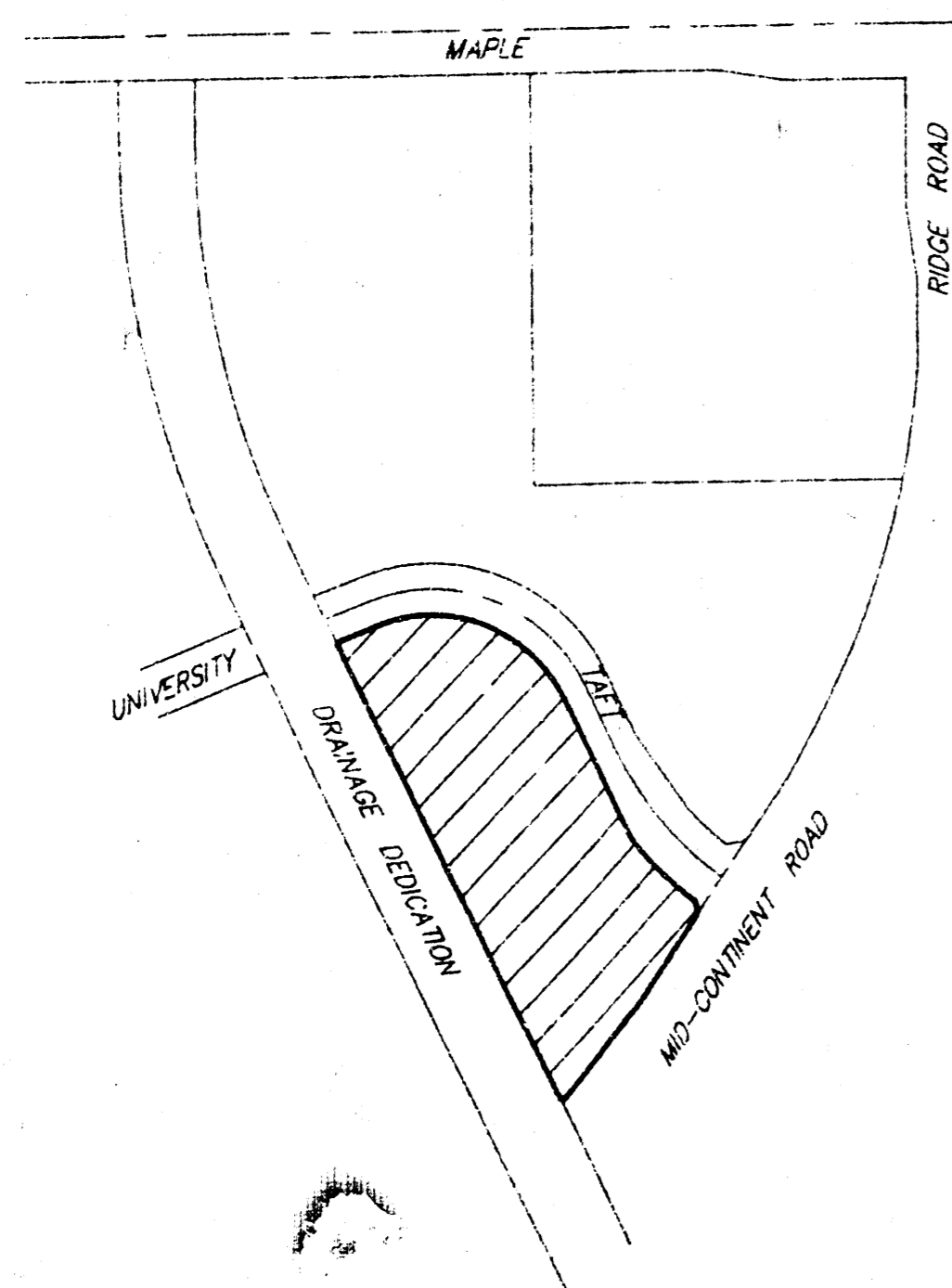


# SKETCH PLAT RIDGE PLAZA 11TH

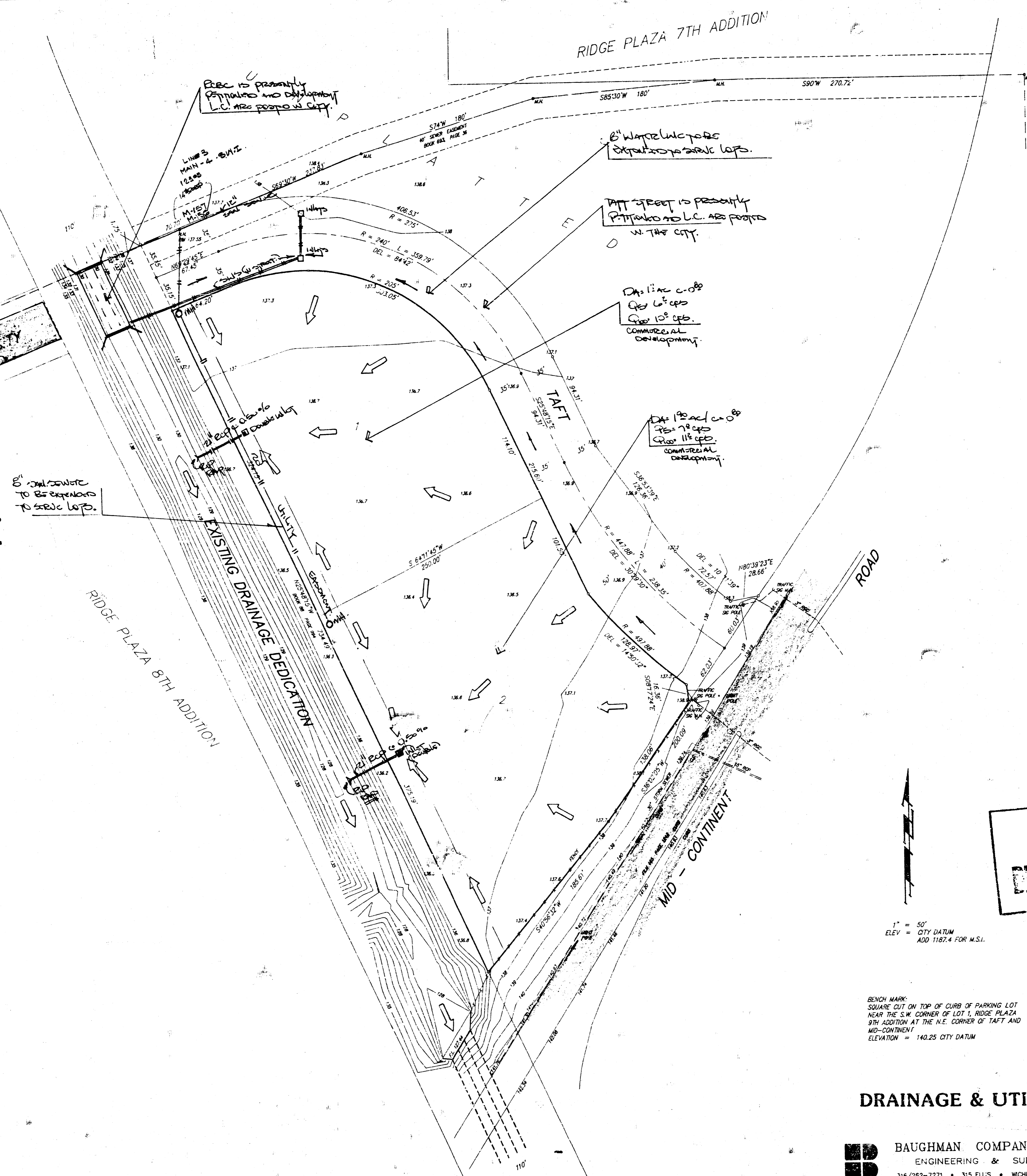
WICHITA, SEDGWICK COUNTY, KANSAS

TRACT IN THE NE 1/4 OF SEC. 28, TWP. 27-S, R-1-W  
OF THE 6TH P.M., SEDGWICK COUNTY, KANSAS.

BOWEN H. & MARY E. BRADY  
6435 E. KELLOGG  
WICHITA, KS 67218



VICINITY PLAT



**APPROVED  
DRAINAGE PLAN**

1" = 50'  
ELEV. = CITY DATUM  
ADD 1187.4 FOR M.S.L.

BENCH MARK:  
SQUARE CUT ON TOP OF CURB OF PARKING LOT  
NEAR THE S.W. CORNER OF LOT 1, RIDGE PLAZA  
8TH ADDITION AT THE N.E. CORNER OF TAFT AND  
MID-CONTINENT  
ELEVATION = 140.25 CITY DATUM

## DRAINAGE & UTILITY PLAN

**BAUGHMAN COMPANY P.A.**  
ENGINEERING & SURVEYING  
316/282-7271 • 315 ELLIS • WICHITA, KANSAS 67211

1 MAR 91