

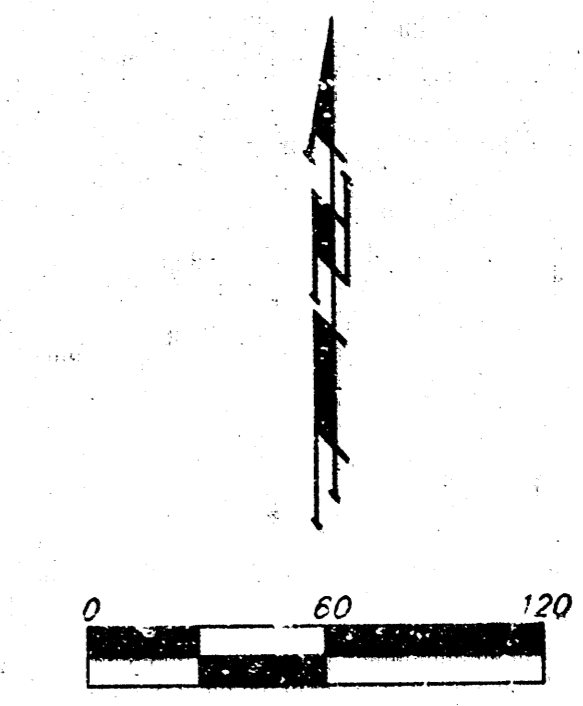
DRAINAGE PLAN

RIDGE PORT 3RD ADDITION

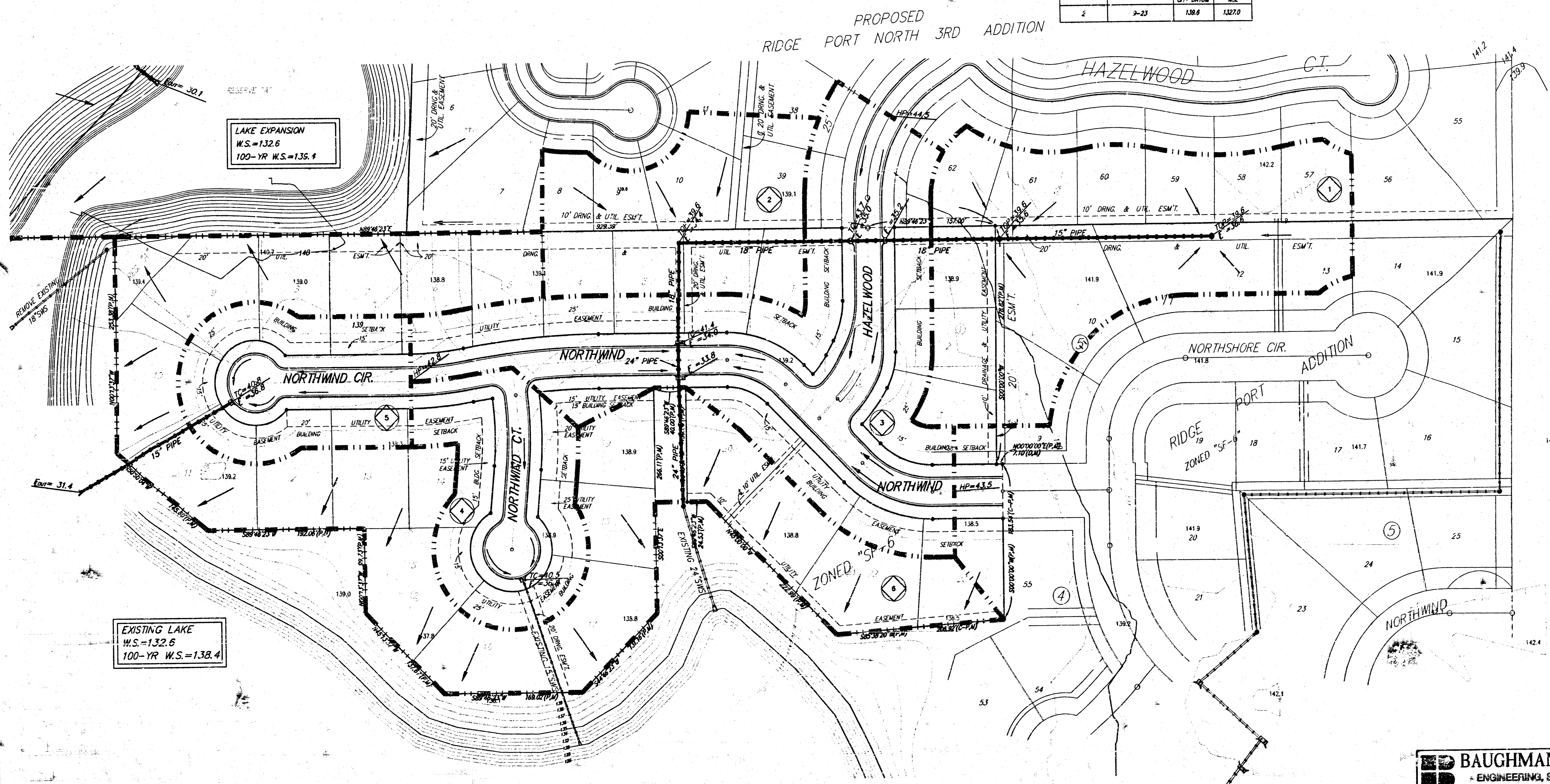
WICHITA, SEDGWICK COUNTY, KANSAS

Drainage Area	Area (Acres)	C _i	C _w	T _t (min)	I _s (in/hr)	I _w (in/hr)	Q ₁ (cfs)	Q ₂ (cfs)
1	2.71	.54	.54	15	3.83	7.37	5.60	10.8
2	1.79	.54	.54	15	3.83	7.37	2.87	5.53
3	3.23	.54	.54	15	3.83	7.37	6.68	12.9
4	1.12	.54	.54	15	3.83	7.37	2.32	4.46
5	1.00	.54	.54	15	3.83	7.37	2.15	4.14
6	4.48	.54	.54	15	3.83	7.37	9.27	17.8

MINIMUM BUILDING PAD ELEVATION FOR LOWEST OPENING TO THE STRUCTURES			
BLOCK	LOT(S)	ELEVATION CITY DATUM	MSL
2	2-23	138.6	1327.0



= #4 REBAR W/ "BAUGHMAN" CAP (FOUND)
 * = #4 REBAR W/ "BAUGHMAN" CAP (SET)
 BENCHMARK:
 CITY JOB - SW COR. RIDGE RD. & 28TH ST. NO.
 80.8' S. & 63.7' W. OF E. BOM.
 ELEV. = 138.15 CITY DATUM (1326.55 M.S.L.)
 OT: DISC - SW HUB QUARD ON R.C.B.C.
 1/2 M. N. OF 28TH ST. NO. & RIDGE RD.
 ELEV. = 144.22 CITY DATUM (131.62 M.S.L.)



LAKE EXPANSION
 W.S.=132.6
 100-YR W.S.=135.4

EXISTING LAKE
 W.S.=132.6
 100-YR W.S.=138.4

15 NOVEMBER 1999

BAUGHMAN COMPANY P.A.
 ENGINEERING, SURVEYING, & PLANNING
 316-262-7272 • 315 BLUE • WICHITA, KANSAS 67211
 WICHITA PLAN/ADDP13.DWG-SCL