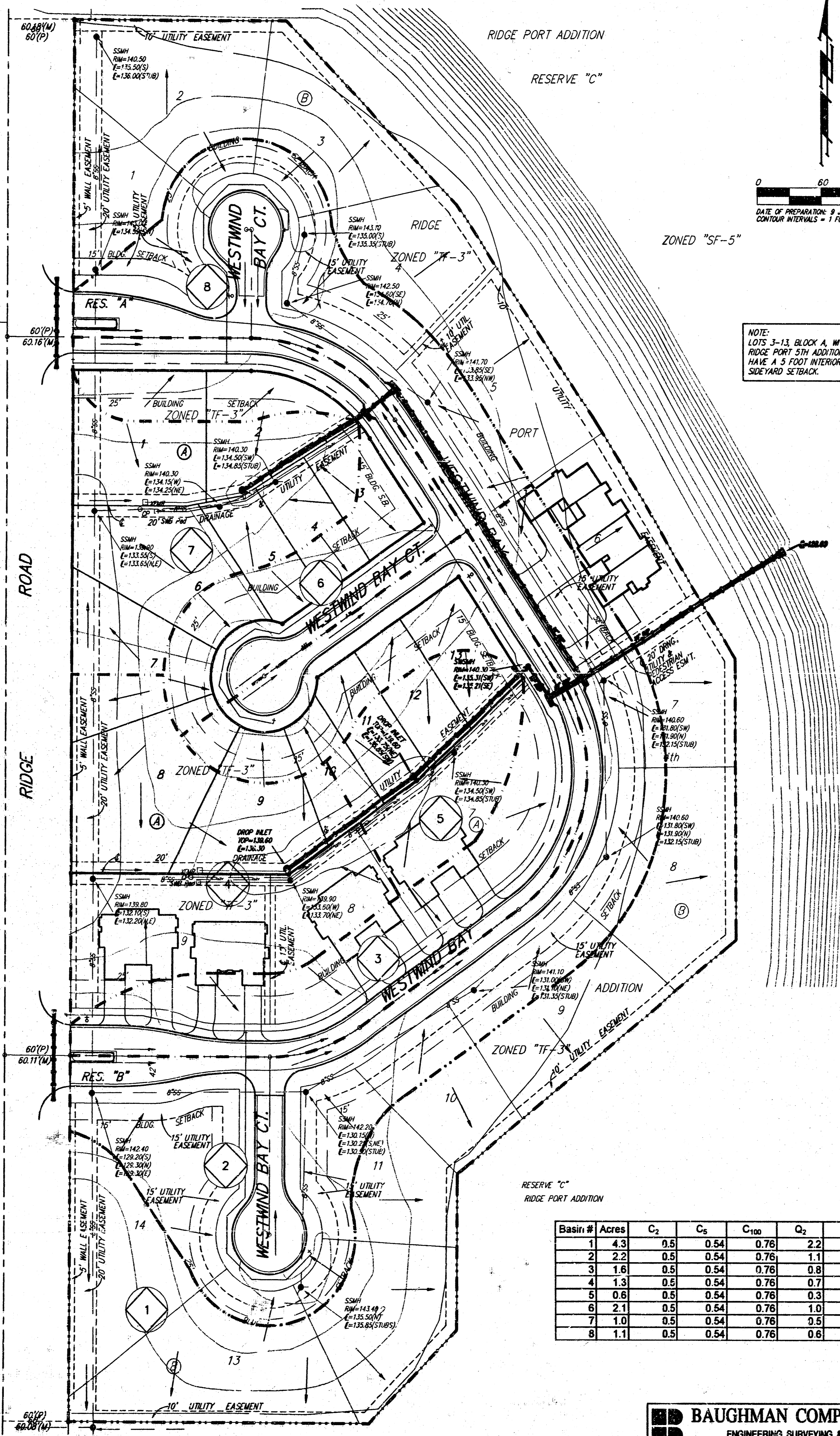


DRAINAGE PLAN

RIDGE PORT 5TH ADDITION

WICHITA, SEDGWICK COUNTY, KANSAS

1
 RIDGE
 2
 PORT
 3
 COMMERCIAL
 W. 33RD N.
 RES. "A"
 4
 RIDGE
 5
 PORT
 6
 12
 COMMERCIAL
 7
 11
 ADDITION



NOTE:
 LOTS 3-13, BLOCK A, WITHIN
 RIDGE PORT 5TH ADDITION SHALL
 HAVE A 5 FOOT INTERIOR
 SIDEYARD SETBACK.

Basin #	Acres	C ₂	C ₅	C ₁₀₀	Q ₂	Q ₅	Q ₁₀₀
1	4.3	0.5	0.54	0.76	2.2	2.3	3.3
2	2.2	0.5	0.54	0.76	1.1	1.2	1.7
3	1.6	0.5	0.54	0.76	0.8	0.9	1.2
4	1.3	0.5	0.54	0.76	0.7	0.7	1.0
5	0.6	0.5	0.54	0.76	0.3	0.3	0.4
6	2.1	0.5	0.54	0.76	1.0	1.1	1.6
7	1.0	0.5	0.54	0.76	0.5	0.5	0.8
8	1.1	0.5	0.54	0.76	0.8	0.6	0.9