

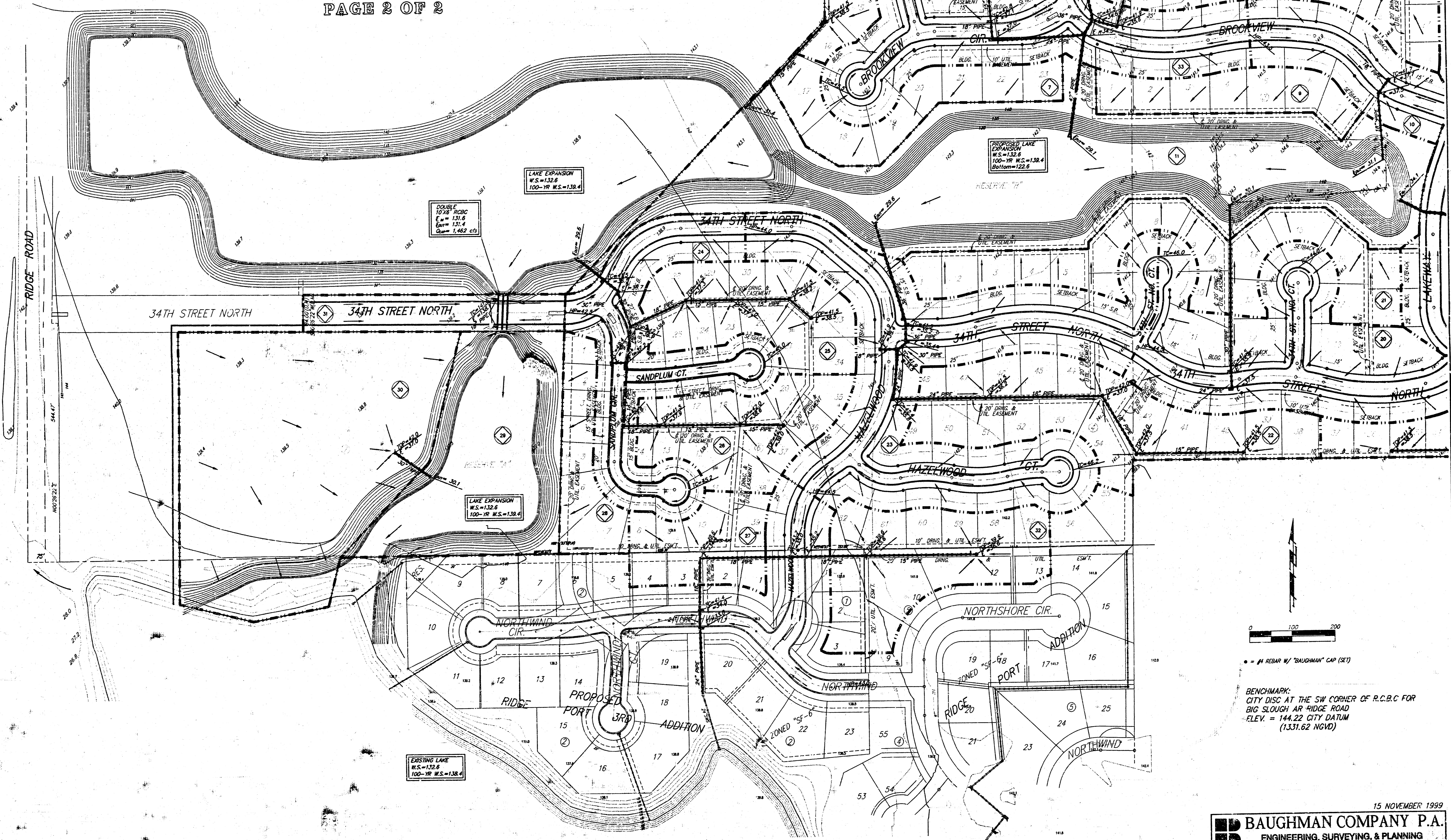


# DRAINAGE PLAN

## RIDGE PORT NORTH 3RD ADDITION

WICHITA, SEDGWICK COUNTY, KANSAS

PAGE 2 OF 2



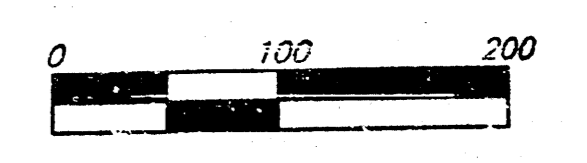
DOUBLE  
10" R.C.B.C.  
E = 131.6  
B = 131.4  
Q = 1,462 cfs

LAKE EXPANSION  
W.S. = 132.6  
100-YR W.S. = 138.4

LAKE EXPANSION  
W.S. = 132.6  
100-YR W.S. = 138.4

EXISTING LAKE  
W.S. = 132.6  
100-YR W.S. = 138.4

PROPOSED LAKE  
EXPANSION  
W.S. = 132.6  
100-YR W.S. = 138.4  
Bottom = 122.6



• = #4 REBAR W/ "BAUGHMAN" CAP (SET)

BENCHMARK:  
CITY DISC AT THE SW CORNER OF R.C.B.C FOR  
BIG SLOUGH AND RIDGE ROAD  
ELEV. = 144.22 CITY DATUM  
(1331.62 NGVD)

15 NOVEMBER 1999

**BAUGHMAN COMPANY P.A.**  
ENGINEERING, SURVEYING, & PLANNING  
316-232-7271 • 315 ELLIS • WICHITA, KANSAS 67211

F:\HYDRO\DRPLAN\RIDGEPORT.DWG-SC2