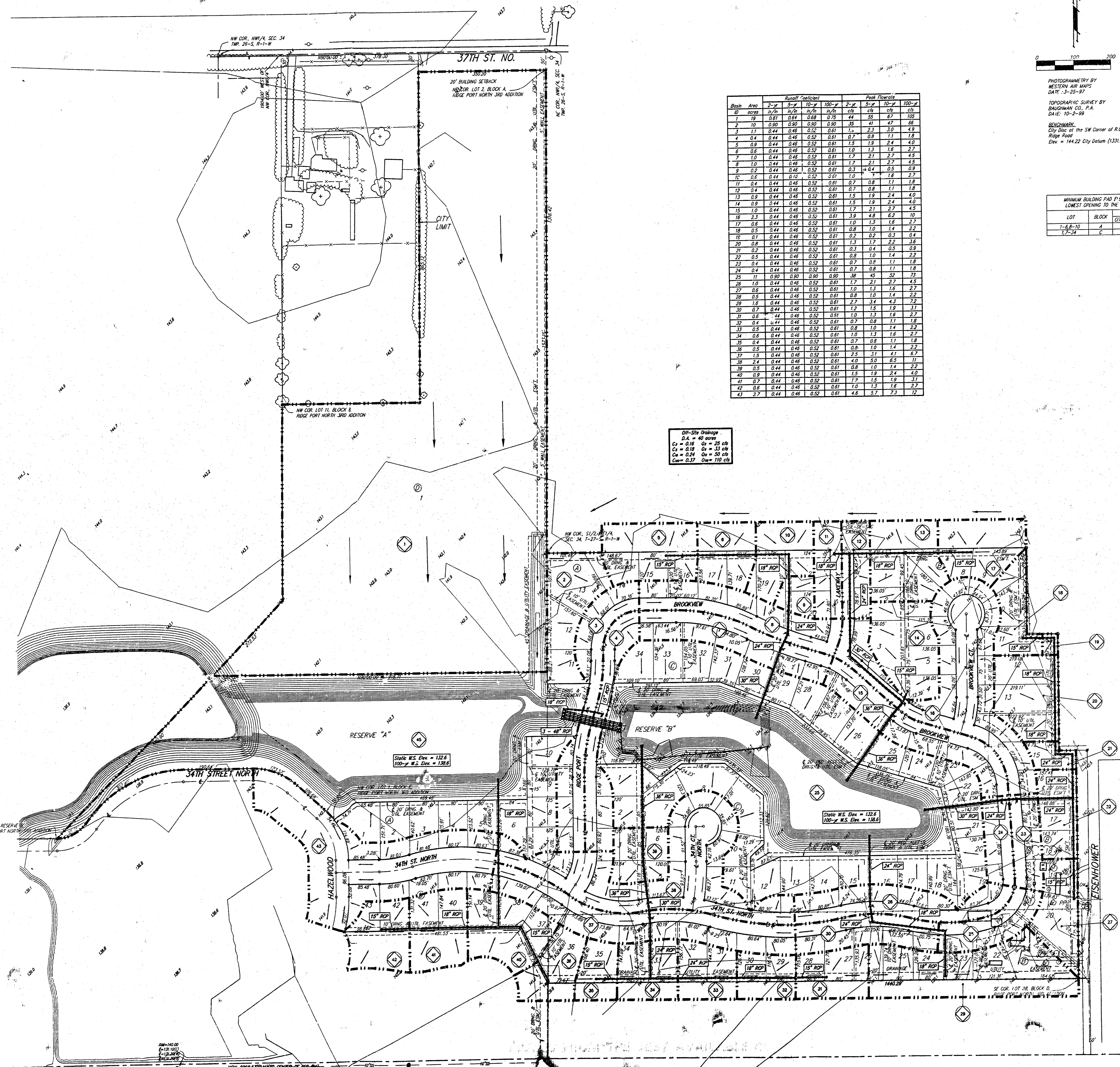


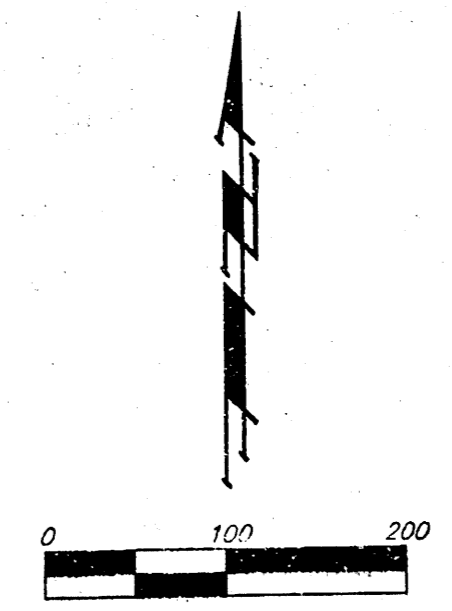
DRAINAGE PLAN

RIDGE PORT NORTH 4TH ADDITION

WICHITA, SEDGWICK COUNTY, KANSAS



Block	Area	Runoff Coefficient			Peak Flowrate		
		2-yr	5-yr	100-yr	2-yr	5-yr	100-yr
1	0.01	0.01	0.02	0.02	0.01	0.02	0.03
2	1.0	0.80	0.80	0.80	45	41	47
3	1.1	0.44	0.48	0.52	0.81	1.3	2.3
4	0.4	0.44	0.48	0.52	0.81	0.7	1.1
5	0.9	0.44	0.48	0.52	0.81	1.5	1.9
6	0.6	0.44	0.48	0.52	0.81	1.0	1.3
7	1.0	0.44	0.48	0.52	0.81	1.7	2.1
8	1.0	0.44	0.48	0.52	0.81	1.7	2.1
9	0.2	0.44	0.48	0.52	0.81	0.3	0.4
10	0.6	0.44	0.48	0.52	0.81	1.0	1.3
11	0.4	0.44	0.48	0.52	0.81	0.7	0.8
12	0.4	0.44	0.48	0.52	0.81	0.7	0.8
13	0.9	0.44	0.48	0.52	0.81	1.5	1.9
14	0.9	0.44	0.48	0.52	0.81	1.5	1.9
15	1.0	0.44	0.48	0.52	0.81	1.7	2.1
16	2.3	0.44	0.48	0.52	0.81	3.9	4.9
17	0.6	0.44	0.48	0.52	0.81	1.0	1.3
18	0.5	0.44	0.48	0.52	0.81	0.8	1.0
19	0.1	0.44	0.48	0.52	0.81	0.2	0.3
20	0.8	0.44	0.48	0.52	0.81	1.3	1.7
21	0.2	0.44	0.48	0.52	0.81	0.3	0.4
22	0.5	0.44	0.48	0.52	0.81	0.8	1.0
23	0.4	0.44	0.48	0.52	0.81	0.7	0.8
24	0.4	0.44	0.48	0.52	0.81	0.7	0.8
25	1.1	0.90	0.90	0.90	38	45	52
26	1.0	0.44	0.48	0.52	0.81	1.7	2.1
27	0.6	0.44	0.48	0.52	0.81	1.0	1.3
28	0.5	0.44	0.48	0.52	0.81	0.8	1.0
29	1.6	0.44	0.48	0.52	0.81	2.7	3.4
30	0.7	0.44	0.48	0.52	0.81	1.2	1.5
31	0.6	0.44	0.48	0.52	0.81	1.0	1.3
32	0.4	0.44	0.48	0.52	0.81	0.7	0.8
33	0.5	0.44	0.48	0.52	0.81	0.8	1.0
34	0.6	0.44	0.48	0.52	0.81	1.0	1.3
35	0.4	0.44	0.48	0.52	0.81	0.7	0.8
36	0.5	0.44	0.48	0.52	0.81	0.8	1.0
37	1.5	0.44	0.48	0.52	0.81	2.5	3.1
38	2.4	0.44	0.48	0.52	0.81	4.0	5.0
39	1.5	0.44	0.48	0.52	0.81	2.5	3.1
40	0.9	0.44	0.48	0.52	0.81	1.5	1.9
41	0.7	0.44	0.48	0.52	0.81	1.2	1.5
42	0.6	0.44	0.48	0.52	0.81	1.0	1.3
43	2.7	0.44	0.48	0.52	0.81	4.6	5.7



PHOTOGRAMMETRY BY
WESTERN AIR MAPS
DATE: 3-25-97

TOPOGRAPHIC SURVEY BY
BRADSHAW CO., P.A.
DATE: 10-2-99

BOUNDARY:
City Line of the SW Corner of R.C.B.C. for Big Spring #1
Ridge Road
Elev = 144.22 City Datum (1331.62 NGVD)

MINIMUM BUILDING PAD ELEVATIONS FOR LOWEST OPENING TO THE STRUCTURES

LOT	BLOCK	CITY DATUM	ELEVATION	NGVD
1-68-10	A	140.6	139.0	
7-34	C	140.8	139.0	

Off-Site Drainage
C_d = 0.40
C_d = 0.15 C_d = 25 cfs
C_d = 0.08 C_d = 33 cfs
C_d = 0.04 C_d = 50 cfs
C_d = 0.02 C_d = 110 cfs