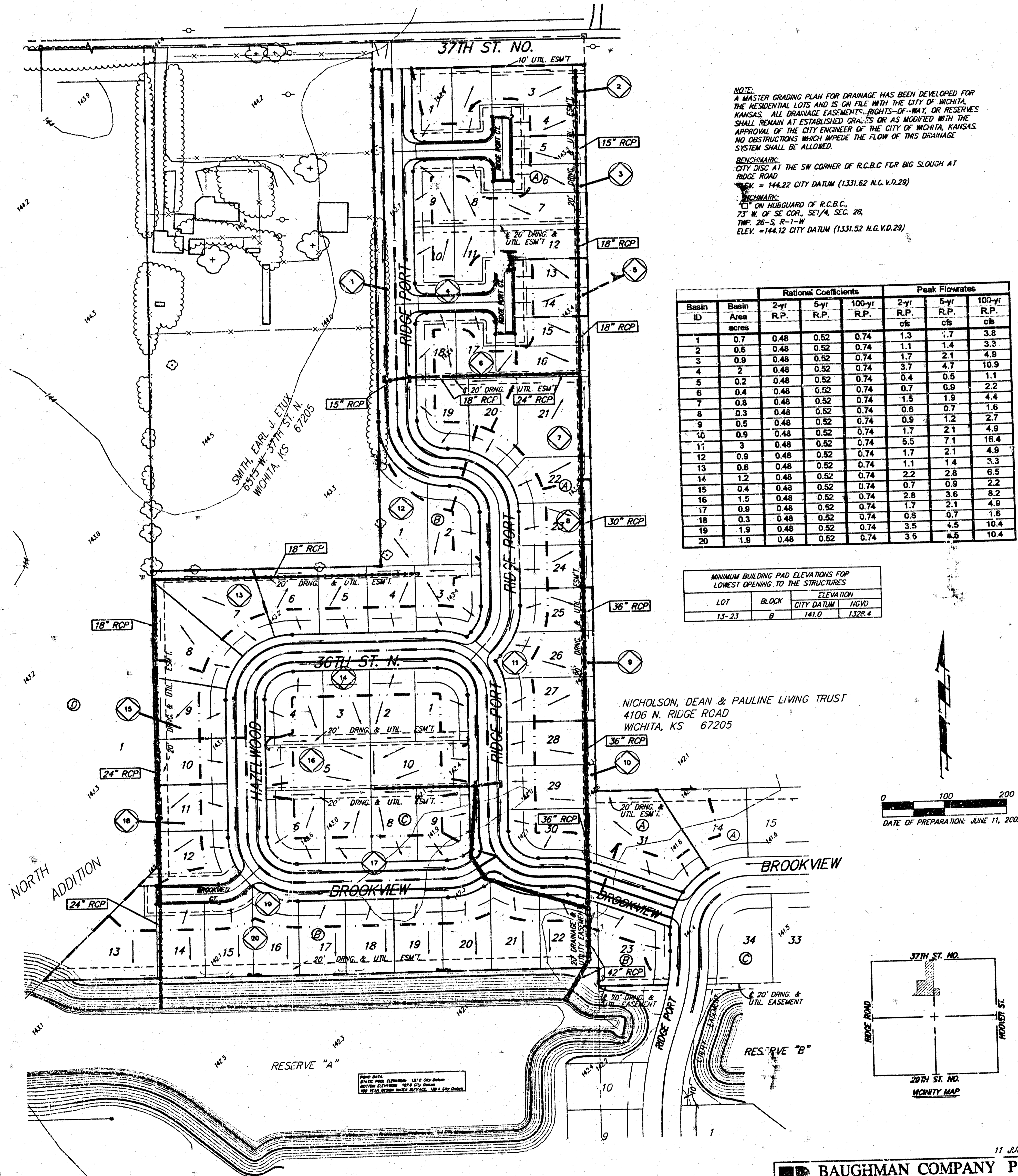


DRAINAGE PLAN

RIDGE PORT NORTH 5TH ADDITION

WICHITA, SEDGWICK COUNTY, KANSAS



NOTE: A MASTER GRADING PLAN FOR DRAINAGE HAS BEEN DEVELOPED FOR THE RESIDENTIAL LOTS AND IS ON FILE WITH THE CITY OF WICHITA, KANSAS. ALL DRAINAGE EASEMENTS, RIGHTS-OF-WAY, OR RESERVES SHALL REMAIN AT ESTABLISHED WIDTHS OR AS MODIFIED WITH THE APPROVAL OF THE CITY ENGINEER OF THE CITY OF WICHITA, KANSAS. NO OBSTRUCTIONS WHICH IMPED THE FLOW OF THIS DRAINAGE SYSTEM SHALL BE ALLOWED.

BENCHMARK: CITY DISC AT THE SW CORNER OF R.C.B.C. FOR BIG SLOUGH AT RIDGE ROAD
 ELEV. = 144.22 CITY DATUM (1331.62 N.G.V.D.29)

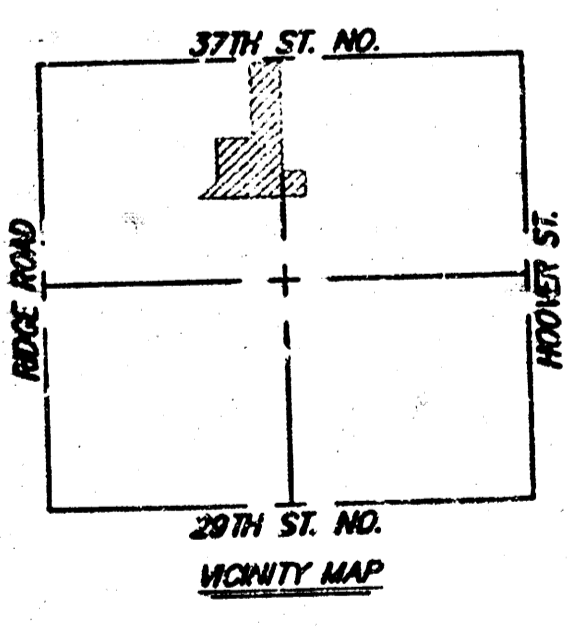
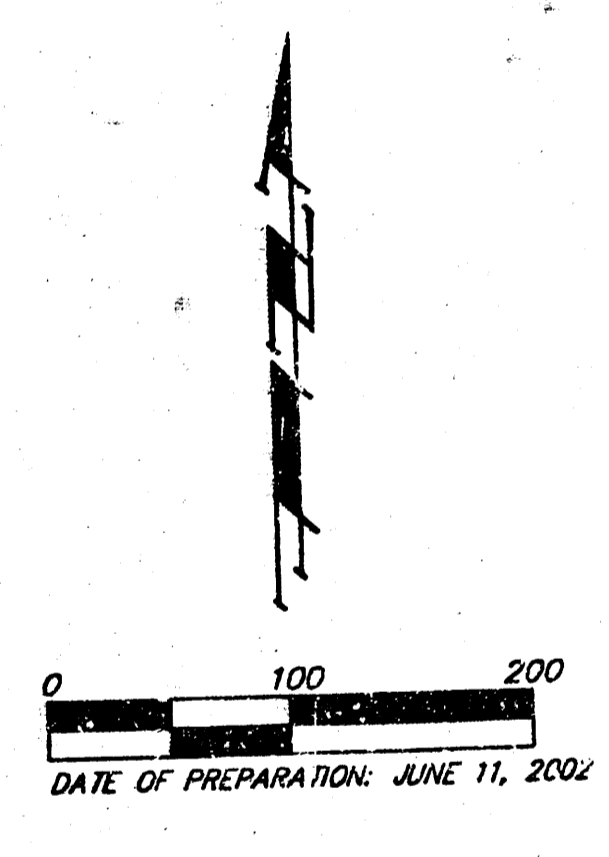
BENCHMARK: 1\"/>
 ELEV. = 144.12 CITY DATUM (1331.52 N.G.V.D.29)

Basin ID	Basin Area acres	Rational Coefficients			Peak Flowrates		
		2-yr R.P.	5-yr R.P.	100-yr R.P.	2-yr R.P. cfs	5-yr R.P. cfs	100-yr R.P. cfs
1	0.7	0.48	0.52	0.74	1.3	1.7	3.8
2	0.6	0.48	0.52	0.74	1.1	1.4	3.3
3	0.9	0.48	0.52	0.74	1.7	2.1	4.9
4	2	0.48	0.52	0.74	3.7	4.7	10.9
5	0.2	0.48	0.52	0.74	0.4	0.5	1.1
6	0.4	0.48	0.52	0.74	0.7	0.9	2.2
7	0.8	0.48	0.52	0.74	1.5	1.9	4.4
8	0.3	0.48	0.52	0.74	0.6	0.7	1.6
9	0.5	0.48	0.52	0.74	0.9	1.2	2.7
10	0.9	0.48	0.52	0.74	1.7	2.1	4.9
11	3	0.48	0.52	0.74	5.5	7.1	16.4
12	0.9	0.48	0.52	0.74	1.7	2.1	4.9
13	0.6	0.48	0.52	0.74	1.1	1.4	3.3
14	1.2	0.48	0.52	0.74	2.2	2.8	6.5
15	0.4	0.48	0.52	0.74	0.7	0.9	2.2
16	1.5	0.48	0.52	0.74	2.8	3.5	8.2
17	0.9	0.48	0.52	0.74	1.7	2.1	4.9
18	0.3	0.48	0.52	0.74	0.6	0.7	1.6
19	1.9	0.48	0.52	0.74	3.5	4.5	10.4
20	1.9	0.48	0.52	0.74	3.5	4.5	10.4

MINIMUM BUILDING PAD ELEVATIONS FOR LOWEST OPENING TO THE STRUCTURES

LOT	BLOCK	CITY DATUM	NGVD
13-23	B	141.0	1326.4

NICHOLSON, DEAN & PAULINE LIVING TRUST
 4106 N. RIDGE ROAD
 WICHITA, KS 67205



11 JUNE 2002

BAUGHMAN COMPANY P.A.
 ENGINEERING, SURVEYING, & PLANNING
 316-262-7271 • 315 ELLIS • WICHITA, KANSAS 67211
 P. 19147 (RIDGEPORT NORTH 5TH ADDITION) DRAINAGE PLAN DWG-001