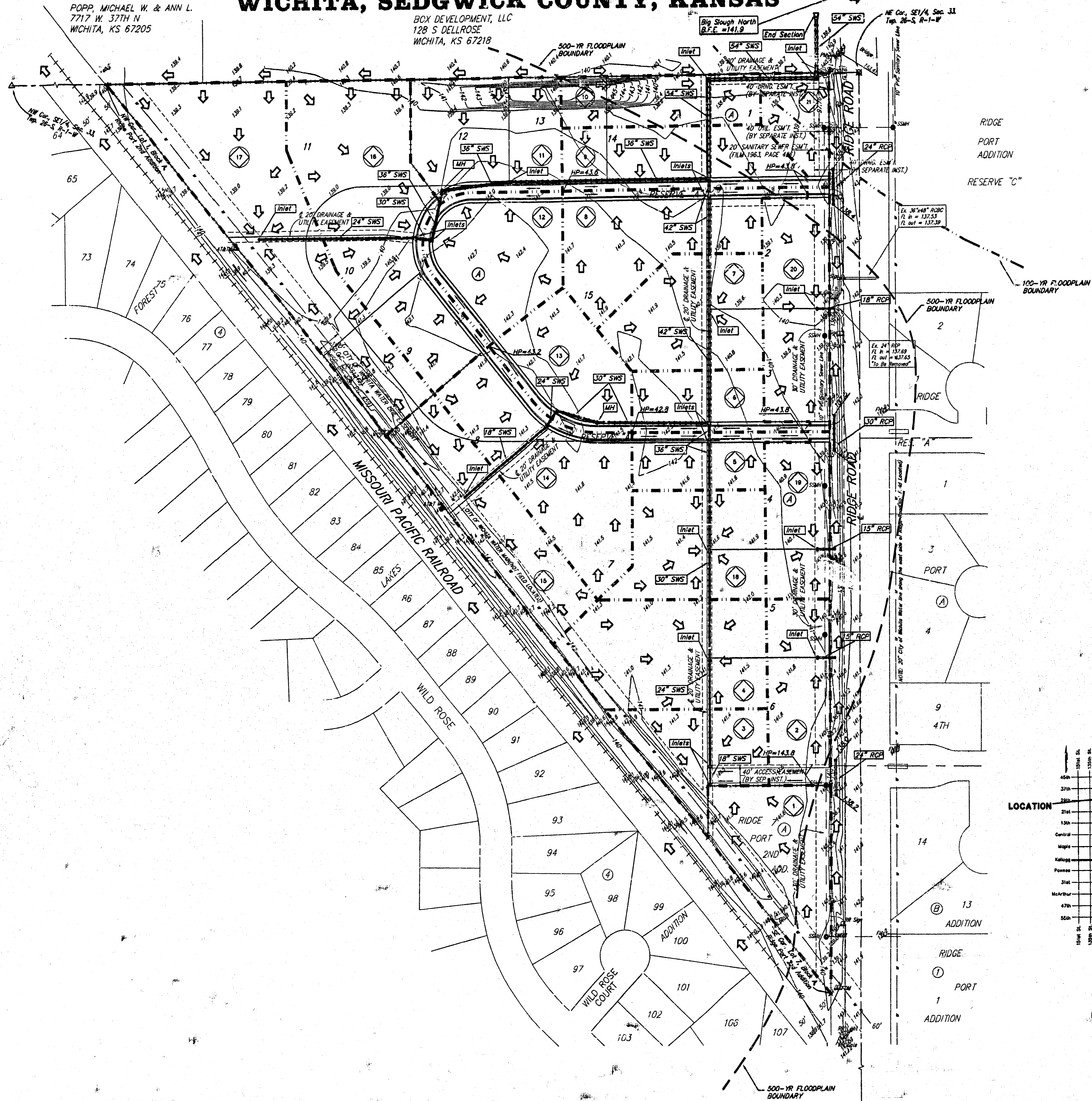


DRAINAGE PLAN RIDGE PORT COMMERCIAL PARK WICHITA, SEDGWICK COUNTY, KANSAS

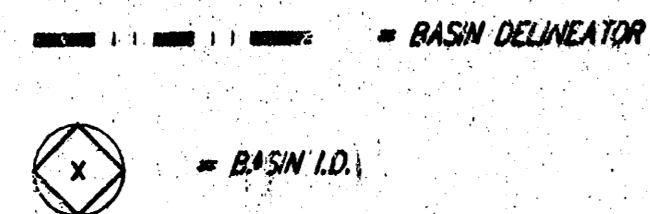
POPP, MICHAEL W. & ANN L.
7717 W. 37TH N
WICHITA, KS 67205

BOX DEVELOPMENT, LLC
128 S DELLROSE
WICHITA, KS 67218



DRAINAGE NOTE:

- The Existing Soil Type per Soil Survey of Sedgwick County, Kansas is Canadian Fine Sandy Loam, Lesho Loam, Wabcock Sandy Loam, Plena Fine Sandy Loam. The Hydrologic Group for Each Soil Type in their Respective Order is B, C, C, & D.
- A Portion of This Parcel of Land is Located in a Zone B & Zone A Per Revised FEMA LOMR Map. (Community/Plan Number: 200321-123) Effective Date: April 9, 1998.



Basin I.D.	Acre	Runoff Coefficient		Peak Flowrate	
		5-y	100-y	5-y	100-y
				cfs	cfs
1	1.45	0.85	0.91	5.6	9.7
2	1.05	0.85	0.91	4.1	7.0
3	1.02	0.85	0.91	4.0	6.8
4	1.87	0.85	0.91	7.2	13.1
5	0.74	0.85	0.91	2.9	5.0
6	0.78	0.85	0.91	3.0	5.2
7	1.43	0.85	0.91	5.5	8.6
8	1.63	0.85	0.91	6.3	11.1
9	1.26	0.85	0.91	4.9	8.5
10	0.93	0.85	0.91	3.6	6.2
11	1.53	0.85	0.91	5.9	10.1
12	1.46	0.85	0.91	5.7	9.8
13	1.13	0.85	0.91	4.4	7.6
14	2.02	0.85	0.91	7.5	14.1
15	1.51	0.85	0.91	5.9	10.1
16	2.85	0.85	0.91	11.1	19.1
17	3.10	0.85	0.91	12.1	21.1
18	1.37	0.85	0.91	5.3	9.2
19	0.83	0.85	0.91	3.6	6.2
20	1.38	0.85	0.91	5.3	9.3
21	0.55	0.85	0.91	2.1	3.7

DATE OF PREPARATION: JANUARY 28, 2002
DATE OF TOPOGRAPHY: AUGUST 10, 2002
CONTOUR INTERVALS: 1 FOOT

* = #4 Rubber w/ "Daughman" Cap (Set)
 # = #4 Rubber w/ "Daughman" Cap (Found)
 ○ = 1/2" Iron in Thimble (Found)
 △ = 3/4" Iron w/ "PEL" Cap (Found)
 ⊠ = Road Road Spike (Found)

(M) = Measured
 (P) = Plotted
 (D) = Described
 (C-P) = Calculated per Plotted Info
 (C-D) = Calculated per Described Info

Minimum Building Foot Elevations for Lowest Opening to the Structures

Lots	Block	City Datum	NGVD
1-15	A	141.9	1331.3

Benchmark:
City Dots - SW Corner of Ridge Road & 29th Street West.
80.8' ± @ 63.7' W of C both.
Elev. = 138.15 City Datum (1326.55 NGVD)

"□" cut on SE Corner of Bridge, 1/2 Mile N. of 29th Street North & Ridge Road.
Elev. = 141.85 City Datum (1331.25 NGVD)

- FM ⊕ = Fire Hydrant
- FM ⊙ = Fanning Marker
- AT&T ⊕ = AT&T Marker
- S&W ⊕ = S&W Marker
- FM ⊕ = Fiber Optics Marker
- SP ⊕ = Sign
- SSM ⊕ = Sanitary Sewer Manhole
- SSM ⊕ = Southwestern Bell Manhole
- SSM ⊕ = Southwestern Bell Fireman
- SSM ⊕ = Stormwater Sewer Manhole
- WM ⊕ = Water Meter
- WV ⊕ = Water Valve

