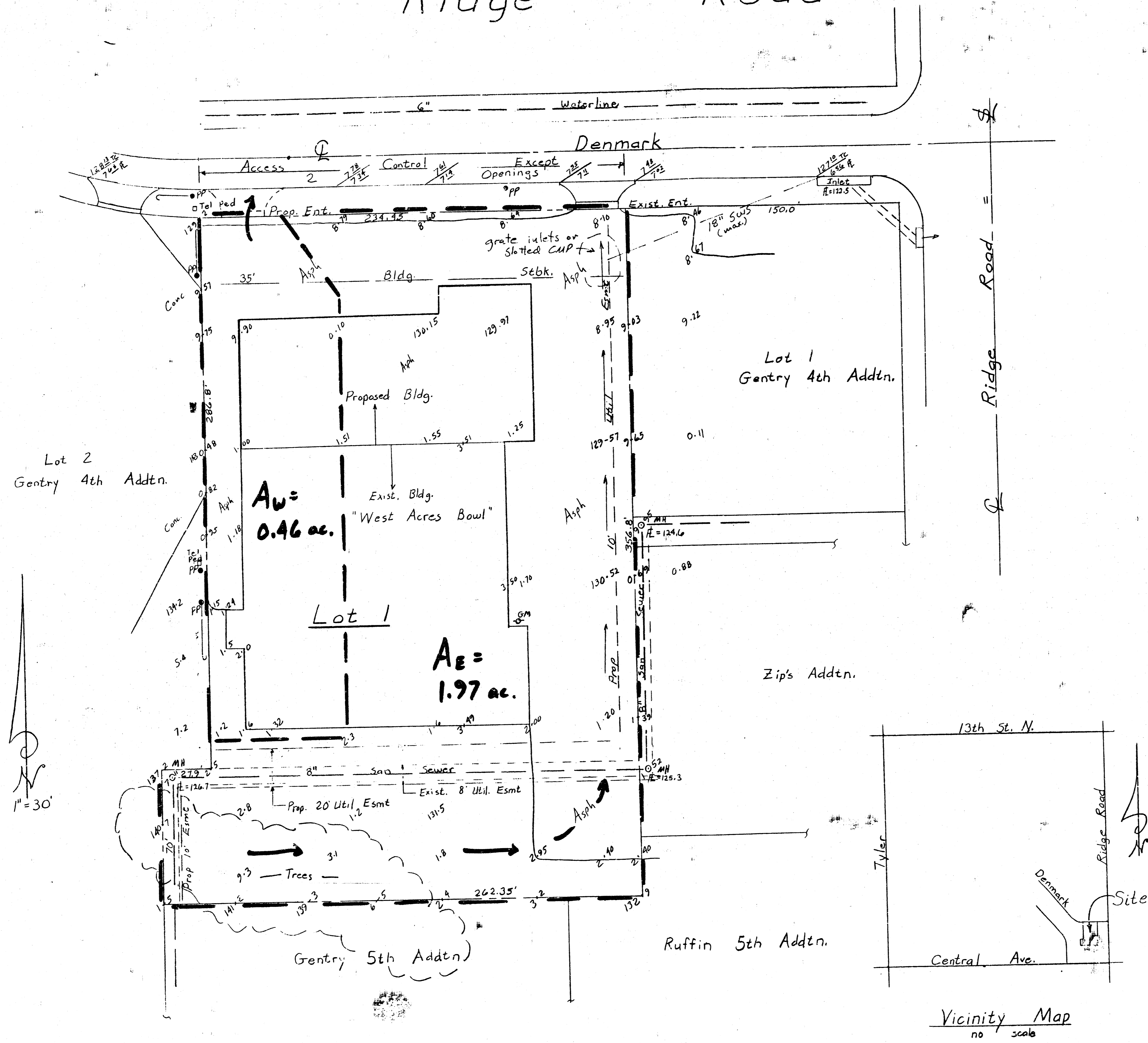


# Drainage Plan for Ridge Road Addition

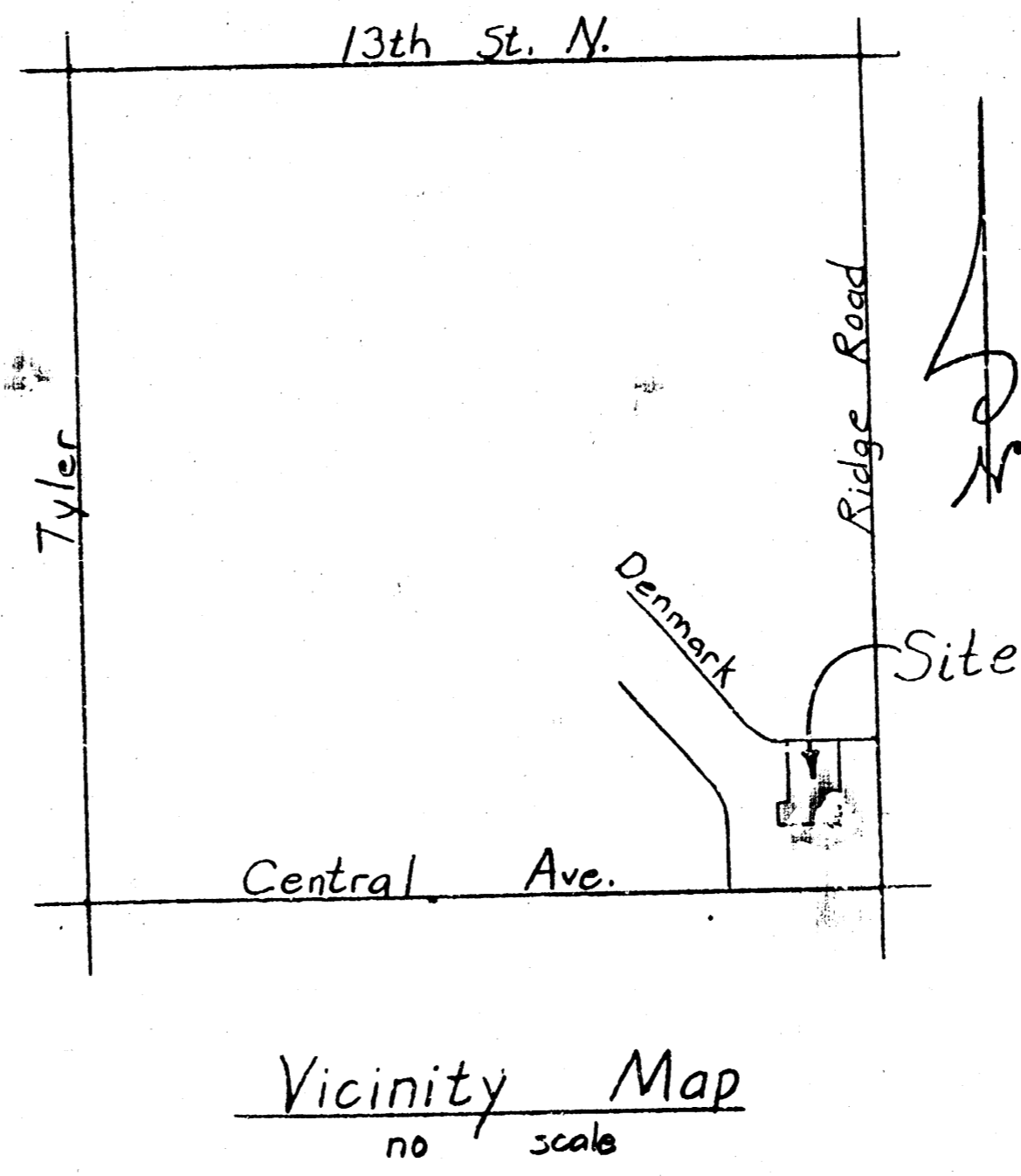


Owner: Ridge Road Bowl, Inc.  
749 North Ridge Road  
Wichita, Kansas 67212

Legal Description:  
That part of Lot 4, Block 5,  
Country Acres 2nd Addn to  
Sedgwick County, Kansas  
bounded on the north by Denmark Street;  
bounded on the east by Lot 1, Block 1,  
Gentry 4th Addn. & Zip's Addn.;  
bounded on the southeast by Ruffin  
5th Addn.;  
bounded on the south by Gentry 5th  
Addn.;  
bounded on the west by Lot 2, Block 1,  
Gentry 4th Addn.

Bench Mark:  
Chiseled "0" cut, TC, SW Corner - Curb Inlet,  
East Curb Ridge Road at Denmark  
Elev. 126.34, City Datum  
Date of Topography Survey: May, 1990

$A_U = 0.46$   
 $A_E = 1.97$   
 $A = 0.14$   
 $I = 4.56$   
 $Q = 0.14 \times 4.56 \times 4.56$   
 $= 2.94$   
 $= 2.94$



**APPROVED  
DRAINAGE PLAN**

S. E. Anderson PE/LS  
Whitewater, Kansas  
May, 1990