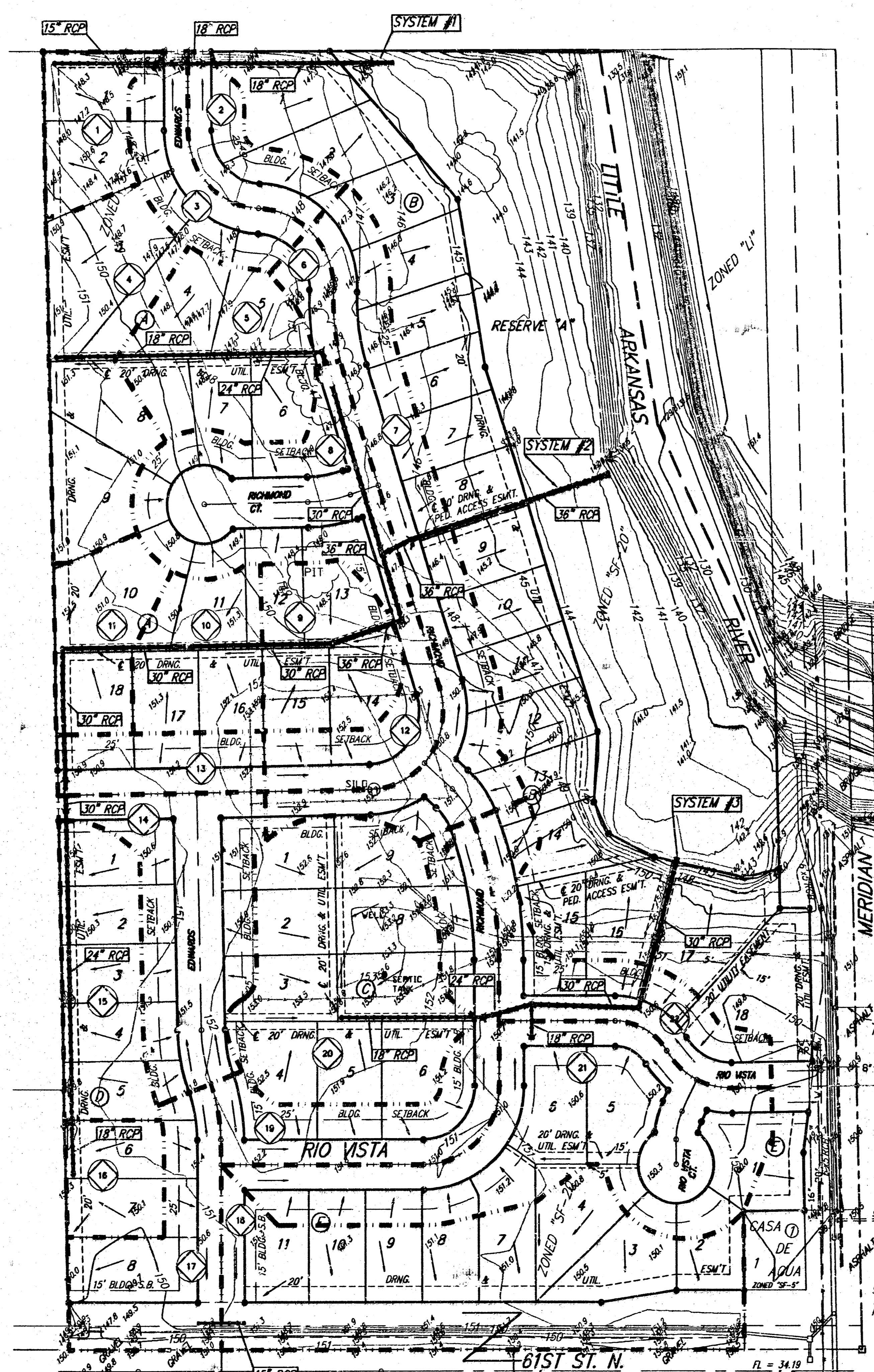
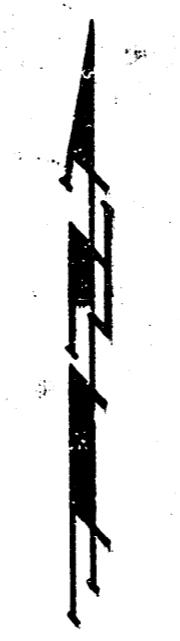
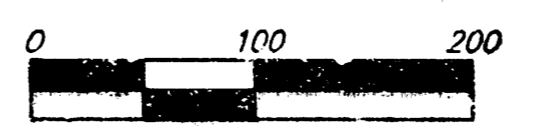


DRAINAGE PLAN RIO VISTA ESTATES 4TH WICHITA, SEDGWICK COUNTY, KANSAS





DATE OF PREPARATION: OCTOBER 26, 2002
DATE OF TOPOGRAPHY: OCTOBER 8, 2000
SURVEY PERFORMED BY WICHITA & ASSOCIATES
CONTOUR INTERVALS = 1 FOOT

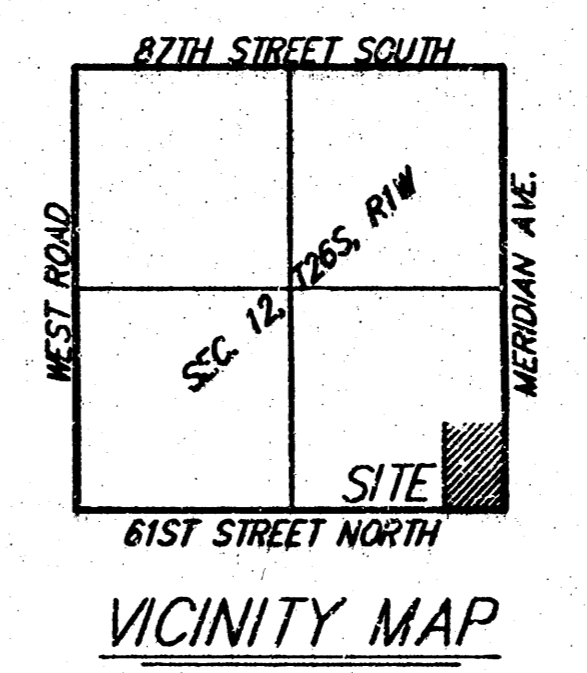
OWNER & SUBDIVIDER:
James Catron
6545 Bella Rd.
Wichita, Ks 67204
316-755-2413

| MINIMUM BUILDING PAD ELEVATIONS FOR LOWEST OPENING TO THE STRUCTURES | | | |
|--|-------|-----------|------------|
| LOT | BLOCK | ELEVATION | |
| | | M.S.L. | CITY DATUM |
| 1-18 | B | 1333.6 | 146.2 |

BENCHMARK:
R.R. SPIKE IN H.P. 150' E. & 30' S. OF THE S.W. COR., S.E. 1/4, SEC. 12-26-1W.
ELEV. = 1332.96 M.S.L.
ELEV. = 151.56 City Datum

"O" IN OPEN, TOP FLANGE OF FIRE HYDRANT AT THE S.W. CORNER OF 61ST. ST. N. & MERIDIAN AVE.
ELEV. = 1339.16 M.S.L.
ELEV. = 151.76 City Datum

| Basin ID | Area ACRES | Runoff Coefficients | | | Peak Flowrates | | |
|----------|------------|---------------------|------|------|----------------|-----|------|
| | | C2 | C5 | C100 | C2 | C5 | C100 |
| 1 | 0.5 | 0.44 | 0.46 | 0.81 | 0.8 | 1.0 | 2.2 |
| 2 | 0.5 | 0.44 | 0.46 | 0.81 | 0.8 | 1.0 | 2.2 |
| 3 | 0.8 | 0.44 | 0.46 | 0.81 | 1.0 | 1.3 | 2.7 |
| 4 | 1.2 | 0.44 | 0.46 | 0.81 | 2.2 | 2.7 | 5.8 |
| 5 | 1.1 | 0.44 | 0.46 | 0.81 | 1.9 | 2.3 | 5.0 |
| 6 | 0.2 | 0.44 | 0.46 | 0.81 | 0.3 | 0.4 | 0.9 |
| 7 | 1.8 | 0.44 | 0.46 | 0.81 | 3.0 | 3.8 | 8.1 |
| 8 | 1.4 | 0.44 | 0.46 | 0.81 | 2.4 | 2.9 | 6.3 |
| 9 | 0.8 | 0.44 | 0.46 | 0.81 | 1.2 | 1.7 | 3.6 |
| 10 | 0.7 | 0.44 | 0.46 | 0.81 | 1.2 | 1.5 | 3.1 |
| 11 | 0.6 | 0.44 | 0.46 | 0.81 | 1.0 | 1.3 | 2.7 |
| 12 | 0.5 | 0.44 | 0.46 | 0.81 | 0.8 | 1.0 | 2.2 |
| 13 | 0.5 | 0.44 | 0.46 | 0.81 | 0.8 | 1.0 | 2.2 |
| 14 | 1.4 | 0.44 | 0.46 | 0.81 | 2.4 | 2.9 | 6.3 |
| 15 | 0.9 | 0.44 | 0.46 | 0.81 | 1.5 | 1.9 | 4.0 |
| 16 | 0.4 | 0.44 | 0.46 | 0.81 | 0.7 | 0.8 | 1.8 |
| 17 | 1.1 | 0.44 | 0.46 | 0.81 | 1.7 | 2.1 | 4.5 |
| 18 | 2.8 | 0.44 | 0.46 | 0.81 | 4.7 | 5.9 | 12.8 |
| 19 | 1.2 | 0.44 | 0.46 | 0.81 | 2.0 | 2.5 | 5.4 |
| 20 | 2.1 | 0.44 | 0.46 | 0.81 | 3.5 | 4.4 | 9.4 |
| 21 | 2.3 | 0.44 | 0.46 | 0.81 | 3.9 | 4.8 | 10 |
| 22 | 0.9 | 0.44 | 0.46 | 0.81 | 1.5 | 1.9 | 4.0 |



RIO VISTA ESTATES
1 2ND ADDITION
ZONED "S"-5"
20' x 10' ROPE SWMS

THIS PROPERTY AFFECTED BY A LETTER OF MAP AMENDMENT (LOMA) THE PROPERTY HAS BEEN REMOVED FROM THE SPECIAL FLOOD HAZARD AREA (SFHA) EXCEPT THE AREA AS DESCRIBED IN A METES AND BOUNDS DESCRIPTION FILED WITH THE SEDGWICK COUNTY REGISTER OF DEEDS ON FILE 2039, PAGE 1026. THAT AREA DESCRIBED IS THE PORTION OF THE PROPERTY TO REMAIN IN THE SFHA, AND IS REPRESENTED ON THIS PLAT AS "RESERVE A". LOMA CASE# 01-07-115A, EFFECTIVE DATE MARCH 23, 2001. PANEL # 2003210 125A
BASE FLOOD ELEVATIONS (B.F.E.'S) =
VARY FROM 1331.1 TO 1332.6 NGVD
143.7 TO 145.2 CITY DATUM
03 DECEMBER 2002